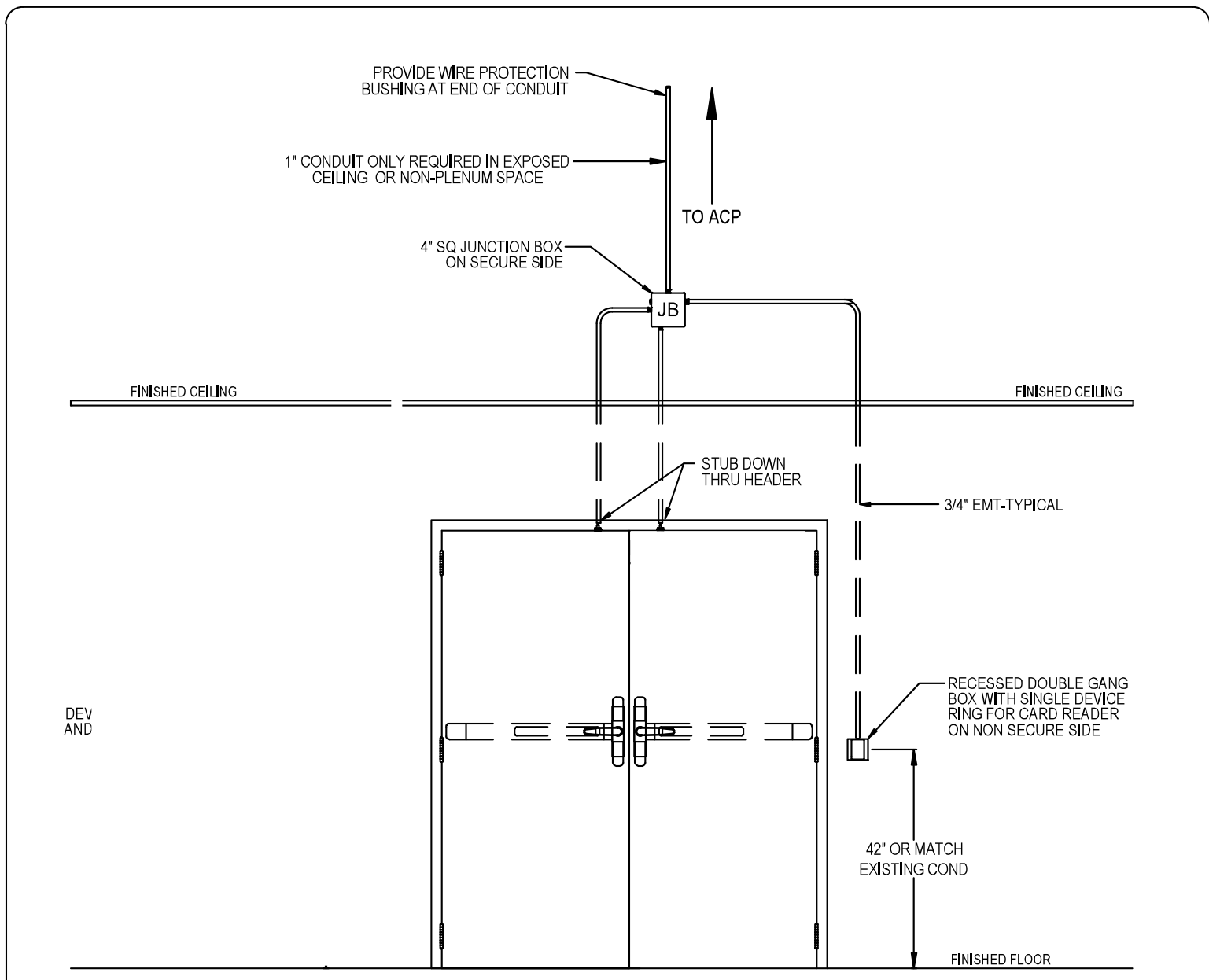


SOLUTIONS ENGINEERING TYPICAL

There for you.

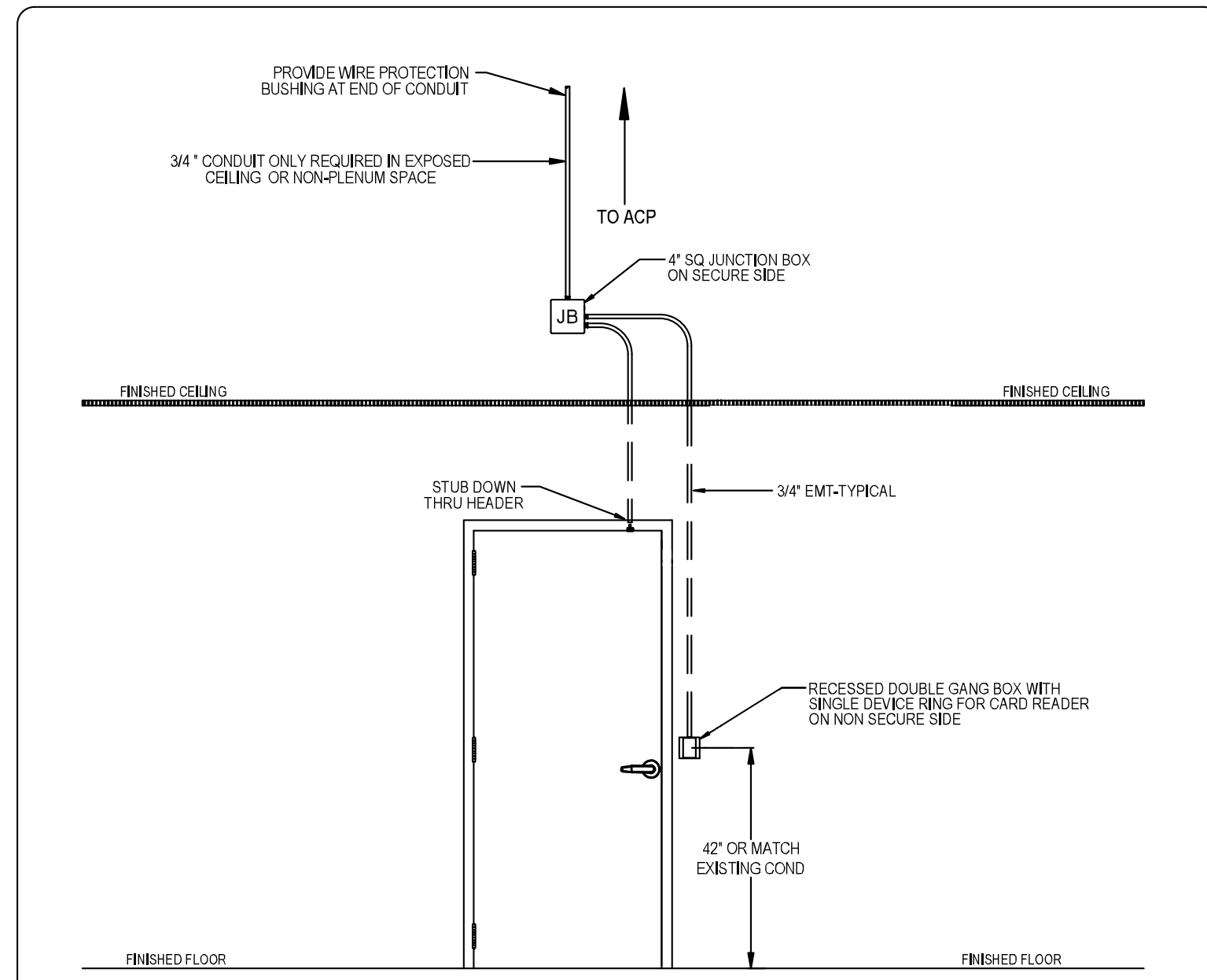


**DESCRIPTION:**  
 Double doors with read-in/read-out card readers and electric maglocks.  
 Door is shown from non-secure side.  
 Emergency pull station cuts power to maglocks for emergency egress, alarm will sound if activated.  
 Rough cabling, backboxes, conduit and stubs to accessible ceiling are by others unless otherwise noted.

Detail	DOUBLE DOOR WITH READ-IN/READ-OUT CARD READERS, ELECTRIC MAGLOCKS, EMERGENCY PULL STATION W/ SOUNDER UNSECURE SIDE OF DOOR	Scale
DC01		NTS
08/24/20		

SOLUTIONS ENGINEERING TYPICAL

There for you.

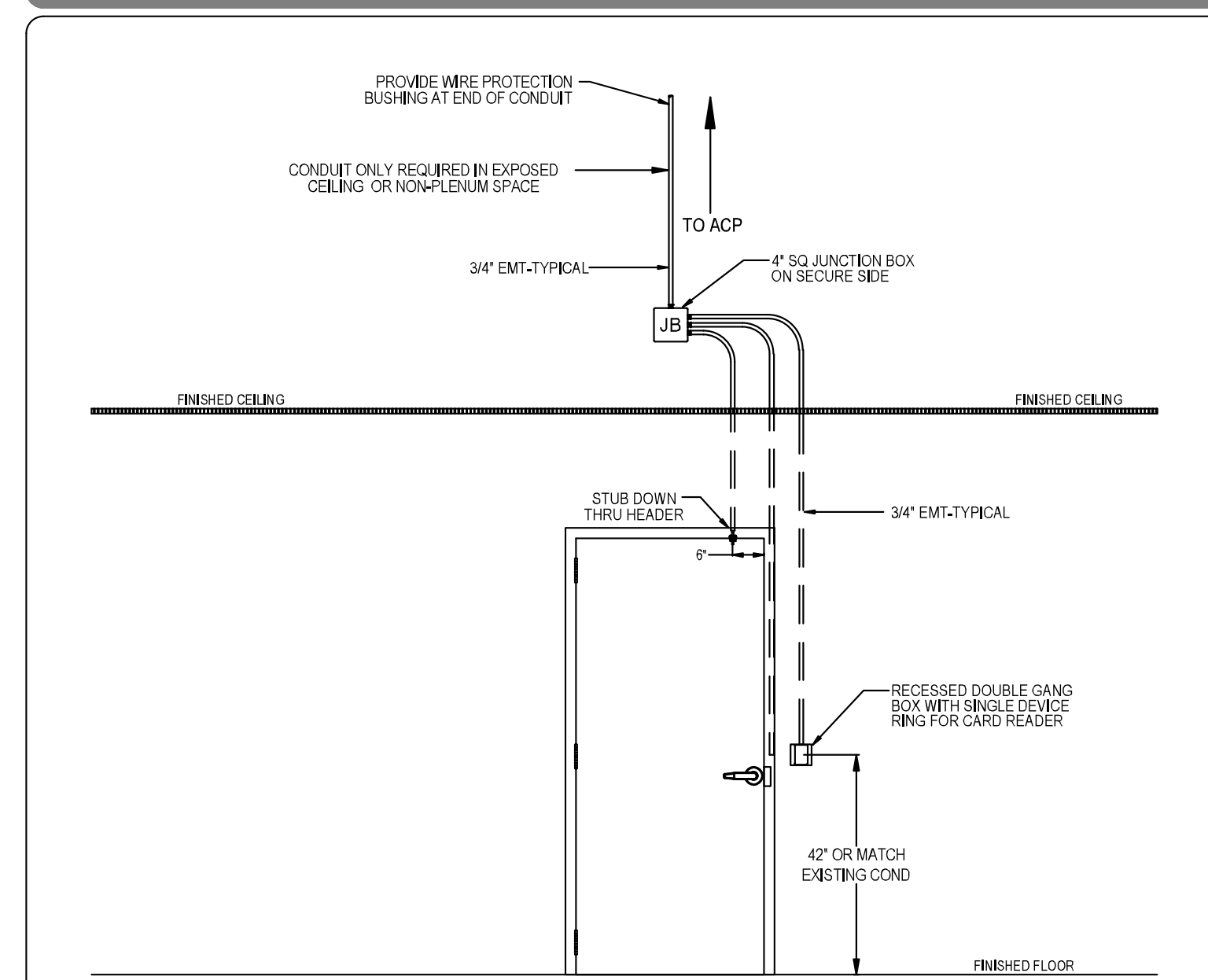


**DESCRIPTION:**  
 Single door with read-in/read-out card readers and electric maglock.  
 Door is shown from non-secure side.  
 Emergency pull station cuts power to maglock for emergency egress, alarm will sound if activated.  
 Rough cabling, backboxes, conduit and stubs to accessible ceiling are by others unless otherwise noted.

Detail	SINGLE DOOR WITH READ-IN/READ-OUT CARD READERS, ELECTRIC MAGLOCK, EMERGENCY PULL STATION W/ SOUNDER UNSECURE SIDE OF DOOR	Scale
DC02		NTS
08/24/20		

SOLUTIONS ENGINEERING TYPICAL

There for you.

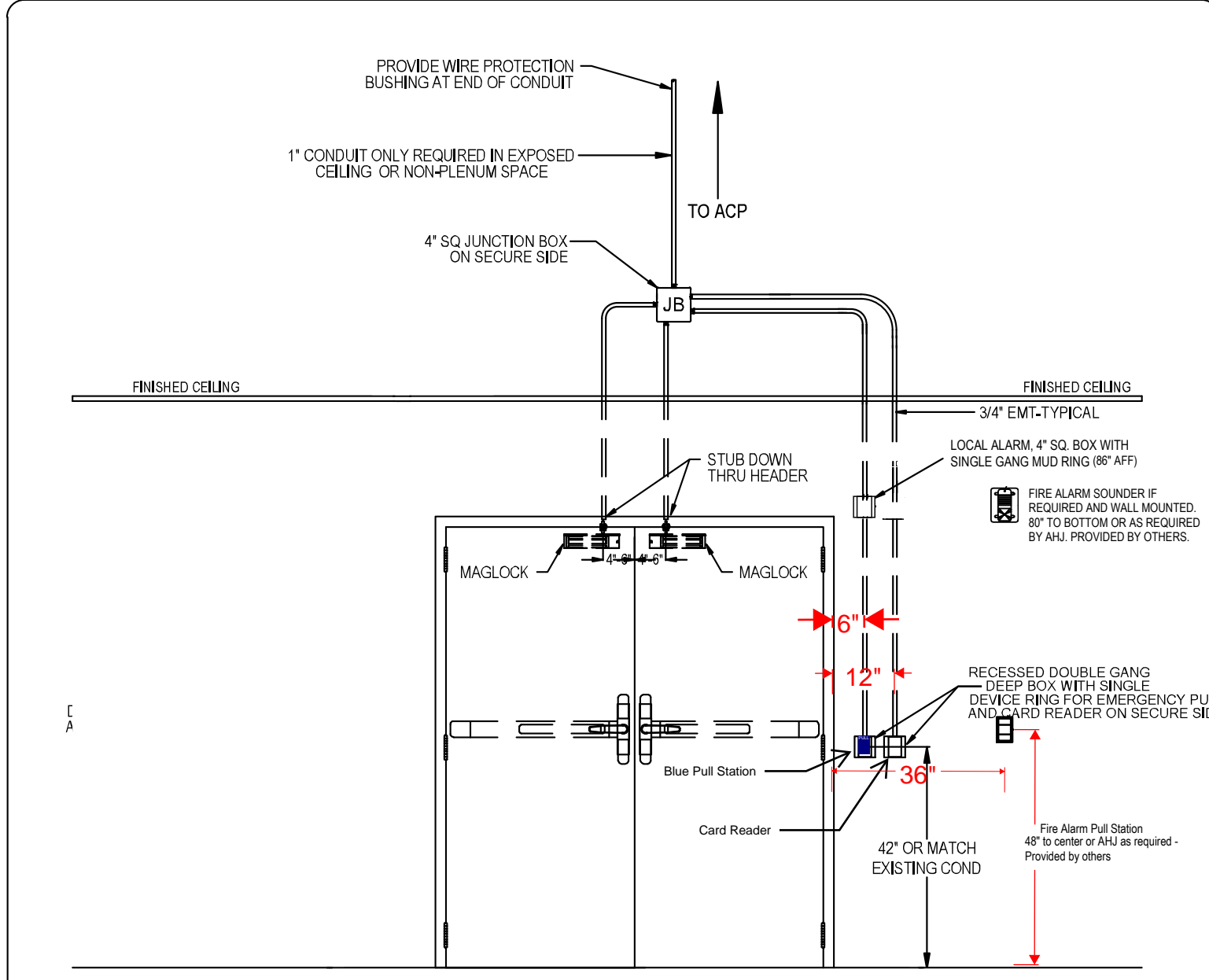


**DESCRIPTION:**  
 Single door with read-in card reader and electric strike.  
 Door is shown from non-secure side.  
 Lock power is fed through door frame to electric strike.  
 Rough cabling, backboxes, conduit and stubs to accessible ceiling are by others unless otherwise noted.

Detail	SINGLE DOOR WITH READ-IN CARD READER, ELECTRIC STRIKE	Scale
DC03		NTS
08/24/20		

SOLUTIONS ENGINEERING TYPICAL

There for you.

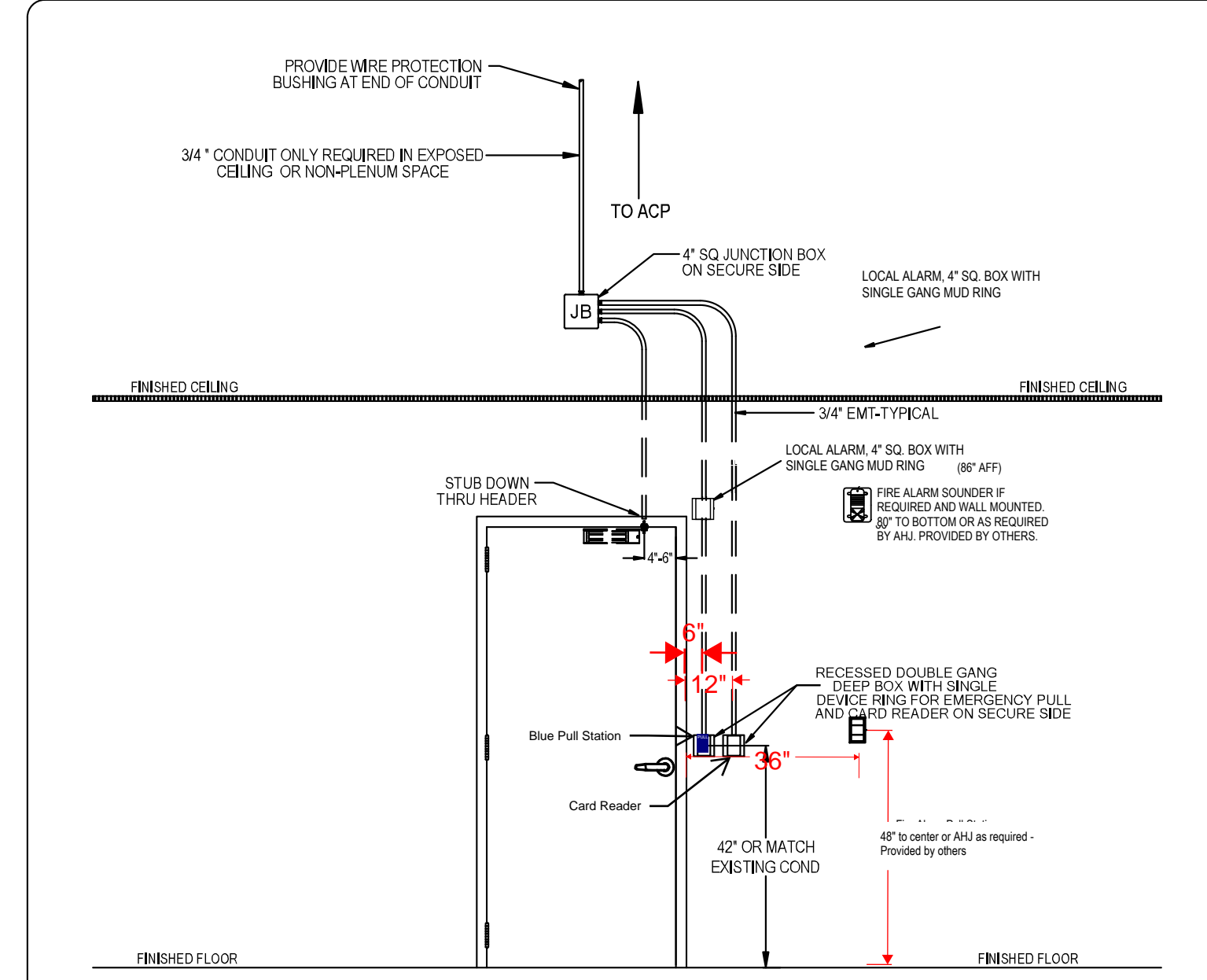


**DESCRIPTION:**  
 Double doors with read-in/read-out card readers and electric maglocks.  
 Door is shown from secure side.  
 Emergency pull station cuts power to maglocks for emergency egress, alarm will sound if activated.  
 Rough cabling, backboxes, conduit and stubs to accessible ceiling are by others unless otherwise noted.

Detail	DOUBLE DOOR WITH READ-IN/READ-OUT CARD READERS, ELECTRIC MAGLOCKS, EMERGENCY PULL STATION W/ SOUNDER SECURE SIDE OF DOOR	Scale
DC01		NTS
08/24/20		

SOLUTIONS ENGINEERING TYPICAL

There for you.

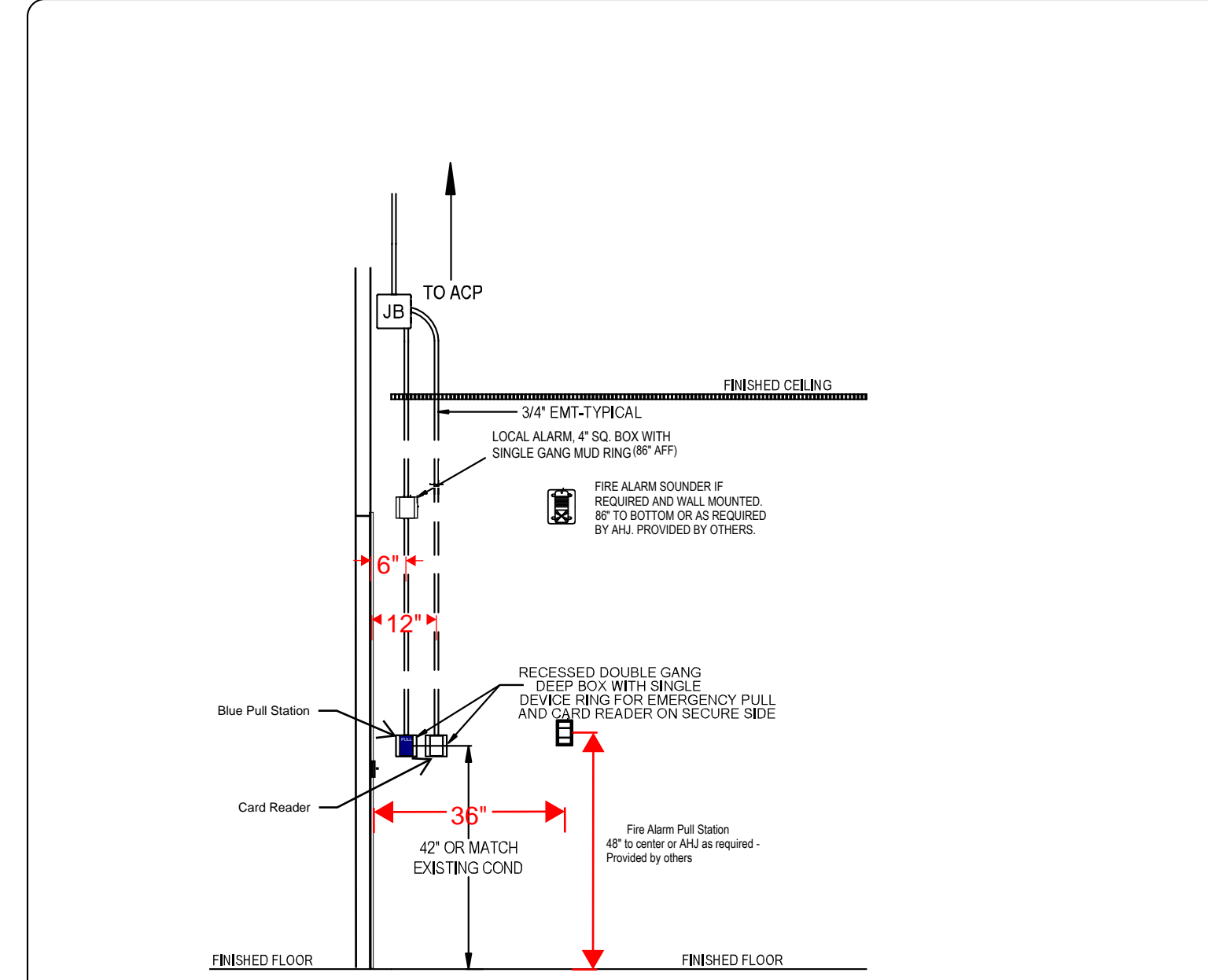


**DESCRIPTION:**  
 Single door with read-in/read-out card readers and electric maglock.  
 Door is shown from secure side.  
 Emergency pull station cuts power to maglock for emergency egress, alarm will sound if activated.  
 Rough cabling, backboxes, conduit and stubs to accessible ceiling are by others unless otherwise noted.

Detail	SINGLE DOOR WITH READ-IN/READ-OUT CARD READERS, ELECTRIC MAGLOCK, EMERGENCY PULL STATION W/ SOUNDER SECURE SIDE OF DOOR	Scale
DC02		NTS
08/24/20		

SOLUTIONS ENGINEERING TYPICAL

There for you.



**DESCRIPTION:**  
 Single or double doors with read-in/read-out and electric maglocks with adjacent walls where devices are mounted.  
 Door is shown from secure side.  
 Emergency pull station cuts power to maglock for emergency egress, alarm will sound if activated.  
 Rough cabling, backboxes, conduit and stubs to accessible ceiling are by others unless otherwise noted.

Detail	SINGLE DOOR WITH READ-IN/READ-OUT CARD READERS, ELECTRIC MAGLOCK, EMERGENCY PULL STATION W/ SOUNDER SECURE SIDE OF DOOR	Scale
DCSW		NTS
10/14/22		

**General Notes**  
 This document and all drawings, specifications, data, design concepts, workday processes, implementation strategies, configurations and other information contained herein are the property of Allied Universal Technology Services (AUTS). Submitted by AUTS does not convey any rights to the recipient, and all intellectual or other property rights are reserved. The recipient may not use, reproduce or disclose the document or its contents except as necessary for the specific purpose contracted with AUTS. The recipient may not use the document or its contents for manufacturing, profit or sale, or installation by contractors other than AUTS. Any unauthorized use or disclosure without the prior written permission of AUTS is strictly prohibited.

NO.	DATE	DESCRIPTION
REVISIONS		

There for you.

SE Region,  
Pensacola, FL Office

1502 N. 9th Ave,  
Pensacola, FL 32503  
Phone: 850.434.2050  
Fax: 850.469.9249

Client \_\_\_\_\_

Title \_\_\_\_\_

Date:	Drawn Scale:
Drawn By:	AUTS Sales Rep:
AUTS PM:	AUTS CPSO:
AUTS File Name:	
AUTS Quote & SO:	Sheet#