

<b>Floor Finish (F):</b>	
F-1	<b>QUARRY TILE</b> Vendor/Manufacturer: Trinity Tile / Metropolitan Ceramics Pattern/Color: QuarryBasics / 507 Puritan Gray Description: 6" x 6" unglazed quarry tile, smooth surface Grout: Mapei, color #35 Navajo Brown
F-2	<b>PORCELAIN TILE - CENTRAL BATH</b> Vendor/Manufacturer: Crossville Pattern/Color: Shades / Haze UPS 12x24
F-2.1	Pattern/Color: Shades / Haze Honed 6x24
F-2.2	Description: Alternating rows of 12x24 and 6x24 tile with 1/8"w joints at 1/3 intervals. Grout: Mapei Flex Color CQ, 09 Gray
F-3	<b>TUFTED LOOP MODULAR CARPET</b> Manufacturer: Interface
F-3.1	Open Circle Pattern: M0581 Style No.: 146000250H, Cartera Colores pattern library Color No.: 99 Sample No./Date: 256622-022, 11/14/12 Layout: Brick layout w/ background stripe perpendicular to length of corridor - see Finish Plan.
F-3.2	Solid Circle Pattern: M0579 Style No.: 146000250H, Cartera Colores pattern library Color No.: 99 Sample No./Date: 256622-021, 11/14/12 Layout: Quarter-lum layout unless otherwise noted - see Finish Plan.
F-3.3	Basketweave Pattern: M0506 Style No.: 146010250H, Santiago Colores pattern library Color No.: 99 Sample No./Date: 256622-016, 11/5/12 Layout: Brick layout unless otherwise noted - see Finish Plan.
F-3.4	Border Pattern: Style No.: 147150250 Farmland Loop Color No.: 99 Sample No.: 256622-033 Layout: Half-tile border unless otherwise noted; background stripe perpendicular to length of border; mitred corners - see Finish Plan. Description: Tufted textured loop 50cm x 50cm carpet tile; 18 oz. Universal type 6.6 nylon fiber, 100% solution dyed, GlasBac PVC backing, Intersept lifetime anti-microbial, Protekt soil/stain protection. Direct glue installation per manufacturer's recommendations.
F-4	<b>LUXURY VINYL PLANK FLOORING</b> Vendor/Manufacturer: Tarkett Pattern/Color: Woodland Path / 57605 Seasoned Cypress Description: 6"x 36"x 3mm thick luxury vinyl plank flooring; staggered layout - 33% offset typical with adjustment at diagonal orientation to avoid alignment of head seams.
F-5	<b>PORCELAIN TILE</b> Vendor/Manufacturer: Trinity Tile
F-5.1	Pattern/Color-field: Crowne / Walnut
F-5.2	Pattern/Color-border: Crowne / Natural Description: 6"x 36"x 10.5mm wood-look porcelain tile, unpolished & rectified; staggered layout typical with adjustment at diagonal orientation to avoid alignment of head seams; 1/8" grout joints. Grout: Mapei Flex Color CQ / 10 Black
F-6	<b>PUTTING GREEN SURFACE - FITNESS</b> Vendor: Synthetic Turf International of Atlanta Pattern/Color: STI Pro Putt 3/8" at putting surface
F-6.1	Description: Nylon with foam backing
F-6.2	Pattern: SoftLawn Perennial Rye 1-1/4" at fringe Description: Polypropylene
F-7	<b>PEBBLE MOSAIC TILE - FITNESS</b> Manufacturer: Maniscalco Stone Pattern/Color: Sliced Botany Bay Pebbles / Q203 Sliced Olive Description: Mesh-mounted flat sliced pebbles at walking track Grout: Mapei Flex Color CQ, color #35 Navajo Brown
F-8	<b>PORCELAIN BRICK TILE - FITNESS</b> Vendor: Trinity Tile Pattern/Color: Plaza Brick / Broadway Description: 4x8 paver in brick pattern at walking track Grout: Mapei Flex Color CQ, color #35 Navajo Brown
F-9	<b>VINYL COMPOSITION TILE</b> Manufacturer: Armstrong Pattern: Standard Excelon Color: 51861 Soft Warm Gray
F-9.1	Color: 51802 Silver Green
F-9.2	Color: 59234 Silk
F-10	<b>NOT USED</b>
F-11	<b>LUXURY VINYL TILE - TWO COLOR PATTERN</b> Manufacturer: Tarkett Pattern/Color: EQZ 7230 QU Swiss Quartzite 18"x 18"
F-11.1	Manufacturer: Tarkett
F-11.2	Pattern/Color: Victory Coral Reef / CR0053 Sandcastle 9"x 9" Description: 2-piece pattern including 18"x 18"x 1/8" thick luxury vinyl embossed tile and 9"x 9"x 1/8" luxury vinyl slate surface tile.
F-12	<b>PORCELAIN FLOOR TILE</b> Vendor: Interceramic Pattern/Color: Montreaux / Gris 13x13 Description: 13x13 tile in brick layout Grout: Mapei Flex Color CQ, 11 Sahara Beige
F-13	<b>SEALED CONCRETE</b>
F-13.1	Finish: Smooth
F-13.2	Finish: Broom Finish
F-14	<b>PORCELAIN FLOOR TILE - UNITS</b> Vendor: Trinity Tile Pattern/Color: 3x12 Bullnose Novara / Beige Grout: Mapei Flex Color CQ, 11 Sahara Beige
F-14.1	Field Tile Pattern/Color: 12x24 Novara / Beige
F-14.2	Pattern/Color: 2x2 Mosaic Novara / Beige Description: 12x24 tile in brick layout with 30% offset; 2x2 mosaic tile at shower floor only. Grout: Mapei Flex Color CQ, 11 Sahara Beige

<b>Base Finish (B):</b>	
B-1	<b>RUBBER COVE BASE</b> Manufacturer: Johnsonite Color: 86 Hunter Green
B-1.1	Color: 32 Pebble
B-1.2	
B-2	<b>PORCELAIN TILE BASE - UNITS</b> Vendor: Trinity Tile Pattern/Color: 3x12 Bullnose Novara / Beige Grout: Mapei Flex Color CQ, 11 Sahara Beige
B-3	<b>PAINTED WOOD BASE</b> Paint Manufacturer: Sherwin Williams Color: SW7551 Greek Villa Description: Semi-gloss enamel paint; low VOC
B-4	<b>QUARRY TILE BASE</b> Vendor/Manufacturer: Trinity Tile / Metropolitan Ceramics Pattern/Color: QuarryBasics / 507 Puritan Gray Description: 6" x 6" unglazed quarry tile coverbullnose base Grout: Mapei Flex Color CQ, 35 Navajo Brown
B-5	<b>PORCELAIN TILE BASE</b> Vendor: Interceramic Pattern/Color: Montreaux / Gris 3x13 bullnose Grout: Mapei Flex Color CQ, 09 Gray

<b>Wall Finish (W):</b>	
W-1	<b>VINYL WALL COVERING w/ MICRO-VENTING</b> Pattern: MDC 2858KP/4149 Kampala Linen
W-1.1	Pattern: MDC MDD3328/4149 Plaid Hatter White Queen
W-1.2	Pattern: Eykon Lanark Wired L2-WI-03 Silicon
W-1.3	Pattern: Eykon Lanark Garden Party L2-GY-09 Agave
W-1.4	
W-2	<b>CULTURED STACKED STONE</b> Manufacturer: Boral Pattern/Color: Country LedgeStone / Ashfall
W-3	<b>NOT USED</b>
W-4	<b>GLASS TILE - COFFEE BAR BACKSPLASH</b> Vendor/Manufacturer: Bedrosians Tile & Stone Pattern/Color - field tile: Cloe 2.5 x 8 / Green DECCLCLOGRN28G Vendor: Dal-Tile Description: ceramic tile - with Rondec Schuller Cap Grout Color: Mapei Flex Color CQ, 02 Pewter
W-5	<b>WALL PAINT</b> Manufacturer: Sherwin Williams Color: SW7029 Agreeable Gray - SuperPaint Interior Acrylic Latex, Flat
W-6	<b>WALL PAINT</b> Manufacturer: Sherwin Williams Color: SW7551 Greek Villa - SuperPaint Interior Acrylic Latex, Flat
W-6.1	Color: SW7551 Greek Villa - Duration Home Interior Acrylic Latex, Flat
W-6.2	Color: SW7551 Greek Villa - Pro Industrial High Performance Epoxy, Gloss
W-6.3	
W-7	<b>WALL MIRROR</b> Description: 1/4" tempered glass mirror with polished edges; extends from top of base to 6'-8" a.f.f.
W-8	<b>FRP PANELS</b> Manufacturer: Marlite Pattern/Color: Standard FRP, Class 1/A Fire-rating / P145 Silver, Pebbled Surface
W-9	<b>PORCELAIN WALL TILE - UNITS</b> Vendor: Trinity Tile Pattern/Color: Artistica / Arctic Matte Description: 4x16 glazed ceramic tile in brick layout with 30% offset, bullnose at exposed edges. Grout: Mapei Flex Color CQ, 11 Sahara Beige
W-10	<b>THEMED DINING BACKSPLASH TILE</b>
W-10.1	<b>Palm Court Theme</b> Manufacturer: Daltile Pattern/Color: Ayers Rock 13x13 / AY04 Majestic Mound Pattern/Color: Limestone Pencil Trim 3/4" x 12" / M PR HON L343 Corton Sable Std Description: Layout includes 13x13 filed tile on diagonal with pencil trim border at edge of wall, top of splash, and bottom of open cabinet with mitred corners. Grout: Mapei Flex Color CQ, 11 Sahara Beige
W-10.2	<b>Captain's Club Theme</b> Vendor: Questech Pattern/Color - field tile: Dorset Soho Field 4x4 / MD403024 Brushed Nickel Pattern/Color - accent tile: Dorset Clover Deco 4x4 / M1D213088 Wrought Iron Pattern/Color - border: Dorset Classic Ogee 2x12 / M1L04068 Wrought Iron Description: 4x4 field tiles with 4x4 accent tiles in checkerboard layout surrounded by 2x12 ogee border at edge of wall, top of splash, and under open cabinet with mitred corners. Grout: Mapei Flex Color CQ, 09 Gray Grout: Mapei Flex Color CQ, 09 Gray
W-10.3	<b>Retro Café Theme</b> Vendor: Daltile Pattern/Color-field tile: Natural Hues 4x8 / QH83 Lace Pattern/Color-accent tiles: Natural Hues 4x4 / 1-QH80 Fern, 2-QH55 Jade, 3-QH52 Everglade, Grout: Mapei Flex Color CQ, 09 Gray Description: Field of 4x8 tiles with random mix of 4x4 tiles - 70% field color with 10% each accent color. See interior elevations for more information.
W-11	<b>PORCELAIN TILE - CENTRAL BATH</b> Vendor/Manufacturer: Dal-Tile
W-11.1	Pattern/Color: Fabrique / Gris Linen Unpolished 12x24
W-11.2	Pattern/Color: Fabrique / Creme Linen Unpolished 12x24
W-11.3	Pattern/Color: Render Metals Pleated 3x18 / RE96 Pewter Description: Full-height color blocks of 12x24 tiles in stacked bond layout separated by vertical bands of 3x18 metallic look tiles. Grout: Mapei Flex Color CQ, 09 Gray
W-12	<b>RIGID VINYL SHEET</b> Manufacturer: InPro Corporation Pattern/Color-corridors: #305 / 0124 Hunter Green
W-12.1	Pattern/Color-dining room: #305 / 0119 Pepperdust
W-12.2	Description: 100' roll x 36"w x .040" thick rigid vinyl sheet and accessories required for complete installation including 407 top cap and 409 inside corner.
W-13	<b>MOSAIC TILE - RECEPTION</b> Manufacturer: MIR Mosaic Pattern/Color: Solid Colors 06" Collection / N077 Green NB-GN439 Description: Mesh-mounted glass tile Grout: Mapei Flex Color CQ, 02 Pewter
W-14	<b>NOT USED</b>
W-15	<b>CERAMIC TILE - SPORTS BAR BACKSPLASH</b> Manufacturer: Bedrosians Tile & Stone Pattern/Color: Cloe / Green DECCLCLOGRN28G Description: 2.5" x 8" wall tile; subway layout Grout Color: Mapei Flex Color CQ, 02 Pewter

<b>Ceiling Finish (C):</b>	
C-1	<b>PAINTED DRYWALL</b> Manufacturer: Sherwin Williams Color: SW7551 Greek Villa - SuperPaint Interior Acrylic Latex, Flat
C-1.1	Color: SW7551 Greek Villa - Duration Home Interior Acrylic Latex, Flat
C-1.2	Color: SW7551 Greek Villa - Pro Industrial High Performance Epoxy, Gloss
C-1.3	

<b>Trim Finish (T):</b>	
T-1	<b>PAINTED TRIM</b> Manufacturer: Sherwin Williams Color: SW7551 Greek Villa - Enamel, Semi-gloss

<b>Millwork (M):</b>	
M-1	<b>MILLWORK GROUP 1</b> Description: Finger-joint white pine or equal; semi-gloss enamel; S4S profiles to have eased edges. 1-piece base (shoe mould at hardwood and luxury vinyl flooring only) - 3/4"x 5-1/2" S4S 2-piece crown - 3/4"x 5-1/2" S4S apron; 2"x 2" cove 1-piece casing - 3/4"x 3-1/2" S4S

<b>Countertop (CR):</b>	
CR-1	<b>GRANITE COUNTERTOP</b> Color: Verde Butterfly Description: 3cm granite countertop & splash; polished finish, eased edges. Grommets as required.
CR-2	<b>PLASTIC LAMINATE COUNTERTOP</b> Manufacturer: Nevamar Pattern/Color: Green Matrix / MR5007T Description: 1-1/2" laminate countertop and splash; self edge. Grommets as required.

CR-3	<b>GRANITE VANITY TOP</b> Color: Costa Esmeralda Description: 3cm vanity top & splash; polished finish, eased edges. Grommets as required.
CR-4	<b>GRANITE COUNTERTOP</b> Color: To be selected from Group 1 (similar to White Tiger) Description: 3cm granite countertop & splash; polished finish, eased edges. Grommets as required.
CR-5	<b>CULTURED STONE VANITY TOP</b> Color: Polar White Description: 5/8" Venetian Marble
CR-6	<b>QUARTZ COUNTERTOP</b> Manufacturer: Vicostone Color: BQ850 Alpine Description: 3cm quartz with eased edge, polished finish, back and side splash.

<b>Casework (CS):</b>	
CS-1	<b>STAINED WOOD CASEWORK - RECEPTION</b> Description: Kneewall below pass-thru counters at both Lobby and Coffee Bar to have painted panels - see 1/D3.0 for more information. Work area behind Lobby pass-thru to have stained wood cabinetry with a B/B/F pedestal on each side of kneespace and accessible wiring access panels in back of knee space. Adjacent base cabinets to have adjustable shelves. Wall cabinets above reception work area counter located directly opposite Coffee Bar pass-thru to have glass doors and fixed sloped shelves with plexi-glass fronts for snack display. Wall cabinets over sink/coffee machine counter to have adjustable shelves. Tall cabinets beside Coffee Bar pass-thru to be 12"d pantry cabinets with adj shelves. Wall cabinet and pantry cabinets to have crown moulding. All cabinet doors and drawers to be lockable. Knee Wall Paint Color: Sherwin Williams SW7551 Greek Villa Cabinet Stain Color: Match Wilsonart 7943K-07 Colombian Walnut Cabinet Hardware: Atlas Homewares Bronte 352-BRN 5-1/16" c-c pull Brushed Nickel finish
CS-2	<b>PLASTIC LAMINATE BATHROOM VANITY</b> Description: Plastic laminate sloped vanity skirt Laminate manufacturer: Wilsonart Pattern/Color: 7943K-07 Colombian Walnut
CS-3	<b>STAINED WOOD BOOKCASES - LIVING ROOM</b> Description: Stained hardwood base cabinets with open shelf hutch; stile&rail/flat panel cabinet doors & adj shelves; adjustable wood shelves at hutch; crown moulding; all cabinets lockable. Stain Color: Match Wilsonart 7943K-07 Colombian Walnut Cabinet Hardware: Atlas Homewares Bronte 352-BRN 5-1/16" c-c pull Satin Stainless finish

CS-4	<b>STAINED WOOD KITCHEN CABINETS - OT KITCHEN</b> Description: Base and wall cabinets to be stained hardwood stile and rail w/ flat panel; adjustable shelves at wall cabinets; roll-out shelves at base cabinets; crown moulding; under-cabinet lighting. Stain Color: Match Wilsonart 7943K-07 Colombian Walnut Cabinet Hardware: Atlas Homewares Bronte 352-BRN 5-1/16" c-c pull Brushed Nickel finish
CS-5	<b>STAINED WOOD BOOKCASES - LIBRARY</b> Description: Stained hardwood bookcases w/ two bottom drawers for paperback books, fixed periodical shelf above drawers and adjustable shelves above, crown moulding. Stain Color: Match Wilsonart 7943K-07 Colombian Walnut Cabinet Hardware: Atlas Homewares Bronte 352-BRN 5-1/16" c-c pull Satin Stainless finish

CS-6	<b>STAINED WOOD COMPUTER WORK STATIONS - LIBRARY/COFFEE BAR</b> Description: Stained hardwood vertical supports to create individual work stations with vertical curved top dividers above counter; grommets at each work station as required. Accessible hinged 3/4 length panels below counter to hide wiring installed 6" from back of casework with tough-latch hardware. Stain Color: Match Wilsonart 7943K-07 Colombian Walnut
CS-7	<b>PLASTIC LAMINATE STORAGE/GARAGE CABINETS - THERAPY</b> Description: Plastic laminate equipment garage and storage cabinets; garage cabinets to have two sections - lower section to have double doors with kickbase attached to doors and no cabinet base so that therapy equipment can be rolled into cabinet, upper section to have adjustable shelf, both sections lockable; storage cabinets to have double doors and adjustable shelves, lockable. Laminate manufacturer: Wilsonart Pattern/Color: 7943K-07 Colombian Walnut Cabinet Hardware: Brushed Stainless 4" ADA compliant "C" pulls Approx. Dim.: 78"h x 36"w x 24"d

CS-8	<b>PLASTIC LAMINATE CABINETS</b> Description: Plastic laminate base and wall cabinets; adjustable shelves; lockable. Laminate manufacturer: Wilsonart Pattern/Color: 7943K-07 Colombian Walnut Cabinet Hardware: Brushed Stainless 4" ADA compliant "C" pulls
CS-9	<b>STAINED WOOD/LAMINATE CASEWORK - SALON</b> Description: Stained hardwood base and wall cabinets with stile&rail/flat panel doors; adjustable shelves and slab drawer fronts; bulkheads behind shampoo sinks to be plastic laminate as well as side panels of adjacent base cabinets facing sinks; all cabinets and drawers to be lockable. Laminate manufacturer: Wilsonart Pattern/Color: 79743K-07 Colombian Walnut Stain Color: Match Wilsonart 7943K-07 Colombian Walnut Cabinet Hardware: Atlas Homewares Bronte 352-BRN 5-1/16" c-c pull Satin Stainless finish

CS-10	<b>NOT USED</b>
CS-11	<b>PLASTIC LAMINATE CASEWORK - EXAM</b> Description: Plastic laminate work station with storage pedestal and kneespace work area; laminate wall cabinets with adjustable shelves. All base and wall cabinets to be lockable. Grommets as required. Laminate manufacturer: Wilsonart Pattern/Color: 7943K-07 Colombian Walnut Cabinet Hardware: Brushed Stainless 4" ADA compliant "C" pulls
CS-12	<b>STAINED WOOD CASEWORK - NURSE STATION</b> Description: Work area to have stained wood B/B/F stoarge pedestals, apron with pencil drawer, and accessible hinged 3/4 length panels below counter to hide wiring installed 6" from back of casework with tough-latch hardware. Tall storage cabinet to have shaker style doors. All cabinet doors and drawers to be lockable. Grommets as required. Paint Color: Sherwin Williams SW7551 Greek Villa Stain Color: Match Wilsonart 7943K-07 Colombian Walnut Cabinet Hardware: Atlas Homewares Bronte 352-BRN 5-1/16" c-c pull Brushed Nickel finish

CS-13	<b>STAINED WOOD SERVING CASEWORK - DINING ROOM</b> Description: Stained hardwood base cabinets and full height pantry cabinet w/ adjustable shelves, open wall cabinets, crown moulding & undercabinet lighting; all cabinet doors and drawers lockable.
CS-13.1	<b>Palm Court Theme</b> Description: Cabinet doors to have painted & glazed beadboard panel, slab drawer fronts to have moulded edges. Stain Color: Match Wilsonart 7943K-07 Colombian Walnut Paint/Glaze Color: Sherwin Williams SW7030 Anew Gray with dark gray antique glaze Cabinet Hardware: Atlas Homewares Bronte 352-BRN 5-1/16" c-c pull Brushed Nickel finish
CS-13.2	<b>Captain's Club Theme</b> Description-perimeter cabinets: Stained hardwood base cabinets with top drawers and adj. shelves wall cabinets to have adj. shelves, crown moulding and undercabinet lighting; all doors and drawers lockable. Typical cabinet doors to have flat panel with slab drawer fronts. Cabinets below hot/cold plate equipment to have taller aprons, and louvered doors and thru-wall vents in back of cabinets for compressor ventilation. Description-island: Knee wall with stained hardwood paneling; stained hardwood base cabinets with flat panel doors and slab drawer fronts; duplex outlets located inside base cabinets as shown on interior elevations; grommets in countertop as required for access to power. Stain Color: Match Wilsonart 7943K-07 Colombian Walnut Cabinet Hardware: Atlas Homewares Bronte 352-BRN 5-1/16" c-c pull Brushed Nickel finish
CS-13.3	<b>Retro Café Theme</b> Description: Cabinet doors to have louvered panel, slab drawer fronts to have moulded edges. Back panel of cabinet with condensing unit to have cut out for venting. Stain Color: Match Wilsonart 7943K-07 Colombian Walnut Cabinet Hardware: Atlas Homewares Bronte Collection 352-BRN 5-1/16" c-c pull Brushed Nickel finish
CS-14	<b>STAINED WOOD/LAMINATE CASEWORK - THERAPY/SALON RECEPTION</b> Description: Knee wall to have stained hardwood veneer plywood continuous horizontal panels; accent band below transaction top to be 1/2" thick resin panel; work area behind kneewall to have open kneespace with storage pedestals at each end and pencil drawer. Stain Color: Match Wilsonart 7943K-07 Colombian Walnut Resin panel: 3Form, Varia Ecoresin hint meadow + clear emboss front & supermatte back Cabinet Hardware: Atlas Homewares Bronte 352-BRN 5-1/16" c-c pull Satin Stainless finish
CS-15	<b>LAMINATE VANITY SKIRT</b> Description: Plastic laminate apron and end panels as required at exposed ends; laminate sloped panel. Laminate Color: Wilsonart 7943K-07 Colombian Walnut
CS-16	<b>STAINED WOOD CASEWORK &amp; VANITY - WAITING</b> Description: Kneewall to have stained wood paneling on front and side. Work area to have pencil drawers and drawer pedestals - lockable. Transaction height counter on front side to include stone and glass surfaces. Accessible height counter on side to include stone surface. Stained hardwood vanity with apron and sloped ADA panel. Stain Color: Match Wilsonart 7943K-07 Colombian Walnut Cabinet Hardware: Atlas Homewares Bronte Collection 352-BRN 5-1/16" c-c pull Brushed Nickel finish
CS-17	<b>STAINED WOOD CASEWORK - COFFEE BAR</b> Description: Stained hardwood base cabinet with roll-out trash receptacle in one compartment and adjustable shelves in other compartments; all cabinet doors lockable. Stain Color: Match Wilsonart 7943K-07 Colombian Walnut Cabinet Hardware: Atlas Homewares Bronte Collection 352-BRN 5-1/16" c-c pull Brushed Nickel finish
CS-18	<b>STAINED WOOD CASEWORK - SPORTS BAR</b> Description: Knee wall to have stained hardwood stile & rail paneling; open shelving with vertical supports at work side of knee wall; stone countertop to have 1/2" clear glass transaction top with polished edges and stainless steel stand-off supports; backbar base cabinets to have stained hardwood flat panel doors and slab drawer fronts; two glass door hutch sections at back bar with open section between; hutch cabinets to have adj. glass shelves, crown moulding and cabinet lighting; canopy above open area to have arched bottom rail and paneled front; all cabinet doors and drawers lockable. Stain Color: Match Wilsonart 7943K-07 Colombian Walnut Cabinet Hardware: Atlas Homewares Bronte Collection 352-BRN 5-1/16" c-c pull Brushed Nickel finish
CS-19	<b>PLASTIC LAMINATE CASEWORK - TYPICAL UNIT</b> Description: Plastic laminate drawer cabinet and wardrobe cabinet; flush doors and drawer fronts; melamine interiors. Wardrobe cabinet to have clothes rod and rob hook on back of door. Laminate Manufacturer: Wilsonart Pattern/Color: 7943K-07 Colombian Walnut Cabinet Hardware: Brushed stainless 4" ADA compliant "C" pulls
CS-20	<b>PLASTIC LAMINATE CASEWORK &amp; BOOKCASE - CONCIERGE UNIT</b> Description-casework: Plastic laminate sink base, drawer cabinet and wardrobe cabinet; flush door and drawer fronts; melamine interiors. Wardrobe cabinet to have clothes rod and rob hook on back of door. Description-bookcase: Plastic laminate open bookcase room divider with paneling to floor and plinth base on one side and fixed shelves. Laminate Manufacturer: Wilsonart Pattern/Color: 7943K-07 Colombian Walnut Cabinet Hardware: Brushed stainless 4" ADA compliant "C" pulls

<b>SOURCE LIST</b> Trinity Tile Brittany Belote <a href="mailto:bbelote@trinitysurfaces.com">bbelote@trinitysurfaces.com</a>	<b>Interface</b> Alison Millsaps-Morris <a href="mailto:Alison.Millsaps-Morris@interface.com">Alison.Millsaps-Morris@interface.com</a>	<b>Maniscalco Stone</b> <a href="http://www.maniscalcostone.com">www.maniscalcostone.com</a>
<b>Daltile</b> Andrea Zaharion <a href="mailto:andrea.zaharion@daltile.com">andrea.zaharion@daltile.com</a>	<b>Teknolor</b> Collin Keating <a href="mailto:ckeating@3spartansurfaces.com">ckeating@3spartansurfaces.com</a>	<b>Tarkett</b> Lennie Rowan <a href="mailto:lennie.rowan@tarkett.com">lennie.rowan@tarkett.com</a>
<b>Interceramic</b> Kevin Musser <a href="mailto:kmusser@interceramic.com">kmusser@interceramic.com</a>	<b>Momentum Textiles (Eykon)</b> Jean Hall <a href="mailto:jhall@momtex.com">jhall@momtex.com</a>	<b>MDC Wall Covering</b> BJ Blanchard <a href="mailto:rblanchard@mdcwall.com">rblanchard@mdcwall.com</a>
<b>Bedrosians Tile &amp; Stone</b> Meredith Courts <a href="mailto:mcourts@cas-corps.com">mcourts@cas-corps.com</a>	<b>MIR Mosaic</b> (408) 432-1000 <a href="mailto:info@mir-mosaic.com">info@mir-mosaic.com</a>	
<b>END OF COLOR SCHEDULE</b>		

CONSULTANT

SEAL

ARCHITECT

ADDRESS

PRUITTHEALTH  
CRYSTAL COAST

NO.	DATE	DESCRIPTION
1	--/--	-
2	--/--	-
3	--/--	-
4	--/--	-
5	--/--	-
6	--/--	-

Sheet Title:

COLOR SCHEDULE

Date: 09/29/2021  
Project No.: 202115

ID1.0

ISSUED FOR CONSTRUCTION



ROOM FINISH SCHEDULE

Rm #	Room Name	Floor	Base	Wall	Ceiling	Trim	Millwork	Countertop	Casework	Notes
001	Lobby	F-3.3, F-5.1, F-5.2	B-3	W-1.1, W-2	C-1.1	T-1	M-1	CR-1	CS-3	N-1, N-2, N-30, N-32
002	Reception	F-5.1	B-3	W-1.1, W-13	C-1.1	T-1	M-1	CR-1	CS-1	N-25
003	Coffee Bar	F-5.1	B-3	W-1.1, W-4	C-1.1	T-1	M-1	CR-1	CS-1, CS-6, CS-17	
004	Library	F-3.3	B-3	W-1.1	C-1.1	T-1	M-1	CR-1	CS-5	
005	Sports Bar	F-5.1	B-3	W-1.1, W-15	C-1.1	T-1	M-1	CR-1	CS-18	N-34
006	Admissions Office	F-3.3	B-3	W-5	C-1.1	T-1				
007	Family Room	F-3.3	B-3	W-5	C-1.1	T-1	M-1			
008	Toilet	F-12	B-5	W-1.3	C-1.1	T-1		CR-1	CS-2	N-4, N-18
009	Therapy Reception	F-3.1	B-3	W-1.1	C-1.1	T-1	M-1	CR-1	CS-14	
010	Hall	F-3.1	B-3	W-1.1	C-1.1	T-1	M-1			N-6, N-8, N-11
011	Speech Therapy	F-3.3	B-1.1	W-5	C-1.1	T-1				
012	Exam Rm. 1	F-4	B-1.2	W-5	C-1.1	T-1		CR-1	CS-11	
013	Exam Rm. 2	F-4	B-1.2	W-5	C-1.1	T-1		CR-1	CS-11	
014	Waiting	F-5.1	B-3	W-1.1	C-1.1	T-1	M-1	CR-1	CS-16	
015	Physical Therapy	F-3.2, F-6.1, F-6.2, F-7, F-8	B-1.1	W-5	C-1.1	T-1		CR-1	CS-4, CS-7	N-13
016	Closet	F-3.2	B-1.1	W-5	C-1.1	T-1				
017	Closet	F-3.2	B-1.1	W-5	C-1.1	T-1				
018	Cntrl Pnt.	F-3.1	B-1.1	W-1.2	C-1.1	T-1		CR-2	CS-8	N-8
019	Clean Linen	F-9.1	B-1.2	W-6.1	C-1.1	T-1		CR-2	CS-8	N-17
020	Soiled Linen	F-9.1	B-1.2	W-6.1	C-1.1	T-1		CR-2	CS-8	N-17
021	ADL Bath	F-14.1	B-2	W-6.2, W-9	C-1.2	T-1		CR-5	CS-15	N-9, N-18
022	Day Room	F-3.3	B-3	W-1.1, W-2	C-1.1	T-1	M-1	CR-1	CS-3	N-20
023	Nourishment Station	F-1	B-4	W-8	C-1.3	T-1		CR-2	CS-8	N-17
023A	Pantry	F-1	B-4	W-8	C-1.3	T-1				
024	Dining Room (Palm Court)	F-4	B-3	W-1.1, W-10.1, W-12.2	C-1.1	T-1	M-1	CR-4	CS-13.1	N-14, N-17, N-27, N-35
024A	Chair Storage	F-4	B-1.2	W-5	C-1.1	T-1				
024B	Storage	F-4	B-1.2	W-5	C-1.1	T-1				
025	Elec. Equip.	F-13.1	B-1.2	W-6.1	C-1.1	T-1				
026	Equip. Storage	F-9.1	B-1.2	W-6.1	C-1.1	T-1				
027	IT Equip.	F-9.1	B-1.2	W-6.1	C-1.1	T-1				
028	Toilet	F-12	B-5	W-1.3	C-1.1	T-1		CR-1	CS-2	N-4, N-18
029	Med. Prep.	F-9.1	B-1.2	W-6.1	C-1.1	T-1		CR-2	CS-8	N-17
030	Nurses' Station	F-4	B-1.1	W-1.2	C-1.1	T-1		CR-1	CS-12	N-6
031	Janitor	F-1	B-4	W-6.3	C-1.3	T-1				
032	Clean Linen	F-9.1	B-1.2	W-6.1	C-1.1	T-1		CR-2	CS-8	N-17
033	Soiled Linen	F-9.1	B-1.2	W-6.1	C-1.1	T-1		CR-2	CS-8	N-17
034	Day Room	F-3.3	B-3	W-1.1, W-2	C-1.1	T-1	M-1	CR-1	CS-3	N-20
035	Cinema	F-3.2	B-3	W-5	C-1.1	T-1	M-1			
036	Chapel	F-3.3	B-3	W-5	C-1.1	T-1	M-1			
037	Day Room	F-3.3	B-3	W-1.1, W-2	C-1.1	T-1	M-1	CR-1	CS-3	N-20
038	Nourishment Station	F-1	B-4	W-8	C-1.3	T-1		CR-2	CS-8	N-17
039	Soiled Linen	F-9.1	B-1.2	W-6.1	C-1.1	T-1		CR-2	CS-8	N-17
040	Clean Linen	F-9.1	B-1.2	W-6.1	C-1.1	T-1		CR-2	CS-8	N-17
041	Nurses' Station	F-4	B-1.1	W-1.2	C-1.1	T-1		CR-1	CS-12	N-6
042	Janitor	F-1	B-4	W-6.3	C-1.3	T-1				
043	Med. Prep.	F-9.1	B-1.2	W-6.1	C-1.1	T-1		CR-2	CS-8	N-17
044	Toilet	F-12	B-5	W-1.3	C-1.1	T-1		CR-1	CS-2	N-4, N-18
045	Staff Lounge	F-9.1	B-1.2	W-6.2	C-1.2	T-1		CR-2	CS-8	
046	Storage	F-9.1	B-1.2	W-6.2	C-1.2	T-1				
047	Women's Toilet	F-12	B-5	W-6.2	C-1.2	T-1		CR-2	CS-2	N-4, N-18
048	Men's Toilet	F-12	B-5	W-6.2	C-1.2	T-1		CR-2	CS-2	N-4, N-18
049	Resident Storage	F-9.1	B-1.2	W-6.1	C-1.1	T-1				
050	Resident Storage	F-9.1	B-1.2	W-6.1	C-1.1	T-1				
50A	CL Lin. Receive	F-9.1	B-1.2	W-6.1	C-1.1	T-1				N-16
50B	Office	F-9.1	B-1.2	W-6.1	C-1.1	T-1				
50C	Resident Storage	F-9.1	B-1.2	W-6.1	C-1.1	T-1				
50D	SL Lin. Holding	F-9.1	B-1.2	W-6.1	C-1.1	T-1				N-16
051	Mech. Equip.	F-13.1	B-1.2	W-6.1	C-1.1	T-1				
052	Qry. Storage	F-13.1	B-1.2	W-6.1	C-1.1	T-1				
053	Elec. Equip.	F-13.1	B-1.2	W-6.1	C-1.1	T-1				
054	Emer. Elec. Equip.	F-13.1	B-1.2	W-6.1	C-1.1	T-1				
055	Kitchen	F-1	B-4	W-6.3, W-8	C-1.3	T-1				
	Freezer	F-1	B-4	N/A	N/A	N/A				
	Cooler	F-1	B-4	N/A	N/A	N/A				
055A	Janitor	F-1	B-4	W-6.3	C-1.3	T-1				
055B	Dry Storage	F-1	B-4	W-6.3	C-1.3	T-1				
055C	Vest.	F-1	B-4	W-6.3	C-1.3	T-1				
055D	Toilet	F-1	B-4	W-6.3	C-1.3	T-1		CR-2	CS-2	N-18
055E	Office	F-1	B-4	W-6.3	C-1.3	T-1				
056	IT Equip.	F-9.1	B-1.2	W-6.1	C-1.1	T-1				
057	Elec. Equip.	F-13.1	B-1.2	W-6.1	C-1.1	T-1				
058	Equip. Storage	F-9.1	B-1.2	W-6.1	C-1.1	T-1				
059	Nourishment Station	F-1	B-4	W-8	C-1.3	T-1		CR-2	CS-8	N-17
059A	Pantry	F-1	B-4	W-8	C-1.3	T-1				N-17
060	Dining Room (Captain's Club)	F-4	B-3	W-1.1, W-10.2, W-12.2	C-1.1	T-1	M-1	CR-4	CS-13.2	N-14, N-17, N-27, N-35
060A	Storage	F-4	B-1.2	W-5	C-1.1	T-1				
060B	Chair Storage	F-4	B-1.2	W-5	C-1.1	T-1				
061	Nurses' Station	F-4	B-1.1	W-1.2	C-1.1	T-1		CR-1	CS-12	N-6
062	Toilet	F-12	B-5	W-1.3	C-1.1	T-1		CR-1	CS-2	N-4, N-18
063	Med. Prep.	F-9.1	B-1.2	W-6.1	C-1.1	T-1		CR-2	CS-8	N-17
064	Janitor	F-1	B-4	W-6.3	C-1.3	T-1				
065	Soiled Linen	F-9.1	B-1.2	W-6.1	C-1.1	T-1		CR-2	CS-8	N-17
066	Clean Linen	F-9.1	B-1.2	W-6.1	C-1.1	T-1		CR-2	CS-8	N-17
067	Day Room	F-3.3	B-3	W-1.1, W-2	C-1.1	T-1	M-1	CR-1	CS-3	N-20
068	Day Room	F-3.3	B-3	W-1.1, W-2	C-1.1	T-1	M-1	CR-1	CS-3	N-20
069	Cntrl Pnt.	F-3.1	B-1.1	W-1.2	C-1.1	T-1		CR-2	CS-8	N-8
070	Clean Linen	F-9.1	B-1.2	W-6.1	C-1.1	T-1		CR-2	CS-8	N-17
071	Soiled Linen	F-9.1	B-1.2	W-6.1	C-1.1	T-1		CR-2	CS-8	N-17
072	DON Office	F-3.3	B-1.1	W-5	C-1.1	T-1				
073	Admin Office	F-3.3	B-1.1	W-5	C-1.1	T-1				

078	Elec. Equip.	F-13.1	B-1.2	W-6.1	C-1.1	T-1				
079	Toilet	F-2.1, F-2.2	N/A	W-11.1, W-11.2, W-11.2	C-1.1	T-1		CR-5.2	CS-2	N-18
080	Shower Room	F-2.1, F-2.2	N/A	W-11.1, W-11.2, W-11.2	C-1.1	T-1				N-18
081	Tub Room	F-2.1, F-2.2	N/A	W-11.1, W-11.2, W-11.2	C-1.1	T-1				
082	Massage Room	F-11.1, F-11.2	B-1.2	W-1.3	C-1.1	T-1				
083	Spa / Salon	F-11.1, F-11.2	B-1.2	W-1.3, W-1.4	C-1.1	T-1		CR-3	CS-9	N-12, N-28
084	Janitor	F-1	B-4	W-6.3	C-1.3	T-1				
085	Women's Toilet	F-12	B-5	W-1.3, W-1.4	C-1.1	T-1		CR-1	CS-2	N-4, N-18
086	Men's Toilet	F-12	B-5	W-1.3, W-1.4	C-1.1	T-1		CR-1	CS-2	N-4, N-18
087	Spa Reception	F-3.1	B-3	W-1.1	C-1.1	T-1	M-1	CR-1	CS-14	
088	IT Equip.	F-9.1	B-1.2	W-6.1	C-1.1	T-1				
089	Rotunda	F-5.2, F-12	B-3	W-1.1	C-1.1	T-1	M-1			N-15, N-16
090	Corridor	F-3.1, F-3.4	B-3	W-1.1	C-1.1	T-1	M-1			N-6, N-8, N-11, N-31
091	Corridor	F-3.1, F-3.4	B-3	W-1.1, W-4	C-1.1	T-1	M-1			N-6, N-8, N-11, N-31
092	Corridor at Kitchen	F-9.1	B-1.2	W-6.2	C-1.2	T-1				
092A	Hall	F-9.1	B-1.2	W-6.2	C-1.2	T-1				
093	Can Wash	F-13.1	SEE EXTERIOR FINISHES							
094	Cart Wash	F-13.1	SEE EXTERIOR FINISHES							
095	Porch	F-13.2	SEE EXTERIOR FINISHES							
096	Porch	F-13.2	SEE EXTERIOR FINISHES							
097	Porch	F-13.2	SEE EXTERIOR FINISHES							
098	Porch	F-13.2	SEE EXTERIOR FINISHES							
099	Drop Off Canopy	N/A	SEE EXTERIOR FINISHES							
137	Corridor	F-3.1, F-3.2, F-3.4	B-1.1	W-1.2, W-15	C-1.1	T-1				N-5, N-6, N-7, N-8, N-23, N-24
138	Corridor	F-3.1	B-1.1	W-1.2, W-15	C-1.1	T-1				N-5, N-6, N-7, N-8
233	Corridor	F-3.1, F-3.2, F-3.4	B-1.1	W-1.2, W-15	C-1.1	T-1				N-5, N-6, N-7, N-8, N-23, N-24
317	Corridor	F-3.1, F-3.2, F-3.4	B-1.1	W-1.2, W-15	C-1.1	T-1				N-5, N-6, N-7, N-8, N-23, N-24
425	Corridor	F-3.1, F-3.2, F-3.4	B-1.1	W-1.2, W-15	C-1.1	T-1				N-5, N-6, N-7, N-8, N-23, N-24
517	Corridor	F-3.1, F-3.2, F-3.4	B-1.1	W-1.2, W-15	C-1.1	T-1				N-5, N-6, N-7, N-8, N-23, N-24
617	Corridor	F-3.1, F-3.2, F-3.4	B-1.1	W-1.2, W-15	C-1.1	T-1				N-5, N-6, N-7, N-8, N-23, N-24
733	Corridor	F-3.1, F-3.2, F-3.4	B-1.1	W-1.2, W-15	C-1.1	T-1				N-5, N-6, N-7, N-8, N-23, N-24
837	Corridor	F-3.1, F-3.2, F-3.4	B-1.1	W-1.2, W-15	C-1.1	T-1				N-5, N-6, N-7, N-8, N-23, N-24
838	Corridor	F-3.1	B-1.1	W-1.2, W-15	C-1.1	T-1				N-5, N-6, N-7, N-8
	Typical Unit	F-4	B-1.2	W-6.1	C-1.1	T-1				N-10, N-17, N-36
	Typical Unit Toilet	F-14.1, F-14.2	B-2	W-6.2, W-9	C-1.2	T-1		CR-5	CS-15	N-9, N-10, N-29, N-32, N-33
	The following Units have Typical Unit finishes with additional casework.									
108	Private Bedroom							CR-6	CS-19	
208	Private Bedroom							CR-6	CS-19	
709	Private Bedroom							CR-6	CS-19	
809	Private Bedroom							CR-6	CS-19	
NOTES:										
N-1	F-3.3 at living room areas of Lobby, F-5.2 tile border at entry area, F-5.1 tile field inside border and at corridor area between Lobby and Rotunda. See Finish Plan.									
N-2	F-5.1 field tile with F-5.2 three row border. See Finish Plan for layout.									
N-3	FRP panels to 8'-0" with epoxy wall paint above to ceiling.									
N-4	F-12 13x13 field tile installed on diagonal with half tile border at room perimeter. See Finish Plan for tile layout.									
N-5	Typical resident room corridor - W-1.2 above handrail; W-15 below handrail									
N-6	Continuous handrail to be PruittHealth standard from InPro Corporation; color - 0555 American Walnut. Handrail backer to be 3/4" x 7-1/4" S4S with eased edges painted to match T-1.									
N-8	Corner guards to be PruittHealth standard from InPro Corporation. Color at unit corridors - custom Hunter Green; color at Corridors 80, 81 and 82 - 0119 Pepperdust.									
N-9	F-14.1 12x24 tile installed in brick layout with 30% offset; F-14.2 2x2 mosaic tile at shower floor only. See Finish Plan for tile layout.									
N-10	See Finish Plan, Rooms 118 and 136, for typical floor layout at residential unit and bath.									
N-11	Install handrail and crash rail only in this corridor. Vinyl wall covering above and below handrail - no rigid vinyl sheet.									
N-12	F-11.1 18x18 and F-11.2 9x9 LVT tiles in 2-piece pattern. See Finish Plan for layout.									
N-13	F-3.2 carpet tile typical; F-6.1 and F-6.2 at putting green only; F-7 and F-8 at walking track only. See Finish Plan for layout.									
N-14	F-4 vinyl plank border to mirror ceiling feature with field installed on diagonal; mitre corners at border. See Finish Plan for layout.									
N-15	F-12 field tile installed in grid pattern with full tile border at fountain; F-5.2 border at outside edge of Rotunda with aluminum tile edge guard. See Finish Plan for tile layout.									
N-16	Provide wheeled traffic transition strip between carpet & aluminum tile edge guard; Color: Johnstone CTA-86-H Hunter Green.									
N-17	Provide transition strip between carpet & painted concrete, and between carpet and VCT or luxury vinyl flooring; Color: Johnstone CTA-86-C Hunter Green.									
N-18	Provide stone threshold at entry door to transition between tile and carpet or vinyl flooring.									
N-19	W-3.1 field tile in brick layout on lower part of wall with W-3.2 continuous horizontal accent band above.									
N-20	Fireplace to have stacked stone surround with stained wood mantle - see interior elevations for more information.									
N-21	F-10.1 half tile border at room perimeter and edge of pool with field on diagonal.									
N-22	F-10.1 typical, F-10.2 mosaic tile at shower only.									
N-23	Rigid vinyl kick plate at corridor side of unit entry doors - InPro Palladium PVC 0.60 thickness, 16", 0122 Dark Brown.									
N-24	F-3.1 field carpet tile typical at corridor; F-3.4 inset border carpet tile to mirror ceiling feature above with F-3.2 carpet tile inside border. See Finish Plan for layout and location of carpet inserts.									
N-25	W-4 glass tile backsplash at wall behind sink and coffee machine only.									
N-26	F-12 tile in brick layout.									
N-27	W-10 at serving area backsplash only; tile to extend from granite splash to underside of upper cabinet; exposed tile edges to be bullnosed. See interior elevations for more information.									
N-28	W-1.3 wall covering typical; W-1.4 accent wall covering at one wall. See Finish Plan for location and limits of accent wall covering.									
N-29	W-9 wall tile at shower only with bullnose tiles at vertical and horizontal exposed edges. W-6.2 painted drywall at all other walls.									
N-30	F-5.2 tile in EDF niche only. W-4 glass tile at wall behind EDF only - see interior elevations for more information.									
N-31	F-3.1 typical, F-3.4 half-tile border at Rotunda end of corridor. W-4 at wall behind drinking fountains only - see Interior Elevation for more information.									
N-32	Rondec Schutter RO60AT at 5' A.F.F. top edge of tile.									
N-33	B-2 tile base at vanity area only. No tile base at shower.									
N-34	W-15 tile backsplash at cabinets to extend from granite backsplash to underside of wall cabinets and bridge.									
N-35	W-1.1 wall covering above chair rail, W-12.2 rigid vinyl sheet below chair rail - all walls. Install continuous handrail backer trim (3/4" x 7-1/4" S4S eased edges painted to match T-1) at top of rigid vinyl sheet.									
N-36	Unit window sills to be 5/8" Venetian Marble Polar White.									
END OF ROOM FINISH SCHEDULE										







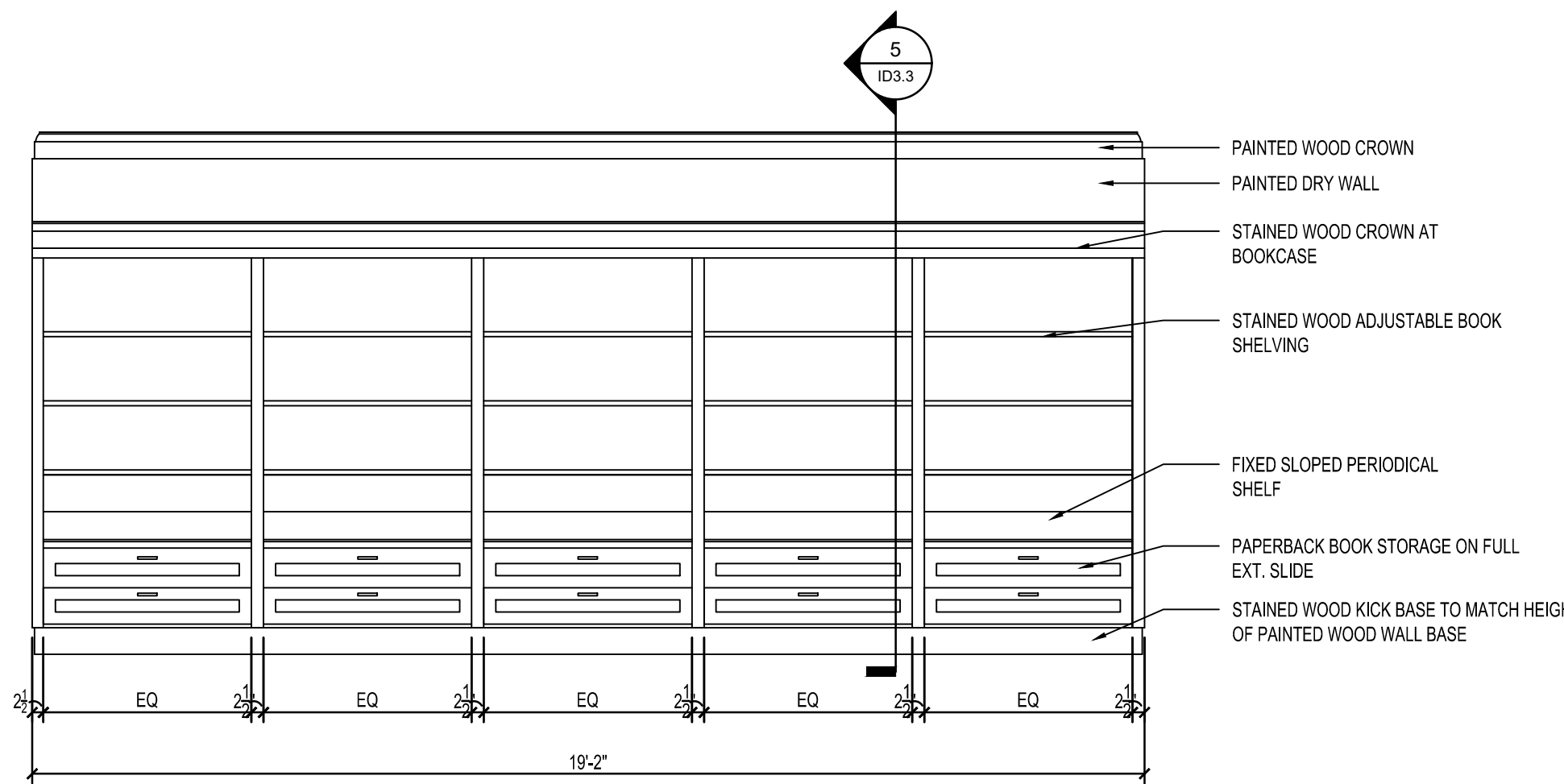
NO.	DATE	DESCRIPTION
1	01/16/23	REVISION
2	-/-/-	-
3	-/-/-	-
4	-/-/-	-
5	-/-/-	-
6	-/-/-	-

Sheet Title:

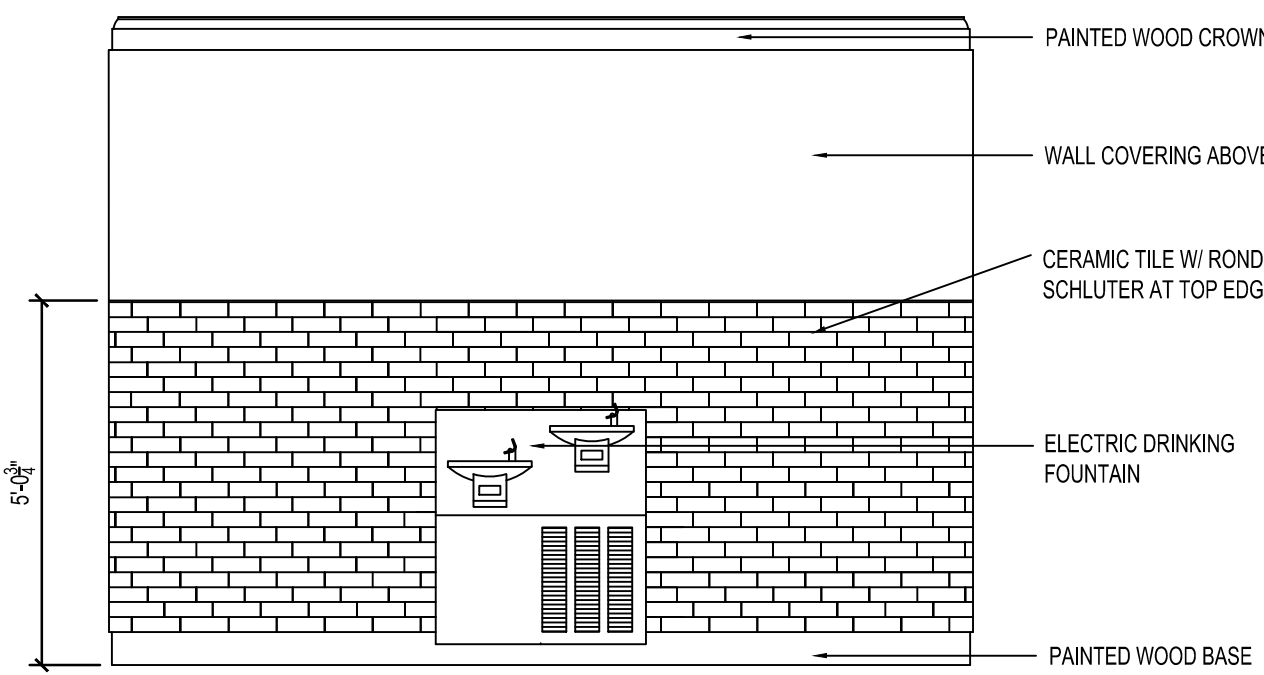
INTERIOR  
ELEVATIONS

Date: 09/29/2021  
Project No.: 202115

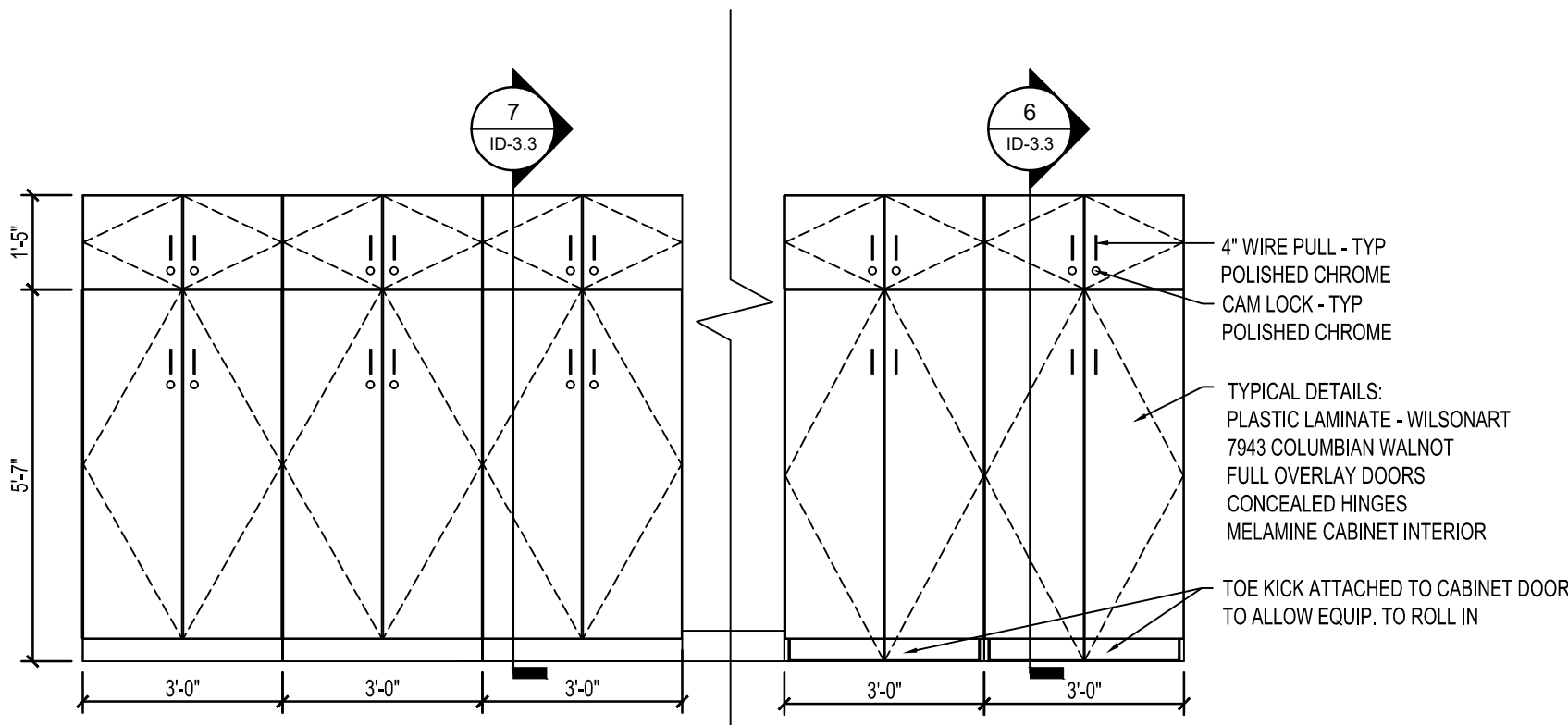
ID3.0



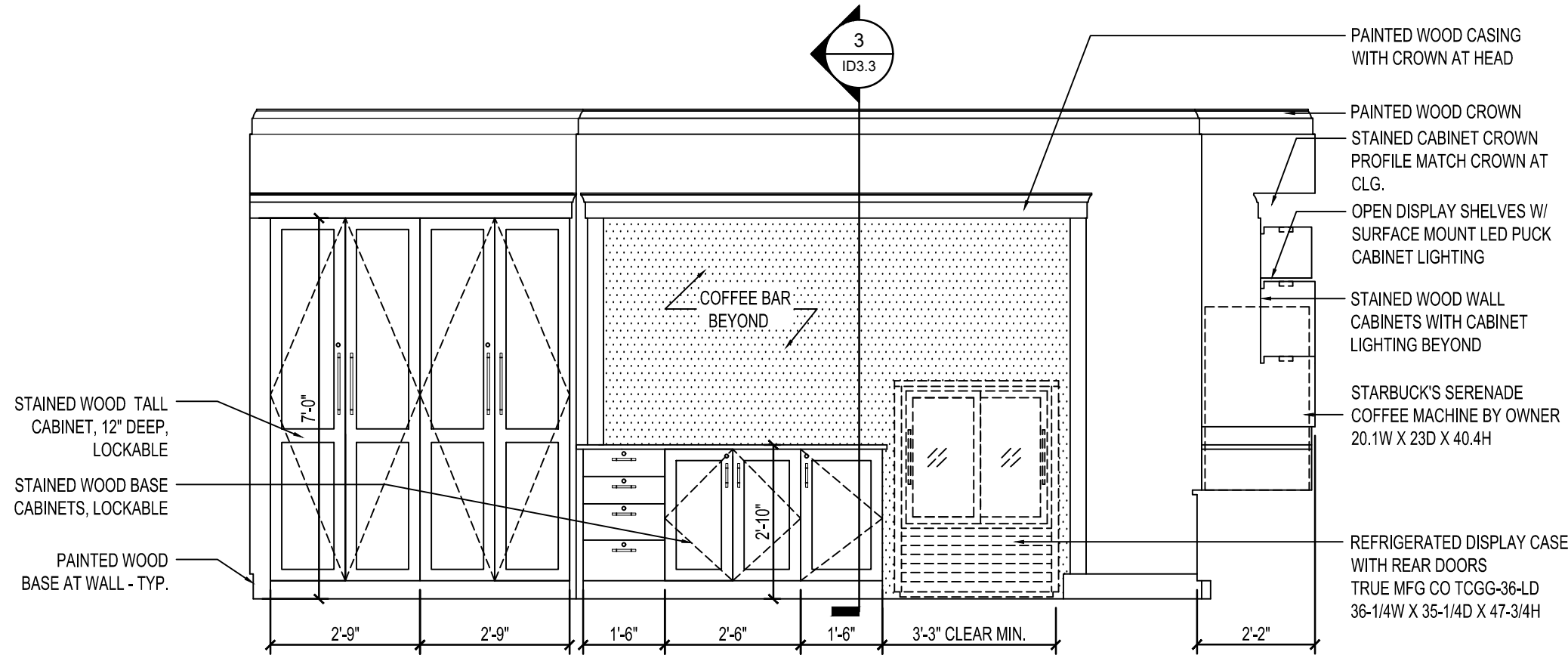
5 ELEVATION AT LIBRARY SHELVING  
SCALE: 3/8" = 1'-0"



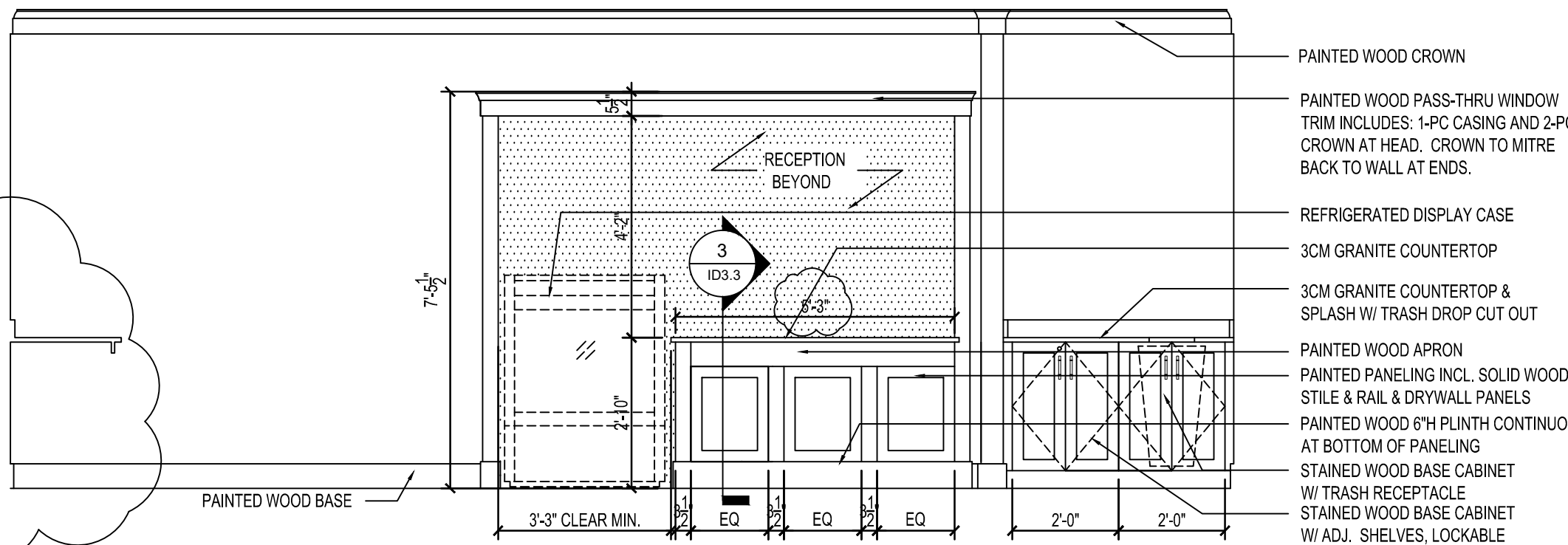
8 ELEVATION AT EDF  
SCALE: 3/8" = 1'-0"



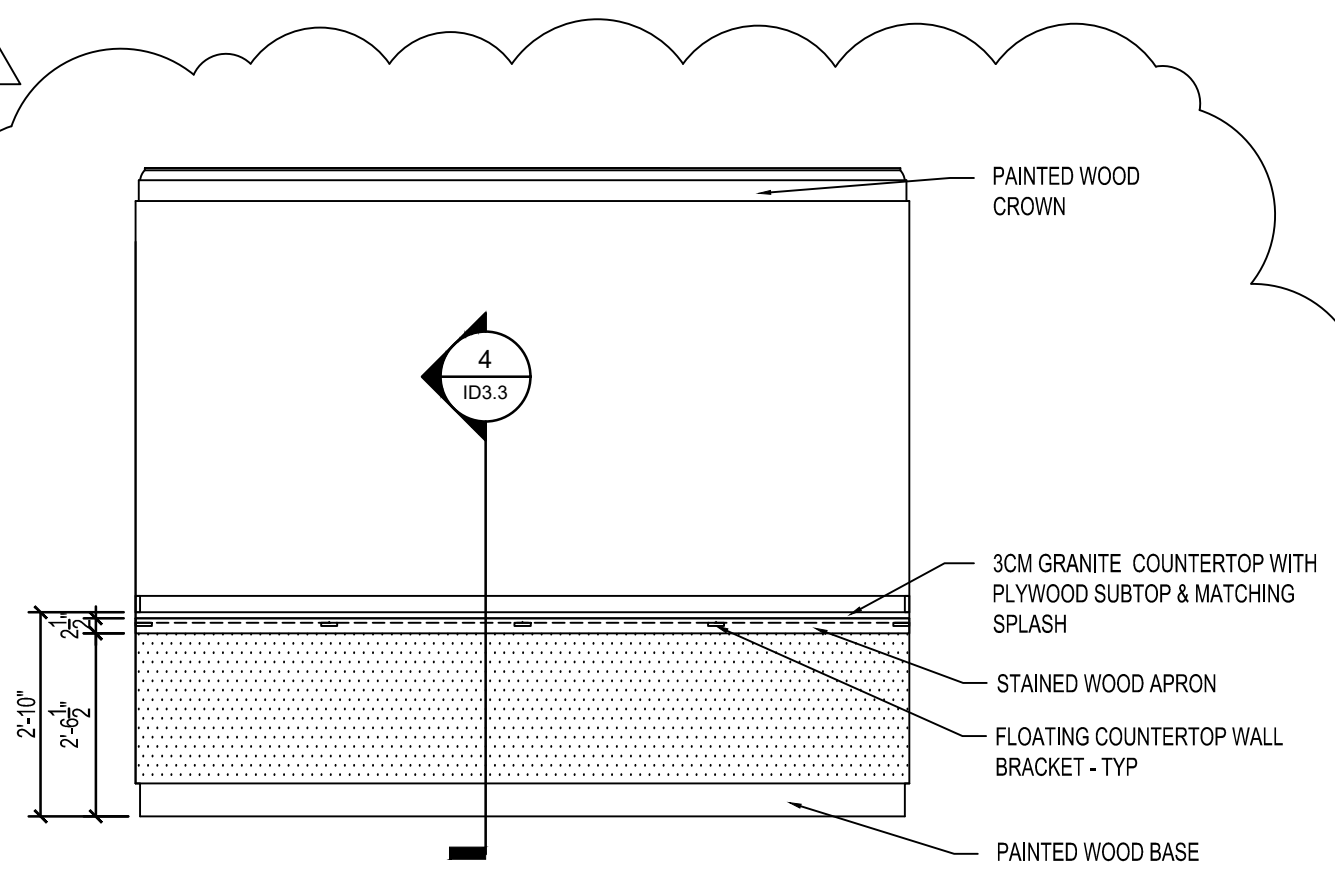
7 ELEVATION AT FITNESS STORAGE  
SCALE: 3/8" = 1'-0"



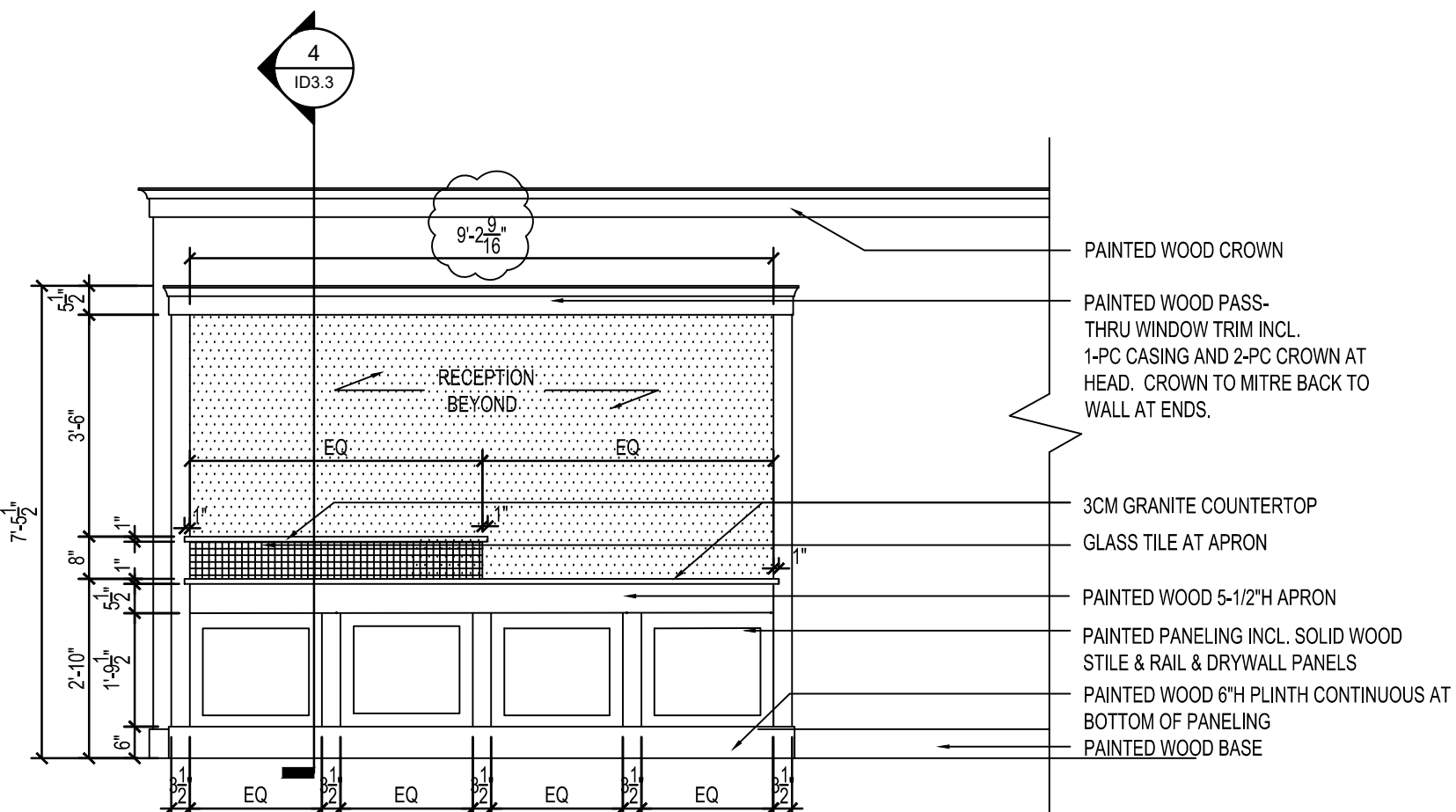
3 ELEVATION AT COFFEE BAR  
SCALE: 3/8" = 1'-0"



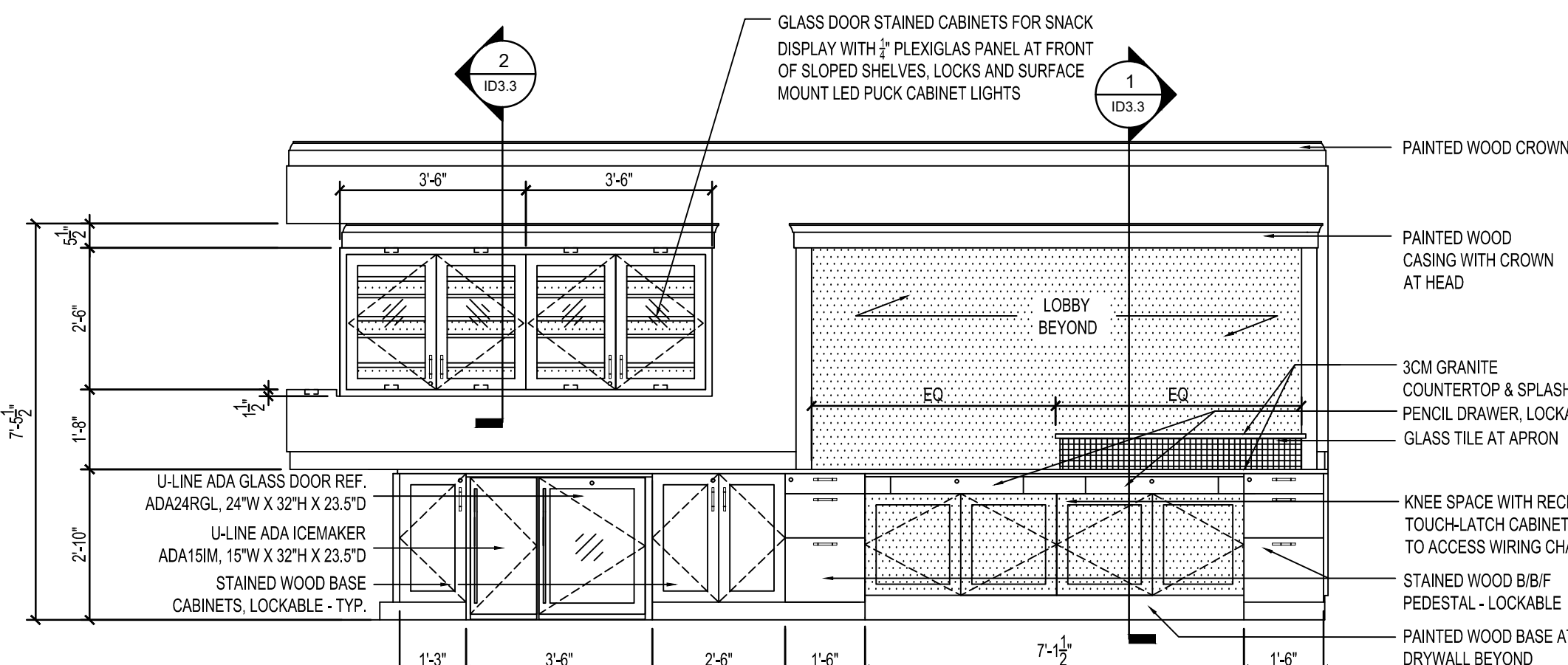
2 ELEVATION AT COFFEE BAR RECEPTION  
SCALE: 3/8" = 1'-0"



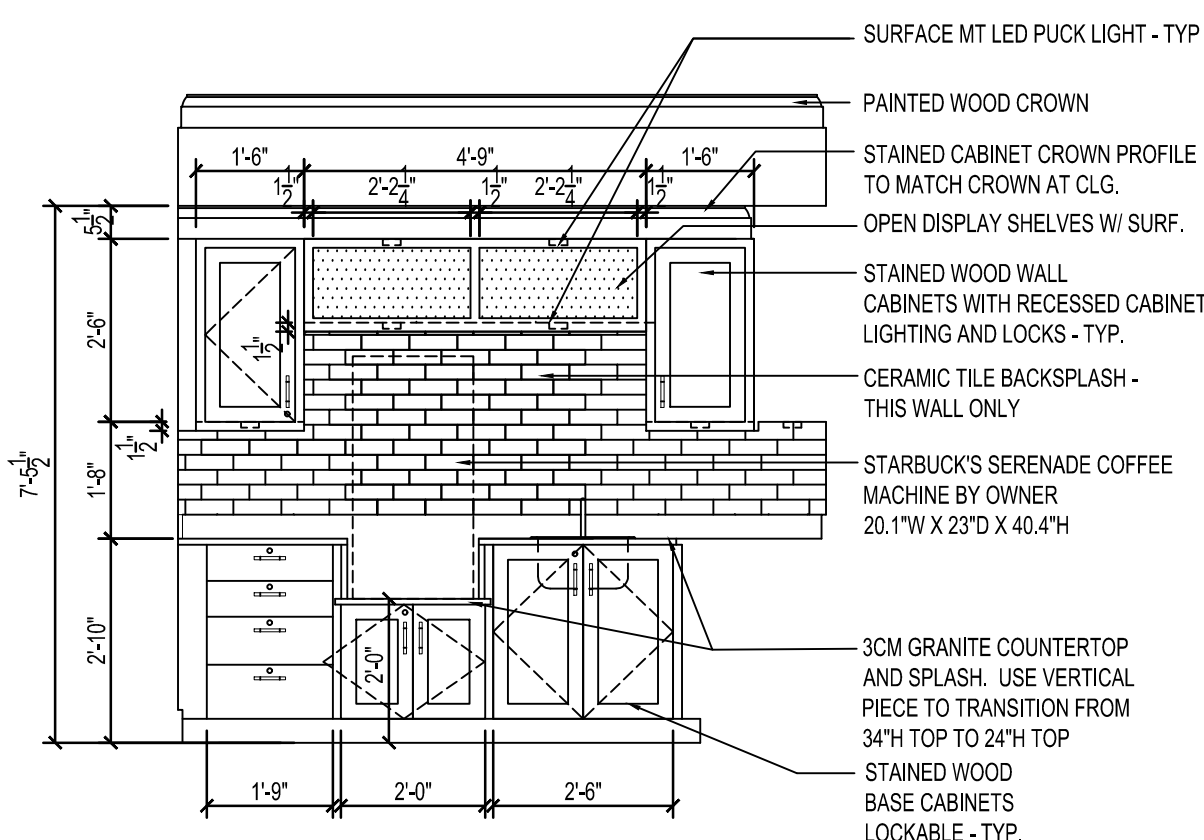
4 ELEVATION AT COFFEE BAR COUNTER  
SCALE: 3/8" = 1'-0"



1 ELEVATION AT LOBBY RECEPTION  
SCALE: 3/8" = 1'-0"

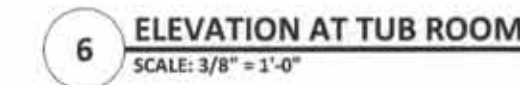
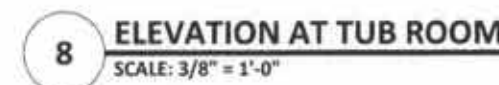
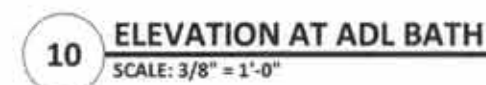
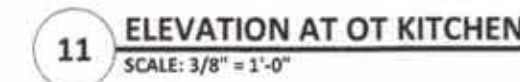


2 ELEVATION AT COFFEE BAR RECEPTION  
SCALE: 3/8" = 1'-0"



3 ELEVATION AT COFFEE BAR  
SCALE: 3/8" = 1'-0"







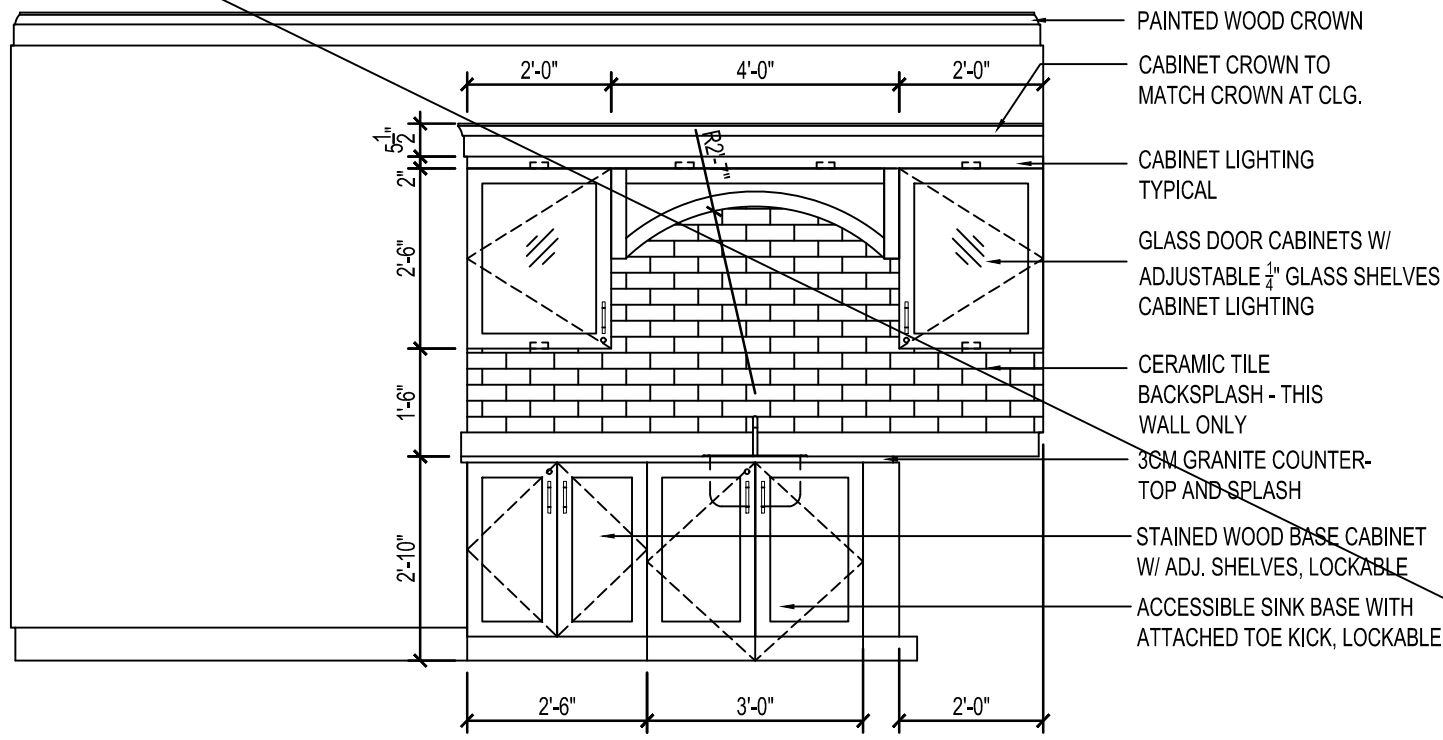
NO.	DATE	DESCRIPTION
1	12/8/22	REVISION
2	-/-/-	-
3	-/-/-	-
4	-/-/-	-
5	-/-/-	-
6	-/-/-	-

Sheet Title:

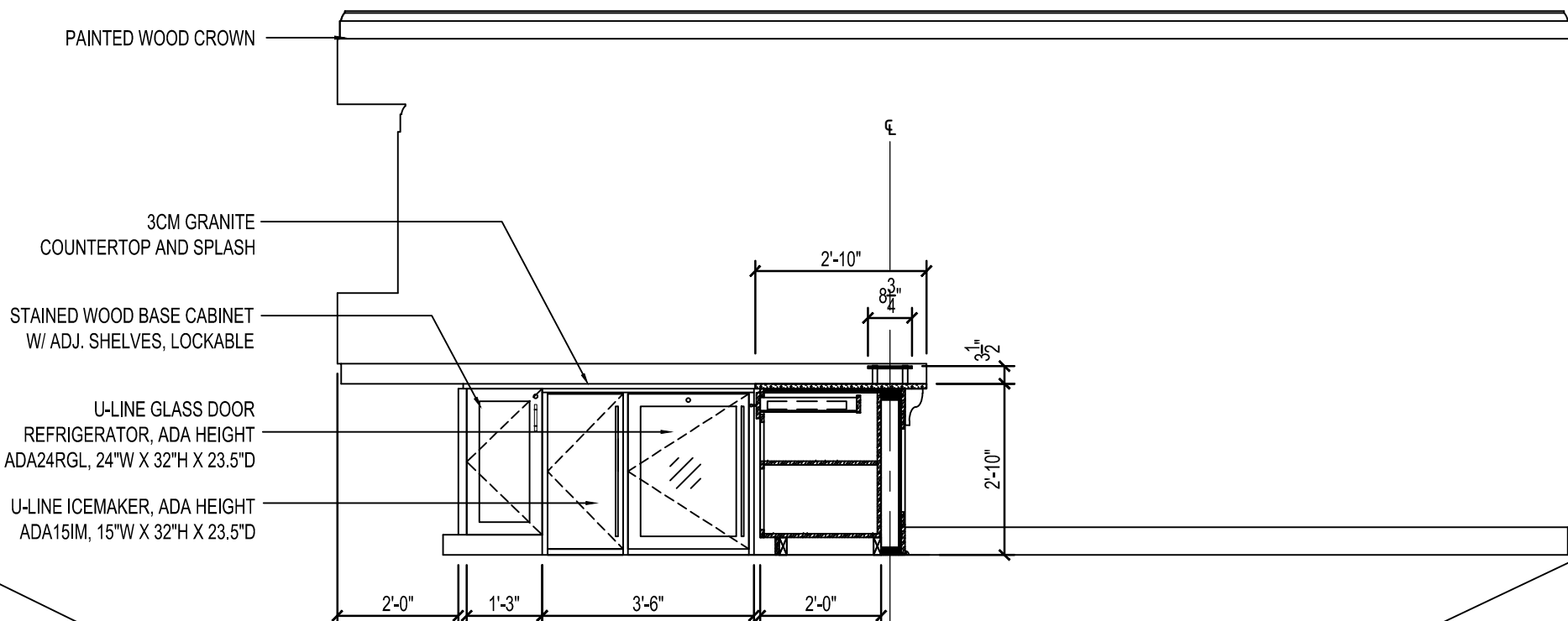
INTERIOR  
ELEVATIONS

Date: 09/29/2021  
Project No.: 202115

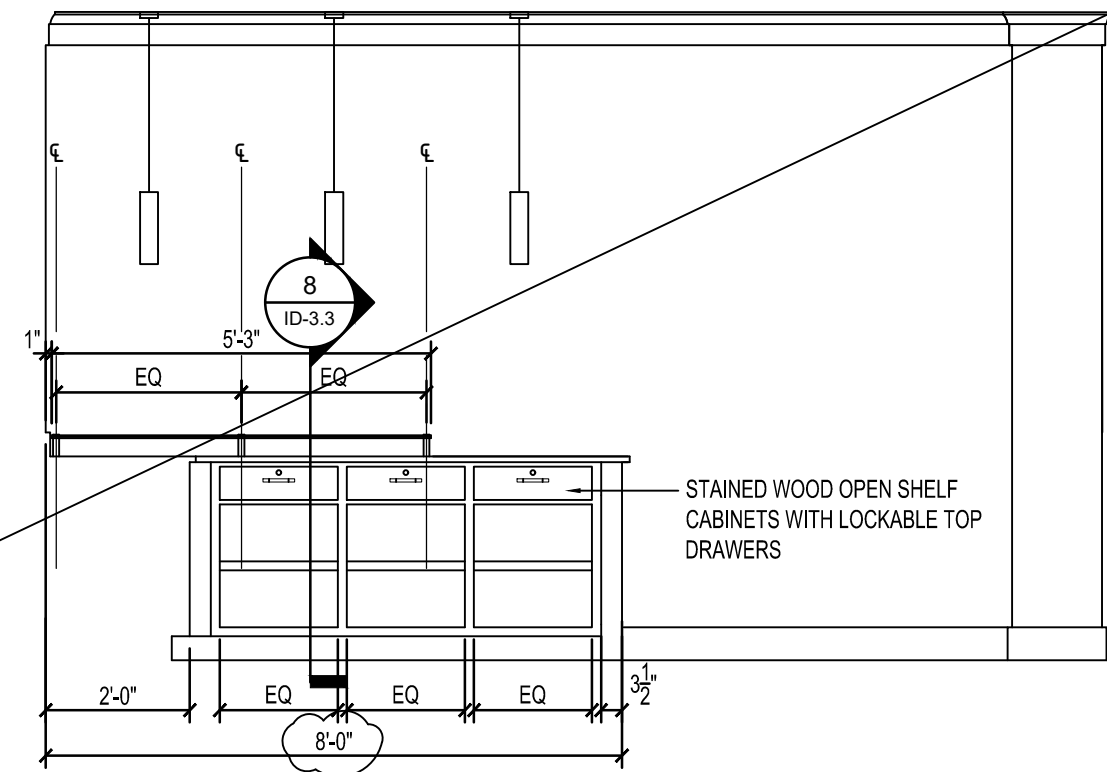
ID3.2



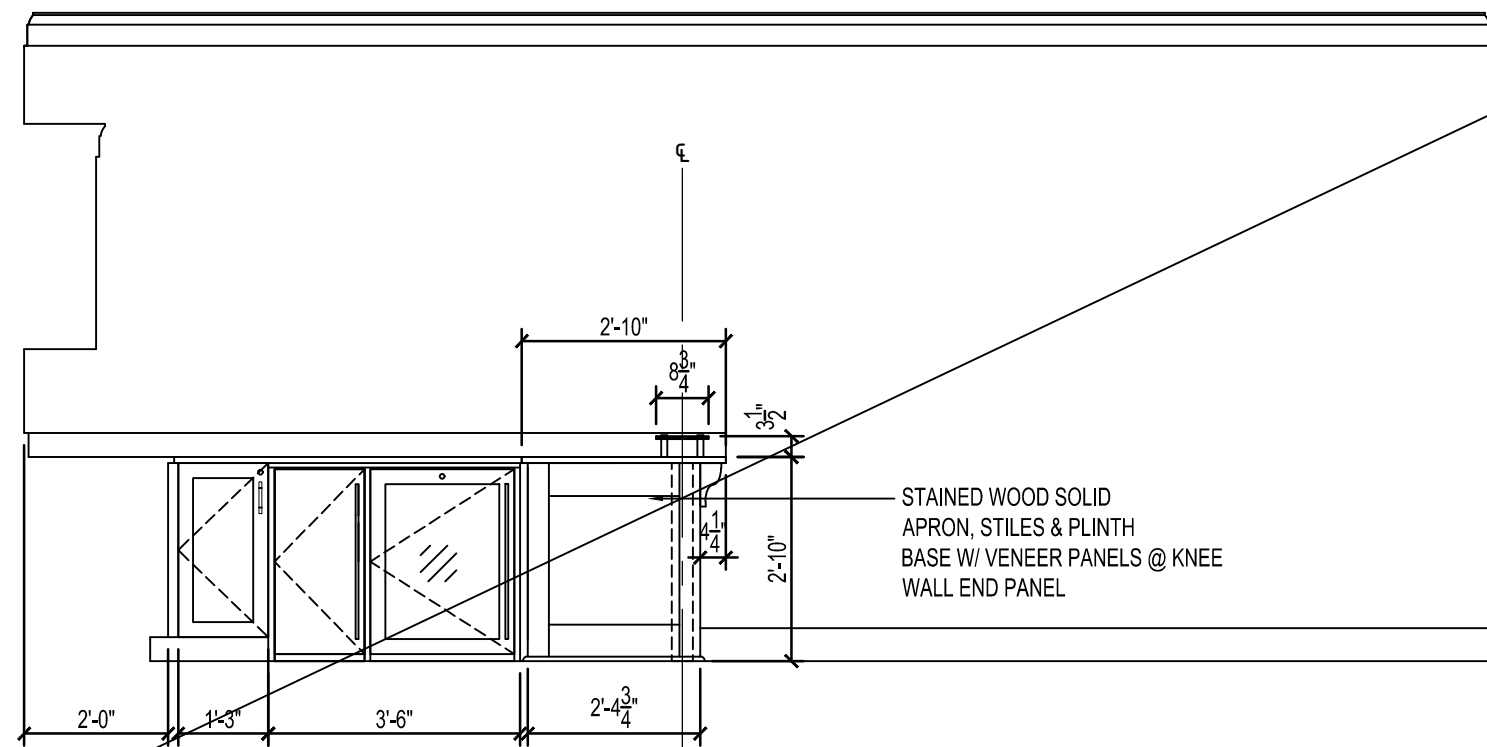
8 ELEVATION AT SPORTS BAR  
SCALE: 3/8" = 1'-0"



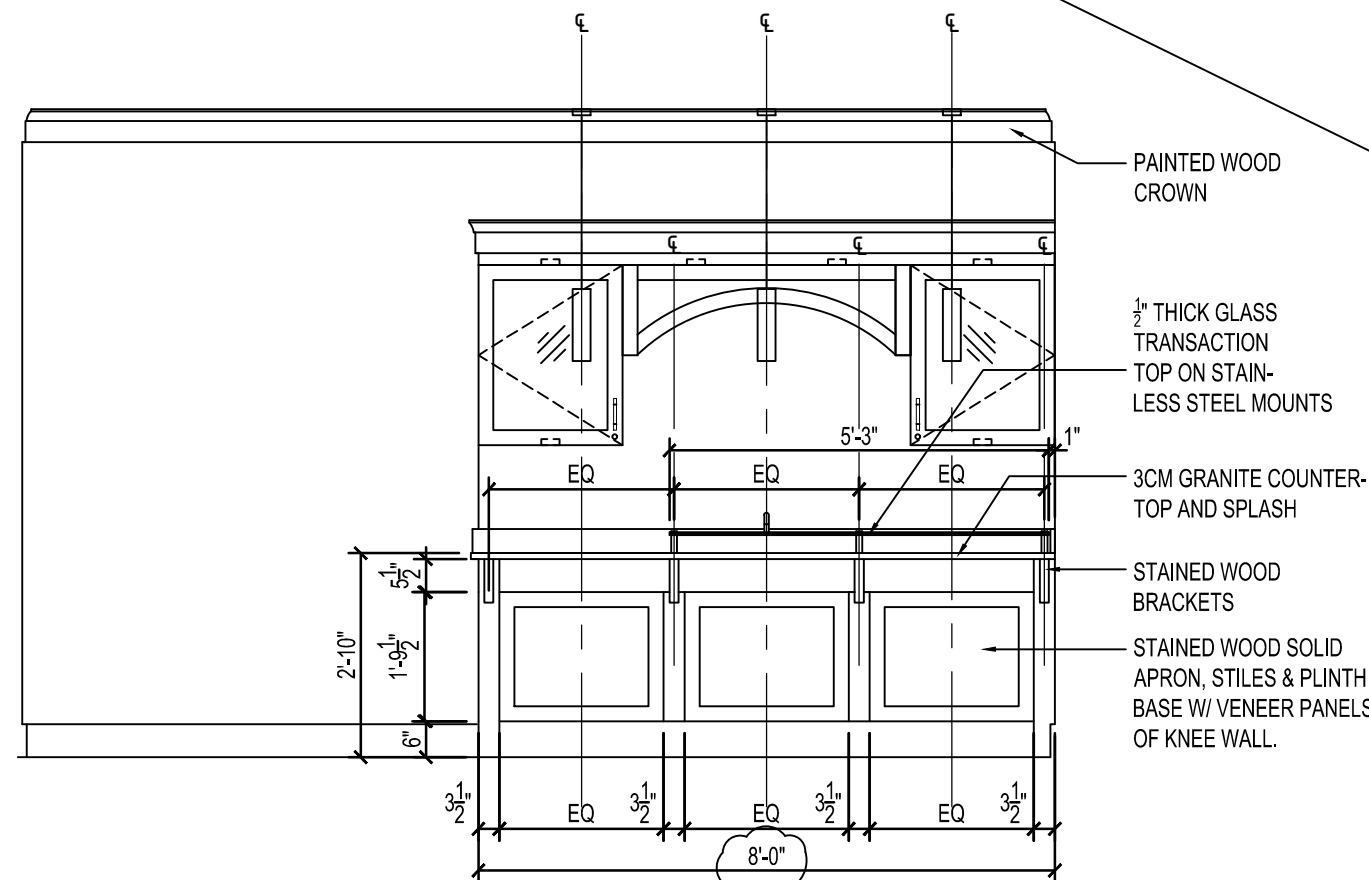
7 ELEVATION AT SPORTS BAR  
SCALE: 3/8" = 1'-0"



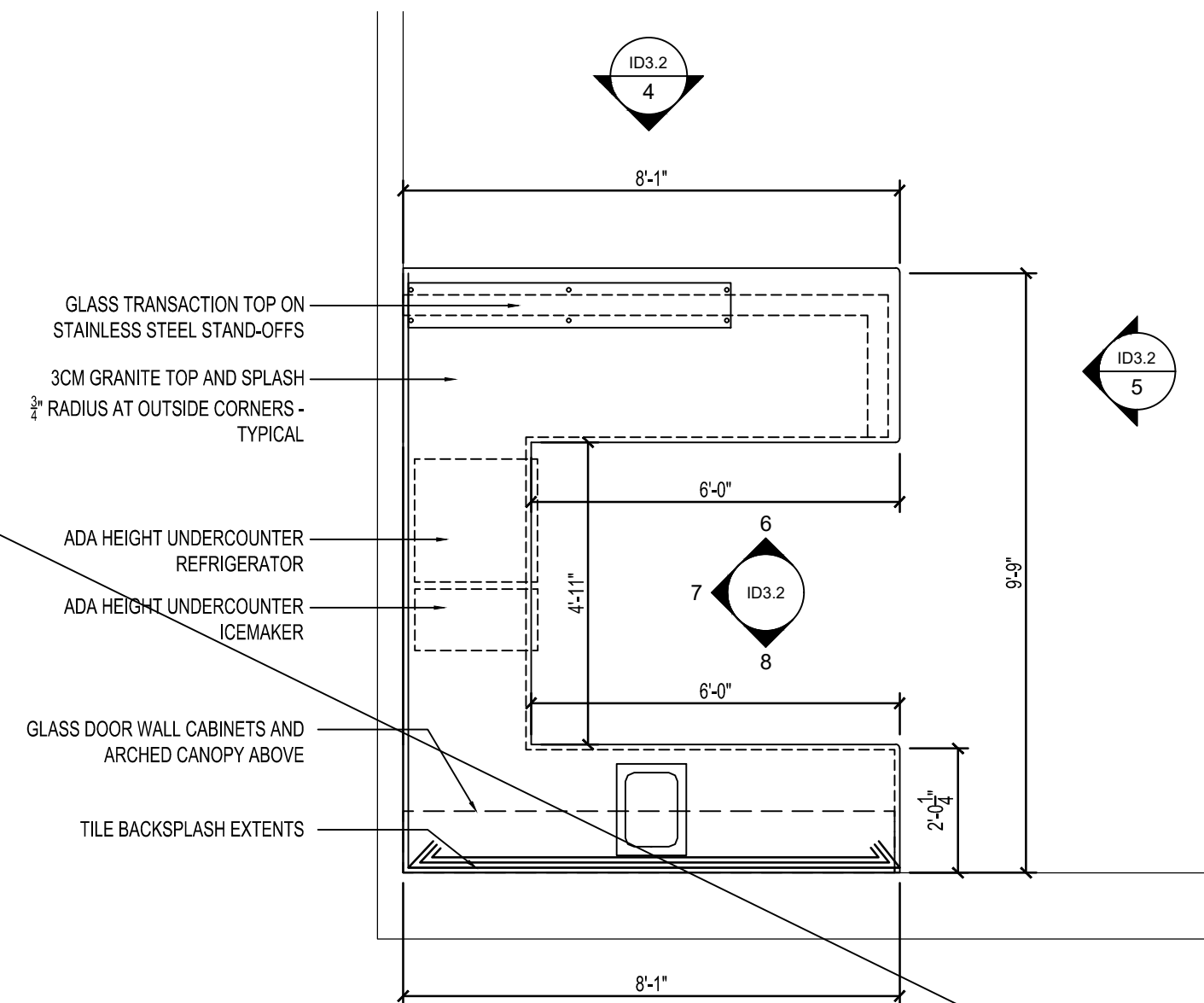
6 ELEVATION AT SPORTS BAR  
SCALE: 3/8" = 1'-0"



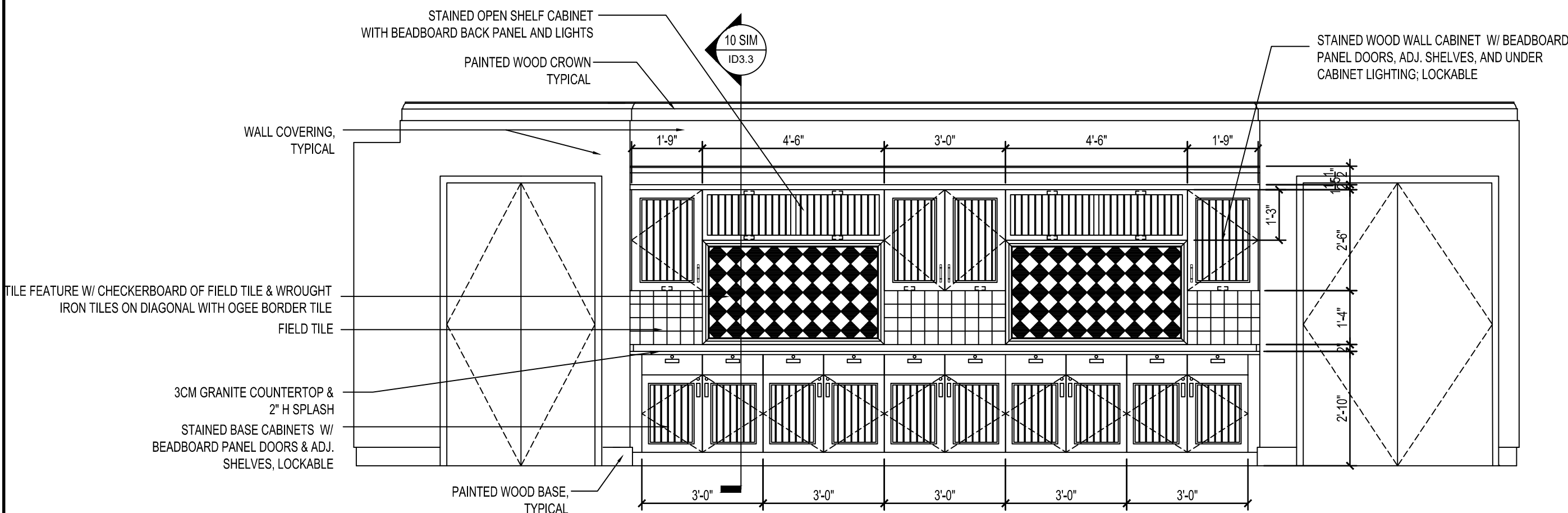
5 ELEVATION AT SPORTS BAR  
SCALE: 3/8" = 1'-0"



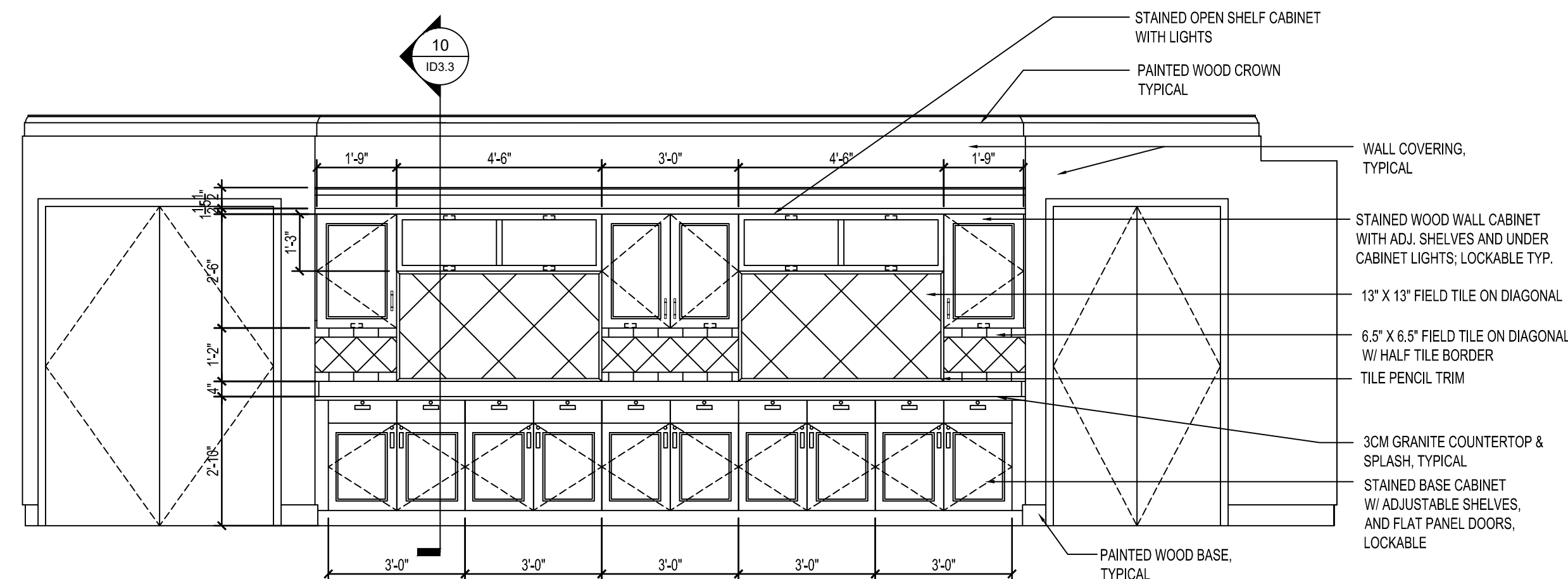
4 ENLARGED PLAN AT SPORTS BAR  
SCALE: 3/8" = 1'-0"



3 ENLARGED PLAN AT SPORTS BAR  
SCALE: 3/8" = 1'-0"

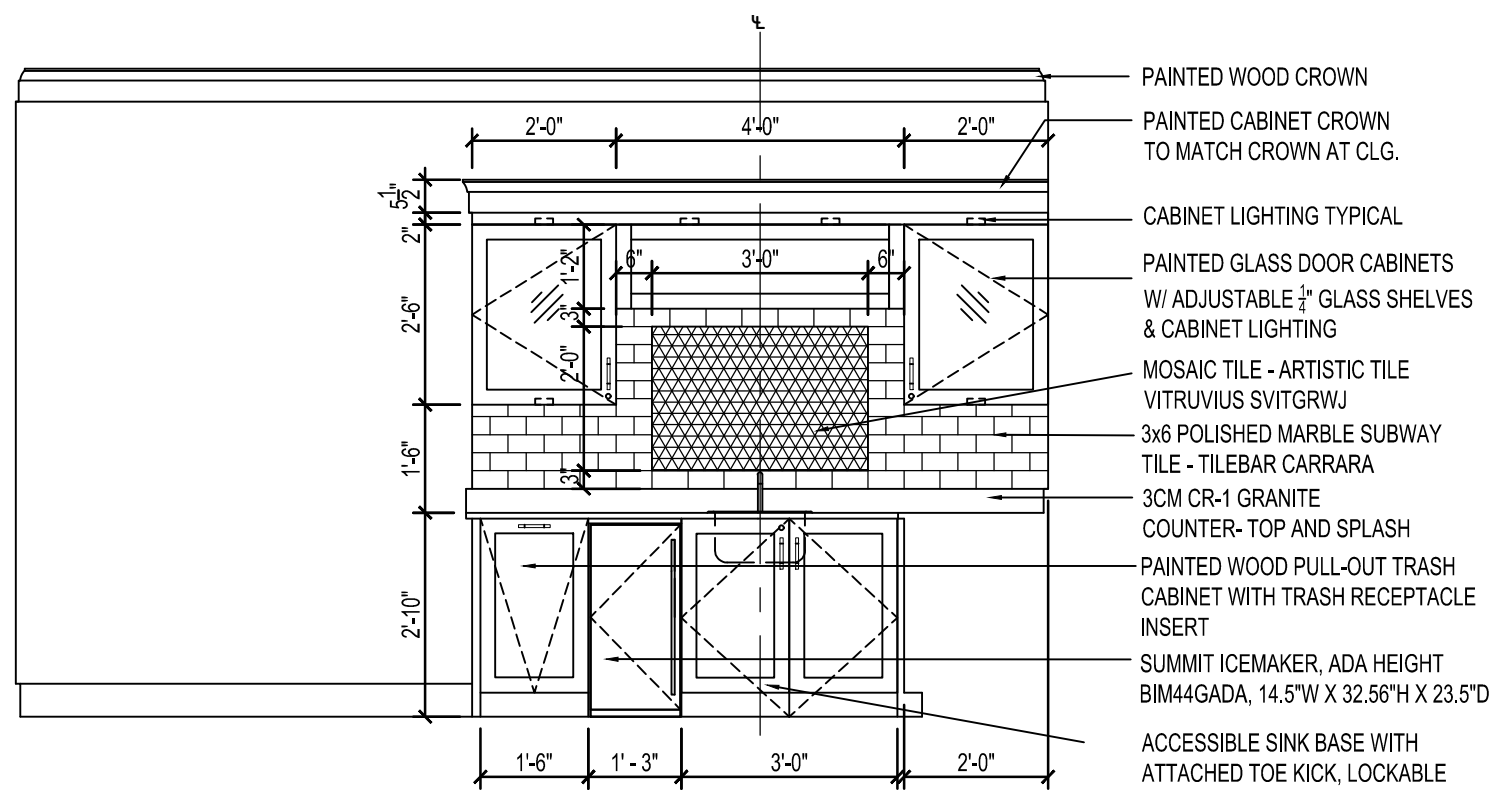


2 ELEVATION AT DINING  
SCALE: 3/8" = 1'-0"

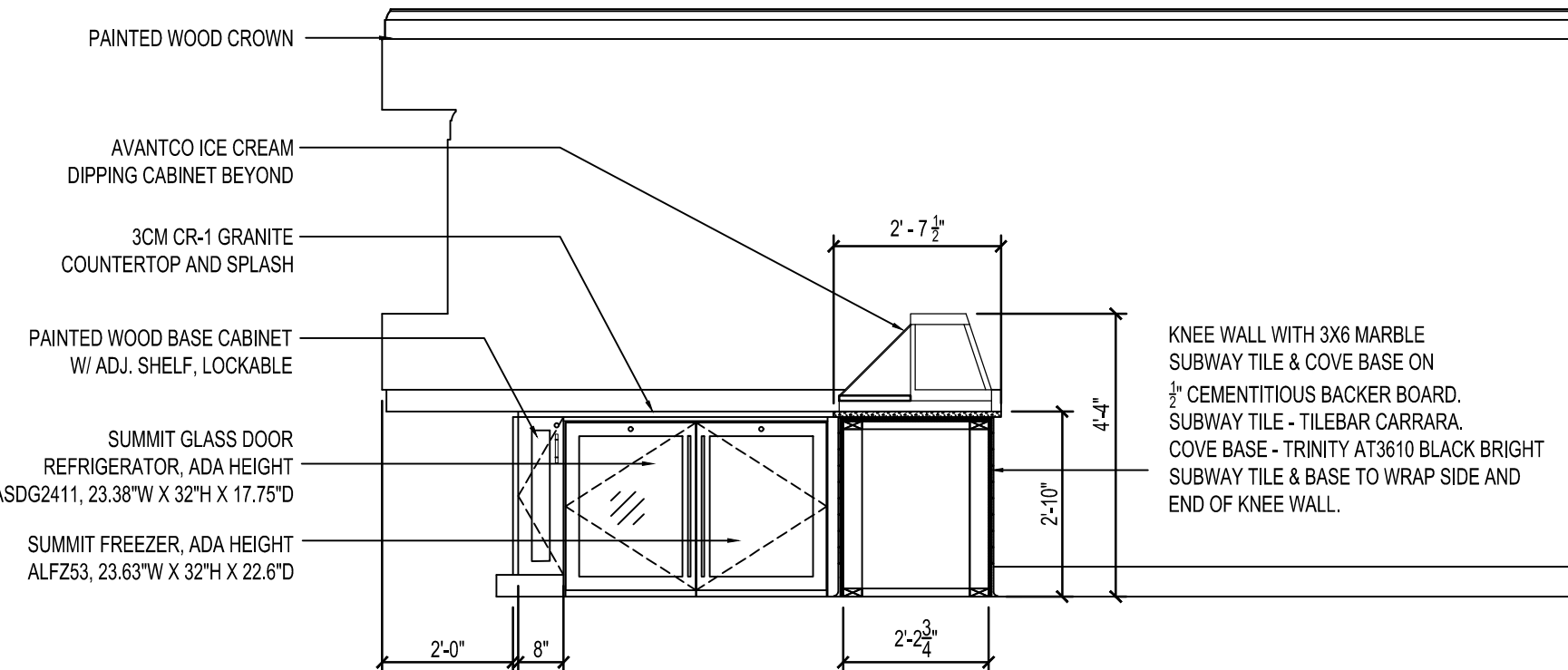


1 ELEVATION AT DINING  
SCALE: 3/8" = 1'-0"

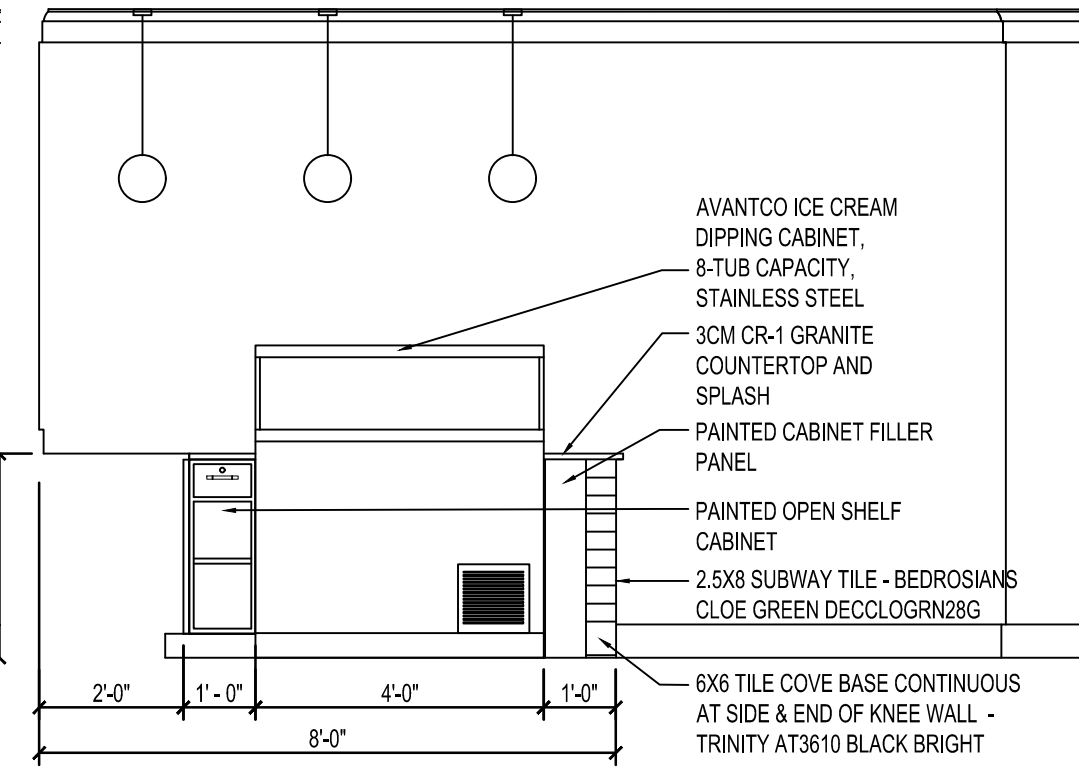




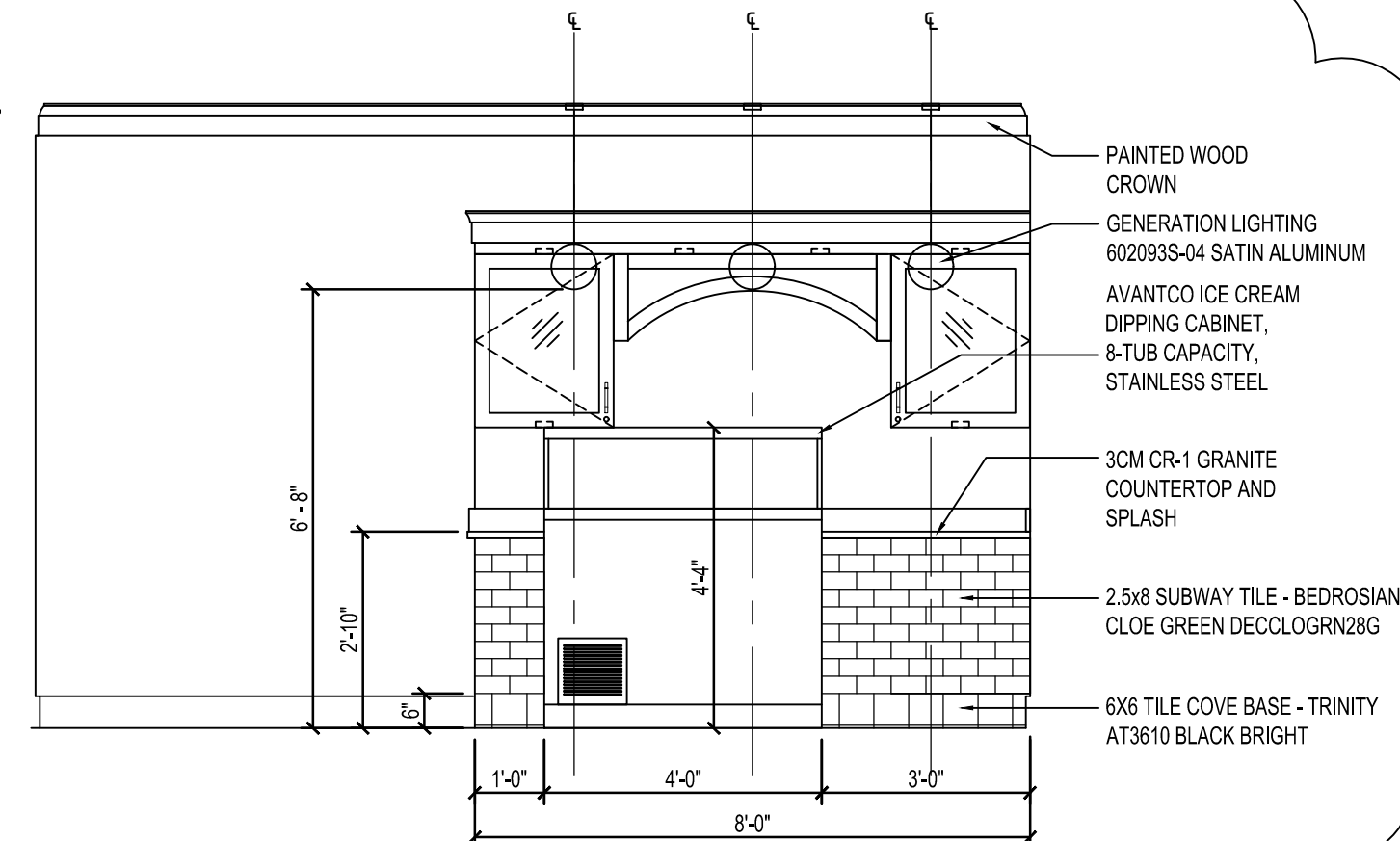
15 ICE CREAM CAFE - CASEWORK BACK BAR ELEVATION  
SCALE: 3/8" = 1'-0"



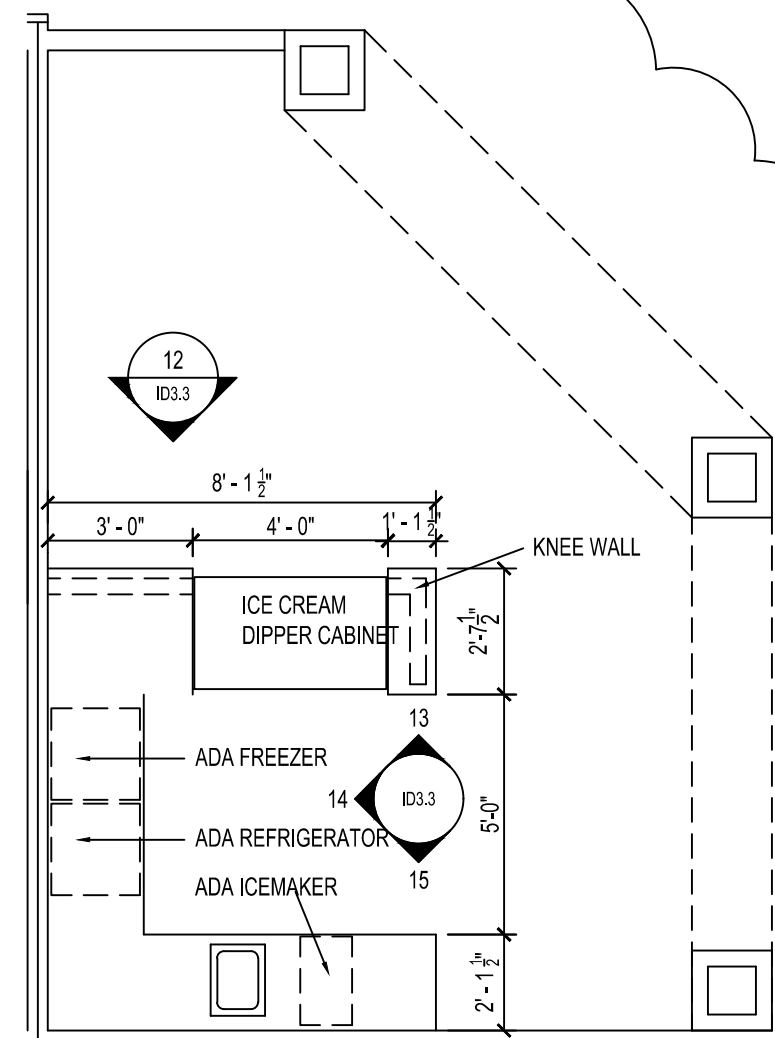
14 ICE CREAM CAFE - CASEWORK SIDE BAR ELEVATION  
SCALE: 3/8" = 1'-0"



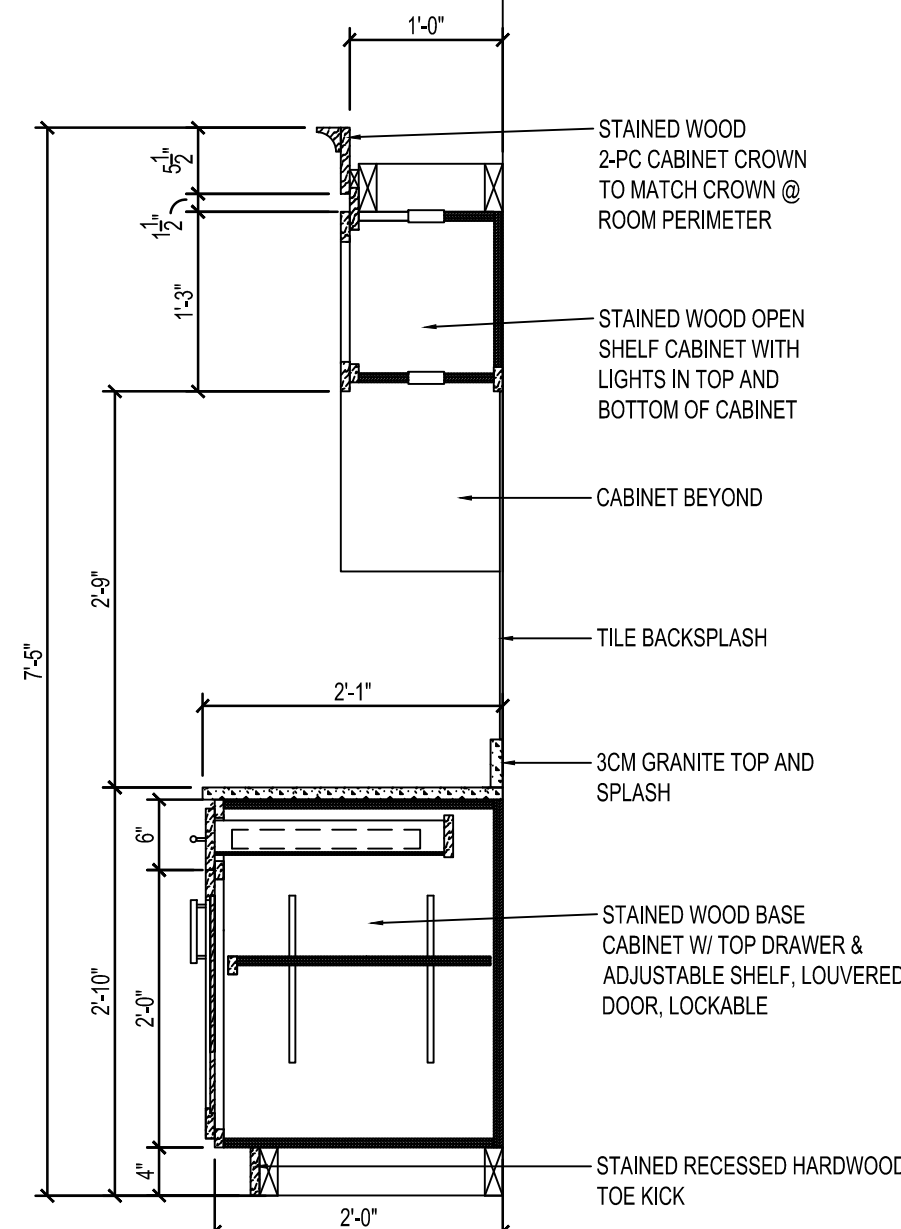
13 ICE CREAM CAFE - KNEE WALL CASEWORK BACK ELEVATION  
SCALE: 3/8" = 1'-0"



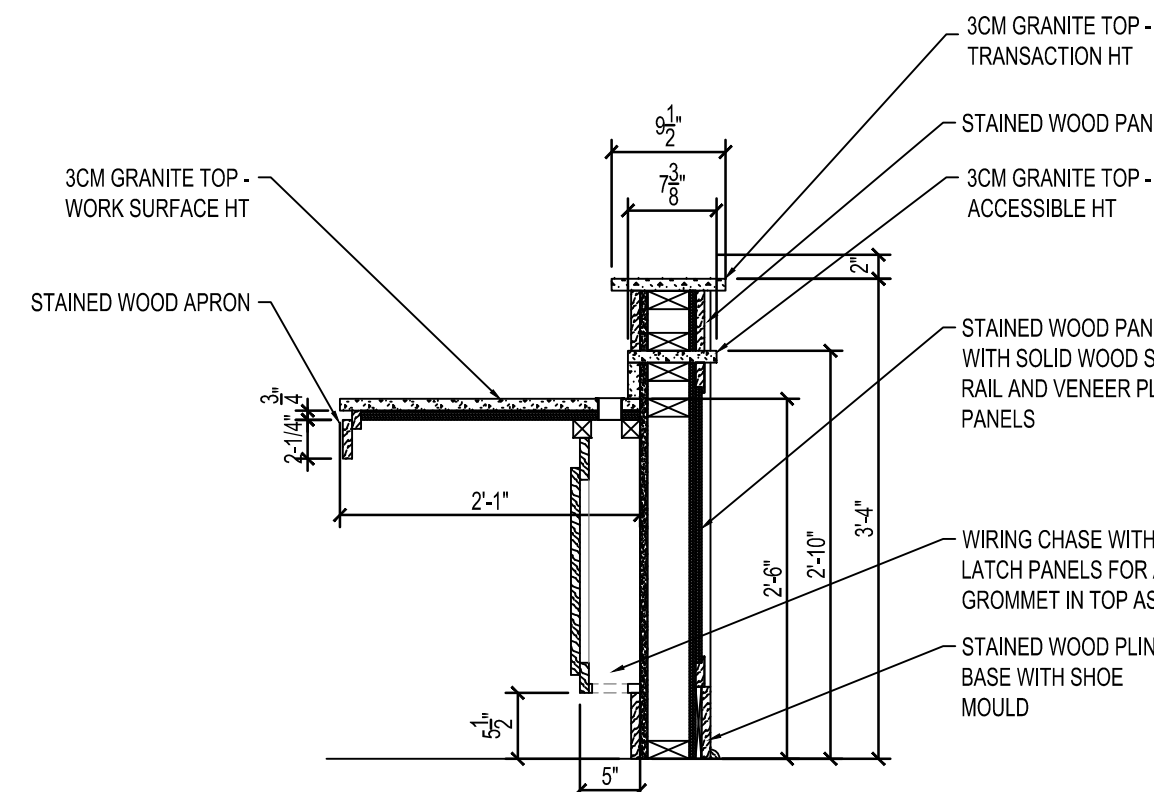
12 ICE CREAM CAFE - KNEE WALL FRONT ELEVATION  
SCALE: 3/8" = 1'-0"



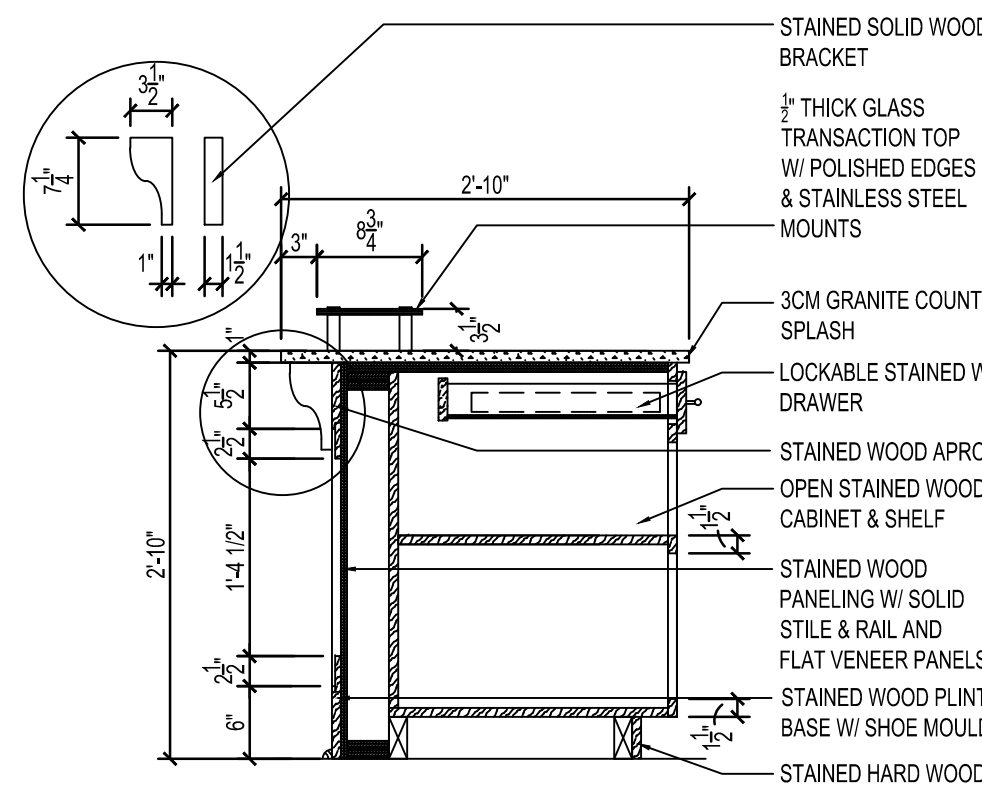
11 ICE CREAM CAFE PLAN  
SCALE: 1/4" = 1'-0"



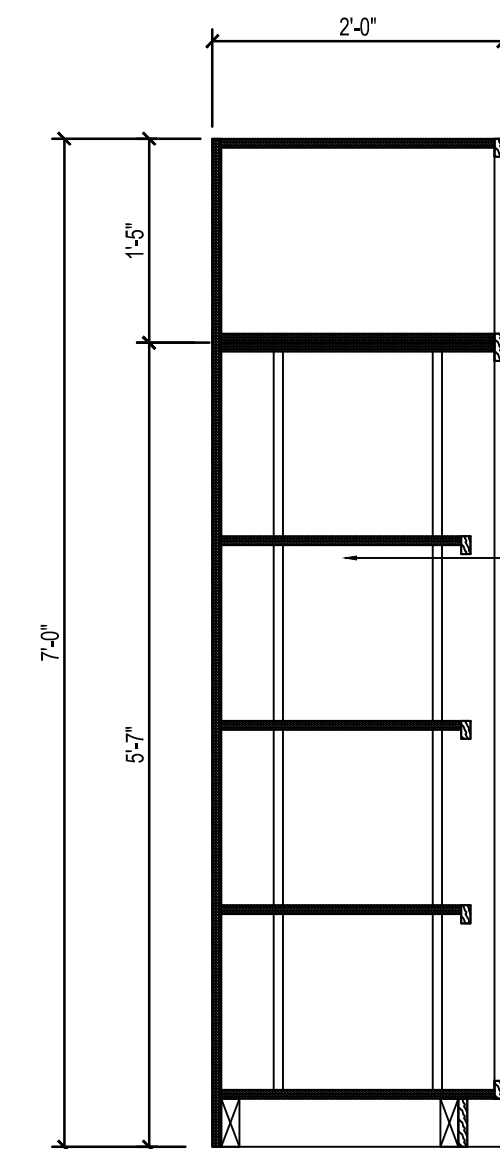
10 SECTION AT DINING SERVING  
SCALE: 3/4" = 1'-0"



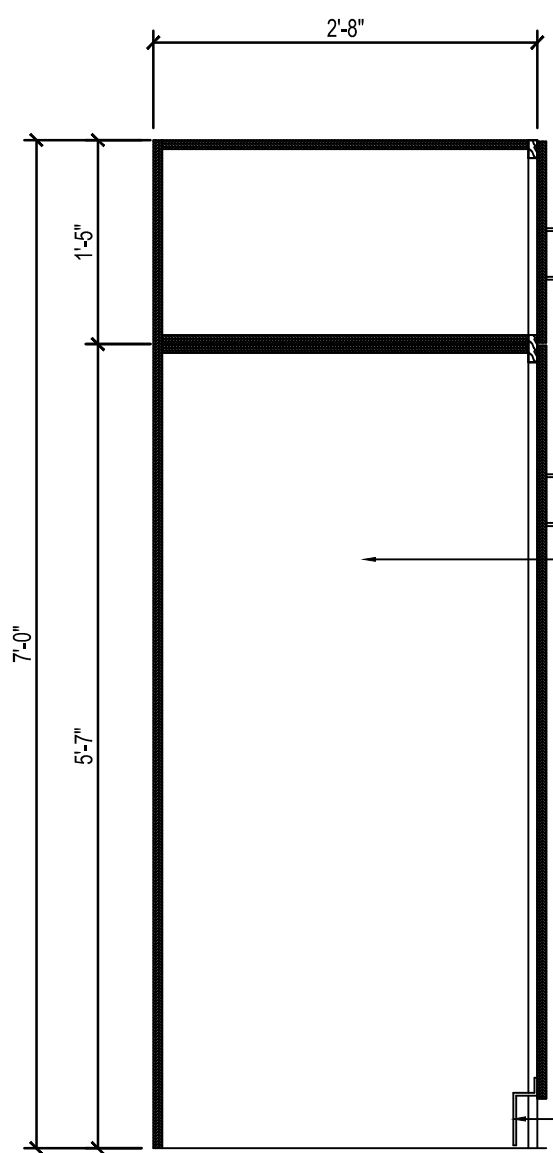
9 SECTION AT WAITING WORK STATION  
SCALE: 3/4" = 1'-0"



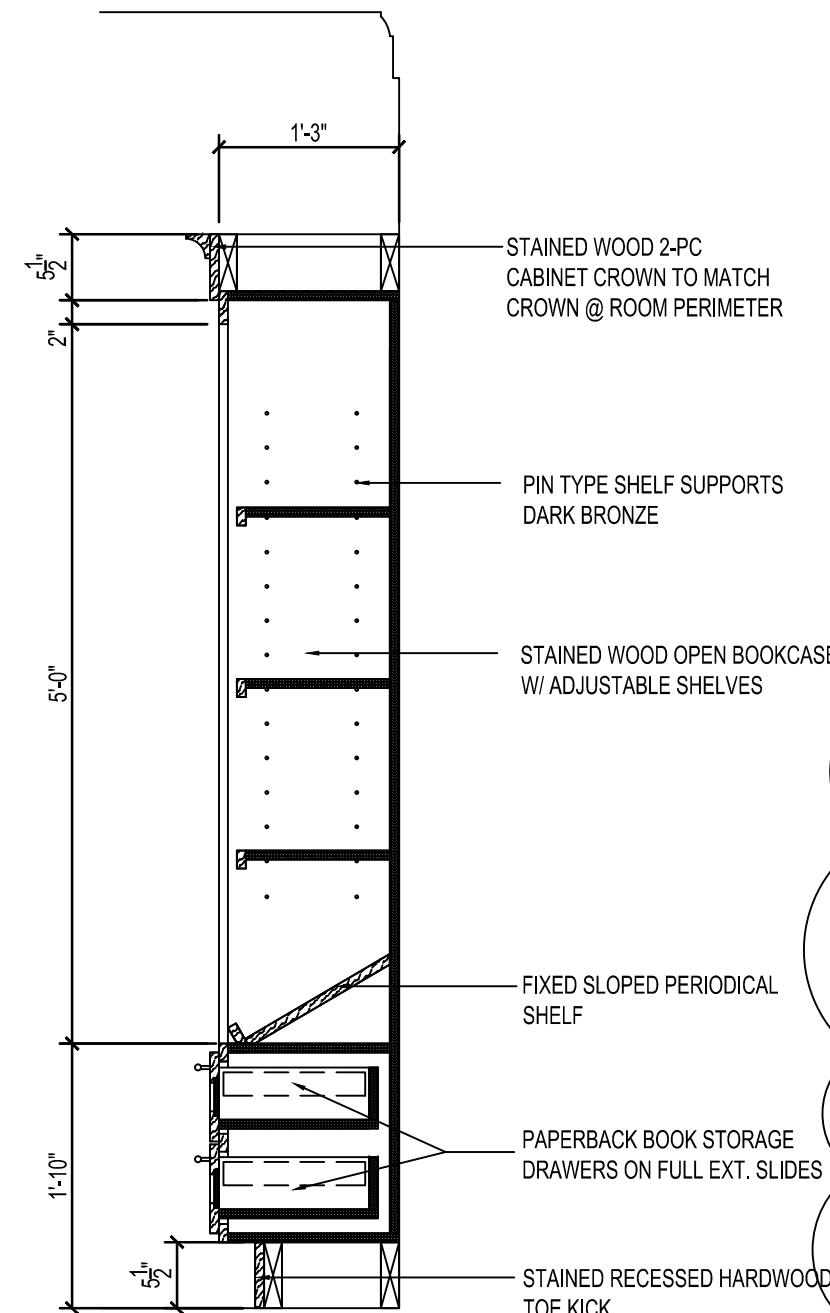
8 SECTION AT SPORTS BAR  
SCALE: 3/4" = 1'-0"



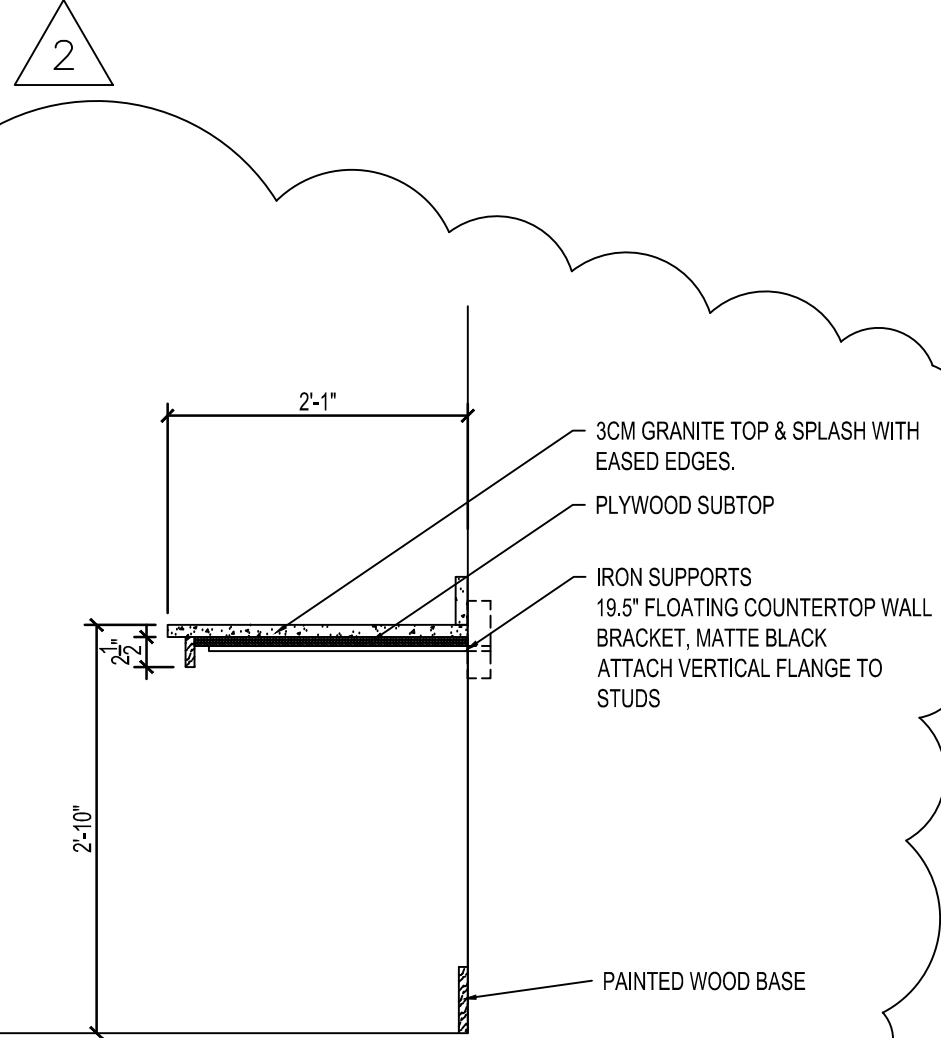
7 SECTION AT THERAPY CABINET  
SCALE: 3/4" = 1'-0"



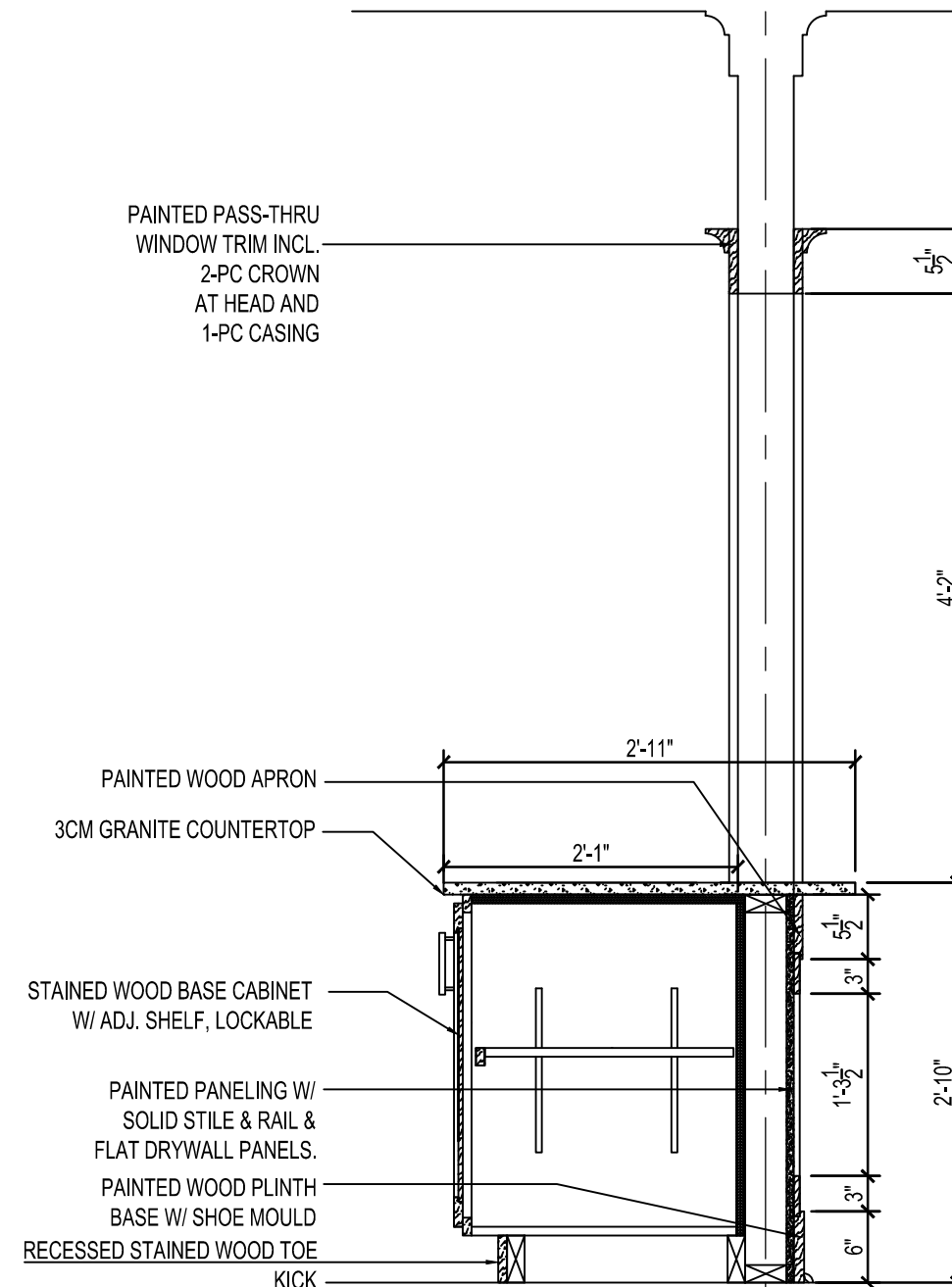
6 SECTION AT THERAPY ROLL-IN CABINET  
SCALE: 3/4" = 1'-0"



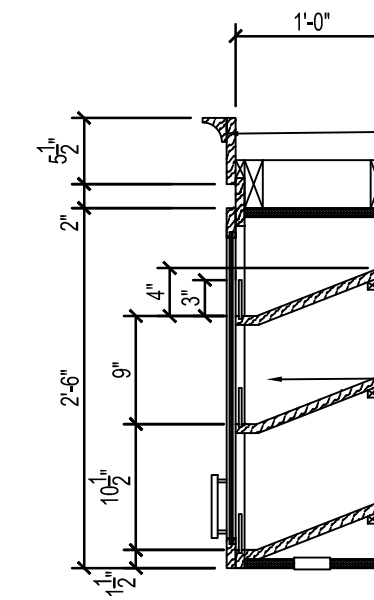
5 SECTION AT LIBRARY BOOKCASE  
SCALE: 3/4" = 1'-0"



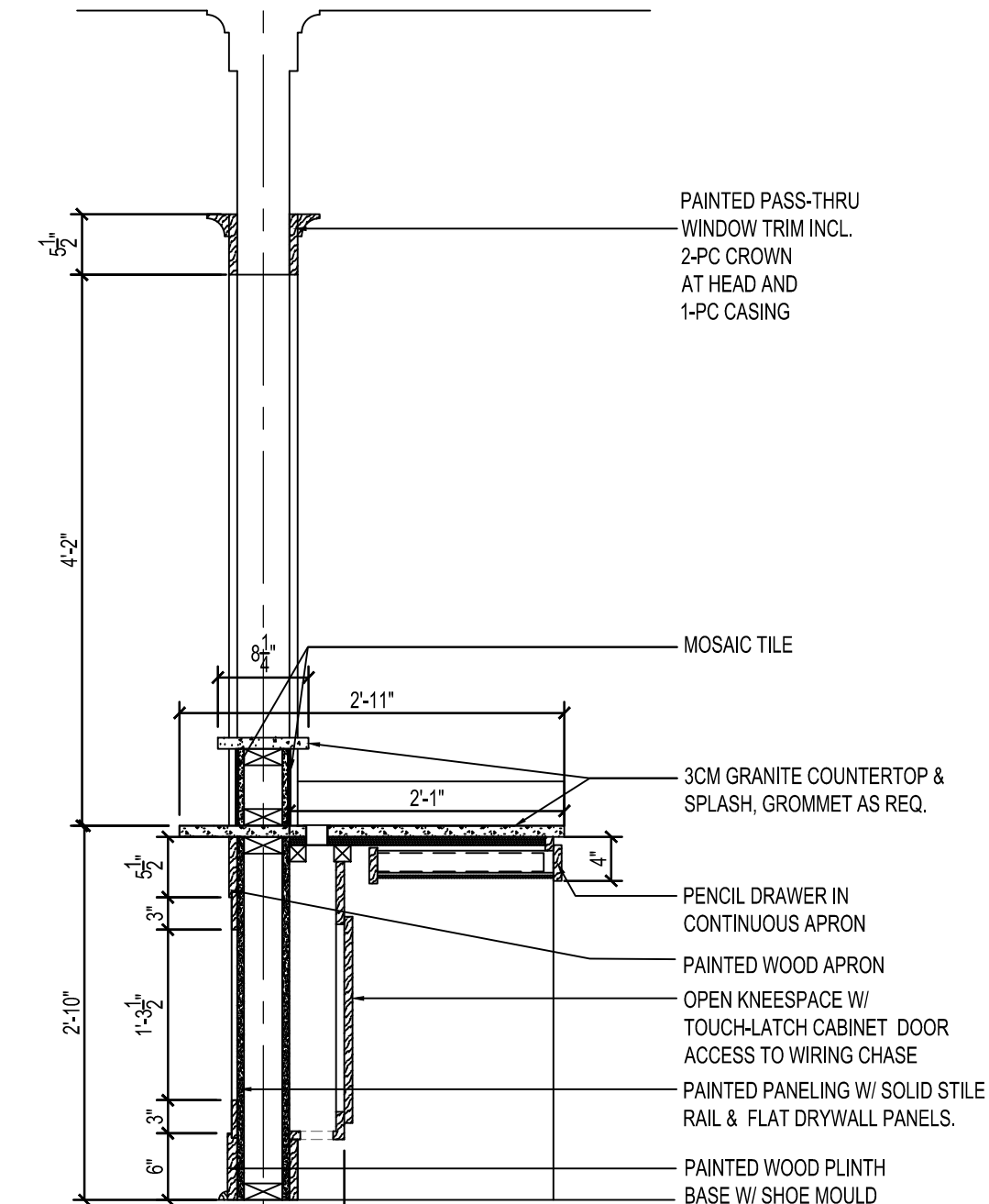
4 SECTION AT COFFEE BAR COUNTER  
SCALE: 3/4" = 1'-0"



3 SECTION AT COFFEE BAR PASS THROUGH  
SCALE: 3/4" = 1'-0"



2 SECTION AT RECEPTION SNACK CABINET  
SCALE: 3/4" = 1'-0"



1 SECTION AT RECEPTION PASS THROUGH  
SCALE: 3/4" = 1'-0"

CONSULTANT

SEAL

ARCHITECT

FOLEY DESIGN  
21 Puritan Mill | 350 Lowery Blvd. NW | Atlanta, Georgia 30318 | (404) 763-1299

ADDRESS

PRUITTHEALTH  
CRYSTAL COAST

Sea Level, South Carolina

NO.	DATE	DESCRIPTION
1	12/8/22	REVISION
2	01/16/23	REVISION
3	-/-/-	-
4	-/-/-	-
5	-/-/-	-
6	-/-/-	-

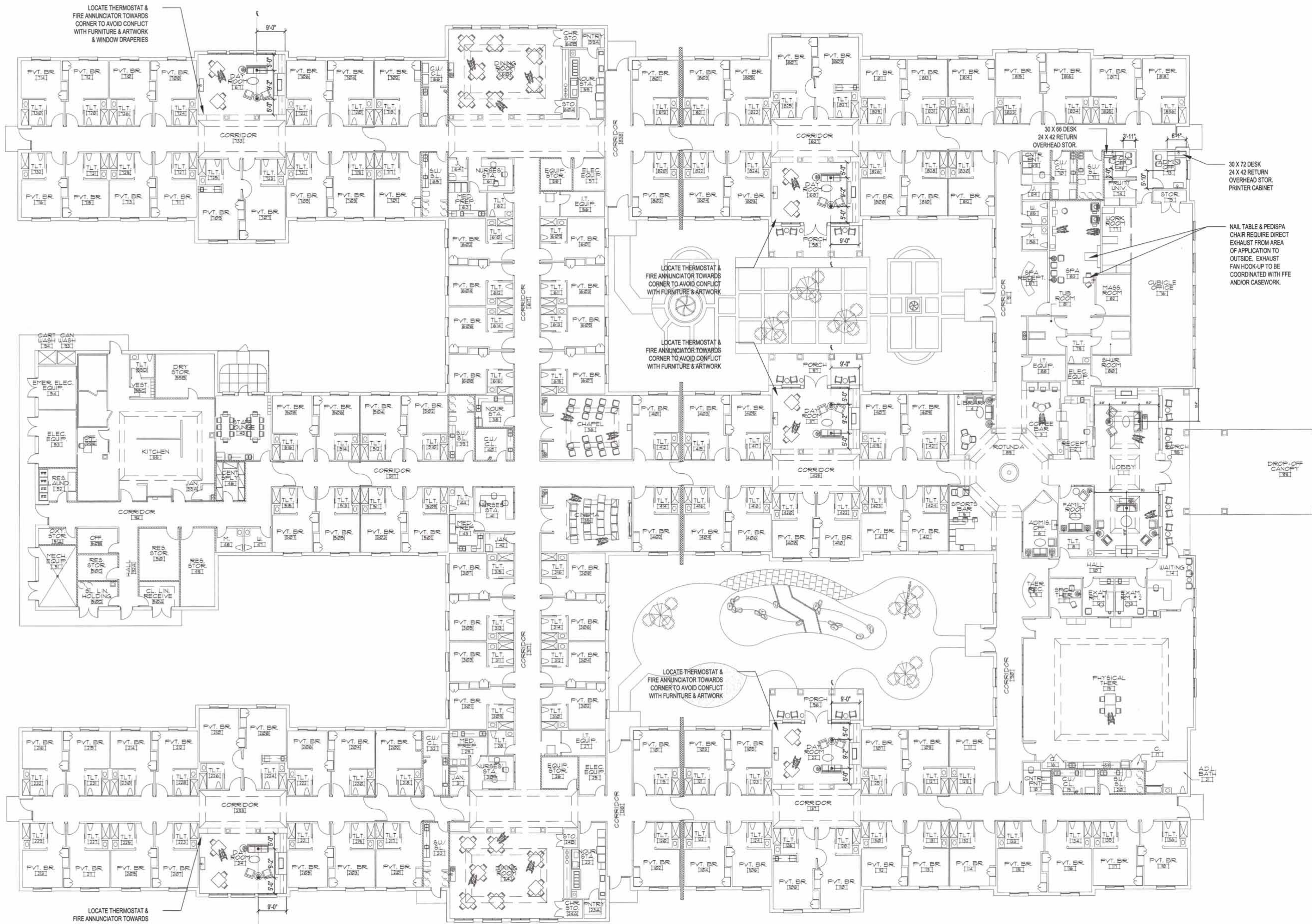
Sheet Title:

SECTIONS &  
DETAILS

Date: 09/29/2021  
Project No.: 202115

ID3.3





- NOTES:
1. SEE MARK-UP FOR SPECIFIC POWER LOCATIONS TO SUPPORT LAMPS AND OFFICE EQUIPMENT.
  2. LOCATE THERMOSTATS AND FIRE ANNUNCIATORS AWAY FROM WALL CENTER IF POSSIBLE TO AVOID CONFLICT WITH FURNITURE AND ARTWORK.
  3. AVOID LOCATING DEVICES BETWEEN ADJACENT WINDOWS TO AVOID CONFLICT WITH DRAPERIES

1 FURNITURE & FLOOR POWER PLAN  
SCALE: 1/16" = 1'-0"

CONSULTANT

SEAL

ARCHITECT

FOLEY DESIGN

21 Puritan Mill | 950 Lowery Blvd. NW | Atlanta, Georgia 30318 | (404) 761-1299

ADDRESS

PRUITTHEALTH  
CRYSTAL COAST

Sea Level, North Carolina

NO.	DATE	DESCRIPTION
1	-/-/-	
2	-/-/-	
3	-/-/-	
4	-/-/-	
5	-/-/-	
6	-/-/-	

Sheet Title:  
FURNITURE &  
FLOOR POWER  
PLAN

Date: 2/22/2021  
Project No.: 202115

ID4.0