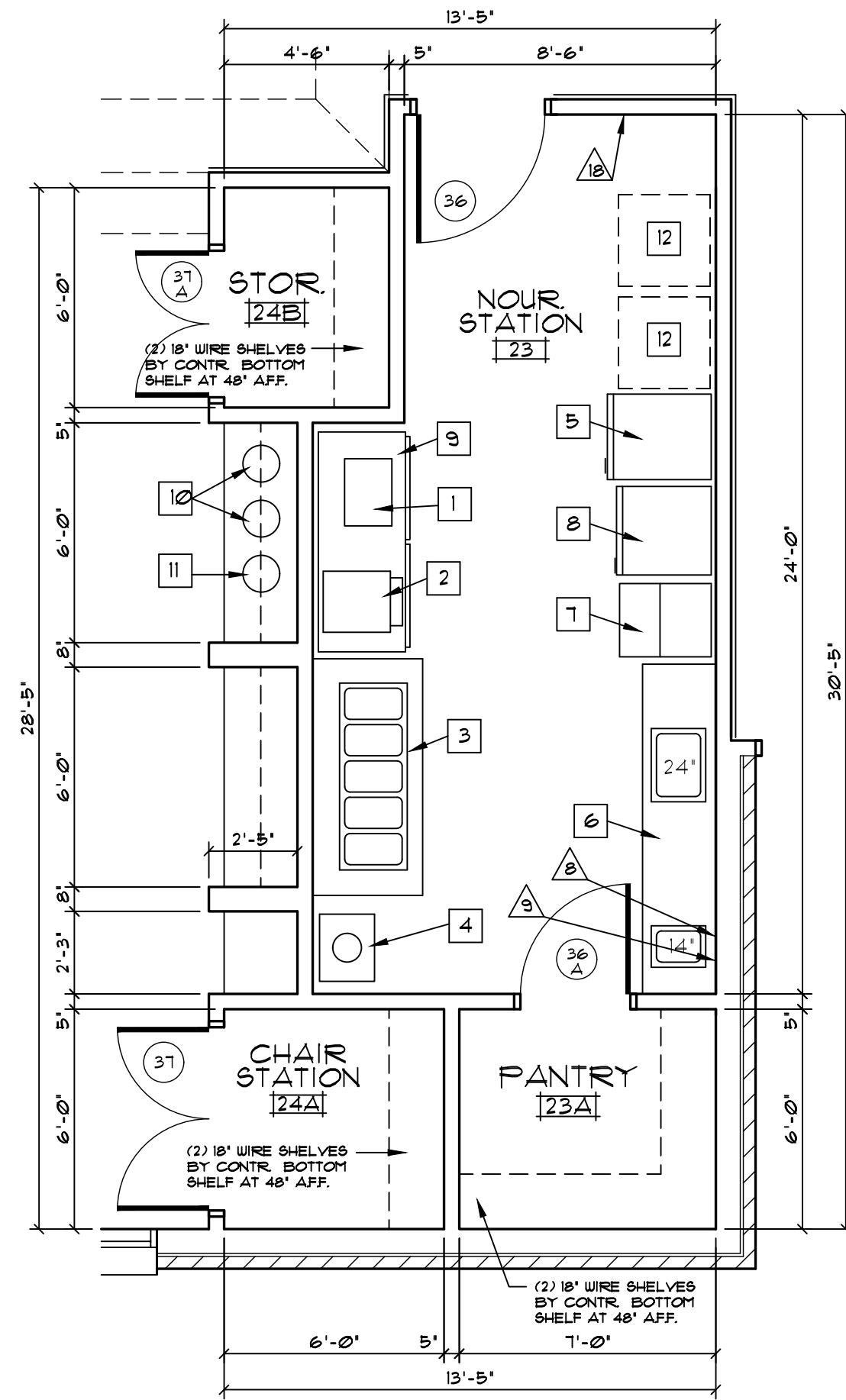
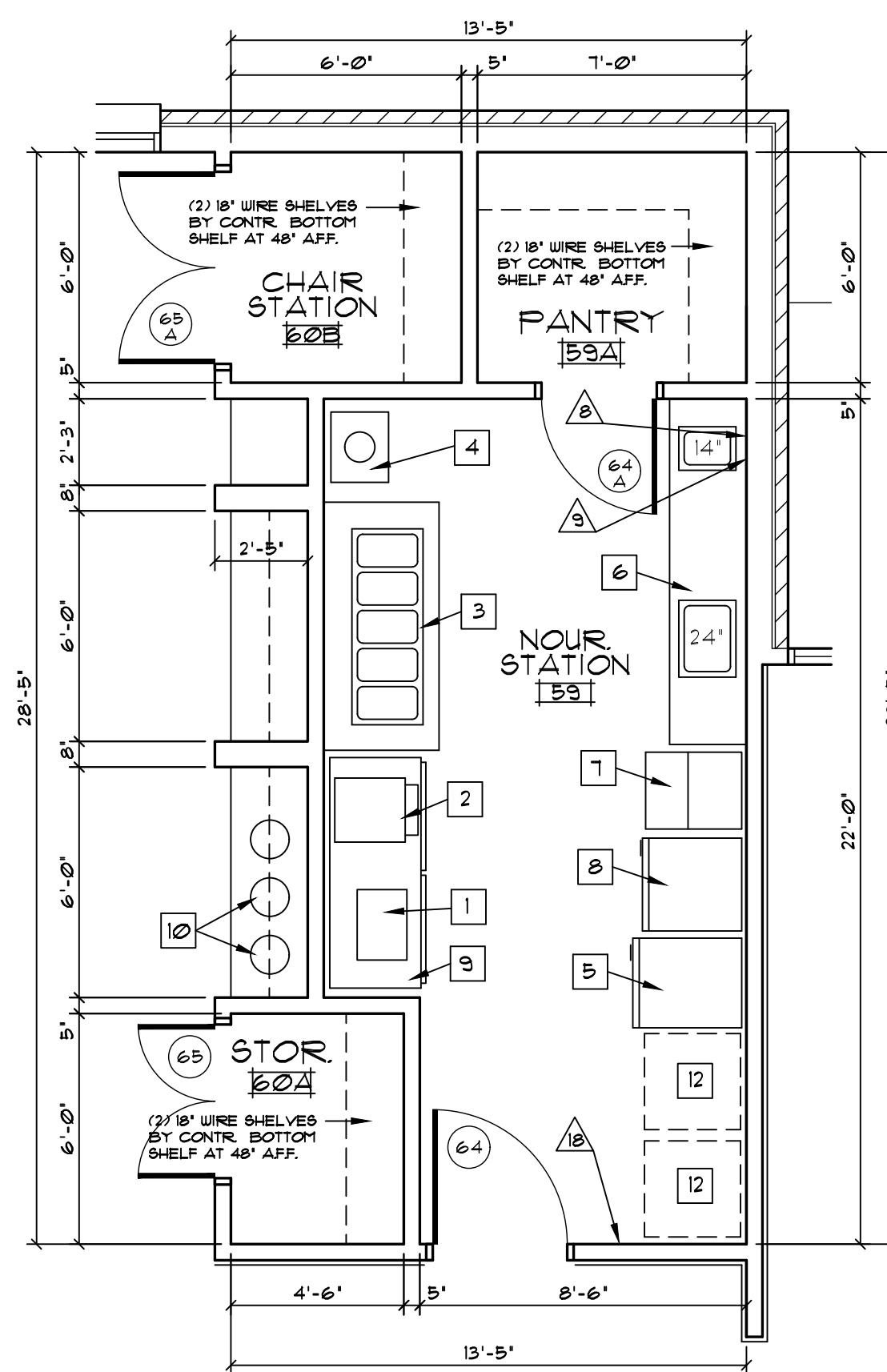


NOTE: SEE INTERIOR DESIGNER DRAWING FOR MILLWORK ELEVATIONS AT ALL DINING ROOMS (ADJACENT TO NOURISHMENT STATIONS).



1001 FLOOR PLAN NOUR. STATION # 23
SCALE: 1/4" = 1'-0"



1002 FLOOR PLAN NOUR. STATION # 59
SCALE: 1/4" = 1'-0"

NOURISHMENT STATION EQUIPMENT				
NO.	DESCRIPTION	MANUF.	MODEL NO.	QTY.
1	DOUBLE PANINI GRILL	BY OWNER		1
2	TOASTER - CONVEYOR TYPE	BY OWNER		1
3	HOT FOOD TABLE W/ LOWER SHELF	ADVANCE TABCO	5U-5E-240-B5	1
4	MOBILE DISH LAUNDRY (SINGLE)	LAKESIDE	610	1
5	REFRIGERATOR / FREEZER	TRUE	STG1DT-246	1
6	S.S. TABLE W/ SINKS (10'-0" L. X 2'-0" D)	JOHN BOOS & CO.	ST6R5-24120 9BK	1
7	ICE MAKER W/ BIN (FLAKE ICE)	SCOTSMAN	CJ3030SA-1	1
8	HOLDING CABINET	FUJE.	ETC-UA-6PH	1
9	REFRIG. - COUNTER HEIGHT	TRUE	TUT-6T-HC	1
10	COFFEE URN	BY OWNER		2
11	TEA URN	BY OWNER		1
12	FOOD CART	BY OWNER		2

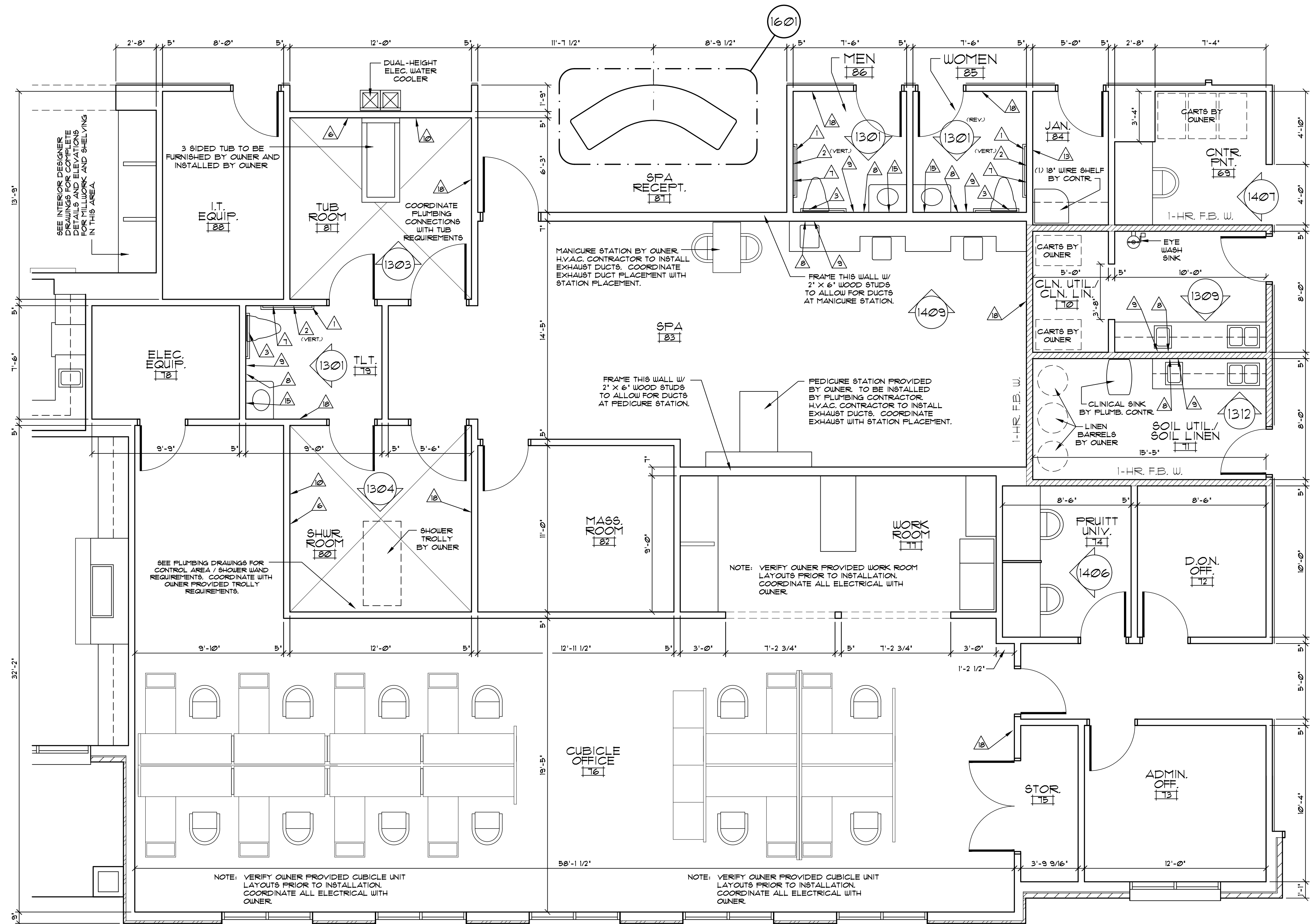
NOUR. STATION NOTES:

- GENERAL CONTRACTOR SHALL PURCHASE AND INSTALL FOOD SERVICE EQUIPMENT ITEMS # 3, # 4, # 5, # 6, # 7, # 8, AND # 9
- GENERAL CONTRACTOR SHALL SUBMIT EQUIPMENT CUT SHEETS TO THE OWNER FOR OWNER APPROVAL PRIOR TO PURCHASING ANY PIECE OF EQUIPMENT.
- ALL EQUIPMENT TO BE NEW AND HAVE NSF AND UL APPROVALS
- CONTRACTOR TO COORDINATE AND PROVIDE ALL NECESSARY PLUMBING AND ELECTRICAL CONNECTIONS REQUIRED FOR EACH PIECE OF EQUIPMENT.
- KITCHEN EQUIPMENT FOR THE TWO NOURISHMENT STATIONS (DETAILS # 1001 AND # 1002) TO BE FURNISHED / INSTALLED AS PART OF THE KITCHEN EQUIPMENT ALLOWANCE.

TOILET ACCESSORIES SCHEDULE							
NO.	DESCRIPTION	MANUF.	CATALOG NO.	NO.	DESCRIPTION	MANUF.	CATALOG NO.
1	GRAB BAR- 1 1/2' X 42' LONG	BOBRICK	B- 6806 x 42'	12	PRIVACY CURTAIN TRACK	ARNCO	1200
2	GRAB BAR- 1 1/2' X 24' LONG	BOBRICK	B- 6806 x 24'	13	MOP HOOK RACK	BY OWNER	
3	GRAB BAR- 1 1/2' X 36' LONG	BOBRICK	B- 6806 x 36'	14	SHOWER SEAT	SEACHROME	66R-260225 (NW)
4	GRAB BAR- 1 1/2' X 12' LONG	BOBRICK	B- 6806 x 12'	15	MIRROR - 23 1/2' X 31 1/2'	GATCO	43399 SATIN NICKEL FINISH
5	GRAB BAR- 1 1/2' X 48' LONG	NOT USED	NOT USED	16	TUB SEAT	BY OWNER	
6	TOUPEL BAR- 24' LONG	MOEN	DN6824BN	17	SHOWER SEAT	SEACHROME	66R-320225 (NW)
7	TOILET PAPER DISPENSER	MOEN	DN6808BN	18	HAND SANITIZER DISP.	BY OWNER	INSTALL BY G.C.
8	SOAP DISPENSER- WALL MNTED.	BY OWNER	INSTALL BY G.C.				
9	PAPER TOWEL DISPENSER	BY OWNER	INSTALL BY G.C.				
10	ROBE HOOK	MOEN	DN6803BN				
11	SHOWER CURTAIN ROD	BOBRICK	B- 610T				

TOILET ACCESSORY NOTES:

- SEE 1/4" SCALE FLOORPLANS AND INTERIOR ELEVATION FOR LOCATION OF TOILET ACCESSORIES.
- G.C. SHALL PROVIDE CONCEALED BLOCKING IN WALLS AND ABOVE CEILING AS REQUIRED FOR SECURE MOUNTING OF ACCESSORIES.
- PROVIDE MOP HOOK RACKS IN ALL JANITOR'S CLOSETS.
- MOUNTING HEIGHTS SHALL MEET HANDICAPPED REQUIREMENTS AND STATE BUILDING CODES.
- TOILET ACCESSORY ITEMS # 8, # 9, AND # 18 ARE TO BE PROVIDED BY OWNER AND INSTALLED BY G.C.
- TOILET ACCESSORIES # 6, # 7, # 10, AND # 15 ARE TO BE PER LISTED MANUFACTURER CATALOG NUMBER AND FINISH. NO SUBSTITUTIONS ACCEPTED.
- MODEL NUMBERS SHOWN FOR THE SHOWER UNITS ARE FOR THE RIGHT HAND MODEL UNITS. LEFT HAND UNITS ARE THE SAME NUMBER BUT HAS A (L) INSTEAD OF THE (R). SEE PLANS FOR HAND.



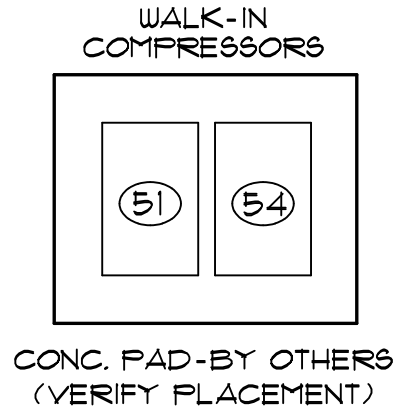
1003 FLOOR PLAN SPA SUITE / OFFICE SUITE AREA
SCALE: 1/4" = 1'-0"

KITCHEN EQUIPMENT

NO.	DESCRIPTION	QTY.
1	FIRE EXTINGUISHER (TYPE 'K')	3
2	HAND SINK	3
3	EYE WASH SINK	1
4	48" FLY FAN (AIR CURTAIN)	1
5	MOBILE POT & PAN SHELVE	1-LOT
6	SINGLE REACH-IN REFRIG.	1
7	MOBILE MIXER STAND	1
8	20 QUART MIXER	1
9	MOBILE SLICER STAND	1
10	SLICER	1
11	FOOD PROCESSOR	1
12	VEG. PREP. TABLE W/ SINKS	1
13	MIXING FAUCET	1
14	WALL SHELF	1
15	ICE MACHINE W/ BIN	1
16	8GL. DECK CONVECTION OVEN	1
17	FRYERS W/ FILTERS	1
18	SPREADER TABLE	1
19	2-COMPARTMENT STEAMER	1
20	NOT USED	N/A
21	S.S. WORK TABLE	1
22	EXHAUST HOOD SYSTEM	1
23	FIRE PROTECTION SYSTEM	1
24	S.S. WORK TABLE	1
25	6 BURN. RANGE W/ GRIDDLE & DBL. OVEN	1
26	TILT SKILLET	1
27	FLOOR TROUGH	1
28	EXHAUST HOOD SYSTEM	1
29	FIRE PROTECTION SYSTEM	1
30	6' STAINLESS STEEL GUARD	1
31	S.S. PREP TABLE W/ DRAWERS	1
32	DBL. SHELVE ABOVE REF. UNIT	1
33	COUNTER-HEIGHT REFRIG. UNIT	1
34	HOT FOOD TABLE	1
35	NOT USED	N/A
36	WORK TABLE W/ SINK	1
37	COFFEE BREWER BY VENDOR	3
38	COFFEE GRINDER BY VENDOR	1
39	NOT USED	N/A
40	NOT USED	N/A
41	NOT USED	N/A
42	WORK TABLE W/ DRAIN BRD. TOP	1
43	TEA BREWER BY VENDOR	1
44	TEA DISP. BY VENDOR	1
45	4'-0" L X 30" W X 34" H S.S. TABLE	2
46	FOOD TRANSPORT CARTS	4
47	MOBILE HEATED CABINET	1
48	DRY STORAGE SHELVE	1-LOT
49	WALK-IN COOLER	1
50	COOLER BLOWING COIL	1
51	COOLER CONDENSING UNIT	1
52	WALK-IN FREEZER	1
53	FREEZER BLOWING COIL	1
54	FREEZER CONDENSING UNIT	1
55	WALK-IN SHELVE	1-LOT
56	SOILED DISH TABLE	1
57	SLOPED RACK SHELF	1
58	PRE-RINSE SPRAY	1
59	DISPOSAL W/ CONTROL PANEL	1
60	CONDENSATE HOOD SYSTEM	1
61	DISH-WASHER CONVEYER	1
62	CLEAN DISH TABLE	1
63	BOOSTER HEATER	1
64	MIXING FAUCET	1
65	PRE-RINSE SPRAY W/ ADD-A-FAUCET	1
66	NOT USED	N/A
67	POT AND PAN SINK (3-COMP.)	1
68	SOAP & CHEMICAL SHELVE (JAN.)	1
69	MOP SINK	1
70	SERVICE FAUCET	1
71	MOP RACK/SHELF	1
72	UTILITY CART	3
73	LOCKERS @ VESTIBULE	6

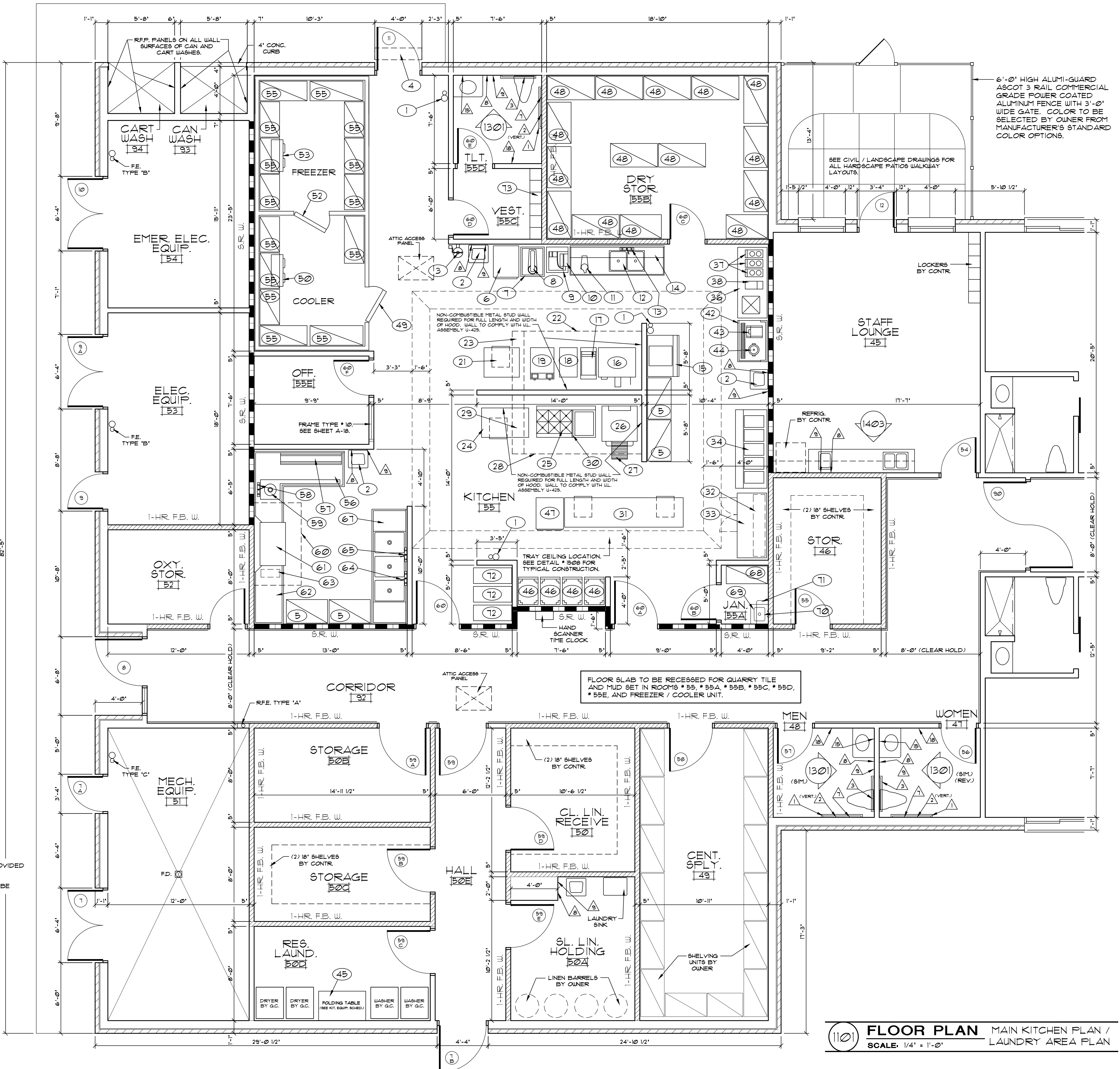
- NOTES:**
1. WALL SURFACE FROM BOTTOM OF HOOD TO TOP OF FLOOR BASE FOR LENGTH OF COOKING HOOD TO BE COVERED W/ STAINLESS STEEL PANELS.
 2. ALL PIECES OF KITCHEN EQUIPMENT TO HAVE A NSF LABEL AND BE INSTALLED IN ACCORDANCE WITH CURRENT NSF STANDARDS.
 3. ALL ELECTRICAL EQUIPMENT TO HAVE A UL LABEL.
 4. ALL GAS EQUIPMENT TO HAVE A GAS LABEL.
 5. THE KITCHEN EXHAUST HOOD SHALL BE FACTORY FABRICATED FOR COMPLIANCE WITH NFPA 96, NSF 1362 AND HAVE A UL LABEL. SEE DETAIL # 3201 ON SHEET A-32 FOR CROSS-SECTION OF HOOD INSTALLATION PLUS REQUIRED FIRE PROTECTION AND CLEARANCES OF DUCT SHAFTS.
 6. THE FIRE SUPPRESSION SYSTEM SHALL BE AN ANSUL MODEL R-102 SYSTEM. A READILY ACCESSIBLE MEANS TO MANUALLY ACTIVATE THE FIRE EXTINGUISHING EQUIPMENT SHALL BE PROVIDED IN A PATH OF EGRESS AND SHALL BE CLEARLY IDENTIFIED. THE OPERATION OF THE ANSUL SYSTEM SHALL AUTOMATICALLY SHUT OFF ALL SOURCES OF FUEL AND HEAT TO ALL EQUIPMENT UNDER THE KITCHEN EXHAUST HOOD AND ALSO AUTOMATICALLY ACTIVATE THE BUILDING FIRE ALARM SYSTEM.
 7. THE DISHWASHER CONDENSATE HOOD SHALL BE FACTORY FABRICATED AND HAVE BOTH A UL LABEL AND NSF LABEL. SEE DETAIL # 3202 FOR CROSS-SECTION OF HOOD INSTALLATION PLUS REQUIRED FIRE PROTECTION AND CLEARANCES OF DUCT SHAFTS.
 8. VERIFY ALL KITCHEN EQUIPMENT WITH OWNER PRIOR TO INSTALLATION.

- NOTES:**
1. KITCHEN EXHAUST HOODS (# 22, # 23, # 28, AND # 29) AND DISHWASHER HOOD (# 60) ARE PART OF THE CONTRACT AND NOT PART OF THE KITCHEN EQUIPMENT ALLOWANCE.
 2. KITCHEN EQUIPMENT FOR THE TWO NOURISHMENT STATIONS (DETAILS # 1001 AND # 1002) TO BE FURNISHED / INSTALLED AS PART OF THE KITCHEN EQUIPMENT ALLOWANCE.
 3. WALK-IN COOLER (# 49, # 50, AND # 51) AND FREEZER (# 52, # 53, AND # 54) TO BE FURNISHED AND INSTALLED AS PART OF THE KITCHEN EQUIPMENT ALLOWANCE. CLEAR INSIDE HEIGHT OF COOLER / FREEZER TO BE 8'-0". KITCHEN QUARRY TILE FLOOR TO EXTEND INTO BOTH THE COOLER AND FREEZER UNITS.



(AT LAUNDRY)

- EQUIPMENT NOTES:**
1. DISHWASHER TO BE LEASED / PROVIDED BY OWNER
 2. ITEMS # 43, # 44, # 31, AND # 38 TO BE PROVIDED BY OWNER



1101 FLOOR PLAN MAIN KITCHEN PLAN / LAUNDRY AREA PLAN
SCALE: 1/4" = 1'-0"

**PRUITTHEALTH
CRYSTAL COAST**
Beaufort, North Carolina

David R. Polston - Architect
3806 Park Ave. Suite 2-L, Wilmington, NC 28403
Architecture Planning Design

**104 BED
NURSING FACILITY**

**A
11**

KITCHEN SCHEDULE
PRUITT HEALTHCARE CRYSTAL COAST

7/12/2021

ItemNo	Qty	Category	MFR	Model
K1	3	Type "k"	NIC	Fire Extinguisher
K2	3	HAND SINK	JOHN BOOS	PBHS-W-1410-SSLR-X
K3	1	EYE WASH ATTACHMENT	T&S BRASS	EW-7360b
K4	1	AIR CURTAIN	BERNER	SHD07-1048A
K5	4	PLASTIC SHELVING UNIT	CAMBRO	EMU244278V5580
K6	1	REACH IN REFRIGERATOR	TRUE MGF-GNERAL FOOD SERVICE	STG1R-1S-HC
K7	1	EQUIPMENT STAND FOR MIXER/SLICER	JOHN BOOS	MS4-2403SSK-X
K8	1	PLANETARY MIXER	GLOBE	SP20
K9	1	EQUIPMENT STAND FOR MIXER/SLICER	JOHN BOOS	MS4--2424SSK-X
K10	1	FOOD SLICER, ELECTRIC	GLOVE	GC512
K11	1	BLIXER	ROBERT COUPE	BLIXER3
K12-13	1	WORK TABLE, 96", SS TOP	JOHN BOOS	ST6R5-3096SSK
	1		T&S BRASS	B-0226-CC
K14	1	SHELVING WALL MOUNTED	JOHN BOOS	BHS1296-X
K15	1	ICE MAKER- CUBE STYLE	SCOTSMAN	C0522MA-1
K16	1	CONVECTION OVEN, GAS	SOUTHBEND	SLGS/22SC
K17	1	GAS FLOOR FRYER	VULCAN	LG300
K18	1	WORK TABLE, 18" SS TOP	JOHN BOOS	EFT8-3018SSK-X
K19	1	CONVECTION STEAMER, GAS	CLEVELAND	24CGA10
K20		SPARE NUMBER		
K21	1	WORK TABLE 36" SS TOP	JOHN BOOS	ST6-3036SSK-X
K22-23	1	KITCHEN VENTILATION	CAPTIVE-AIRE	HOOD SYSTEM
K24	1	WORK TABLE, 48" SS TOP	JOHN BOOS	ST6-3048SSK-X
K25	1	RANGE 60" 6 BURNER 24" GRIDDLE	SOUTHBEND	S60DD-2TL
K26	1	TILTING SKILLET BRAISING PAN GAS	GROEN	BPM-15GC
K27	1	FLOOR TROUGH	ADVANCE TABCO	FTG-2436
K28-29	1	KITCHEN VENTILATION BACK HOOD	CAPTIVE-AIRE	INCLUDED IN ITEM 22
K30	1	ACCESSORY	TITAN	SGE-3072
K31	1	WORK TABLE 120" SS TOP	JOHN BOOS	ST4-30120SBK
K32-33	1	REFRIGERATED WORK TOP	TRUE MGF-GNERAL FOOD SERVICE	TWT-67-HC
K34	1	HOT FOOD SERVING COUNTER/TABLE	ADVANCE TABCO	SW-5E-240-BS
K35		SPARE NUMBER		
K36	1	WORK TABLE 72" SS TOP	JOHN BOOS	ST6R5-3072SSK
	1		T&S BRASS	B-0231
K37-38	1	COFFEE EQUIPMENT	NIC	BY VENDOR
K39-41		SPARE NUMBER		
K42	1	WORK TABLE 48" SS TOP	JOHN BOOS	ST6R5-3048SSK
K43-44	1	ICED TEA EQUIPMENT	NIC	BY VENDOR
K45	2	WORK TABLE 60" SS TOP	JOHN BOOS	ST6R5-3060SBK-X
K46	4	MEAL TRAY DELIVERY CART	NIC	541
K47	1	HEATED HOLDING PROOFING CABINET, MOBILE, HALF HEIGHT	FEW	ETC-UA-6PH
K48	6	PLASTIC SHELVING UNIT	CAMBRO	ESU244284V5580
K49-54	1	WALK IN COOLER FREEZER COMBO	KOLPAK	CUSTOM
K55	6	PLASTIC SHELVING UNIT	CAMBRO	FREEZER
K56	1	SOILED DISHTABLE	TITAN	90X72SDT-R-CS-14
K57	1	RACK SHELF	TITAN	63VVMRS
K58	1	PRE-RINSE FAUCET ASSEMBLY	T&S BRASS	B-0133
K59	1	DISPOSER	INSINKERATOR	SS-200-18A-CC202
K60	1	CONDENSATE HOOD	CAPTIVE-AIRE	CUSTOM
K61	1	DISHWASHER CONVEYOR TYPE	NIC	LEASE
K62	1	CLEAN DISHTABLE	TITAN	5CDT-L-14
K63	1	BOOSTER HEATER	NIC	LEASE
K64-65	1	WALL/SPLASH MOUNT FAUCET	T&S BRASS	B-0231
	1		T&S BRASS	B-0133-ADF12-B
K66		SPARE NUMBER		
K67	1	THREE (3) COMPARTMENT SINK	TITAN	3C2028-2D24-14
K68	1	PLASTIC SHELVING UNIT	CAMBRO	ESU184284V5580
K69-70	1	MOP SINK	JOHN BOOS	PBMS2016-12-X
	1		T&S BRASS	B-0665-BSTP
K71	1	SHELVING WALL MOUNTED	JOHN BOOS	PB-MSS824
K72	3	BUSSING UTILITY TRANSPORT CART METAL	NIC	WRSC-1842-3SS
K73	6	LOCKER	OMCAN USA	13130
1N	2	PANNINI GRILL	NIC	BY OWNER
2N	2	CONVEYOR TOASTER	NIC	BY OWNER
3N	2	HOT FOOD SERVING COUNTER/TABLE	ADVANCE TABCO	SW-5E-240-BS
4N	2	MOBILE PLATE AND DISH DISPENSER	NIC	6110
5N	2	REACH IN DUAL TEMP CABINET	TRUE MGF-GNERAL FOOD SERVICE	STG1DT-2HS-HC
6N	2	WORK TABLE 120" SS TOP	JOHN BOOS	ST6R5-24120SBK
	4		T&S BRASS	B-0231
8N	2	ICE FLAKER WITH BIN	SCOTSMAN	UF424A-1
9N	2	HEATED HOLDING PROOFING CABINET, MOBILE, HALF HEIGHT	FEW	ETC-UA-6PH
10N	2	REFRIGERATED WORK TOP	TRUE MGF-GNERAL FOOD SERVICE	TWT-67-HC
11-13N	2	COFFE & TEA & CART	NIC	BY OWNER



SUPERIOR CLEANING, RELIABLE PERFORMANCE

ES-2000HT Dishmachine

- ▲ High temperature machine helps provide fast drying.
- ▲ Self-cleaning internal sump helps ensure a clean final rinse.
- ▲ Unique design helps ensure uncontaminated water is used in every cycle.

.....

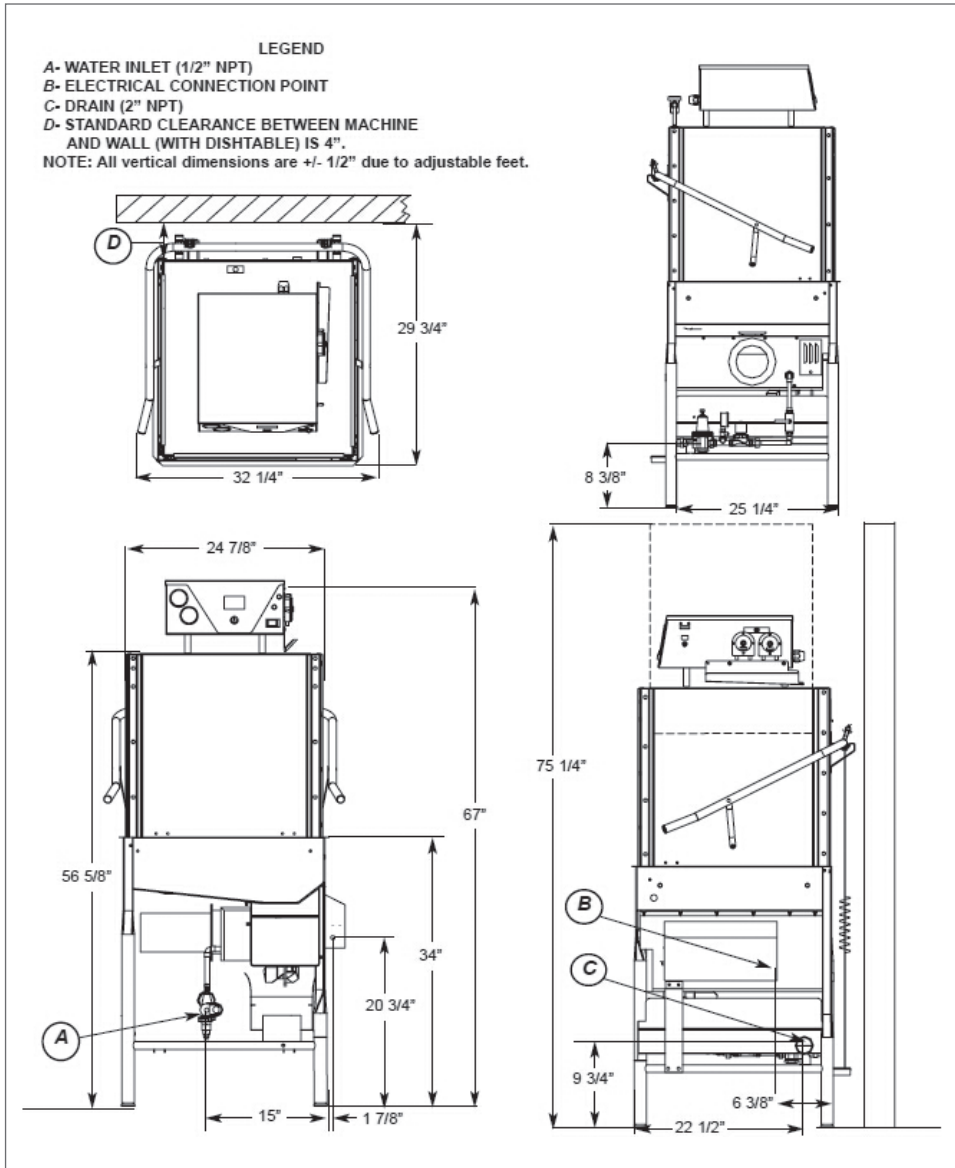
Renting a dishmachine from Ecolab allows you to focus on your business with the security of knowing your warewashing operation is properly managed.

.....



ECOLAB DISHMACHINE RENTAL PROGRAM

The highest level of clean backed by service you can trust.



ES-2000HT SPECIFICATIONS

OPERATING CAPACITY	
Racks per Hour	55
OPERATING CYCLE (NORMAL)	
Wash Time	41
Dwell Time	8
Rinse Time	11
Load Time	5
Total Cycle Time	65
OPERATING TEMPERATURES	
Wash (minimum)	150° F
Sanitizing Rinse (minimum)	180° F
WATER CONSUMPTION	
Gallons per Rack	1.25
ELECTRICAL RATINGS	
Wash Pump	3/4 hp
WASH CHAMBER	
Height	17"
WEIGHT	
Machine Weight	300 lbs
UTILITY REQUIREMENTS ELECTRICAL	
Voltage/Frequency/Phase: 208V/60Hz/1 Ph	
Total Amperage	75.2 A
Minimum Electrical Circuit	100 A
Voltage/Frequency/Phase: 230V/60Hz/1 Ph	
Total Amperage	68.8 A
Minimum Electrical Circuit	90 A
Voltage/Frequency/Phase: 208V/60Hz/3 Ph	
Total Amperage	46.8 A
Minimum Electrical Circuit	60 A
Voltage/Frequency/Phase: 230V/60Hz/3 Ph	
Total Amperage	43 A
Minimum Electrical Circuit	60 A
WATER	
Waterline Size (minimum)	1/2"
Flow Pressure (required)	15-25 psi
Incoming Temperature (min)	110° F
DRAIN	
Drainline Size (minimum)	2"
VENT HOOD	
Flow-Cubic Feet per Minute	400

Enhance Warewashing Results with a Managed Water Softening Program



- Water hardness over 7 grains per gallon significantly impacts warewashing results. Ecolab's POU water softener helps you achieve superior results at a lower operating cost
- Single point of accountability for improved results
- Worry-free renting includes installation and maintenance
- Compact cabinet design unit fits under most dish tables
- Uses less salt than conventional hot water softeners

Submittal Sheet

ITEM# K22-23 - KITCHEN VENTILATION (1 EA REQ'D)

Captive-Aire HOOD SYSTEM

Hood #1 - Hood Front - Job #4565214

6030ND-2 - 10ft 0" Long Exhaust-Only Wall Canopy Hood with Built-in 3" Back Standoff x1

- 430 SS Where Exposed x1

- Utility Cabinet on the Left Side 12.00" Width x 60.00" Length x 30.00" Height x1

- FILTER - 20" tall x 16" (19.625" by 15.625") wide Stainless Steel Captrate Solo filter with hook, ETL Listed. Particulate capture efficiency: 85% efficient at 9 microns, 76% efficient at 5 microns. Used on hoods shipped AFTER 7/27/17. x7

- Recessed Allanson Round LED fixture and LED Light, 3500 K warm output. x3

- EXHAUST RISER - Factory installed 14" Diameter X 4" Height x1

- 1/2 Pint Grease Cup New Style, Flanged Slotted x2

- BACKSPLASH 80.00" High X 133.00" Long 430 SS Vertical (Includes End Caps & Divider Bars) x1

- Face Mount 1st Switch x1

- RIGHT END STANDOFF 1" Wide 60" Long Insulated x1

- Electrical Package Installation in Utility Cabinet by Plant. x1

- RIGHT SIDESPLASH 80.00" High X 61.00" Long 430 SS Vertical (Includes End Caps & Divider Bars) x1

- BACK STANDOFF (FLAT) 1" Wide 133" Long x1

- LEFT QUARTER END PANEL 24" Top Width, 0" Bottom Width, 24" High 430 SS x1

- STRUCTURAL FRONT PANEL x1

- Parts required to mount riser sensor on riser with 3 inch insulation double wall duct. x1

<By Other>

ACCESSORIES

Mfr	Qty	Model	Spec
Captive-Aire	1	HOOD #2	Hood #2 - Hood Back - Job #4565214 6030ND-2 - 10ft 0" Long Exhaust-Only Wall Canopy Hood with Built-in 3" Back Standoff x1 - 430 SS Where Exposed x1 - Fire Cabinet on the Right Side 12.00" Width x 60.00" Length x 30.00" Height (Additional charges may apply for cabinet if not sold with fire system) x1 - FILTER - 20" tall x 16" (19.625" by 15.625") wide Stainless Steel Captrate Solo filter with hook, ETL Listed. Particulate capture efficiency: 85% efficient at 9 microns, 76% efficient at 5 microns. Used on hoods shipped AFTER 7/27/17. x7 - Recessed Allanson Round LED fixture and LED Light, 3500 K warm output. x3 - EXHAUST RISER - Factory installed 14" Diameter X 4" Height x1 - 1/2 Pint Grease Cup New Style, Flanged Slotted x2 - BACKSPLASH 80.00" High X 133.00" Long 430 SS Vertical (Includes End Caps & Divider Bars) x1 - LEFT END STANDOFF 1" Wide 60" Long Insulated x1 - LEFT SIDESPLASH 80.00" High X 61.00" Long 430 SS Vertical (Includes End Caps & Divider Bars) x1

Captive-Aire	1	HOOD #3	<ul style="list-style-type: none"> - BACK STANDOFF (FLAT) 1" Wide 133" Long x1 - RIGHT QUARTER END PANEL 24" Top Width, 0" Bottom Width, 24" High 430 SS x1 - STRUCTURAL FRONT PANEL x1 - Parts required to mount riser sensor on riser with 3 inch insulation double wall duct. x1 <p>Hood #3 - Hood Dishwasher - Job #4565214 4824VHB-G-ND - 7ft 0" Long Condensate Hood, w/ Full Perimeter Gutter, w/ND Style Front. x1</p> <ul style="list-style-type: none"> - 430 SS - 100% Application x1 - EXHAUST RISER - Factory installed 10" Diameter X 4" Height x1 - FIELD WRAPPER 6.00" High Front, Left, Right x1
Captive-Aire	1	FIRE SYSTEM	<p>Fire System #1 - Job #4565214 ANSUL-3.0/3.0-MANIFOLD Ansul 6 gallon Manifoldd Fire System in Utility Cabinet (includes pre-piped hood(s) with detection, tank(s), release mechanism, microswitches and pull station). Includes piping for hoods: 1, 2. x1</p> <ul style="list-style-type: none"> - MGVA2 GAS VALVE - 2" Mechanical Shutoff Valve (Ansul)(28-55610) - Includes Upstream Strainer assembly x1
Captive-Aire	1	EXHAUST FAN	<p>Fan #1 DU180HFA - Exhaust Fan (EF-1) - Job #4565214 DU180HFA High Speed Direct Drive Centrifugal Upblast Exhaust Fan with, disconnect switch and 18-3/4" wheel. Exhaust Fan handles 2000 CFM @ -1.500" wc ESP, Fan runs at 1201 RPM. Exhaust Motor: 1.500 HP, 3 Phs, 208 V, 60Hz, 4.4 FLA, ODP, Premium (E-Plus3) Eff. x1</p> <ul style="list-style-type: none"> - Grease Cup for kitchen-duty centrifugal exhaust fans, Box Dimensions 17-1/8 L X 5-1/16 W X 3-3/4 H (20 GA.) (Includes Down Spout) x1 - Gasketing - Thermeez Woven Ceramic Tape - 1/4" x 1" with adhesive back - Max Temp 1500°F. To be applied between fan base and grease duct. Installed under fan base 1/2" from the inside edge of the base to match up with the curb top flanges. x1 - EF-1-verify pitch Curb CRB26.5x20E On Fan #1 2.000:12.000 Pitch x1 - Hinged Base for Curb. Standard Hinge attached to curb. Used on Fans with wheels 20 inches or smaller. 12 GA Galvanized. x1 - Vented Base for Curb x1 - Full Bottom Curb Corner. Base flange corners fully welded or staked by factory. x1
Captive-Aire	1	EXHAUST FAN#2	<p>Fan #2 DU180HFA - Exhaust Fan (EF-2) - Job #4565214 DU180HFA High Speed Direct Drive Centrifugal Upblast Exhaust Fan with, disconnect switch and 18-3/4" wheel. Exhaust Fan handles 2000 CFM @ -1.500" wc ESP, Fan runs at 1201 RPM. Exhaust Motor: 1.500 HP, 3 Phs, 208 V, 60Hz, 4.4 FLA, ODP, Premium (E-Plus3) Eff. x1</p> <ul style="list-style-type: none"> - Grease Cup for kitchen-duty centrifugal exhaust fans, Box Dimensions 17-1/8 L X 5-1/16 W X 3-3/4 H (20 GA.) (Includes Down Spout) x1

				<ul style="list-style-type: none"> - Gasketing - Thermeez Woven Ceramic Tape - 1/4" x 1" with adhesive back - Max Temp 1500°F. To be applied between fan base and grease duct. Installed under fan base 1/2" from the inside edge of the base to match up with the curb top flanges. x1 - EF-2 verify pitch Curb CRB26.5x20E On Fan #2 2.000:12.000 Pitch x1 - Hinged Base for Curb. Standard Hinge attached to curb. Used on Fans with wheels 20 inches or smaller. 12 GA Galvanized. x1 - Vented Base for Curb x1 - Full Bottom Curb Corner. Base flange corners fully welded or staked by factory. x1
Captive-Aire	1	EXHAUST FAN #3		<p>Fan #3 DU50HFA - Exhaust Fan (EF-3) - Job #4565214</p> <p>DU50HFA High Speed Direct Drive Centrifugal Upblast Exhaust Fan with speed control (speed control included for single phase only), disconnect switch and 13-3/4" wheel. Exhaust Fan handles 875 CFM @ -0.500" wc ESP, Fan runs at 1141 RPM.</p> <p>Exhaust Motor: 0.500 HP, 1 Phs, 208 V, 60Hz, 3.8 FLA, TEAO-ECM (Totally Enclosed Air Over Electronically Commutated Motor) x1</p> <ul style="list-style-type: none"> - ECM Wiring Package and Manual or 0-10VDC Control for Exhasut EC motors. MSC Controller. **DO NOT ORDER UNDER WARRANTY, SEE PART NUMBER "CAS MSC**. - EF-3 verify pitch Curb CRB19.5X20E On Fan #3 2.000:12.000 Pitch x1 - Hinged Base for Curb. Standard Hinge attached to curb. Used on Fans with wheels 20 inches or smaller. 12 GA Galvanized. x1 - Vented Base for Curb x1 - Full Bottom Curb Corner. Base flange corners fully welded or staked by factory. x1
Captive-Aire	1	SUPPLY FAN		<p>Fan #4 CASRTU4-I.300-20-30T-DOAS - Heater (Paragon DOAS) - Job #4565214</p> <p>CASRTU4-I.300-20-30T-DOAS RTU with Indirect Fired Heat and 20" Direct Drive Plenum Fan, 1 Furnace, Electronic Full Modulation, Constant 80% Efficiency, and 6:1 Max Turndown for NG, (5:1 Max Turndown for LP). Stainless Steel Burner and Heat Exchanger. Variable Speed Cooling. Supply Fan handles 4875 CFM @ 0.500" wc ESP, Fan runs at 1282 RPM. Heater supplies 177002 BTUs. 32°F Temperature Rise. [Fuel: Natural Gas] Input: 221252 BTUs. Supply Motor: 5.000 HP, 3 Phase, 208 V, 60Hz, 15.0 FLA, ODP, Premium (E-Plus3) Eff. Side Discharge - Air Flow Left -> Right x1</p> <ul style="list-style-type: none"> - KITCHEN MUA/RTU • Occupied/Unoccupied Scheduling • Discharge/Space Temp Control • Heating and Cooling Activation Based On Intake/Space Set Point • Interlock/Auto Blower Mode • Smoke Detector Interlock • Space HMI Ships Loose x1 - Gas Manifold for RTU 4-1 GM - BTU 0 - 400000 - 7 in. w.c. - 14 in. w.c., No Insurance Requirement (ANSI), BV250-88 x1 - Single Point Electrical Connection for RTU. QNTY 1 750va Transformer Used. If a Non-DCV Prewire controls this unit, the #28, #47, "MA", or "E2"

Option Prewire must be selected. Do not provide supply starter in prewire. x1

- 2" Merv 13 Filters for Size 4 RTU.
- QTY 12, 20 x 20 x 2 Merv 13 Filters x1
- 2" Merv 8 Filters for Size 4 RTU.
- QTY 12, 20 x 20 x 2 Merv 8 Filters x1
- Overheat Stat factory set at 80°F and 10 minutes. Prevents unit from overheating the space when cooling. x1
- VFD factory mounted and wired in unit control vestibule. x1
- 30 Ton Modulating Cooling Option, 208/230V. R410A Refrigerant, Variable Speed Inverter Duty Compressor, ECM Condensing Fan(s). x1
- RTU Compressor Oil Sensor Factory Installed. x1
- RTU Fixed 100% Outdoor Air Intake. x1
- RTU Size 4 No Return x1
- Gas Pressure Gauge, 0-35", 2.5" Diameter, 1/4" Thread Size x1
- Gas Pressure Gauge, 0 to +10 Inches Wc., 2.5" Diameter, 1/8" Thread Size, Rear Thread x1
- Size 4 RTU Curb Duct Hanger - Adjustable Duct Hanger Support Brackets installed for both return and discharge duct. x1
- Occupied Scheduling Defaulted for IBT/RTU. x1
- Commercial Smoke Detector Interlock (Detector By Others) x1
- 30 Ton Cooling Only Modulating Reheat Option for Discharge Control x1
- Clogged Filter Switch with Notification on HMI x1
- VAV (Variable-Air-Volume) Wiring Package for Commercial Fans.
- Manual Speed Control Variable Frequency Drive Included x1
- ESV402N02TXB571 - Variable Frequency Drive - 5 HP Max., 200/240 V, Three Phase, 16.5 A Max., NEMA 1 Enclosure, with 2RJ-45 FOR MODBUS x1
- Ecoating for Size 4 RTU 30T Condenser Coil. x1
- Ecoating for Size 4 RTU 30T Evap Coil. x1
- Ecoating for Size 4 RTU 30T Reheat Coil. x1
- RTU Size 4 Hail Guard for outdoor coil. Includes magnets and washers for installation. x1
- RTU Size 4 Side Discharge x1
- VERIZON CELLULAR KIT, WIRED ANTENNA AND VERIZON DATA FOR 1 YEARS. USED WITH FAN. x1
- Paragon DOAS Curb CRB80X111X14INS Insulated On Fan #4 Flat Curb *** 16 Gauge Construction. x1
- Full Bottom Curb Corner. Base flange corners fully welded or staked by factory. x1

Captive-Aire

1

ELECTRICAL SYSTEM

Electrical System #1 - Job #4565214

DCV-2022 Demand Control Ventilation, w/ control for 2 Exhaust Fans, Exhaust on in Fire, Lights out in Fire, Fans modulate based on duct temperature. INVERTER DUTY 3 PHASE MOTOR REQUIRED FOR USE WITH VFD. Room temperature sensor shipped loose for field installation. Verify distance between VFD and Motor; additional cost could apply if distance exceeds 50 feet. Includes 2 Duct Thermostat kits. x1

- ESV112N02YXB571 - Variable Frequency Drive - 1-1/2 HP Max., 200/240 V, Single or Three Phase Input, 6.0 A Max., NEMA 1 Enclosure, with 2RJ-45 FOR MODBUS x1

				<ul style="list-style-type: none"> - ESV112N02YXB571 - Variable Frequency Drive - 1-1/2 HP Max., 200/240 V, Single or Three Phase Input, 6.0 A Max., NEMA 1 Enclosure, with 2RJ-45 FOR MODBUS x1 - VERIZON CELLULAR KIT, WIRED ANTENNA AND VERIZON DATA FOR 1 YEARS. x1 - Digital Prewire Lighting Relay Kit. Includes hood lighting relay & terminal blocks. Allows for up to 1400W of lighting each. x2 - CAT-5E CABLE - 25 Foot. x1
				Electrical System #2 - Hood 3 Sw - Job #4565214 1st Switch x1
Captive-Aire	1	DUCT RUN		<p>Duct Run #1 - Duct-Hood 1</p> <p>(P1) DW1427DWAJD-3Z-S Double Wall Adjustable Duct - 14" Inner Duct - 3 Layers Zero Clearance - 20" Stainless Steel Outer Shell. Min Length = 11" / Max Length = 24.5" / Adjustment = 13.5" / Adjustable Section May Need To Be Cut. Includes single and double wall "V" Clamps. x1</p> <p>(P2) DW1490DWASY-3Z-S Double Wall Duct - 14" Inner 90 Duct - 3 Layers Zero Clearance - 20" Stainless Steel Outer Shell. x1</p> <p>(P3) DW1402DWOFFSETASY-3Z-S Double Wall Duct - 14" Inner Duct Riser & 2 Degree Offset - 3 Layers Zero Clearance - 20" Stainless Steel Outer Shell. x1</p> <p>(P4) DW1423DWLT-3Z-S Double Wall Duct - 14" Inner Duct, 23" long - 3 Layers Zero Clearance - 20" Stainless Steel Outer Shell. x1</p> <p>(P5) DW1447DWAJD-3Z-S Double Wall Adjustable Duct - 14" Inner Duct - 3 Layers Zero Clearance - 20" Stainless Steel Outer Shell. Min Length = 11" / Max Length = 48.5" / Adjustment = 30.5" / Adjustable Section May Need To Be Cut. Includes single and double wall "V" Clamps. x1</p> <p>(P6) DW14DWTEASY-3Z-S Double Wall Duct - 14" Inner Tee Duct - 3 Layers Zero Clearance - 20" Stainless Steel Outer Shell. x1</p> <p>(P7) DW1447DWLT-3Z-S Double Wall Duct - 14" Inner Duct, 47" long - 3 Layers Zero Clearance - 20" Stainless Steel Outer Shell. x1</p> <p>(P8) DW1423DWLT-3Z-S Double Wall Duct - 14" Inner Duct, 23" long - 3 Layers Zero Clearance - 20" Stainless Steel Outer Shell. x1</p> <p>(P9) DW1447DWAJD-3Z-S Double Wall Adjustable Duct - 14" Inner Duct - 3 Layers Zero Clearance - 20" Stainless Steel Outer Shell. Min Length = 11" / Max Length = 48.5" / Adjustment = 30.5" / Adjustable Section May Need To Be Cut. Includes single and double wall "V" Clamps. x1</p> <p>(P10) DW1490DWASY-3Z-S Double Wall Duct - 14" Inner 90 Duct - 3 Layers Zero Clearance - 20" Stainless Steel Outer Shell. x1</p> <p>(P11) DW1423DWLT-3Z-S Double Wall Duct - 14" Inner Duct, 23" long - 3 Layers Zero Clearance - 20" Stainless Steel Outer Shell. x1</p> <p>(P12) DW1447DWAJD-3Z-S Double Wall Adjustable Duct - 14" Inner Duct - 3 Layers Zero Clearance - 20" Stainless Steel Outer Shell. Min Length = 11" / Max Length = 48.5" / Adjustment = 30.5" / Adjustable Section May Need To Be Cut. Includes single and double wall "V" Clamps. x1</p> <p>(P13) DW14DWTEASY-3Z-S Double Wall Duct - 14" Inner Tee Duct - 3 Layers Zero Clearance - 20"</p>

Stainless Steel Outer Shell. x1
(P14) DW14DWACCDORCOV-3Z-S Double Wall Duct - 14" Inner Access Door & 20" Access Door Cover With Clamps - 3 Layers Zero Clearance - 20" Stainless Steel Outer Shell. x1
(P15) DW1402DWOFFSETASY-3Z-S Double Wall Duct - 14" Inner Duct Riser & 2 Degree Offset - 3 Layers Zero Clearance - 20" Stainless Steel Outer Shell. x1
(P16) DW1423DWLT-3Z-S Double Wall Duct - 14" Inner Duct, 23" long - 3 Layers Zero Clearance - 20" Stainless Steel Outer Shell. x1
(P17) DW1447DWAJDTP-3Z-S Double Wall Adjustable Duct Transition Plate - 14" Inner Duct - 3 Layers Zero Clearance - 20" Stainless Steel Outer Shell. Min Length = 11" / Max Length = 48.5" / Adjustment = 30.5" / Adjustable Section May Need To Be Cut.

Includes single and double wall "V" Clamps. x1
(P18) DW2614TP Duct to Curb Transition, 26-1/2" Curb to 14" Duct, 16 GA Aluminized. Used on BDU18. x1
(P19) DW14DWACCDORCOV-3Z-S Double Wall Duct - 14" Inner Access Door & 20" Access Door Cover With Clamps - 3 Layers Zero Clearance - 20" Stainless Steel Outer Shell. x1
3M-2000PLUS Duct - 3M Fire Barrier 2000 Plus Silicone - Used as sealant to Seal Duct Joints. x4
DW14DWCLASY-3Z-S Duct - 14" Duct - 20" Double "V" Clamp - 3Z Insulation & Single "V" Clamp Included - Zero Clearance. x7
Duct Run #2 - Duct-Hood 2
(P1) DW1427DWAJD-3Z-S Double Wall Adjustable Duct - 14" Inner Duct - 3 Layers Zero Clearance - 20" Stainless Steel Outer Shell. Min Length = 11" / Max Length = 24.5" / Adjustment = 13.5" / Adjustable Section May Need To Be Cut. Includes single and double wall "V" Clamps. x1
(P2) DW1490DWASY-3Z-S Double Wall Duct - 14" Inner 90 Duct - 3 Layers Zero Clearance - 20" Stainless Steel Outer Shell. x1
(P3) DW1402DWOFFSETASY-3Z-S Double Wall Duct - 14" Inner Duct Riser & 2 Degree Offset - 3 Layers Zero Clearance - 20" Stainless Steel Outer Shell. x1
(P4) DW1423DWLT-3Z-S Double Wall Duct - 14" Inner Duct, 23" long - 3 Layers Zero Clearance - 20" Stainless Steel Outer Shell. x1
(P5) DW1447DWAJD-3Z-S Double Wall Adjustable Duct - 14" Inner Duct - 3 Layers Zero Clearance - 20" Stainless Steel Outer Shell. Min Length = 11" / Max Length = 48.5" / Adjustment = 30.5" / Adjustable Section May Need To Be Cut. Includes single and double wall "V" Clamps. x1
(P6) DW14DWTEASY-3Z-S Double Wall Duct - 14" Inner Tee Duct - 3 Layers Zero Clearance - 20" Stainless Steel Outer Shell. x1
(P7) DW1447DWLT-3Z-S Double Wall Duct - 14" Inner Duct, 47" long - 3 Layers Zero Clearance - 20" Stainless Steel Outer Shell. x1
(P8) DW1423DWLT-3Z-S Double Wall Duct - 14" Inner Duct, 23" long - 3 Layers Zero Clearance - 20" Stainless Steel Outer Shell. x1

(P9) DW1447DWAJD-3Z-S Double Wall Adjustable Duct - 14" Inner Duct - 3 Layers Zero Clearance - 20" Stainless Steel Outer Shell. Min Length = 11" / Max Length = 48.5" / Adjustment = 30.5" / Adjustable Section May Need To Be Cut. Includes single and double wall "V" Clamps. x1

(P10) DW1490DWASY-3Z-S Double Wall Duct - 14" Inner 90 Duct - 3 Layers Zero Clearance - 20" Stainless Steel Outer Shell. x1

(P11) DW1423DWLT-3Z-S Double Wall Duct - 14" Inner Duct, 23" long - 3 Layers Zero Clearance - 20" Stainless Steel Outer Shell. x1

(P12) DW1447DWAJD-3Z-S Double Wall Adjustable Duct - 14" Inner Duct - 3 Layers Zero Clearance - 20" Stainless Steel Outer Shell. Min Length = 11" / Max Length = 48.5" / Adjustment = 30.5" / Adjustable Section May Need To Be Cut. Includes single and double wall "V" Clamps. x1

(P13) DW14DWTEASY-3Z-S Double Wall Duct - 14" Inner Tee Duct - 3 Layers Zero Clearance - 20" Stainless Steel Outer Shell. x1

(P14) DW14DWACCDORCOV-3Z-S Double Wall Duct - 14" Inner Access Door & 20" Access Door Cover With Clamps - 3 Layers Zero Clearance - 20" Stainless Steel Outer Shell. x1

(P15) DW1402DWOFFSETASY-3Z-S Double Wall Duct - 14" Inner Duct Riser & 2 Degree Offset - 3 Layers Zero Clearance - 20" Stainless Steel Outer Shell. x1

(P16) DW1423DWLT-3Z-S Double Wall Duct - 14" Inner Duct, 23" long - 3 Layers Zero Clearance - 20" Stainless Steel Outer Shell. x1

(P17) DW1447DWAJDTP-3Z-S Double Wall Adjustable Duct Transition Plate - 14" Inner Duct - 3 Layers Zero Clearance - 20" Stainless Steel Outer Shell. Min Length = 11" / Max Length = 48.5" / Adjustment = 30.5" / Adjustable Section May Need To Be Cut.

Includes single and double wall "V" Clamps. x1

(P18) DW2614TP Duct to Curb Transition, 26-1/2" Curb to 14" Duct, 16 GA Aluminized. Used on BDU18. x1

(P19) DW14DWACCDORCOV-3Z-S Double Wall Duct - 14" Inner Access Door & 20" Access Door Cover With Clamps - 3 Layers Zero Clearance - 20" Stainless Steel Outer Shell. x1

3M-2000PLUS Duct - 3M Fire Barrier 2000 Plus Silicone - Used as sealant to Seal Duct Joints. x4

DW14DWCLASY-3Z-S Duct - 14" Duct - 20" Double "V" Clamp - 3Z Insulation & Single "V" Clamp Included - Zero Clearance. x7

Duct Run #3 - Duct-Hood 3

(P1) DW1007LT Single Wall Duct 10" diameter, 7" long, flange at both ends. Stainless Steel. x1

(P2) DW1012AJDKIT Single Wall Duct Adjustable, 10" diameter, 11.5" long, flange at one end With a 10" Adjustable Collar - Stainless Steel. x1

(P3) DW1004C2D Single Wall Duct Off Set Collar - 10" diameter duct - 1/2" Pitch. x1

(P4) DW1090ASY Single Wall Duct 90 Degree Elbow, 10" Duct, Assembly. x1

(P5) DW1047LT Single Wall Duct 10" diameter, 47" long, flange at both ends. Stainless Steel. x1

				<p>(P6) DW1047LT Single Wall Duct 10" diameter, 47" long, flange at both ends. Stainless Steel. x1</p> <p>(P7) DW1047LT Single Wall Duct 10" diameter, 47" long, flange at both ends. Stainless Steel. x1</p> <p>(P8) DW1023LT Single Wall Duct 10" diameter, 23" long, flange at both ends. Stainless Steel. x1</p> <p>(P9) DW1048AJDKIT Single Wall Duct Adjustable, 10" diameter, 47.5" long, flange at one end With a 10" Adjustable Collar - Stainless Steel. x1</p> <p>(P10) DW1090ASY Single Wall Duct 90 Degree Elbow, 10" Duct, Assembly. x1</p> <p>(P11) DW1047LT Single Wall Duct 10" diameter, 47" long, flange at both ends. Stainless Steel. x1</p> <p>(P12) DW1047LT Single Wall Duct 10" diameter, 47" long, flange at both ends. Stainless Steel. x1</p> <p>(P13) DW1047LT Single Wall Duct 10" diameter, 47" long, flange at both ends. Stainless Steel. x1</p> <p>(P14) DW1047LT Single Wall Duct 10" diameter, 47" long, flange at both ends. Stainless Steel. x1</p> <p>(P15) DW1047LT Single Wall Duct 10" diameter, 47" long, flange at both ends. Stainless Steel. x1</p> <p>(P16) DW1047LT Single Wall Duct 10" diameter, 47" long, flange at both ends. Stainless Steel. x1</p> <p>(P17) DW1023LT Single Wall Duct 10" diameter, 23" long, flange at both ends. Stainless Steel. x1</p> <p>(P18) DW1048AJDKIT Single Wall Duct Adjustable, 10" diameter, 47.5" long, flange at one end With a 10" Adjustable Collar - Stainless Steel. x1</p> <p>(P19) DW1090ASY Single Wall Duct 90 Degree Elbow, 10" Duct, Assembly. x1</p> <p>(P20) DW1004C2D Single Wall Duct Off Set Collar - 10" diameter duct - 1/2" Pitch. x1</p> <p>(P21) DW1023LT Single Wall Duct 10" diameter, 23" long, flange at both ends. Stainless Steel. x1</p> <p>(P22) DW1048AJDKIT Single Wall Duct Adjustable, 10" diameter, 47.5" long, flange at one end With a 10" Adjustable Collar - Stainless Steel. x1</p> <p>(P23) DW1910TP Duct to Curb Transition, 19-1/2" Curb to 10" Duct, 16 GA Aluminized Steel. Misc. non-standard transition plate. x1</p> <p>3M-2000PLUS Duct - 3M Fire Barrier 2000 Plus Silicone - Used as sealant to Seal Duct Joints. x4</p> <p>DW10CLASY Duct "V" Clamp With new design 14 Ga Brackets, 10" Duct, Assembly. x21</p>
Captive-Aire	1	FACTORY SERVICES	<p>Factory Services</p> <p>Service Design Verification Building Surcharge x1</p> <p>Service Design Verification for CASLink. x2</p> <p>Service Design Verification for Demand Control Ventilation x1</p> <p>Service Design Verification for DOAS x1</p> <p>Service Design Verification for Exhaust Fan x3</p> <p>Service Design Verification for Hood x3</p> <p>Service Design Verification for Site Meeting w/ additional mileage charge. x1</p> <p>Service Design Verification Mileage Charge: (16) x 4 = 64 total miles x1</p>	
Captive-Aire	1	BACKSPLASH	The stainless wall cladding behind the hoods is included-	
Captive-Aire	1	SHIPPING	Inbound freight charges from the factory to the jobsite	
Captive-Aire	1	HANGING	Hanging the hoods from structural members that are to be provided by the GC, installauing the stainless wall cladding behind the hoods with	

cutouts as needed, installing the stainless panels to enclose the hood to the ceiling (only if ready when we hang)