

LOUVER SCHEDULE										
SYMBOL	DESCRIPTION	SIZE WxH	RAIN	BACKRAFT DAMPER	SCREEN	MATERIAL	PAINT	MANUFACTURER	MODEL	REMARKS
L-1	STATIONARY INTAKE	24x18	YES	MOTORIZED	BIRD	ALUMINUM	MATCH BUILDING	RUSKIN	ELF375DX	-

NOTES:

1. INTAKE LOUVER L-1 WITH F-1 TO OPEN WHEN FAN IS OPERATIONAL USE 24V.

REGISTER SCHEDULE										
SYMBOL	DESCRIPTION	NECK	RUN OUT	RADIATION DAMPER	BALANCING DAMPER	MATERIAL	COLOR	MFG.	MODEL	REMARKS
A	2x2 LAY-IN SUPPLY 4-WAY SUPPLY	6x6	6"ø	NO	YES	STEEL	WHITE	PRICE	SMD	-
B	2x2 LAY-IN SUPPLY 4-WAY SUPPLY	6x6	7"ø	NO	YES	STEEL	WHITE	PRICE	SMD	---
C	2x2 LAY-IN SUPPLY 4-WAY SUPPLY	9x9	8"ø	NO	YES	STEEL	WHITE	PRICE	SMD	---
D	2x2 LAY-IN SUPPLY 4-WAY SUPPLY	9x9	9"ø	NO	YES	STEEL	WHITE	PRICE	SMD	-
E	2x2 LAY-IN SUPPLY 4-WAY SUPPLY	12x12	10"ø	NO	YES	STEEL	WHITE	PRICE	SMD	-
F	2x2 LAY-IN SUPPLY 4-WAY SUPPLY	12x12	12"ø	NO	YES	STEEL	WHITE	PRICE	SMD	-
G	SURFACE 4-WAY SUPPLY	6x6	6"ø	NO	YES	STEEL	WHITE	PRICE	SMD	-
H	SURFACE 4-WAY SUPPLY	6x6	7"ø	NO	YES	STEEL	WHITE	PRICE	SMD	-
I	SURFACE 4-WAY SUPPLY	9x9	8"ø	NO	YES	STEEL	WHITE	PRICE	SMD	-
J	SURFACE 4-WAY SUPPLY	9x9	9"ø	NO	YES	STEEL	WHITE	PRICE	SMD	-
K	SURFACE 4-WAY SUPPLY	12x12	10"ø	NO	YES	STEEL	WHITE	PRICE	SMD	-
L	SURFACE 4-WAY SUPPLY	12x12	12"ø	NO	YES	STEEL	WHITE	PRICE	SMD	-
M	PERFORATED SUPPLY LAY-IN	24x24	10"ø	NO	NO	STEEL	WHITE	PRICE	10 SERIES	USE RETURN GRILLE
N	PERFORATED SUPPLY LAY-IN	24x24	12"ø	NO	NO	STEEL	WHITE	PRICE	10 SERIES	USE RETURN GRILLE
P	SIDEWALL SUPPLY	4x8	6"ø	NO	YES	STEEL	WHITE	PRICE	540	-
Q	SIDEWALL SUPPLY	12x6	7"ø	NO	YES	STEEL	WHITE	PRICE	540	-
R	2X2 LAY-IN 3-WAY SUPPLY	9x9	8"ø	NO	YES	STEEL	WHITE	PRICE	SMD	3-WAY
S	SURFACE PERFORATED SUPPLY	16x16	9"ø	NO	YES	STEEL	WHITE	PRICE	PDR	USE RETURN AIR GRILLE
T	SURFACE PERFORATED SUPPLY	18x18	12"ø	NO	YES	STEEL	WHITE	PRICE	PDR	-
RA	2' x 2' LAY-IN RETURN	22x22		NO	YES	STEEL	WHITE	PRICE	530	-
RB	SURFACE RETURN	10x8		NO	YES	STEEL	WHITE	PRICE	530	150
RC	SURFACE RETURN	12x12		NO	YES	STEEL	WHITE	PRICE	530	150-400
RD	SURFACE RETURN	18x18		NO	YES	STEEL	WHITE	PRICE	530	400-750
RE	SURFACE RETURN	24x18		NO	YES	STEEL	WHITE	PRICE	530	750-1000
RF	SURFACE RETURN	30x18		NO	YES	STEEL	WHITE	PRICE	530	1200

FAN SCHEDULE										
SYMBOL	DESCRIPTION	CFM	S. P.	SET CFM	VOLT	PHASE	HP	AMPS	MOUNTING	MANUFACTURER
F-1	VENT FAN ROOF MOUNT	1179	1"	900	120	1	-	4	ROOF	GREENHECK
F-2	VENT FAN ROOF MOUNT	120	1"	100	120	1	-	-	ROOF	GREENHECK
F-3	VENT FAN	228	1"	170	120	1	-	-	CEILING	GREENHECK
F-4	VENT FAN	154	1"	80	120	1	-	-	CEILING	GREENHECK

NOTES:

- PROVIDE BACK DRAFT DAMPER.
- PROVIDE SPEED CONTROL.
- PROVIDE ROOF CURB.
- INTERLOCK WITH INTAKE LOUVER.

SYMBOL	DESCRIPTION	CFM	kW	VOLT	PHASE	THERMOSTAT	MFG.	MODEL	DUCT AT HEATER	REMARKS
DH-1	DUCT HEATER	125	3	208	1	YES	MARKEL	SCR	1, 2, 3, 4, 5, 6	SEE NOTES
DH-2	DUCT HEATER	125	3	208	1	YES	MARKEL	SCR	1, 2, 3, 4, 5, 6	SEE NOTES
DH-3	DUCT HEATER	100	2	208	1	YES	MARKEL	SCR	1, 2, 3, 4, 5, 6	SEE NOTES
DH-4	DUCT HEATER	125	3	208	1	YES	MARKEL	SCR	1, 2, 3, 4, 5, 6	SEE NOTES
DH-5	DUCT HEATER	290	4.5	208	1	YES	MARKEL	SCR	1, 2, 3, 4, 5, 6	SEE NOTES

NOTES:

- PROVIDE AUTOMATIC RESET THAT LIMITS OUTLET TEMPERATURE TO MANUFACTURER'S REQUIRED SETTING OR LESS.
- ELECTRIC HEATER ELEMENTS SHALL BE EQUIPPED WITH FUSIBLE LINKS OR MANUAL RESET TEMPERATURE CONTROL TO MAINTAIN OUTLET TEMPERATURE TO MANUFACTURER'S REQUIRED SETTING.
- HEATER SHALL BE LISTED AND BEAR THE MARK OF AN APPROVED TESTING AGENCY.
- PROVIDE THERMOSTAT TO ACTIVATE THE AHU.
- PROVIDE FLOW SWITCH - SWITCH SHALL NOT BE SET ABOVE 30% OF OPERATING CFM.
- DUCT SIZE AT HEATER SHALL BE SUCH THAT MANUFACTURER RECOMMENDED VELOCITY AT HEATER IS ACHIEVED. CONSULT MANUFACTURER FOR SIZING.

DUCTLESS SPLIT SYSTEM UNIT SCHEDULE - IT ROOM (A/C ONLY)											
COOLING CAP (TONS)	AIR HANDLER		OUTSIDE UNIT		MFG	VOLT	PHASE	FUSE	SEER	HSPF	REMARKS
	SYMBOL	MODEL	SYMBOL	MODEL							
1 TON	DAHU-1	PKA-A12H47	DAC-1	PUY-A12KA7	MITSUBISHI	208	1	15/2	20.8	10.2	-
1 TON	DAHU-2	PKA-A12H47	DAC-2	PUY-A12KA7	MITSUBISHI	208	1	15/2	20.8	10.2	-

NOTES:

- PROVIDE CONCRETE PAD.
- VERIFY WITH THE IT CONTRACTOR THAT THE 1 TON UNIT HAS SUFFICIENT CAPACITY TO COOL THE IT SYSTEMS BEFORE ORDERING EQUIPMENT.

ROOF MOUNTED GRAVITY DISCHARGE & INTAKE							
SYMBOL	TYPE	DESIGN CFM	MANUFACTURER	SIZE	MODEL	MOUNTING	SERVICE
DC-1	DISCHARGE	2195	GREENHECK	24"ø	GRS-24	ALUMINUM	DOAS-1
DC-2	DISCHARGE	2870	GREENHECK	30"ø	GRS-30	ALUMINUM	DOAS-2
DC-3	DISCHARGE	2375	GREENHECK	30"ø	GRS-30	ALUMINUM	DOAS-3
DC-4	DISCHARGE	2535	GREENHECK	30"ø	GRS-30	ALUMINUM	DOAS-4
DC-5	DISCHARGE	1140	GREENHECK	20"ø	GRS-20	ALUMINUM	DOAS-5
DC-6	DISCHARGE	1340	GREENHECK	20"ø	GRS-20	ALUMINUM	DOAS-6
DC-7	DISCHARGE	2320	GREENHECK	30"ø	GRS-30	ALUMINUM	DOAS-7
DC-8	DISCHARGE	250	GREENHECK	10"ø	GRS-10	ALUMINUM	FANS 3, 4
DC-9	DISCHARGE	1750	GREENHECK	24"ø	GRS-24	ALUMINUM	DOAS-8
IC-1	INTAKE	460	GREENHECK	12"ø	GRS1-12	ALUMINUM	DOAS-9

NOTES:

- PROVIDE ROOF CURB.
- PROVIDE BACKRAFT DAMPERS.
- THE OUTDOOR UNITS SHALL BE SECURED TO COMPLY WITH THE LOCAL WIND LOAD REQUIREMENTS.

WALL HEATER SCHEDULE						
SYMBOL	DESCRIPTION	kW	VOLT	PHASE	THERMOSTAT	MFG.
WH-1	WALL	2	208	1	ON UNIT	Q-MARK

SPLIT SYSTEM UNIT SCHEDULE																						
OUTDOOR UNIT	COOLING CAP (TONS)	ELECTRICAL				MFG	MODEL	ELECTRIC								AIR HANDLER						
		VOLT	PHASE	MCA	FUSE			SYMBOL	TYPE	STRIP (KW)	VOLT	PHASE	MCA	FUSE	MFG	MODEL	FAN CFM	FRESH AIR INTAKE (CFM)	ESP (IN OF H ₂ O) VERT./H.R.	SEER	DUCT DETECTOR	HUMIDITY CONTROL
HP-1	2½	208	1		25	TRANE	4TWR5030	AHU-1	HORZ	7.2	208	1	38	50	TRANE	TEMA0C30	975	125	0.9	15	NO	YES
HP-2	2½	208	1		25	TRANE	4TWR5030	AHU-2	HORZ	7.2	208	1	38	50	TRANE	TEMA0C30	960	125	0.7	15	NO	YES
HP-3	3	208	1		30	TRANE	4TWR5036	AHU-3	HORZ	7.2	208	1	38	50	TRANE	TEMA0C42	1175	125	0.9	15	NO	YES
HP-4	2	208	1		25	TRANE	4TWR5024	AHU-4	HORZ	5.7	208	1	35	40	TRANE	TEMA0B24	800	0	0.9	15	NO	YES

NOTES A/C UNITS:

- PROVIDE GALVANIZED DRIP PANS AT EACH UNIT WITH PAN DRAINS TO OUTSIDE BUILDING.
- PROVIDE SOLID STATE PROGRAMMABLE THERMOSTAT WITH SET BACK CONTROLS FOR TIME OF DAY AND DAY OF WEEK, AND CAPABLE OF TEMPORARY MANUAL OVERRIDE.
- PROVIDE SUPPORT FOR COMPRESSOR.
- CONTRACTOR SHALL PROVIDE AS A MINIMUM, PROVIDE TWO 24"x24"x2" MERV 13 FILTERS, MAX HP=0.125 IN.
- PROVIDE FRENCH DRAINS PER N.C. STATE CODE FOR CONDENSATE DISCHARGE.
- PROVIDE MANUFACTURER RECOMMENDED CLEARANCES AROUND ALL INDOOR AND OUTDOOR UNITS.
- CONSULT WITH COMPRESSOR MANUFACTURER FOR THE CORRECT SIZING OF REFRIGERANT LINES. PROVIDE MANUFACTURER RECOMMENDED EQUIPMENT FOR ANY LONG REFRIGERANT LINE LENGTHS.
- PROVIDE LOW AMBIENT CONTROLS FOR FREEZE PROTECTION.
- PROVIDE CONTROLS THAT PREVENT AUXILIARY HEAT STRIPS FROM BEING ACTIVATED WHEN THE HEAT PUMP CAN HANDLE THE HEATING LOAD EXCEPT DURING DEFROST CYCLE.
- FOR UNITS SHOWING A COMBINATION THERMOSTAT/AMMISTAT ON THE PLANS, PROVIDE A UNIT MEETING THE REQUIREMENTS CONTROL ABOVE AND COMPATIBLE WITH SIMPLE ENGINEERED SOLUTIONS HP0W-XX (VERIFY SPECIFIC MODEL FOR APPLICATION) MODULE OR EQUAL. HUMIDITY SHALL ACTIVATE THE COOLING STATE UPON HUMIDITY CALL. THE THERMOSTAT SHALL BE CAPABLE OF OPERATING THE HEAT STRIPS FOR TEMPERATURE CONTROL WHILE A HIGH HUMIDITY CALL IS BEING MADE. CONSULT WITH EQUIPMENT MANUFACTURER FOR WIRING DIAGRAM.
- THE ENTIRE OUTDOOR UNIT (COIL, CABINET, ETC) SHALL BE CORROSION PROTECTED TO MEET ASTM B117 5,000 HOUR SALT SPRAY STANDARD.
- AHU COIL SHALL COME WITH MANUFACTURER FACTORY APPLIED BLACK EPOXY COATING.
- THE OUTDOOR UNITS SHALL BE SECURED TO COMPLY WITH THE LOCAL WIND LOAD REQUIREMENTS.

LLLOYD INDUSTRIES INC.
WWW.FIREHAMPER.COM

CEILING RADIATION DAMPER

MODEL: 50EA (Rectangular)

APPLICATION
The CRD-50EA has been UL tested and labeled for protection of ceiling openings in fire rated door/ceiling assemblies with fire resistance ratings of 3 hours or less. This product can also be applied to steel lay-in style ceiling diffusers up to 24 in. x 24 in. (610mm x 610mm) maximum size. The damper is UL fire rated Ceiling/Floor Assembly L-563 and Ceiling/Roof Assembly P-544.

RATING:
UL CLASSIFIED: UL 555C Fire Resistance Rating
Fire resistance rated 3 Hours
Building materials rated 3 Hours or less

Model CRD 50EA needs the requirements for fire dampers established by:
CSFM California State Fire Marshal Fire Damper Listing (#3225-1417-101)

Standard Construction

- UL listed link (165°F Standard)
- Blades 22 (0.853mm) Gs. Galv. Steel
- Roll-formed frame 22 (0.853mm) ga. Galv. Steel
- Steel duct drop (by others).

Note:

- Maximum size 24"x24" (600mm x 600mm)
- Minimum size 4"x6" (101mm x 152mm)
- Manufactured with blade opening as per sketch #1: when "W" equal to or greater than "H".
- Manufactured with blade opening as per sketch #2: when "W" is less than 6" and "H" is greater than "W".

"Ceramic insulation is not UL required on dampers with areas less than 80 square inches and is optional. Dampers above 80 square inches will be provided with blade insulation.

231 Commerce Dr. Montgomeryville, PA 18936 Tel: 610-412-4445 Fax: 610-412-4400
Email: hloydind@firedamper.com Website: www.firedamper.com

138 Industrial Loop West, Orange Park, FL 32073 Tel: 904-541-1055 Fax: 904-541-1057
Email: hloydind@firehamper.net Website: www.firehamper.com

B1, 4/F., Luen Ming Hing Factory Building 36 Nak Chong St. Tel: 65-2764-4118 Fax: 65-2764-4177
Email: stanleyym@hoydata.com Website: www.hoydata.com

UL Listed Models: No. 203

LLLOYD INDUSTRIES INC.
WWW.FIREHAMPER.COM

FIRE DAMPER

MODEL: 75C (1-1/2 HR rating)
75CO (1-1/2 HR rating)
75CO (1-1/2 HR rating)

APPLICATION
The model 75C is a Lloyd industries' fire damper with blades and frames "Out of Air Stream". It is approved for use in walls, floors, and partitions with fire resistance ratings less than 2 hours. This model carries a 1-1/2 hour UL fire damper label.

RATING:
UL CLASSIFIED: UL 555 Fire Resistance Rating
Fire resistance rated 1-1/2 Hours
Partitions rated 2 Hours or less

Model 75C meets the requirements for fire dampers established by:
CSFM California State Fire Marshal Fire Damper Listing (#3225-1417-100)
New York City (MCA listing #215-99-E)

Standard Construction

Frame: 22 ga. Galvanized Steel
Blade: 22 ga. Galvanized Steel
Closure Spring: Stainless Steel
Fusible Link: 165°F
Mounting: Horizontal or Vertical

Model 75C meets the requirements for fire dampers established by:
CSFM California State Fire Marshal Fire Damper Listing (#3225-1417-100)
New York City (MCA listing #215-99-E)

Single Section

	Maximum Section Width (WxH)	Maximum Duct Size (WxH)	Minimum Diameter	Maximum Diameter
Vertical	60"x60"	120"x120"	3"	52"
Horizontal	60"x60"	60"x60"	3"	52"

Model: 75CV, 75COV, 75COH (Vertical Mount)

Model: 75CH, 75COH (Horizontal Mount)

231 Commerce Dr. Montgomeryville, PA 18936 Tel: 610-412-4445 Fax: 610-412-4400
Email: hloydind@firedamper.com Website: www.firedamper.com

138 Industrial Loop West, Orange Park, FL 32073 Tel: 904-541-1055 Fax: 904-541-1057
Email: hloydind@firehamper.net Website: www.firehamper.com

B1, 4/F., Luen Ming Hing Factory Building 36 Nak Chong St. Tel: 65-2764-4118 Fax: 65-2764-4177
Email: stanleyym@hoydata.com Website: www.hoydata.com

UL Listed Models: No. 203

VERIFY WITH MANUFACTURER THE ACCEPTABILITY OF THIS PRODUCT WITH THE INSTALLATION AND APPLICATION PRIOR TO ORDERING. VERIFY THE MANUFACTURER HAS DOCUMENTATION THAT THE DAMPER CAN BE INSTALLED WITH ALUMINUM GRILLES/DIFFUSERS PRIOR TO ORDERING. INSTALLATION SHALL BE AS PER THE MANUFACTURERS RECOMMENDATIONS.

A

M1

RADIATION DAMPER DETAIL

SCALE: NTS

FUSE NOTES:

1. SET ALL FUSIBLE LINKS AT 165°F.

B

M1

STATIC FIRE DAMPER DETAIL

SCALE: NTS

1 HR SHEETROCK CEILING

VERIFY WITH MANUFACTURER THE ACCEPTABILITY OF THIS PRODUCT WITH THE INSTALLATION AND APPLICATION PRIOR TO ORDERING. INSTALLATION SHALL BE AS PER THE MANUFACTURERS RECOMMENDATIONS.

VERIFY WITH MANUFACTURER THE ACCEPTABILITY OF THIS PRODUCT WITH THE INSTALLATION AND APPLICATION PRIOR TO ORDERING. INSTALLATION SHALL BE AS PER THE MANUFACTURERS RECOMMENDATIONS.

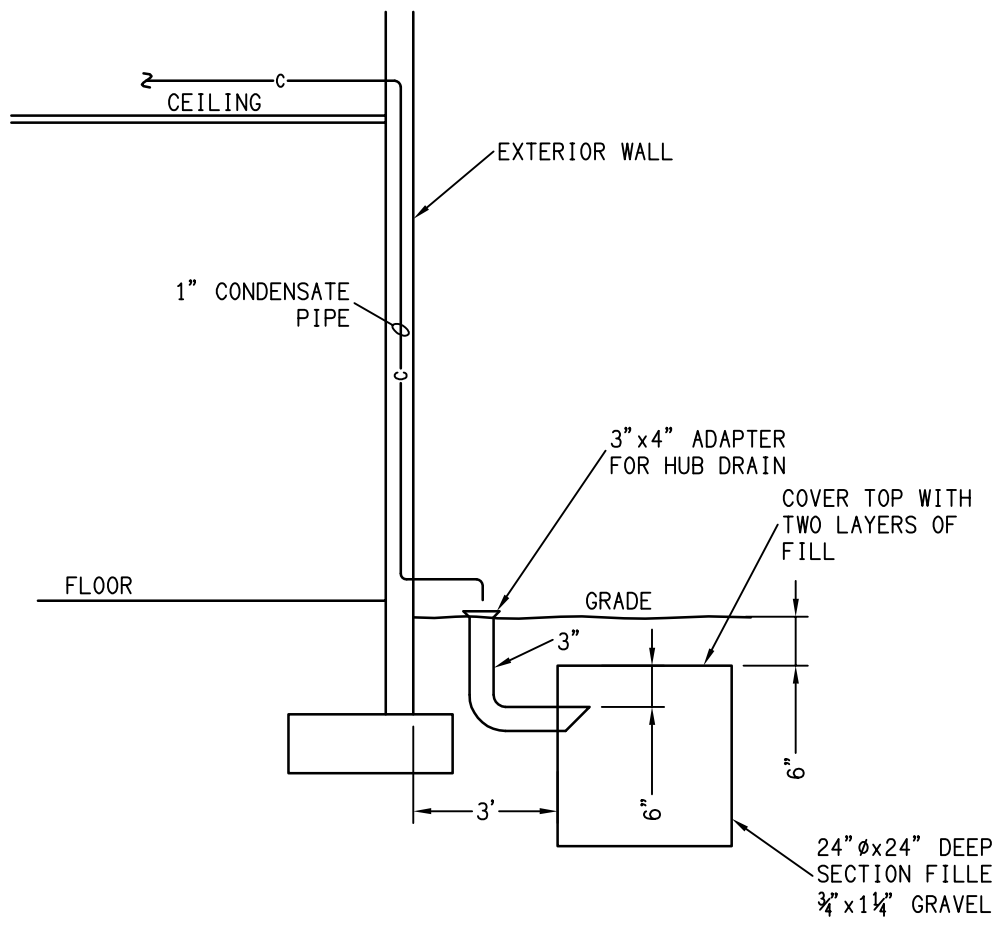
C

M1

1-1/2 HR FIRE-SMOKE DAMPER DETAIL

SCALE: NTS

2 HR FIREWALL/SMOKE BARRIER



D

M1

FRENCH DRAIN DETAIL

SCALE: NONE

ARCHITECTURAL CONCEPTS INC.
2481 WEST BAY DRIVE, SUITE 503, LARGO, FL 33779
Phone: 727/584-7174 Fax: 727/584-4359 Email: Architectural_Concept@comcast.net

DAVID SIMS, P.E.
10/06/2022

LEO BROWN GROUP
DAVID SIMS & ASSOCIATES, P.C.
CONSULTING ENGINEERS
AGBROOK CENTRE
108 GILES AVE, SUITE 100
WILMINGTON, NC 28403
910.791.8016
NC license: C-1150
www.doseng.com

TO THE BEST OF THE ENGINEERS KNOWLEDGE, THE PLANS AND SPECIFICATIONS COMPLY WITH THE APPLICABLE MINIMUM BUILDING CODES AND THE APPLICABLE FIRE-SAFETY STANDARDS AS DETERMINED BY THE LOCAL AUTHORITY IN ACCORDANCE WITH THIS SECTION.

PROPOSED:

LEO BROWN GROUP

THE EMBASSY AT MOREHEAD CITY

A NEW SKILLED NURSING, MEMORY CARE, & ASSISTED LIVING FACILITY

3822 GALANTIS DRIVE
MOREHEAD CITY, NC 28557

DO NOT SCALE PRINTS

THE DOCUMENTS AND THE INFORMATION CONTAINED HEREIN ARE THE SOLE PROPERTY OF ARCHITECTURAL CONCEPTS INC. UNAUTHORIZED REPRODUCTION AND/OR REUSE MAY BE PROSECUTED IN ACCORDANCE WITH THE APPROPRIATE COPYRIGHT AND PATENT LAWS.

PUBLICATION

CONCEPT:

SCHEMATIC DESIGN:

DESIGN DEVELOPMENT:

PERMIT SET:

BID SET:

FOR CONSTRUCTION:

REVISIONS:

REV. # DATE REVISION TITLE

06-08-22 TOWN OF MOREHEAD CITY SITE PLAN REVISIONS

07-11-22 COORDINATION/VE CHANGES + NCDHHS COMMENTS

09-23-22 NCDHHS FIRE MARSHAL COMMENTS

DATE

07-16-21

07-01-21

09-01-21

03-25-22

10-15-21

PLOT DATE:

10/06/2022 10:20:59 AM

FILE LOCATION:

C:\110 TO 99-230\DWG\PROJECTS\2021\1122\Drawings\21122m1.dwg

SHEET DESCRIPTION:

MECHANICAL SCHEDULES

PROJECT NO.

1902

KEY NOTES

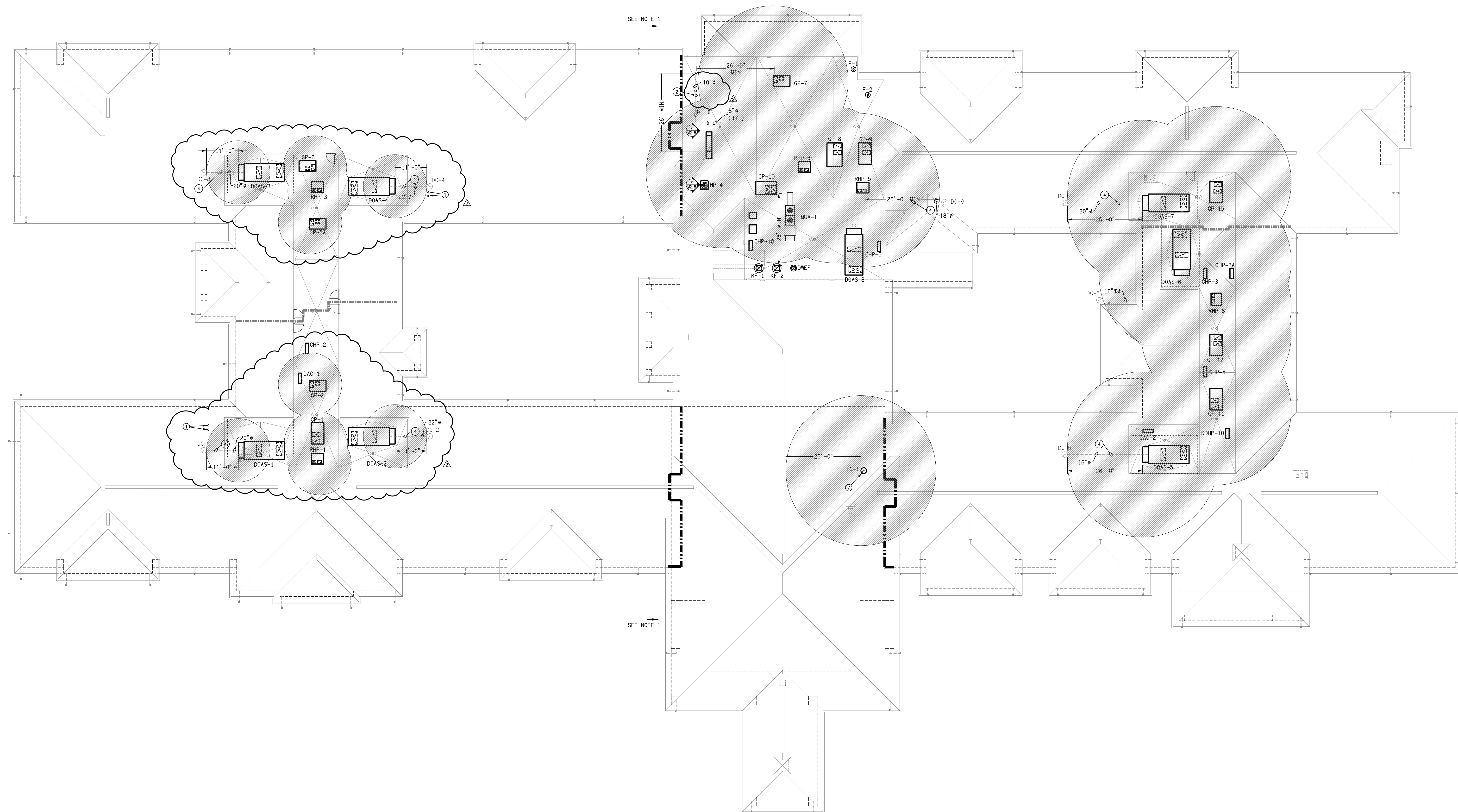
- 4" DRYER DISCHARGE ROOF METAL CAPS WITH BACKDRAFT DAMPER.
- ROUTE DRYER VENTS ACROSS ROOF. VERIFY WITH DRYER MANUFACTURER FOR ENLARGING THE SINGLE DUCT CHANGES TO 10" AND 12" DUCT AS NEEDED TO COMPLY WITH MANUFACTURER'S INSTRUCTIONS.
- FOR DRYER FRESH AIR INTAKE, SEE C/M2.5.
- ROUTE DISCHARGE DUCT THROUGH ATTIC.
- FRESH AIR INTAKE DUCT FOR DOAS-K ROUTED ACROSS ROOF.
- INTAKE TO IC-1 SHALL BE 3'-0" ABOVE THE ROOF.
- ROUTE 10" DUCT TO AHU-1.
- ROUTE DISCHARGE DUCT ACROSS ROOF.

NOTES:

- ON THE SKILLED NURSING AND COMMONS AREAS, FRESH AIR MAKE UP LOCATIONS SHALL BE A MINIMUM OF 26' FROM DISCHARGE AIR POINTS AND PLUMBING VENTS. FOR MEMORY CARE AND ASSISTED LIVING THE DISTANCE SHALL BE 11'.

LEGEND

- CLEARANCE REQUIRED FOR FRESH AIR INTAKE. NO PLUMBING VENTS OR AIR DISCHARGE ALLOWED IN THESE AREAS.



M2.0 MECHANICAL ROOF PLAN
SCALE: 1/16" = 1'-0"



M2.1 MECHANICAL PLAN
SCALE: 3/32" = 1'-0"

NOTES:
1. PROVIDE RADIATION DAMPER WHERE DUCT PENETRATES THE RATED CEILING.

FIRE & SMOKE PARTITION LEGEND	
---	FIRE/SMOKE BARRIER (1HR)
---	FIRE/SMOKE BARRIER (2HR)
---	FIRE BARRIER (1HR)
+++++	SMOKE PARTITION
---	SMOKE PARTITION (SUITE)

ARCHITECTURAL CONCEPTS INC.
2401 WEST BAY DRIVE, SUITE 500, LARGO, FL 34720
Phone: 727.682.7124 Fax: 727.682.4379 Email: Architectural@acinc.com

DAVID SIMS & ASSOCIATES, P.C.
CONSULTING ENGINEERS
ARBORETUM CENTRE
108 GILES AVE., SUITE 100
WILMINGTON, NC 28403
910.791.8016
NC License: C-1150
www.dseng.com

TO THE BEST OF THE ENGINEER'S KNOWLEDGE, THE PLANS AND SPECIFICATIONS COMPLY WITH THE APPLICABLE MINIMUM BUILDING CODES AND THE APPLICABLE FIRE-SAFETY STANDARDS AS DETERMINED BY THE LOCAL AUTHORITY IN ACCORDANCE WITH THIS SECTION.

PROPOSED:

LEO BROWN GROUP

THE EMBASSY AT MOREHEAD CITY

A NEW SKILLED NURSING, MEMORY CARE, & ASSISTED LIVING FACILITY

3822 GALANTIS DRIVE
MOREHEAD CITY, NC 28557

DO NOT SCALE PRINTS

THE DOCUMENTS AND THE INFORMATION CONTAINED HEREIN ARE THE SOLE PROPERTY OF ARCHITECTURAL CONCEPTS INC. UNAUTHORIZED REPRODUCTION AND/OR REUSE MAY BE PROSECUTED IN ACCORDANCE WITH THE APPROPRIATE COPYRIGHT AND PATENT LAWS.

PUBLICATION	DATE	
CONCEPT:		
SCHEMATIC DESIGN:	07-16-21	
PRELIMINARY DESIGN:	07-01-21	
DESIGN DEVELOPMENT:	09-01-21	
PERMIT SET:	03-25-22	
BID SET:	10-15-21	
FOR CONSTRUCTION:		
REVISIONS:		
REV. #	DATE	REVISION TITLE
1	06-08-22	TOWN OF MOREHEAD CITY SITE PLAN REVISIONS
2	07-11-22	COORDINATION/VE CHANGES & NCDHHS COMMENTS
3	09-23-22	NCDOT/FIRE MARSHAL COMMENTS

PLOT DATE:

10/6/2022 12:11:10 PM

FILE LOCATION:

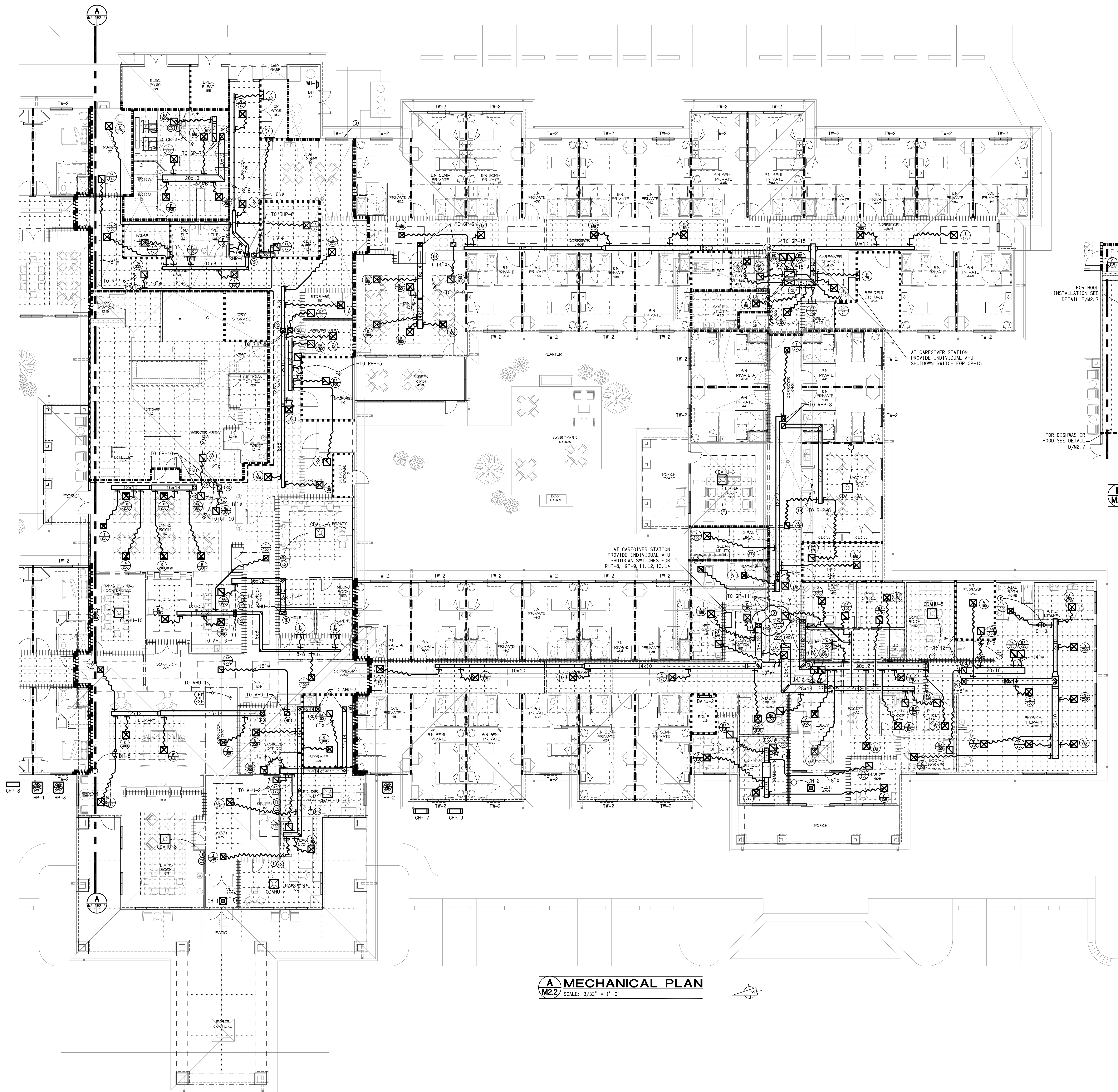
V:\10.10.98.50\wp\PROJECTS\2021\21122\Drawings\21122m2.1.dwg

SHEET DESCRIPTION:

LARGE SCALE MECHANICAL PLAN

PROJECT NO.	SCALE:
1902	AS NOTED
DRAWING NO.	

M2.1



A MECHANICAL PLAN
M2.2 SCALE: 3/32" = 1'-0"

KITCHEN CEILING NOTES:
1. FOR DRY STORAGE ROOM 125
CONFIRM THAT THE RADIATION
DAMPER IS IN SAME PLACE AS
THE RATED CEILING.

FOR HOOD
INSTALLATION SEE
DETAIL E/M2.7

FOR DISHWASHER
HOOD SEE DETAIL
D/M2.7

KEY NOTES:

① AHU LOCATED IN ATTIC. COORDINATE WITH THE
G.C. FOR THE RATED CEILING AND PROVIDE
RADIATION DAMPERS WHERE PENETRATIONS TAKE
PLACE. PROVIDE RADIATION DAMPER AT GRILLE
IF GRILLE IS IN RATED CEILING.

② TRANSFER GRILLE.

③ OPEN FRESH AIR MAKE UP DAMPER.

NOTES:

1. PROVIDE RADIATION DAMPER WHERE DUCT
PENETRATES THE RATED CEILING.

FIRE & SMOKE PARTITION LEGEND

- FIRE/SMOKE BARRIER (1HR)
- - - FIRE/SMOKE BARRIER (2HR)
- FIRE BARRIER (1HR)
- ++++ SMOKE PARTITION
- SMOKE PARTITION (SUITE)

ARCHITECTURAL CONCEPTS
2401 WEST BAY DRIVE, SUITE 500, LARGO, FL 32770
Phone: 407.582.7121 Fax: 407.582.7122 Email: info@ac-inc.com

DAVID SIMS & ASSOCIATES, P.C.
CONSULTING ENGINEERS
ARBORETUM CENTRE
108 GILES AVE., SUITE 100
WILMINGTON, NC 28403
910.791.8014
NC License: C-1150
www.dseng.com

TO THE BEST OF THE ENGINEER'S KNOWLEDGE,
THE PLANS AND SPECIFICATIONS COMPLY
WITH THE APPLICABLE MINIMUM BUILDING
CODES AND THE APPLICABLE FIRE-SAFETY
STANDARDS AS DETERMINED BY THE LOCAL
AUTHORITY IN ACCORDANCE WITH THIS
SECTION.

PROPOSED:

LEO BROWN GROUP

**THE EMBASSY AT
MOREHEAD CITY**

**A NEW SKILLED NURSING,
MEMORY CARE, &
ASSISTED LIVING FACILITY**

3822 GALANTIS DRIVE
MOREHEAD CITY, NC 28557

DO NOT SCALE PRINTS
THE DOCUMENTS AND THE INFORMATION CONTAINED HEREIN
ARE THE SOLE PROPERTY OF ARCHITECTURAL CONCEPTS INC.
UNAUTHORIZED REPRODUCTION AND/OR REUSE MAY BE
PROSECUTED IN ACCORDANCE WITH THE APPROPRIATE
COPYRIGHT AND PATENT LAWS.

PUBLICATION	DATE	
CONCEPT:		
SCHEMATIC DESIGN:	07-16-21	
PRELIMINARY DESIGN:	07-01-21	
DESIGN DEVELOPMENT:	09-01-21	
PERMIT SET:	03-25-22	
BID SET:	10-15-21	
FOR CONSTRUCTION:		
REVISIONS:		
REV. #	DATE	REVISION TITLE
△	06-08-22	TOWN OF MOREHEAD CITY SITE PLAN REVISIONS
△	07-11-22	COORDINATION/VE CHANGES & NCDHHS COMMENTS
△	09-23-22	NCDH-FIRE MARSHAL COMMENTS

PLOT DATE:
10/6/2022 12:09:29 PM

FILE LOCATION:
\\10.10.99.50\dwg\PROJECTS\2021\21220\Drawings\21122m2.1.dwg

SHEET DESCRIPTION:
**LARGE SCALE
MECHANICAL PLAN**

PROJECT NO. 1902	SCALE: AS NOTED
DRAWING NO. M2.2	