

HOOD INFORMATION - Job#2098056

HOOD NO.	TAG	MODEL	LENGTH	MAX. COOKING TEMP.	EXHAUST PLENUM RISER(S)					TOTAL SUPPLY CFM	HOOD CONSTRUCTION	HOOD CONFIG.	
					TOTAL EXH. CFM	WIDTH	LENG.	DIA.	CFM			S.P.	END TO END
1		5424 ND-2-PSP-F	9' 0.00"	450 Deg.	2025	10"	19"	2025	-0.455'	1530	430 SS Where Exposed	LEFT	ALONE
2		5424 ND-2-PSP-F	9' 0.00"	450 Deg.	2025	10"	19"	2025	-0.455'	1700	430 SS Where Exposed	RIGHT	ALONE

HOOD INFORMATION

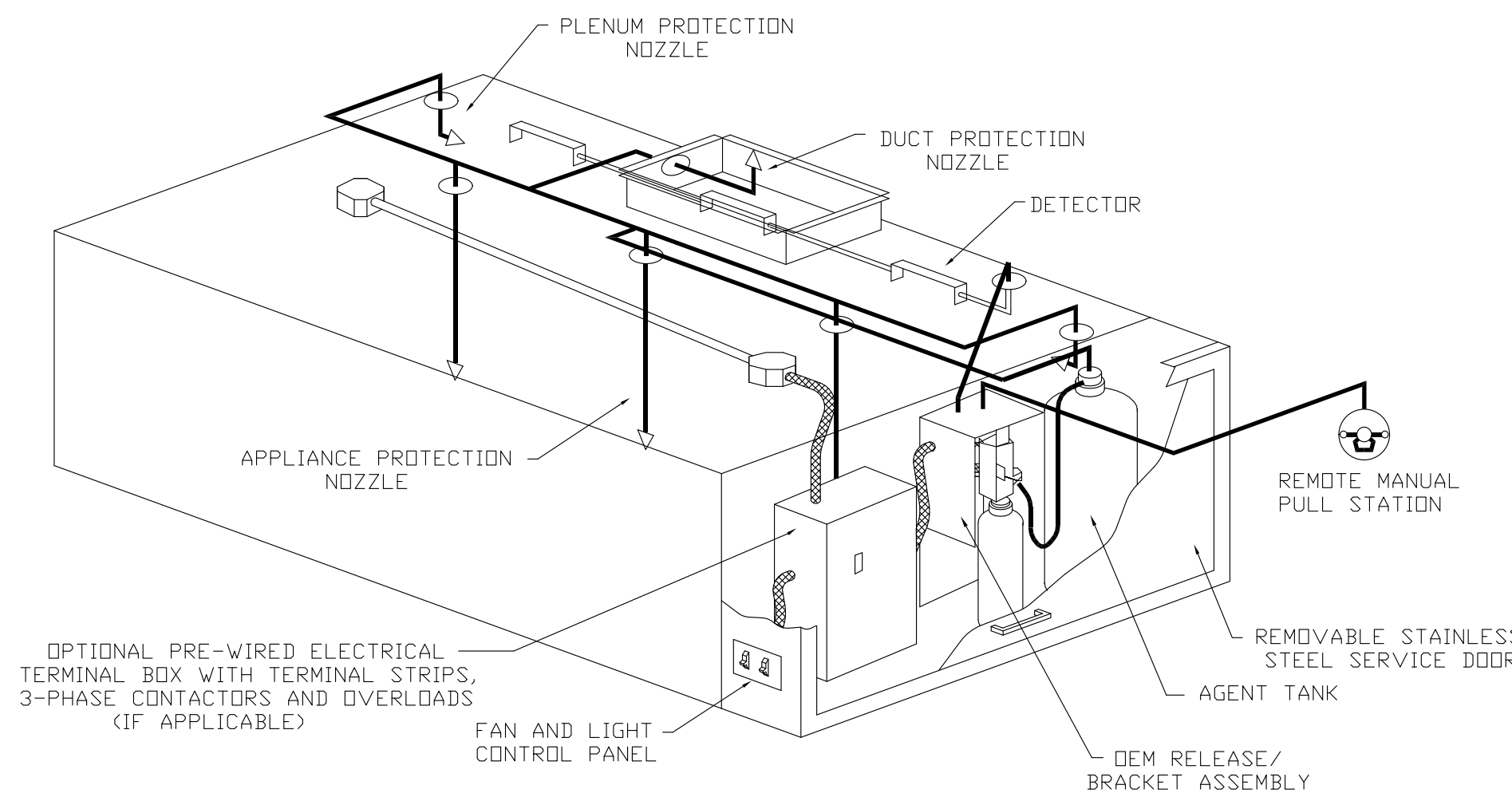
HOOD NO.	TAG	FILTER(S)			LIGHT(S)			UTILITY CABINET(S)				FIRE SYSTEM PIPING	HOOD HANGING WGT		
		TYPE	QTY.	HEIGHT	LENGTH	QTY.	TYPE	WIRE GUARD	LOCATION	FIRE SYSTEM TYPE	SIZE			ELECTRICAL MODEL #	SWITCHES QUANTITY
1		SS Baffle with Handles	6	16"	16"	3	L55 Series E26	NO					YES	377 LBS	
2		SS Baffle with Handles	6	16"	16"	3	L55 Series E26	NO	Right	Ansul R102	3.0/3.0/3.0	SC-321110FP	1 Light 1 Fan	YES	657 LBS

HOOD OPTIONS

HOOD NO.	TAG	OPTION
1		FIELD WRAPPER 17.00' High Front, Left
		BACKSPLASH 80.00' High X 228.00' Long 430 SS
		BACKSPLASH 120.00' High X 18.00' Long 430 SS
		BACKSPLASH 120.00' High X 18.00' Long 430 SS
		LEFT QUARTER END PANEL 23' Top Width, 0' Bottom Width, 23' High 430 SS
2		FIELD WRAPPER 17.00' High Front, Right
		RIGHT QUARTER END PANEL 23' Top Width, 0' Bottom Width, 23' High 430 SS

PERFORATED SUPPLY PLENUM(S)

HOOD NO.	TAG	POS.	LENGTH	WIDTH	HEIGHT	TYPE	RISER(S)			
							WIDTH	LENG.	DIA.	CFM
1		Front	108"	16"	6"	MUA	12"	28"	765	0.189"
						MUA	12"	28"	765	0.189"
2		Front	120"	16"	6"	MUA	12"	28"	844	0.228"
						MUA	12"	28"	844	0.228"



TYPICAL ANSUL R-102 SYSTEM LAYOUT

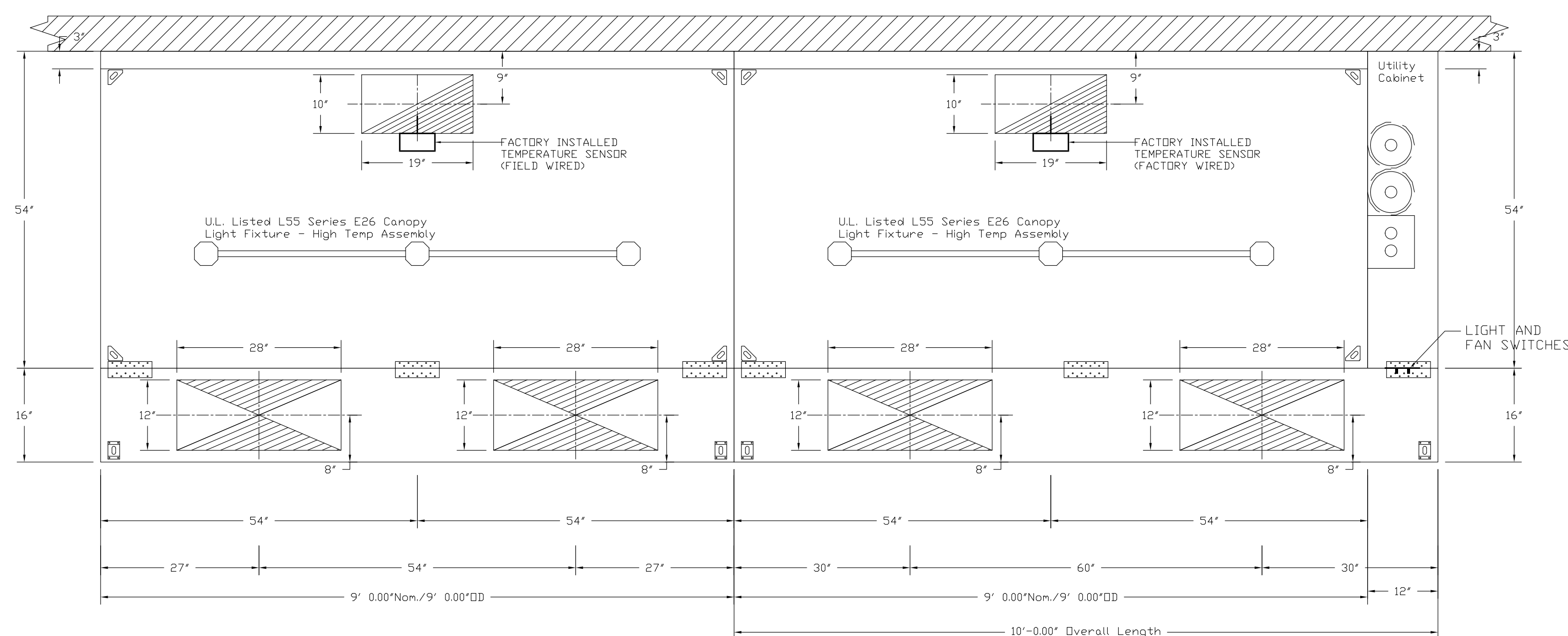
SPECIFICATIONS

THE RESTAURANT FIRE SUPPRESSION SYSTEM SHALL BE THE PRE-ENGINEERED TYPE WITH A FIXED NOZZLE AGENT DISTRIBUTION NETWORK. IT SHALL BE LISTED WITH UNDERWRITERS LABORATORIES, INC. (UL)

THE SYSTEM SHALL BE CAPABLE OF AUTOMATIC DETECTION AND ACTUATION WITH LOCAL OR REMOTE MANUAL ACTUATION. ACCESSORIES SHALL BE AVAILABLE FOR MECHANICAL OR ELECTRICAL GAS LINE SHUT-OFF APPLICATIONS.

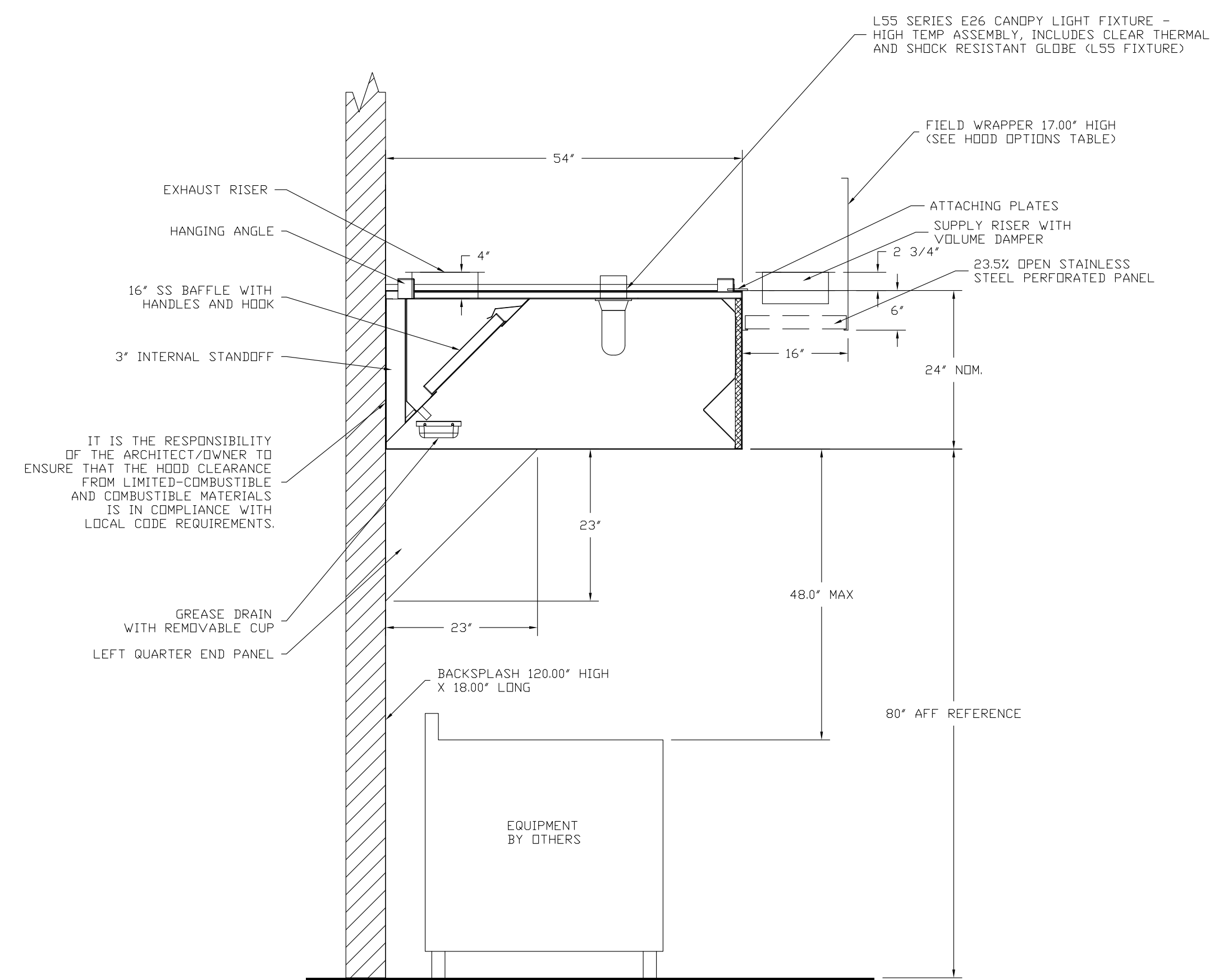
THE EXTINGUISHING AGENT SHALL BE A POTASSIUM CARBONATE, POTASSIUM ACETATE-BASED FORMULATION DESIGNED FOR FLAME KNOCKDOWN AND SECUREMENT OF GREASE RELATED FIRES. IT SHALL BE AVAILABLE IN PLASTIC CONTAINERS WITH INSTRUCTIONS FOR LIQUID AGENT HANDLING AND USAGE.

THE REGULATED RELEASE MECHANISM SHALL BE COMPATIBLE WITH A FUSIBLE LINK DETECTION SYSTEM. THE FUSIBLE LINK SHALL BE SELECTED AND INSTALLED ACCORDING TO THE OPERATING TEMPERATURE IN THE VENTILATING SYSTEM. THE FUSIBLE LINK SHALL BE SUPPORTED BY A DETECTOR BRACKET/LINKAGE ASSEMBLY.



PLAN VIEW - Hood #1
9' 0.00" LONG 5424ND-2-PSP-F

PLAN VIEW - Hood #2
9' 0.00" LONG 5424ND-2-PSP-F



SECTION VIEW - MODEL 5424ND-2-PSP-F
HOODS - #1, #2

REVISIONS	
DESCRIPTION	DATE

Atlanta Office
 4501 Circle 75 Pkwy, Suite E-5280, Atlanta, GA, 30339 PHONE: (800) 882-6626 FAX: (919) 227-6664 EMAIL: reg50@captivair.com

Monterrey - Monroe, NC
 MONROE, NC, 28110

DATE: 7/28/2014
DWG.#: 2098056
DRAWN BY: EJJ-50
SCALE: 3/4" = 1'-0"
HOOD

SHEET NO.
1

EXHAUST FAN INFORMATION - Job#2098056

FAN UNIT NO.	TAG	FAN UNIT MODEL #	CFM	ESP.	RPM	H.P.	Ø	VOLT	FLA	WEIGHT (LBS.)	SONES
1		NCA14FA	2025	1.000	1244	1.000	3	208	3.3	129	14.3
2		NCA14FA	2025	1.000	1244	1.000	3	208	3.3	129	14.3

MUA FAN INFORMATION - Job#2098056

FAN UNIT NO.	TAG	FAN UNIT MODEL #	BLOWER	HOUSING	CFM	ESP.	RPM	H.P.	Ø	VOLT	FLA	WEIGHT (LBS.)	SONES
3		A2-G15	G15-PB	A2	3240	0.500	552	1.000	3	208	3.3	348	8.4

FAN OPTIONS

FAN UNIT NO.	TAG	OPTION (Qty. - Descr.)
1		1 - Grease Box
2		1 - Grease Box

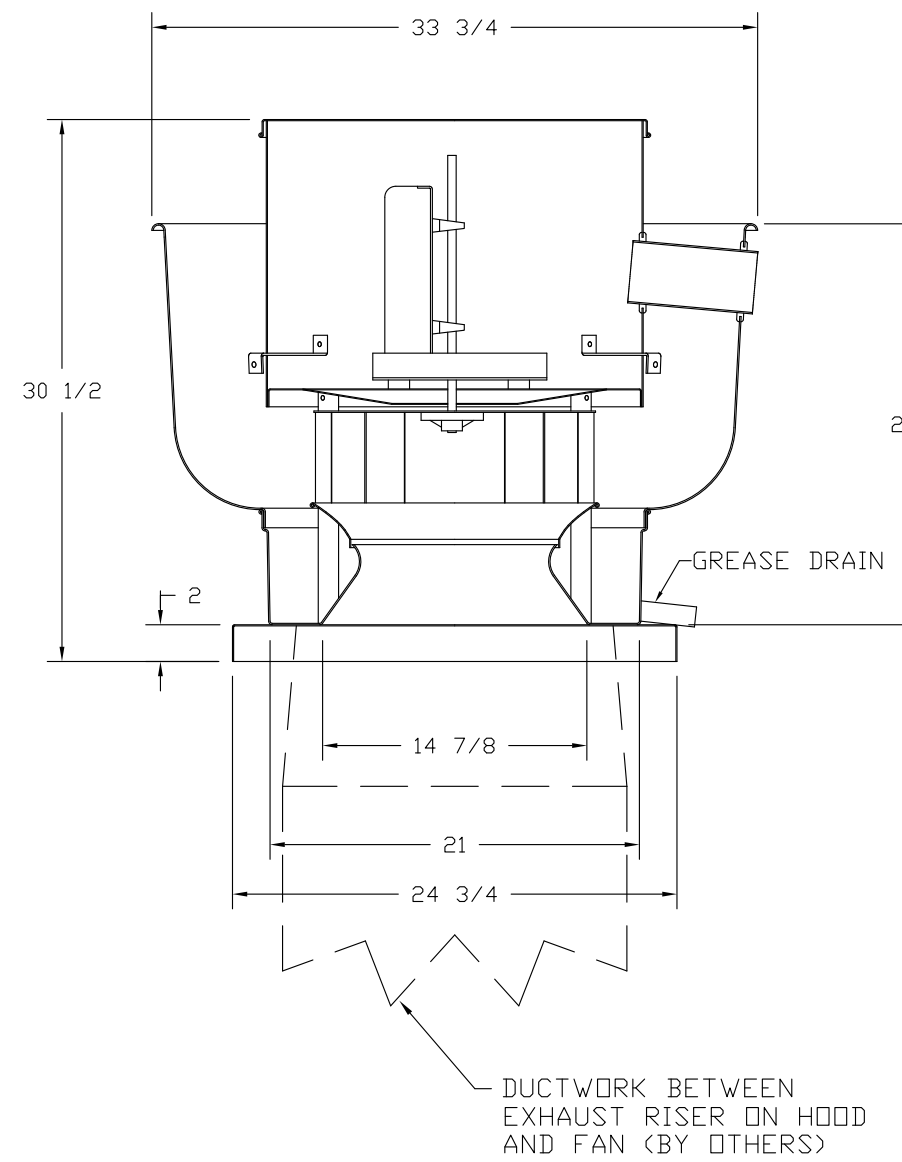
FAN ACCESSORIES

FAN UNIT NO.	TAG	EXHAUST				SUPPLY		
		GREASE CUP	GRAVITY DAMPER	WALL MOUNT	SIDE DISCHARGE	GRAVITY DAMPER	MOTORIZED DAMPER	WALL MOUNT
1		YES						
2		YES						

CURB ASSEMBLIES

NO.	IN FAN	WEIGHT	ITEM	SIZE
1	# 1	36 LBS	Curb	23.000"W x 23.000"L x 20.000"H Vented Hinged
2	# 2	36 LBS	Curb	23.000"W x 23.000"L x 20.000"H Vented Hinged
3	# 3	42 LBS	Curb	31.000"W x 31.000"L x 20.000"H

FAN #1 NCA14FA - EXHAUST FAN



FEATURES:

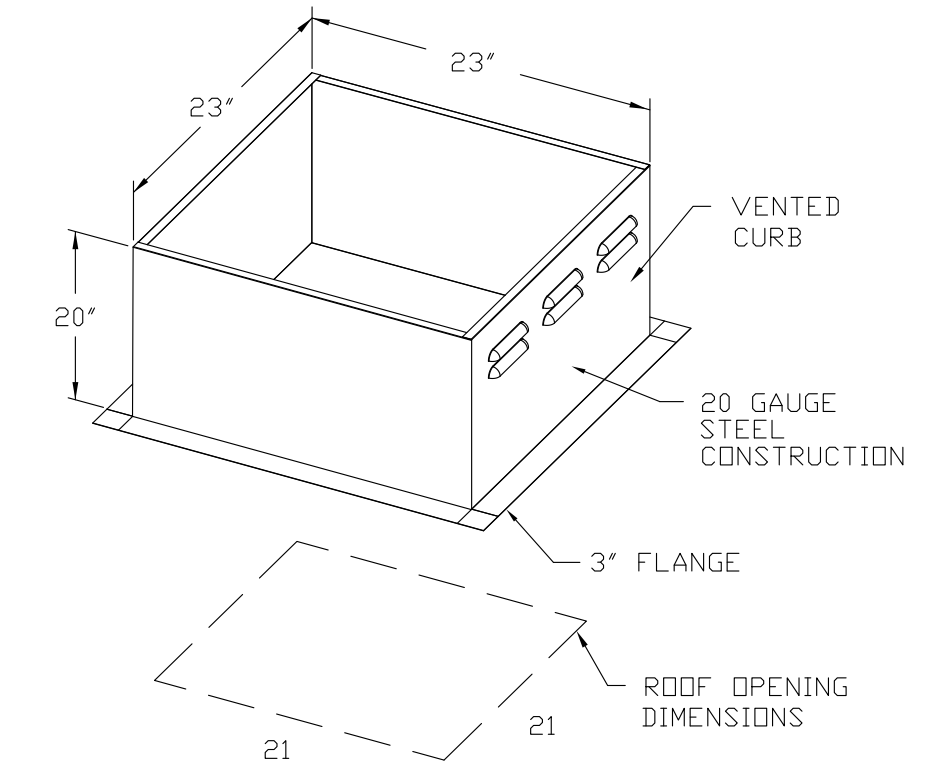
- ROOF MOUNTED FANS
- RESTAURANT MODEL
- UL705 AND UL762
- AMCA SOUND AND AIR CERTIFIED
- WIRING FROM MOTOR TO DISCONNECT SWITCH
- WEATHERPROOF DISCONNECT
- HIGH HEAT OPERATION 300°F (149°C)
- GREASE CLASSIFICATION TESTING

NORMAL TEMPERATURE TEST
EXHAUST FAN MUST OPERATE CONTINUOUSLY WHILE EXHAUSTING AIR AT 300°F (149°C) UNTIL ALL FAN PARTS HAVE REACHED THERMAL EQUILIBRIUM, AND WITHOUT ANY DETERIORATING EFFECTS TO THE FAN WHICH WOULD CAUSE UNSAFE OPERATION.

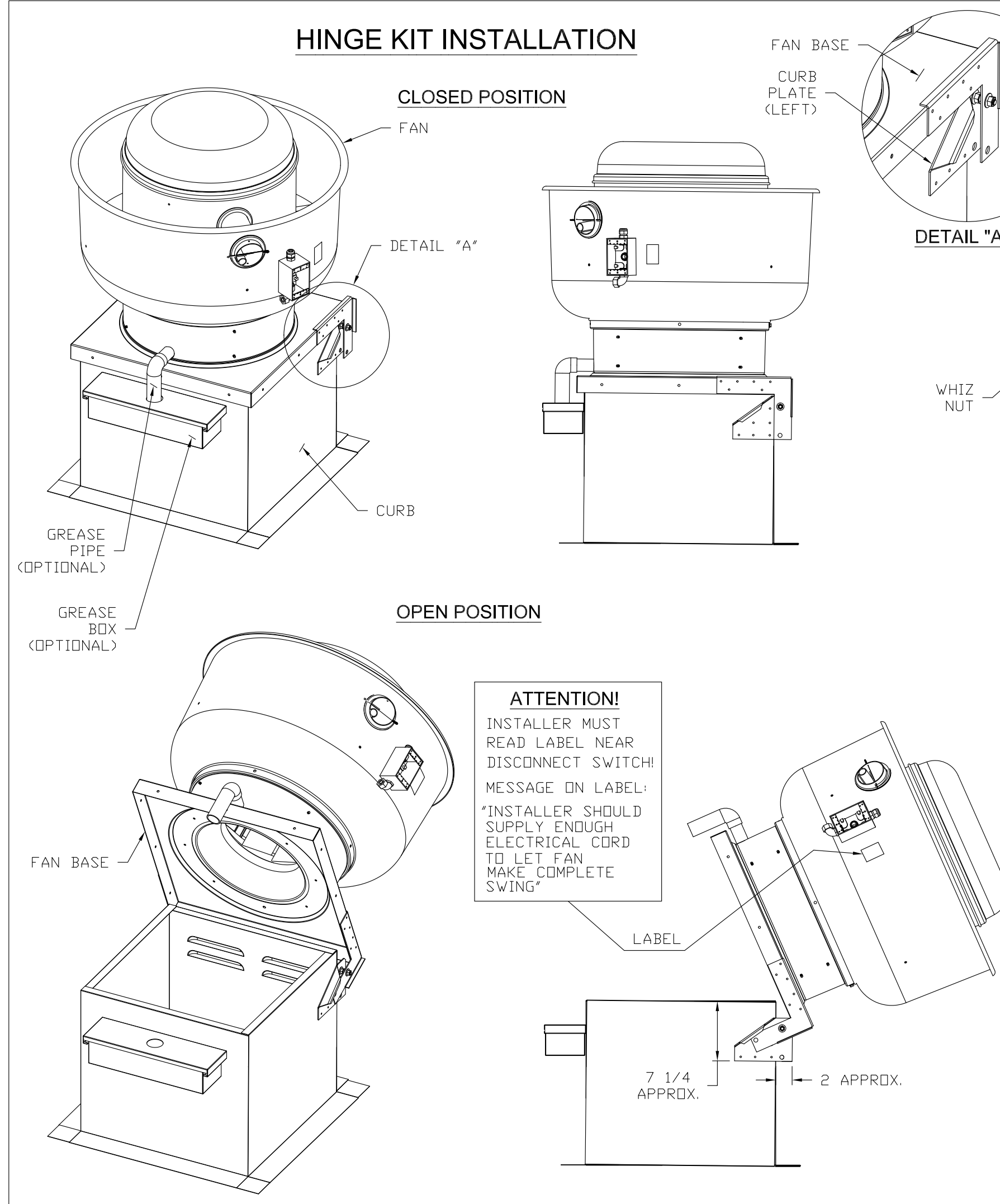
ABNORMAL FLARE-UP TEST
EXHAUST FAN MUST OPERATE CONTINUOUSLY WHILE EXHAUSTING BURNING GREASE VAPORS AT 600°F (316°C) FOR A PERIOD OF 15 MINUTES WITHOUT THE FAN BECOMING DAMAGED TO ANY EXTENT THAT COULD CAUSE AN UNSAFE CONDITION.

OPTIONS

- GREASE BOX



HINGE KIT INSTALLATION

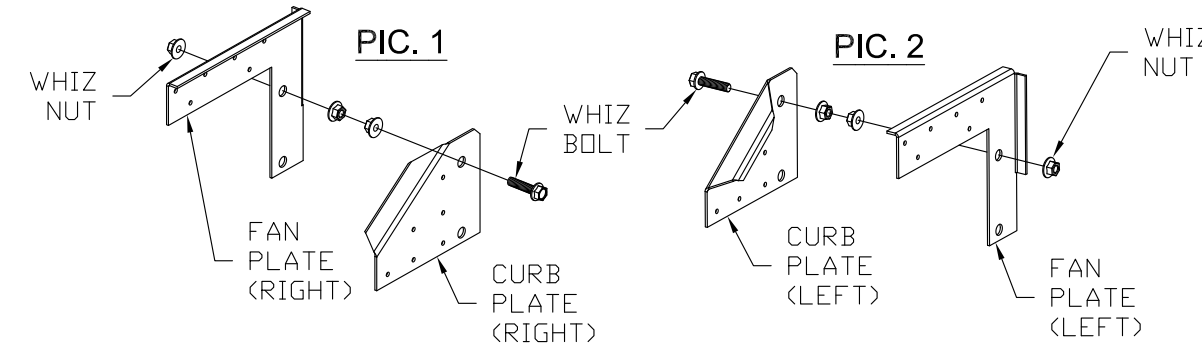


PARTS INCLUDED

- 2 - FAN PLATES (LEFT & RIGHT)
- 2 - CURB PLATES (LEFT & RIGHT)
- 2 - WHIZ BOLTS
- 6 - WHIZ NUTS
- SHEET METAL SCREWS
- 24 - # 14 X 3/4" SCREWS

HINGE KIT FIELD INSTALLATION

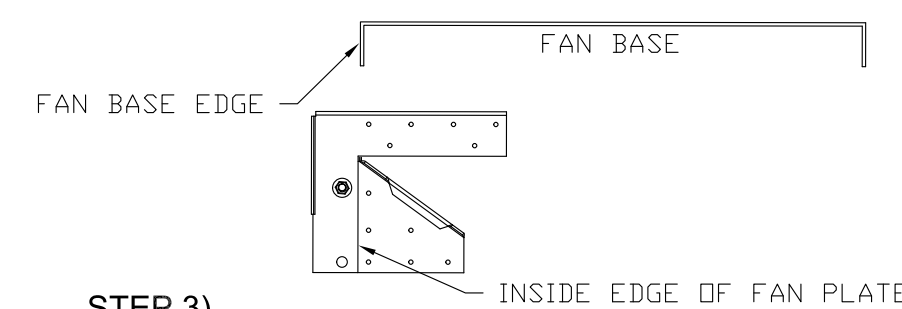
STEP 1)
ASSEMBLE FAN PLATE WITH CURB PLATE AS SHOWN ON PIC. 1 AND PIC. 2 (IF PARTS ARE NOT ASSEMBLED).



STEP 2)

SEE DETAIL "A" FOR POSITIONING FAN PLATE ON FAN BASE. LINE UP FAN BASE EDGE TO INSIDE EDGE OF FAN PLATE AS SHOWN ON PIC. 3.

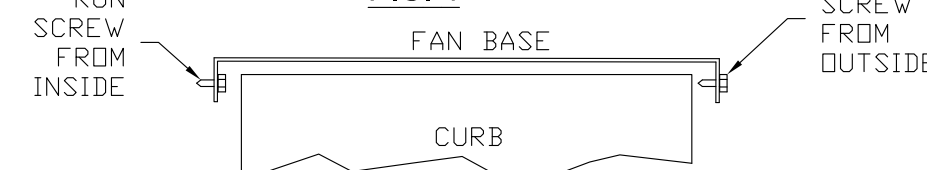
PIC. 3



STEP 3)

SCREW THE FAN PLATE TO THE FAN BASE USING (12) # 14 X 3/4" LG. SHEET METAL SCREWS. NOTE: IF THE SCREWS HIT THE CURB, THEN RUN THE SCREWS FROM INSIDE THE FAN BASE, ALWAYS BE SURE THAT SCREWS DO NOT INTERFERE WITH CURB WHEN FAN SWINGS SEE PIC. 4.

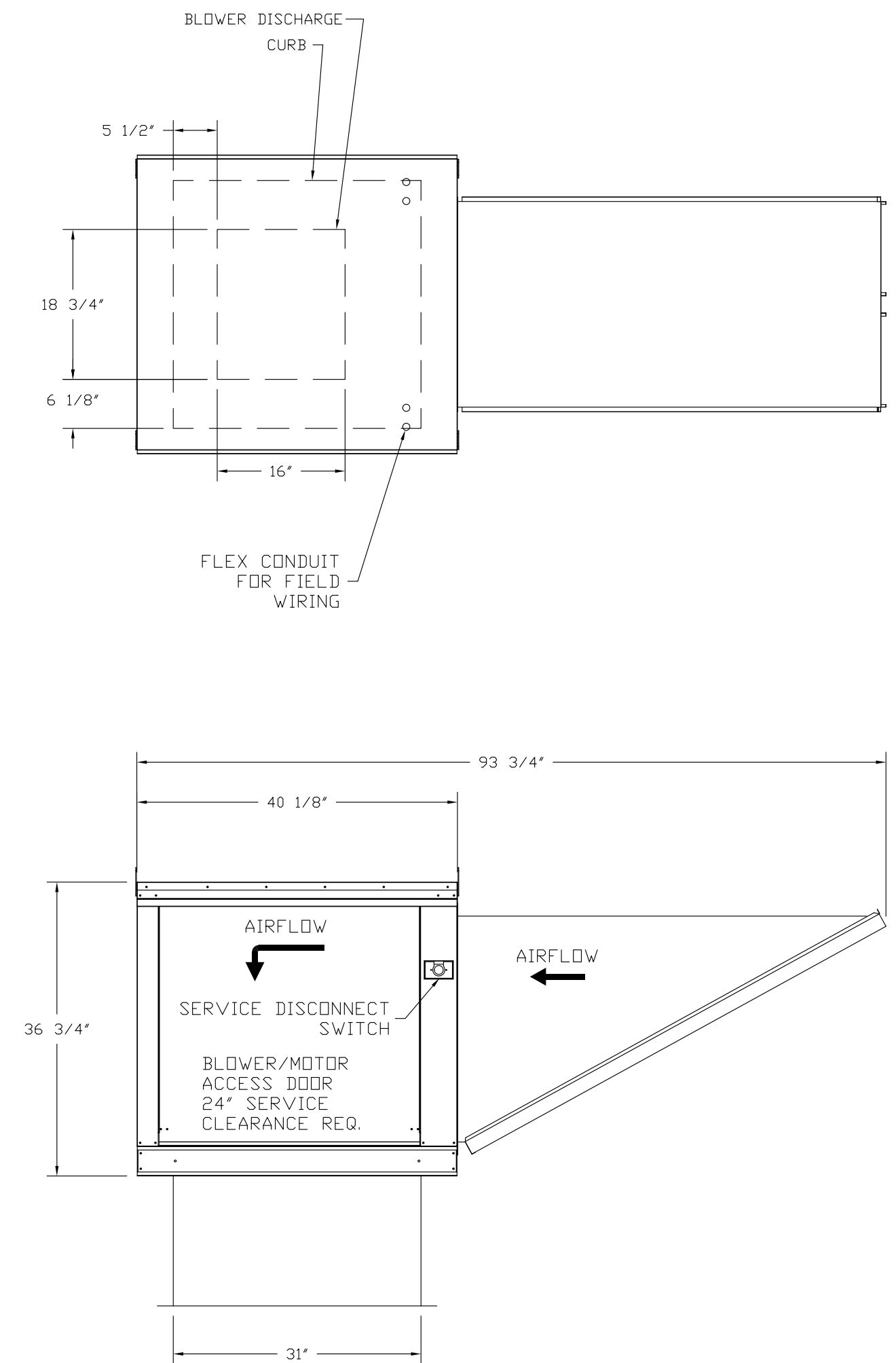
PIC. 4



STEP 4)

SCREW THE CURB PLATE TO THE CURB USING (12) # 14 X 3/4" LG. SHEET METAL SCREWS. TIGHTEN NUT AND BOLT ASSEMBLY, ENSURE FAN SWINGS PROPERLY.

- FAN #3 A2-G15 - SUPPLY FAN
1. UNTEMPERED SUPPLY UNIT WITH 15" BLOWER IN SIZE #2 HOUSING
 2. INTAKE HOOD WITH EZ FILTERS
 3. DOWN DISCHARGE - AIR FLOW RIGHT -> LEFT



REVISIONS

DESCRIPTION	DATE



Monterrey - Monroe, NC
MONROE, NC, 28110

DATE: 7/28/2014

DWG.#: 2098056

DRAWN BY: EJJ-50

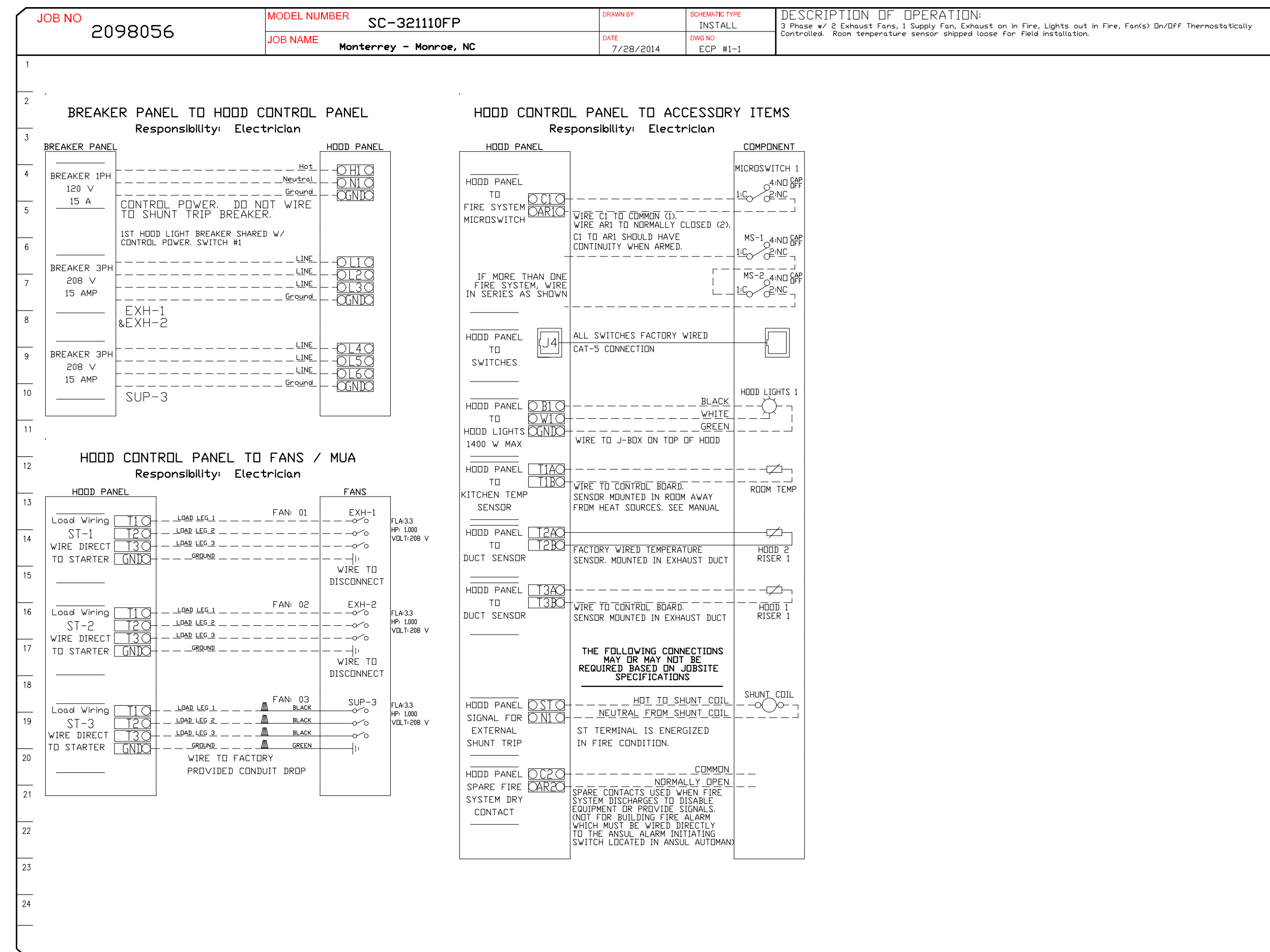
SCALE: 3/4" = 1'-0"

FAN

SHEET NO. 2

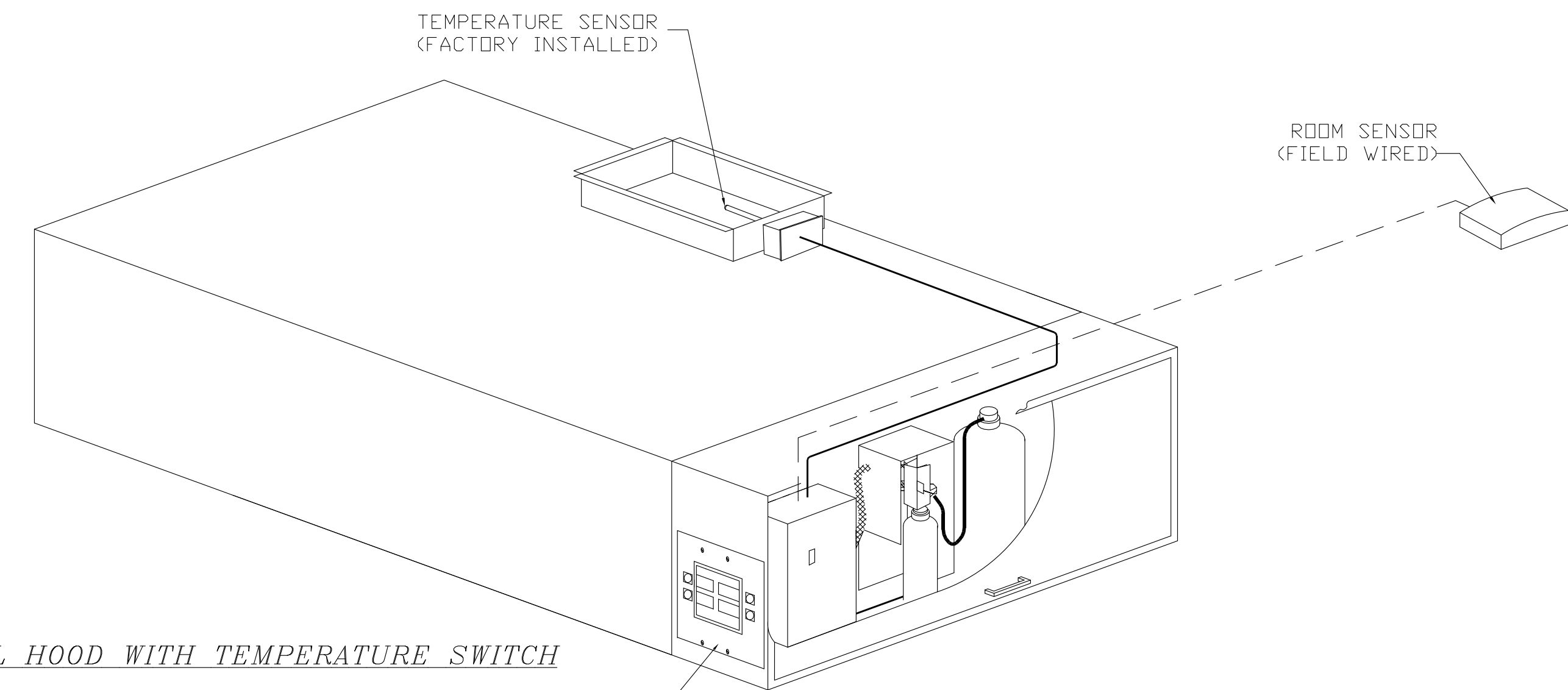
ELECTRICAL PACKAGES - Job#2098056

NO.	TAG	PACKAGE #	LOCATION	SWITCHES		OPTION	FANS CONTROLLED				
				LOCATION	QUANTITY		TYPE	Ø	H.P.	VOLT	FLA
1		SC-321110FP	Utility Cabinet Right	Utility Cabinet Right	1 Light	Smart Controls Thermostatic Control	Exhaust	3	1,000	208	3.3
				Hood # 2	1 Fan		Exhaust	3	1,000	208	3.3
							Supply	3	1,000	208	3.3

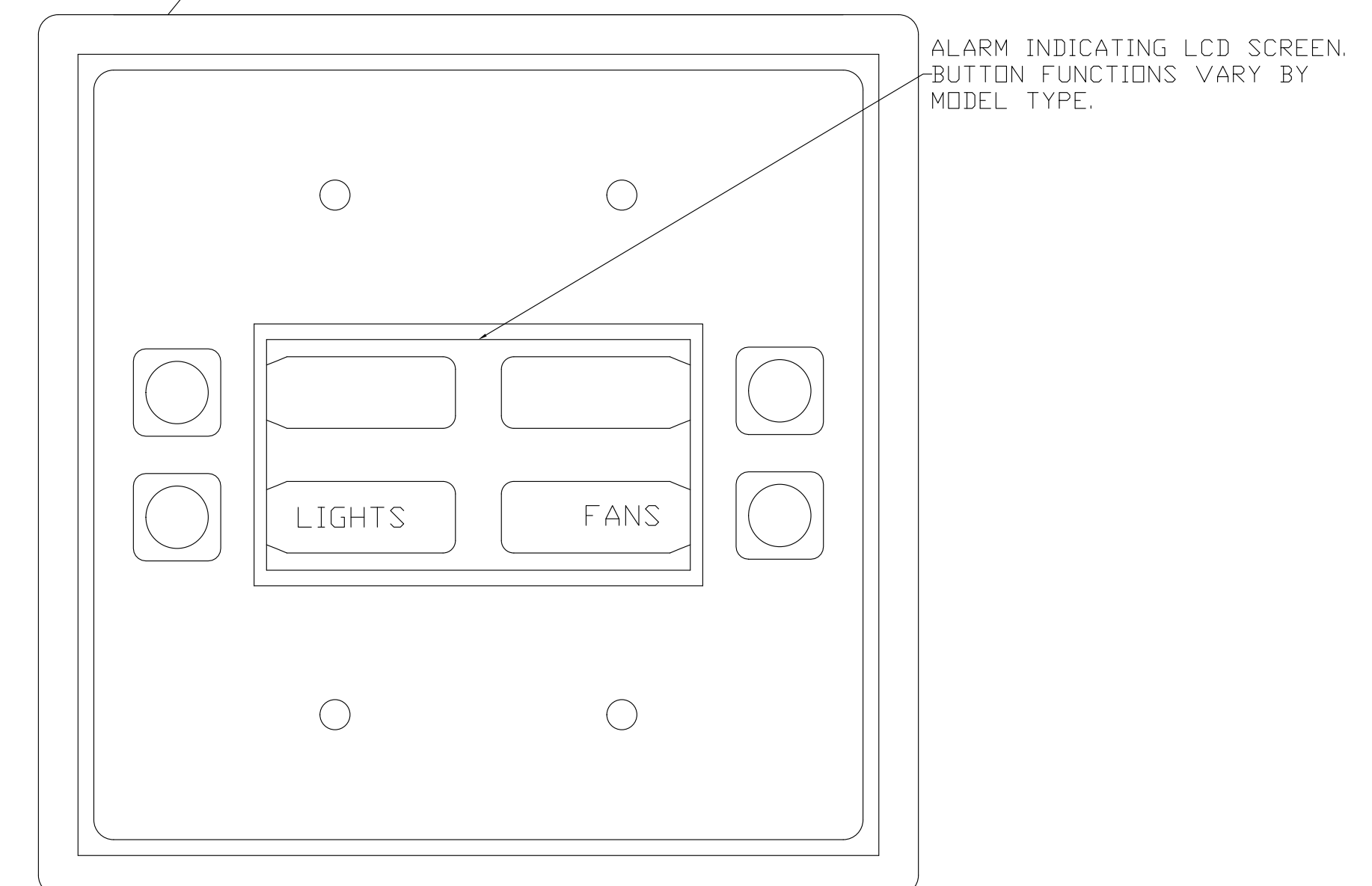


TEMPERATURE SENSOR INTERLOCK

The Temperature Sensor Interlock option complies with IMC 2006 507.2.1.1 and NFPA 96 11.1.1 by interlocking with cooking appliances through means of a heat sensor to automatically activate exhaust fans during cooking operations.



TYPICAL HOOD WITH TEMPERATURE SWITCH



REVISIONS	
DESCRIPTION	DATE

www.captiveaire.com
Atlanta Office
4501 Circle 75 Pkwy, Suite E-5280, Atlanta, GA, 30339 PHONE: (800) 882-6626 FAX: (919) 227-5954 EMAIL: reg50@captiveaire.com

Monterrey - Monroe, NC
MONROE, NC, 28110

DATE: 7/28/2014

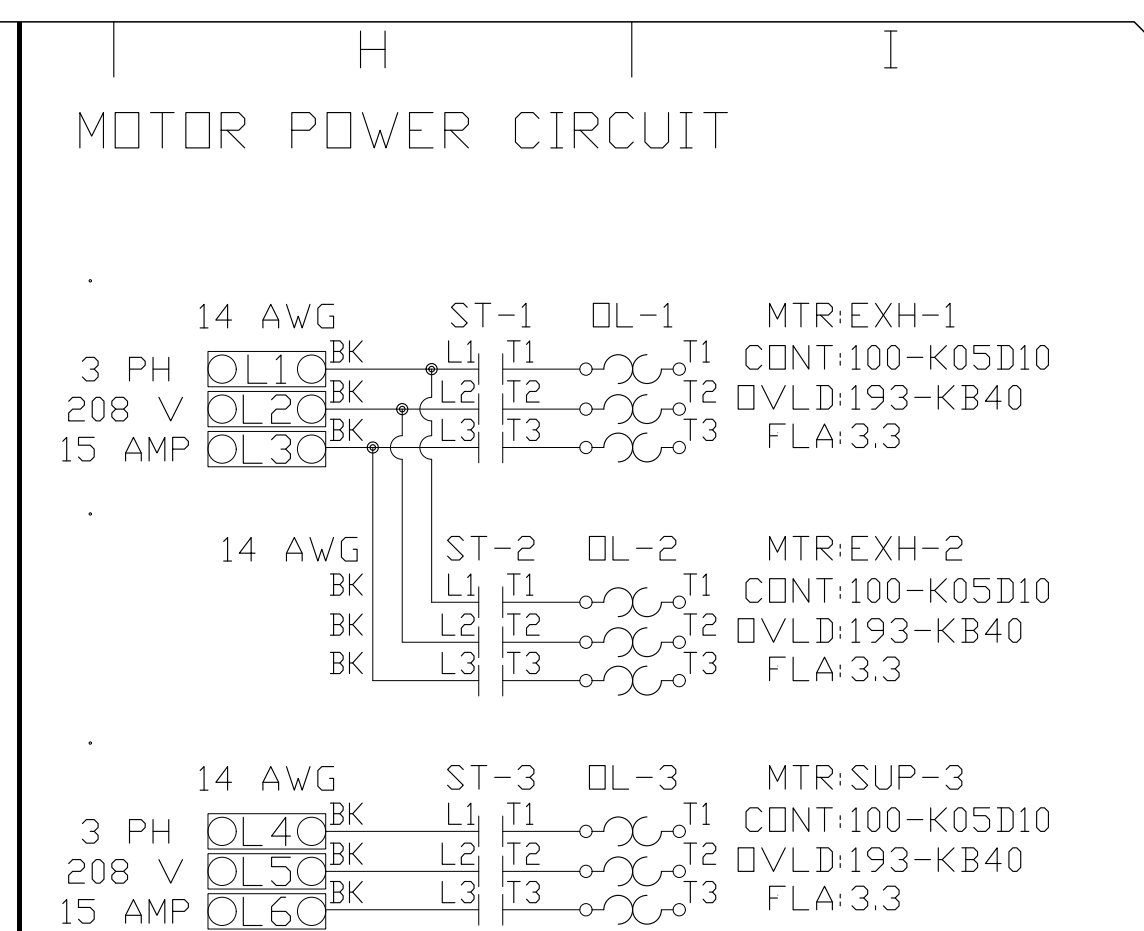
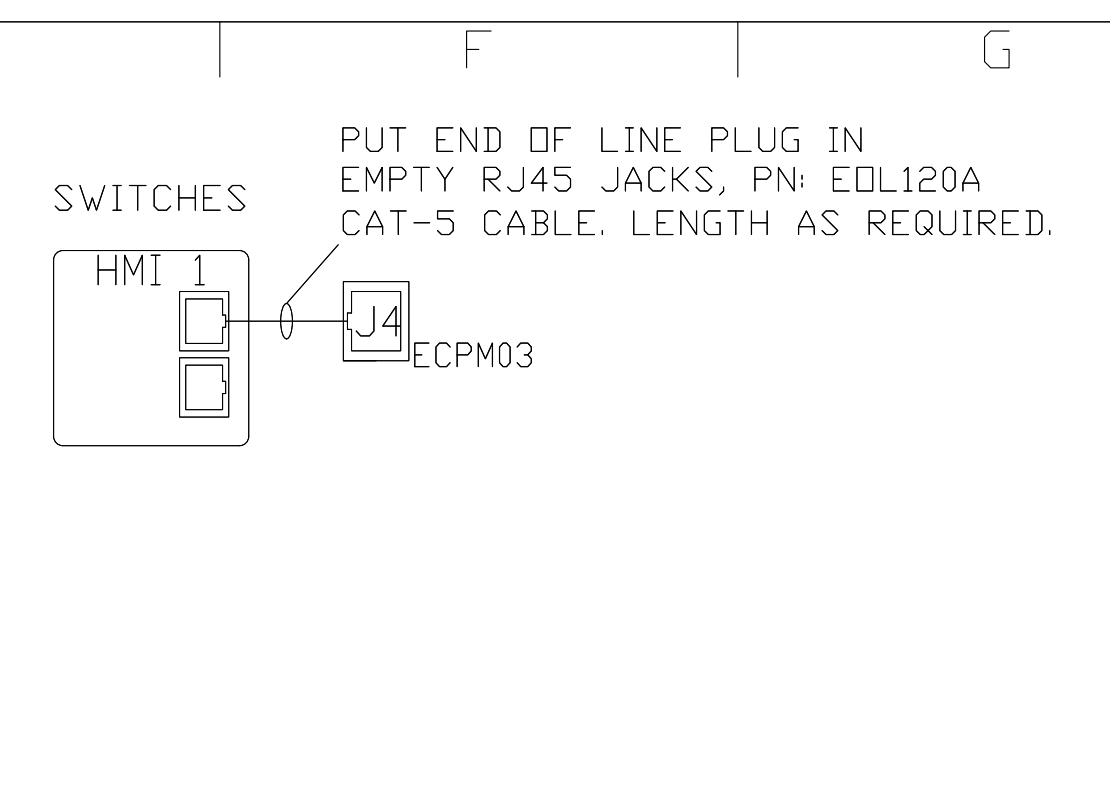
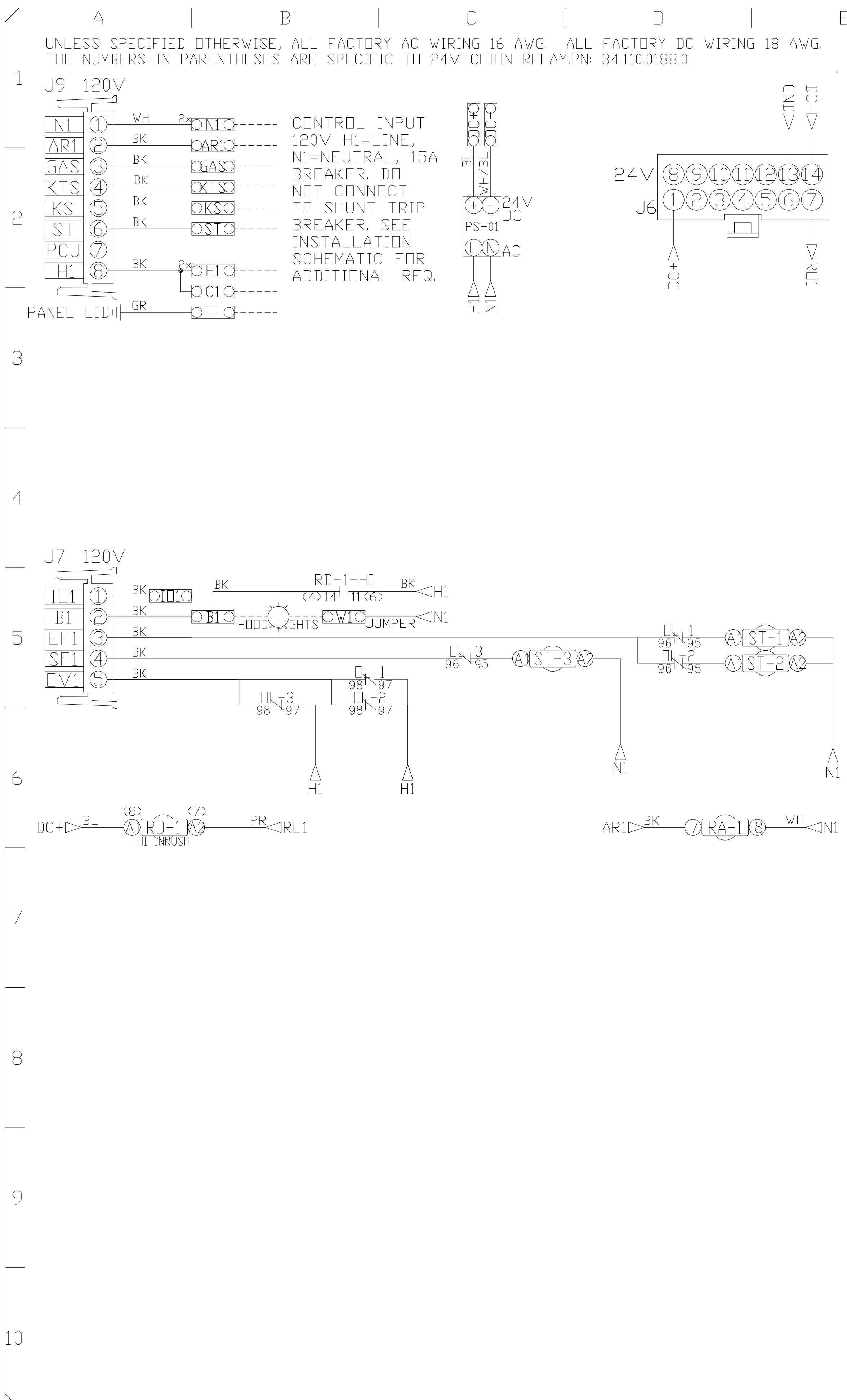
DWG.#: 2098056

DRAWN BY: EJJ-50

SCALE: 3/4" = 1'-0"

CONTROLS

SHEET NO. 3



FACTORY WIRING SCHEMATIC CIRCUIT BOARDS

ECPM03 Rev. 1.32
HMI Rev. 1.06

RA-x 120 VAC RELAY	RD-x 24 VDC RELAY
NO 4 3	14 NO
NC 2 1	12 NC
COIL 8 7	+A1 A2 COIL
COM 6 5	11 COM

COMPONENT LIST

LABEL	DESCRIPTION
ST-x	Starter PN:varies
OL-x	Overload PN:varies
C-x	Contactar PN:varies
PS-1	Power Sup. 24VDC PN:BR-15-24
RA-x	120V Relay DPDT PN:34.110.0184.0
RD-x-HI	24VDC High Inrush PN:788-324-High-In.
TS-x	Duct Thermostat PN:A/CP-PD-T4*-EXPL

LEGEND

----- FIELD WIRING
————— FACTORY WIRING

BK- BLACK YW- YELLOW
BL- BLUE GY- GREY
BR- BROWN PR- PURPLE
OR- ORANGE RD- RED
WH- WHITE
OR/BL- OR/BL STRIPE
BL/RD- BL/RD STRIPE
RD/GN- RD/GN STRIPE
WH/BL- WH/BL STRIPE



JOB NAME
Monterrey - Monr...

DRAWING TITLE
SC-321110FP

DESCRIPTION OF OPERATION
3 Phase w/ 2 Exhaust Fans, 1 Supply Fan, Exhaust on in Fire, Lights out in Fire, Fan(s) On/Off Thermostatically Controlled. Room temperature sensor shipped loose for field installation.

JOB NO 2098056	DRAWN BY
TYPE FACTORY	DATE 7/28/2014
DWG NO ECP	#1-2

REVISIONS

DESCRIPTION	DATE

4501 Circle 76 Pkwy, Suite E-5280, Atlanta, GA, 30339 PHONE: (800) 882-6626 FAX: (919) 227-5964 EMAIL: reg50@captivesaire.com

www.captivesaire.com

CAPTIVE

Atlanta Office

Monterrey - Monroe, NC
MONROE, NC, 28110

DATE: 7/28/2014

DWG.#:
2098056

DRAWN BY:
EJJ-50

SCALE:
3/4" = 1'-0"

WIRING SCHEMATIC

SHEET NO.
4

14 x 18 x 6 Box

