

UTILITY LEGEND	
---	PROPERTY LINE
---	SAN SEWER PIPE
---	W WATER PIPE
---	IRRIGATION SLEEVE
---	UG-E UNDERGROUND ELECTRIC
---	OH-E OVERHEAD ELECTRIC
---	G NATURAL GAS PIPE
---	ST STORM SEWER ROOF LEADER
---	STORM SEWER PIPE
○	SANITARY CLEANOUT
○	GREASE TRAP
○	WATER METER
○	BACKFLOW PREVENTER
○	WATER VALVE

REFER TO SHEET C0.2 FOR NOTES.
REFER TO SHEET C5.3 FOR CITY OF LANCASTER PUBLIC WORKS DETAILS.

CITY OF LANCASTER PUBLIC WORKS WATER SEWER NOTES
ALL WATER AND SEWER TAP & SUPPLIES WILL BE INSTALLED BY THE DEVELOPER PER CITY OF LANCASTER

- WATER PARTS**
- NO COPPER LINES.
 - IPS SID7 HDPE BLUE PIPE ¾ OR 1" SOFT ROLL SERVICE LINE
 - ¾" OR 1" LONG YOKE BOX LYL161-233-U-NA-T-NL STYLE (CAST IRON STRETCH BOX WITH PLASTIC UPPER AND PLASTIC LID WITH MXU MOUNT (MUELLER OR FORD)
 - ¾" MALE INSTANTITE FC8633UNL
 - 6" BY ¾" TAPPING SADDLE R202N076031 OR 2" BY ¾" TAPPING SADDLE -R202N05031
 - ¾" CORPORATION STOP MH150005NF
 - WITH TRACK WIRE WITH WATER LINE
 - 6-INCH DI MJ RW OL GATE VLV U/A MUELLER GATE VALVE
 - C-900 PVC PIPE OR DIP 200 PSI
 - ALL STAINLESS TAPPING SADDLE
 - NO 1.5, 2.5 OR 3 INCH MAIN WATER LINES
 - NO PVC FITTING
 - ALL FITTING MUST BE BRASS OR STAINLESS
 - HYDRANT MUELLER OR AMERICAN DARLING WITH STORZ FITTING
 - 4.5 STANDARD HYDRANT OPEN LEFT, IN YELLOW, FRONT NOZZLE CAP 5-1/4 & 2.5 SIDE CAPS CONNECTION WITH GATE VALVE
 - ALL CONCRETE METER VAULT MUST HAVE FLOOR DRAIN

- SEWER PARTS**
- 4-INCH SEWER TAPS MADE BY THE DEVELOPER, A 4-INCH CLEANOUT WITH A SWEEPING WYE AT THE PROPERTY LINES SWEEPING TOWARD CITY MAIN LINE WITH SCHEDULE 40 PVC PIPE.
 - 4" SCH40 DWV COMBO WYE HXH / SWEEPING WYE
 - 4" CB SEWER SDL UNIV BRANCH F/6.27-14.40 PIPE CB-480UN / SEWER TAPPING SADDLE
 - 4 PVC SWR RH THRD CO PLUG / CLEANOUT ADAPTER PLUG
 - 4 PVC DWV FEM ADPT / CLEANOUT ADAPTER
 - ALL SEWER PIPE AND FITTING MUST BE SHCEDULE 40 PVC (ALL PVC PIPE AND FITTING MUST BE PRIMER AND GLUE FOR LATERAL
 - MAIN SEWER LINES SDR35 PVC OR DIP (DIP MUST BE CHEMICAL RESISTANCE COATING
 - ALL MANHOLE SECTIONS SHALL CONFORM TO ASTM-478 LATEST REVISION PRECAST MANHOLE WITH CO-POLYMER POLYPROPYLENE STEEL REINFORCED STEPS MEETING THE LATEST VERSION OF ASTM-478 & MANHOLE FRAMES AND COVERS DESIGNED FOR HEAVY TRAFFIC WEIGHING NOT LESS THAN 310 LBS AND SHALL BE PROOF LOAD TESTED TO HOLD A 40,000 PROOF LOAD AASHTO M306-07 APPROVED FRAMES AND COVER. COVER BE INTER-CHANGEABLE WITH ANY FRAMES CITY OF LANCASTER. LID STAMP CAN BE STANDARD

METER AT FORTLINE ROCKHILL SC
ALL METERS SHOULD BE KAMSTRUP METER READING IN 100 GALLONS
KAMSTRUP FLOWIG R 3200 02-L-02-D-1-8H-8XX (17-INCH) READ IN 100 GALLON AND THE 2-INCH METER MUST BE INSTALLED IN A 2-INCH YOKE SETTER W/A BYPASS. ALL OTHER METERS LARGER SHOULD BE INSIDE VAULT W/FLOOR DRAIN.
DAVID HLADIS WATERWORKS METER SPECIALIST: DAVID.HLADIS@FORTLINE.COM
LONG YOKE BOX LYL161-233-U-NA-STYLE - ¾ METER I F 5/8X3/4 KAMSTRUP METER 100 USG OR 1-INCH M520M-F1-TC-X-E-MI 1P PIT W/D/LD
ALL METER ¾ & 1" METER MUST BE CASTIRON STRETCH BOX WITH PLACTICE UPPER AND PLASTIC LID W/MOUNT



701 BROCKINGTON LN
FLORENCE, SC 29501
PHONE: 615-517-0996
EMAIL: DUSTIN@P3EG.COM

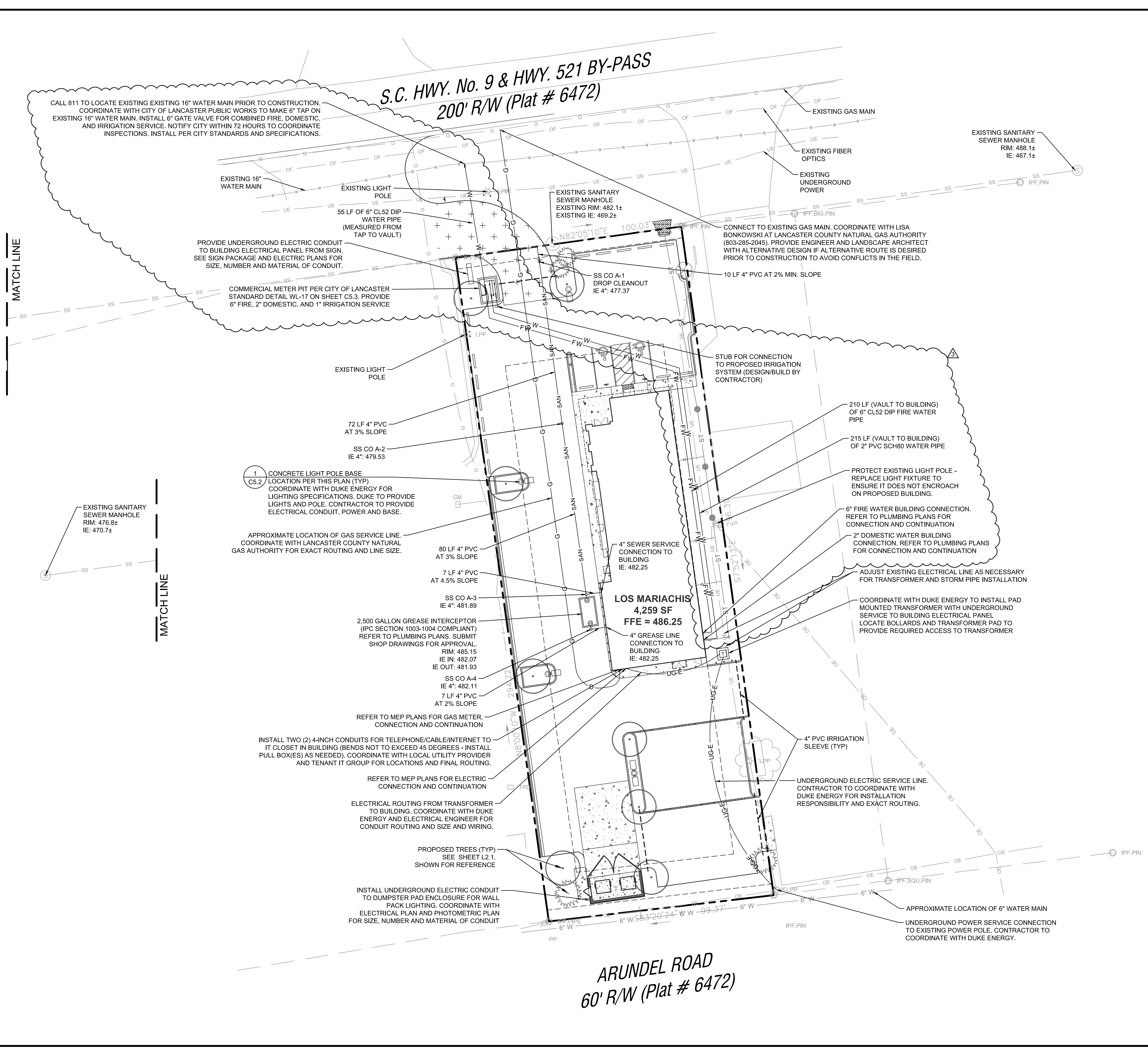
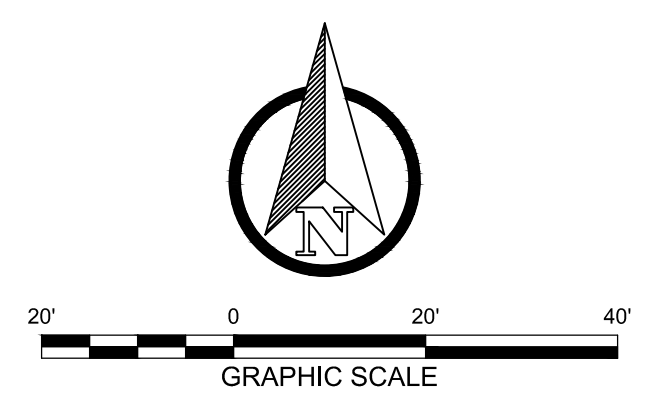
LOS MARIACHIS
1229 HIGHWAY 9 BYPASS WEST
LANCASTER, SOUTH CAROLINA

ORIGINAL ISSUE DATE:	03/26/2024
REVISIONS:	
△ CITY COMMENTS	07/16/2024
△ BUILDING AREA	07/25/2024
△ FIRE SERVICE	10/18/2024

PROJ. NO.: 23001

UTILITY PLAN

C3.1



S.C. HWY. No. 9 & HWY. 521 BY-PASS
200' R/W (Plat # 6472)

ARUNDEL ROAD
60' R/W (Plat # 6472)

LOS MARIACHIS
4,259 SF
FFE = 486.25

C:\Users\DustinBriggs\OneDrive - P3 Engineering Group\Production\23123001 - DPSC Lancaster\CAD\Sheets\23001 - C3.1 UTIL.dwg

IF THIS SHEET DOES NOT MEASURE 24"x36", IT HAS BEEN ENLARGED OR REDUCED. PLEASE ADJUST SCALE ACCORDINGLY.