

WALL RATING LEGEND	
	1-HOUR FIRE / SMOKE BARRIER (1-HR. F/S W)
	1-HOUR FIRE BARRIER WALL (1-HR. FB W) REQUIRED BY TABLE 509 NC95C
	2-HOUR RATED FIREWALL / (2-HR. F.W.) SMOKE BARRIER
	SMOKE RESISTANT INCIDENTAL WALL (SR W)

A. OCCUPANCY:  
 PRIMARY: I-2 (38 BED NURSING FACILITY)  
 ACCESSORY: A-2 (DINING ROOM/LIVING ROOMS, ETC.) / BUSINESS (OFFICES) / S-1 (MODERATE STORAGE)

OCCUPANCY CLASSIFICATION:  
 NON-SEPARATED MIXED OCCUPANCY

B. CONSTRUCTION TYPE: TYPE V-A  
 SPRINKLERS: NFPA 13, W/ QUICK RESPONSE HEADS  
 BUILDING HEIGHT: ONE STORY

C. CONSTRUCTION DESCRIPTIONS:

- FLOORS - 4" CONCRETE SLAB ON GRADE.
- EXTERIOR WALLS - 2" X 6" WOOD STUDS W/ 5/8" F.C. G.W.B. ON INSIDE OF STUDS W/ 1/16" O.S.B. ON EXTERIOR SIDE. U.L. ASSEMBLY U-356 1-HR. RATED.
- INTERIOR BEARING WALLS - 2" X 4" WOOD STUDS W/ 5/8" FIRECODE GUB ON EACH SIDE. U.L. ASSEMBLY U-305 1-HR. RATED.
- INTERIOR NON-BEARING WALLS - 2" X 4" WOOD STUDS W/ 5/8" FIRECODE GUB ON EACH SIDE. U.L. ASSEMBLY U-305 1-HR. RATED.
- FIRE BARRIER WALLS - 2" X 4" WOOD STUDS W/ 5/8" FIRECODE GUB ON EACH SIDE. U.L. ASSEMBLY U-305 1-HR. RATED.
- SMOKE BARRIER WALLS - 2" X 4" WOOD STUDS W/ 5/8" FIRECODE GUB ON EACH SIDE. U.L. ASSEMBLY U-305 1-HR. RATED.
- 2-HR. MASONRY FIREWALL / SMOKE BARRIER - 12" 75% SOLID CMU. U.L. ASSEMBLY U-301 2-HR. RATED.
- CANOPY / PORCH COLUMNS - DOUBLE LAYER 5/8" FIRECODE GUB WRAP / U.L. ASSEMBLY X-528 1-HR. RATED.
- CANOPY / PORCH BEAMS - DOUBLE LAYER 5/8" FIRECODE GUB WRAP / U.L. BEAM ASSEMBLY N-502 1-HR. RATED.
- INTERIOR COLUMNS - DOUBLE LAYER 5/8" FIRECODE GUB WRAP / U.L. ASSEMBLY X-528 1-HR. RATED.
- INTERIOR BEAMS - DOUBLE LAYER 5/8" FIRECODE GUB WRAP / U.L. BEAM ASSEMBLY N-502 1-HR. RATED.
- CEILING - MANUFACTURED WOOD TRUSSES W/ PLYWOOD DECK AND FIBERGLASS CLASS 'A' SHINGLES / FIRE PROTECTION TO BE TWO LAYERS 5/8" FIRECODE GUB CEILING THROUGH-OUT / CEILING HANG REGISTER OPENINGS TO BE PROTECTED W/ RADIATION DAMPERS / GYPSUM ASSOCIATION RC 2602 - 1-HR. RATED.

D. ALLOWABLE AREA: (TABLE 506.2)  
 I-2 (V-A): 38,000 SF. (SPRINKLED, 1-STORY)  
 A-2 (V-A): 46,000 SF. (SPRINKLED, 1-STORY)  
 S-1 (V-A): 12,000 SF. (SPRINKLED, 1-STORY)  
 S-1 (V-A): 56,000 SF. (SPRINKLED, 1-STORY)  
 I-2 IS THE MOST RESTRICTIVE LIMITATION OF AREA FOR THE CONSTRUCTION TYPE.

E. PROPOSED BUILDING AREA:  
 BUILDING # 1 = 31,023 SF. IS LESS THAN 38,000 SF. ALLOWED  
 BUILDING # 2 = 14,183 SF. IS LESS THAN 38,000 SF. ALLOWED  
 BUILDING # 3 = 29,975 SF. IS LESS THAN 38,000 SF. ALLOWED  
**TOTAL BUILDING SF. = 75,181 SF.**

F. SPECIAL OCCUPANCY REQUIREMENTS (CHAPTER 4) - 401 GROUP I-2:

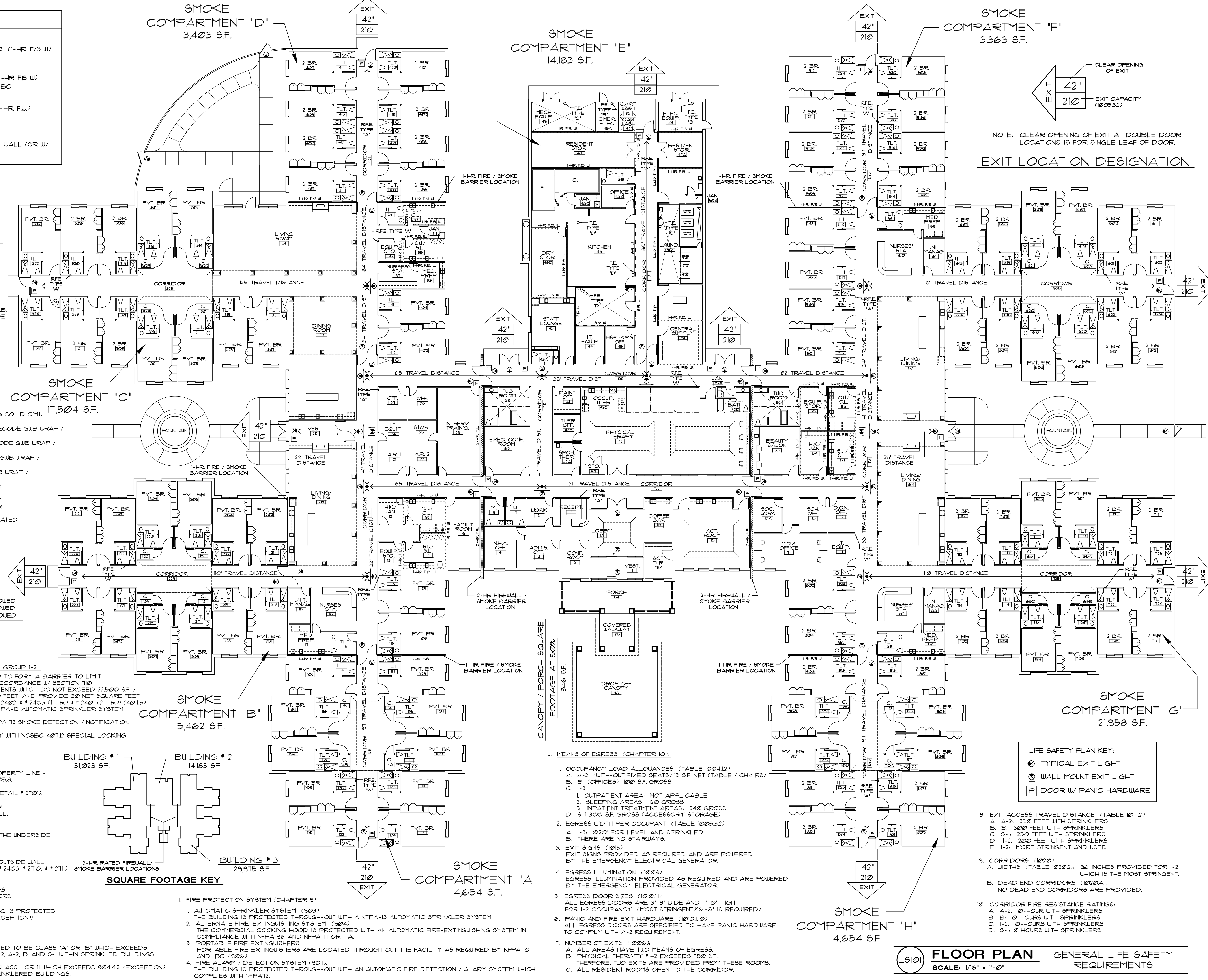
- CORRIDOR WALLS ARE NON-RATED AND CONSTRUCTED TO FORM A BARRIER TO LIMIT THE TRANSFER OF SMOKE (DETAIL # 2404) (401.3) IN ACCORDANCE W/ SECTION 110.
- THE BUILDING IS SUB-DIVIDED INTO SMOKE COMPARTMENTS WHICH DO NOT EXCEED 22,500 SF. / HAVE TRAVEL DISTANCES WHICH DO NOT EXCEED 200 FEET, AND PROVIDE 30 NET SQUARE FEET OF REFUSE ON EA. SIDE OF ADJACENT COMP. (D.T.L.S. # 2403 (1-HR.) # 2401 (2-HR.) (401.5))
- THE BUILDING IS PROTECTED THROUGH-OUT WITH AN NFPA-13 AUTOMATIC SPRINKLER SYSTEM AND QUICK RESPONSE HEADS (401.2)
- THE BUILDING IS PROTECTED THROUGH-OUT WITH AN NFPA 12 SMOKE DETECTION / NOTIFICATION AUTOMATIC FIRE ALARM SYSTEM (401.1 AND 401.8)
- ALL MAGNETIC LOCKED EXTERIOR DOORS TO COMPLY WITH NC95C 401.2 SPECIAL LOCKING ARRANGEMENT FOR LICENSED GROUP I-2.

G. FIRE RESISTANT RATED CONSTRUCTION (CHAPTER 7):

- EXTERIOR WALLS (DETAILS # 2603 TYPICAL)
  - PERIMETER OPENINGS ALL EXCEED 30 FEET TO PROPERTY LINE - NO LIMIT ON UNPROTECTED OPENINGS PER TABLE 105.2.
- FIREWALLS (106):
  - FIREWALL CONSTRUCTION IS A 2-HOUR ASSEMBLY (DETAIL # 2101) (TABLE 106.4 NOTE a)
  - FIREWALL TO EXTEND FROM FINISHED FLOOR TO 3'-0" ABOVE ROOF DECK AND 3'-0" BEYOND OUTSIDE WALL.
- FIRE BARRIERS (107):
  - FIRE BARRIERS ARE 1-HOUR ASSEMBLIES.
  - FIRE BARRIERS EXTEND FROM THE FLOOR SLAB TO THE UNDERSIDE OF THE 1-HR. FLOOR / CEILING ASSEMBLY ABOVE.
- SMOKE BARRIERS (110):
  - SMOKE BARRIERS ARE 1-HOUR ASSEMBLIES.
  - SMOKE BARRIERS EXTEND FROM OUTSIDE WALL TO OUTSIDE WALL AND FLOOR SLAB TO ROOF DECK (DETAILS # 2402, # 2403, # 2110, # 2111)
- OPENING PROTECTION (TABLE 116.5):
  - TWO HOUR FIREWALLS; 1 1/2-HOUR RATED DOORS
  - ONE-HOUR FIRE BARRIERS; 3/4-HOUR RATED DOORS
  - ONE-HOUR SMOKE BARRIER; 20 MINUTE RATED DOORS.
- DRAFTSTOPPING:  
 ATTIC DRAFTSTOPPING IS NOT REQUIRED SINCE BUILDING IS PROTECTED WITH AN NFPA 13 SPRINKLER SYSTEM IN ATTIC. (118.4.3 EXCEPTION))

H. INTERIOR FINISHES (CHAPTER 8):

- WALL AND CEILING FINISHES (803)
  - ALL INTERIOR WALL AND CEILING FINISHES ARE SPECIFIED TO BE CLASS 'A' OR 'B' WHICH EXCEEDS TABLE 803.11 REQUIREMENTS FOR OCCUPANCY TYPES I-2, A-2, B, AND S-1 WITHIN SPRINKLED BUILDINGS.
- INTERIOR FLOOR FINISHES (804)
  - ALL INTERIOR FLOOR FINISHES ARE SPECIFIED TO BE CLASS I OR II WHICH EXCEEDS 804.4.2. (EXCEPTION) FOR OCCUPANCY TYPES I-2, A-2, B, AND S-1 WITHIN SPRINKLERED BUILDINGS.



I. FIRE PROTECTION SYSTEM (CHAPTER 9):

- AUTOMATIC SPRINKLER SYSTEM (903)
  - THE BUILDING IS PROTECTED THROUGH-OUT WITH AN NFPA-13 AUTOMATIC SPRINKLER SYSTEM.
- ALTERNATE FIRE-EXTINGUISHING SYSTEM (904)
  - THE COMMERCIAL COOKING HOOD IS PROTECTED WITH AN AUTOMATIC FIRE-EXTINGUISHING SYSTEM IN COMPLIANCE WITH NFPA 96 AND NFPA 11 OR 11A.
- PORTABLE FIRE EXTINGUISHERS
  - PORTABLE FIRE EXTINGUISHERS ARE LOCATED THROUGH-OUT THE FACILITY AS REQUIRED BY NFPA 10 AND IBC (906)
- FIRE ALARM / DETECTION SYSTEM (907)
  - THE BUILDING IS PROTECTED THROUGH-OUT WITH AN AUTOMATIC FIRE DETECTION / ALARM SYSTEM WHICH COMPLIES WITH NFPA 72.

J. MEANS OF EGRESS (CHAPTER 10):

- OCCUPANCY LOAD ALLOWANCES (TABLE 1004.12)
  - A-2 (WITH-OUT FIXED SEATS) 15 SF. NET (TABLE / CHAIRS)
  - B (OFFICES) 100 SF. GROSS
  - I-2
- OUTPATIENT AREA: NOT APPLICABLE
- SLEEPING AREAS: 120 GROSS
- INPATIENT TREATMENT AREAS: 240 GROSS
- S-1 300 SF. GROSS (ACCESSORY STORAGE)
- EGRESS WIDTH PER OCCUPANT (TABLE 1005.3.2)
  - I-2: 0.20' FOR LEVEL AND SPRINKLED
  - THERE ARE NO STAIRWAYS.
- EXIT SIGNS (1013)
  - EXIT SIGNS PROVIDED AS REQUIRED AND ARE POWERED BY THE EMERGENCY ELECTRICAL GENERATOR.
- EGRESS ILLUMINATION (1008)
  - EGRESS ILLUMINATION PROVIDED AS REQUIRED AND ARE POWERED BY THE EMERGENCY ELECTRICAL GENERATOR.
- EGRESS DOOR SIZES (1011)
  - ALL EGRESS DOORS ARE 3'-8" WIDE AND 7'-0" HIGH FOR I-2 OCCUPANCY (MOST STRINGENT 1'-8" IS REQUIRED).
- PANIC AND FIRE EXIT HARDWARE (1010.10)
  - ALL EGRESS DOORS ARE SPECIFIED TO HAVE PANIC HARDWARE TO COMPLY WITH A-2 REQUIREMENT.
- NUMBER OF EXITS (1006)
  - ALL AREAS HAVE TWO MEANS OF EGRESS.
  - PHYSICAL THERAPY # 42 EXCEEDS 150 SF. THEREFORE, TWO EXITS ARE PROVIDED FROM THESE ROOMS.
  - ALL RESIDENT ROOMS OPEN TO THE CORRIDOR.
- EXIT ACCESS TRAVEL DISTANCE (TABLE 1011.2)
  - A-2: 250 FEET WITH SPRINKLERS
  - B: 300 FEET WITH SPRINKLERS
  - S-1: 250 FEET WITH SPRINKLERS
  - I-2: 200 FEET WITH SPRINKLERS
  - I-2: MORE STRINGENT AND USED.
- CORRIDORS (1020)
  - WIDTHS (TABLE 1020.2): 36 INCHES PROVIDED FOR I-2 WHICH IS THE MOST STRINGENT.
  - DEAD END CORRIDORS (1020.4) NO DEAD END CORRIDORS ARE PROVIDED.
- CORRIDOR FIRE RESISTANCE RATINGS:
  - A-2: 0-HOUR WITH SPRINKLERS
  - B: 0-HOURS WITH SPRINKLERS
  - I-2: 0-HOURS WITH SPRINKLERS
  - S-1: 0 HOURS WITH SPRINKLERS

K. LIFE SAFETY PLAN KEY:

- TYPICAL EXIT LIGHT
- WALL MOUNT EXIT LIGHT
- DOOR W/ PANIC HARDWARE

L. SCALE: 1/16" = 1'-0"

**LIBERTY COMMONS**  
**BRIAR CHAPEL**  
 Chatham County, North Carolina

**David R. Polston - Architect**  
 3806 Park Ave. Suite C, Wilmington, NC 28403  
 Architecture Planning Design

138 BED  
 FACILITY

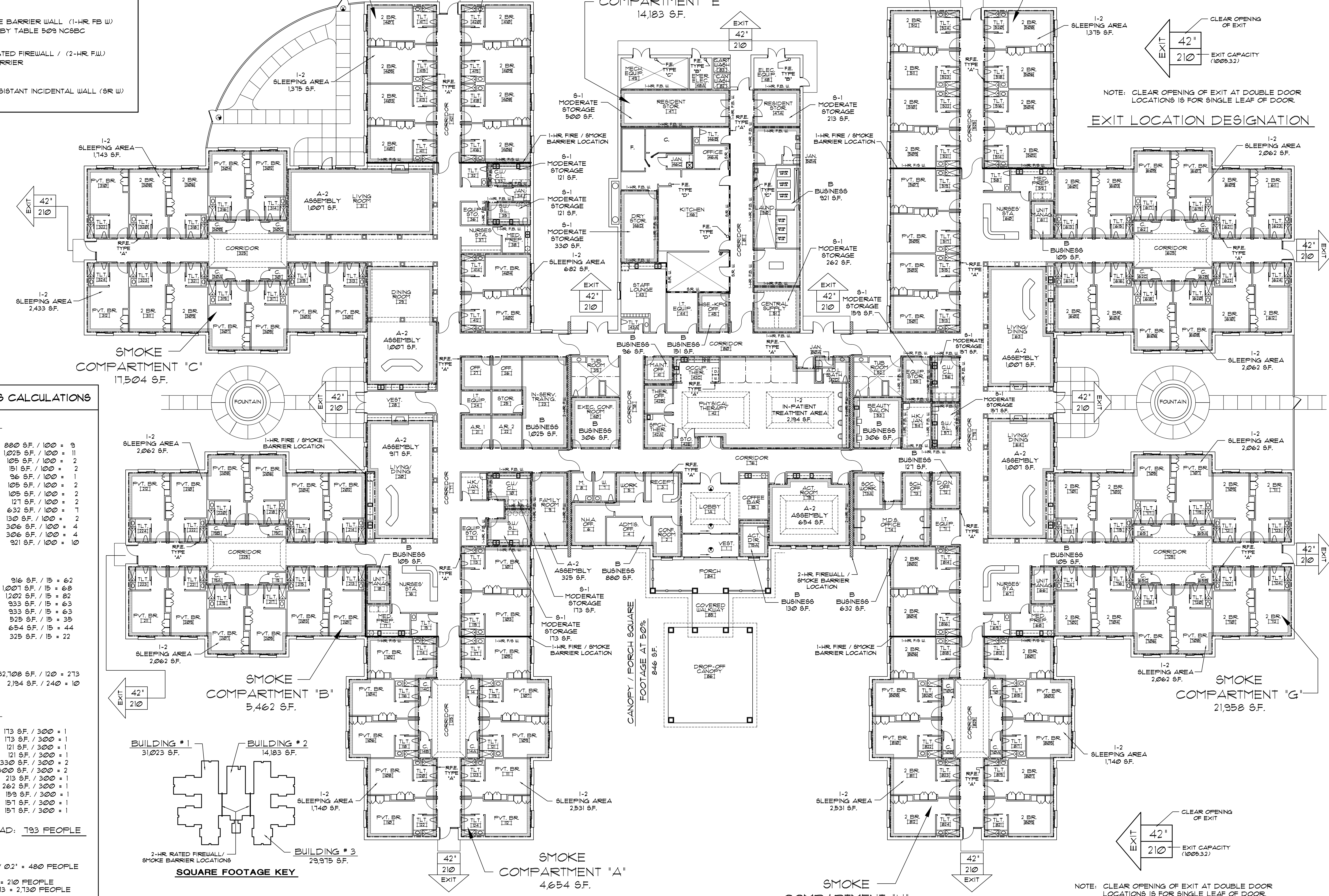
**LS**  
**1**

**FLOOR PLAN** GENERAL LIFE SAFETY REQUIREMENTS

**WALL RATING LEGEND**

	1-HOUR FIRE / SMOKE BARRIER (1-HR. F/S W)
	1-HOUR FIRE BARRIER WALL (1-HR. FB W) REQUIRED BY TABLE 509 NC98C
	2-HOUR RATED FIREWALL / (2-HR. F.W.) SMOKE BARRIER
	SMOKE RESISTANT INCIDENTAL WALL (SR W)

SMOKE COMPARTMENT "D" 3,403 S.F.  
 SMOKE COMPARTMENT "E" 14,183 S.F.  
 SMOKE COMPARTMENT "F" 3,363 S.F.



NOTE: CLEAR OPENING OF EXIT AT DOUBLE DOOR LOCATIONS IS FOR SINGLE LEAF OF DOOR.

EXIT LOCATION DESIGNATION

NOTE: CLEAR OPENING OF EXIT AT DOUBLE DOOR LOCATIONS IS FOR SINGLE LEAF OF DOOR.

EXIT LOCATION DESIGNATION

**OCCUPANCY / EGRESS CALCULATIONS**

**A. BUSINESS OCCUPANCY (B):**

OFFICE GROUP ONE	820 S.F. / 100 = 9
OFFICE GROUP TWO	1,025 S.F. / 100 = 11
UNIT MANAGER # 18	105 S.F. / 100 = 2
HSE-KFG # 45	151 S.F. / 100 = 2
MAINT. OFFICE # 41	96 S.F. / 100 = 1
UNIT MANAGER # 61	105 S.F. / 100 = 2
UNIT MANAGER # 66	105 S.F. / 100 = 2
D.O.N. OFFICE # 12	121 S.F. / 100 = 2
OFFICE GROUP THREE	632 S.F. / 100 = 7
ACT. DIRECTOR # 154	130 S.F. / 100 = 2
BEAUTY SALON # 53	306 S.F. / 100 = 4
EXEC. CONF. ROOM # 40	306 S.F. / 100 = 4
LAUNDRY # 50	921 S.F. / 100 = 10

**B. ASSEMBLY (A-2):**

LIVING / DINING # 20	916 S.F. / 15 = 62
DINING ROOM # 29	1,021 S.F. / 15 = 68
LIVING ROOM # 31	1,202 S.F. / 15 = 82
LIVING / DINING # 63	933 S.F. / 15 = 63
LIVING / DINING # 64	933 S.F. / 15 = 63
LIVING / DINING # 28	525 S.F. / 15 = 35
ACTIVITIES ROOM # 15	654 S.F. / 15 = 44
FAMILY ROOM # 9	325 S.F. / 15 = 22

**C. INSTITUTIONAL (I-2):**

SLEEPING AREAS:	32,708 S.F. / 120 = 273
IN-PATIENT TREATMENT AREA	2,194 S.F. / 240 = 10

**D. MODERATE STORAGE (S-1):**

S.U./S.L. # 10	173 S.F. / 300 = 1
C.U./C.L. # 11	173 S.F. / 300 = 1
C.U./C.L. # 33	121 S.F. / 300 = 1
S.U./S.L. # 35	121 S.F. / 300 = 1
DRY STORAGE # 46D	330 S.F. / 300 = 2
RESID. STOR. # 41	500 S.F. / 300 = 2
RESID. STOR. # 41A	213 S.F. / 300 = 1
CENT. SUPPLY # 51	262 S.F. / 300 = 1
EQUIP. STORAGE # 55	193 S.F. / 300 = 1
C.U./C.L. # 56	151 S.F. / 300 = 1
S.U./S.L. # 51	151 S.F. / 300 = 1

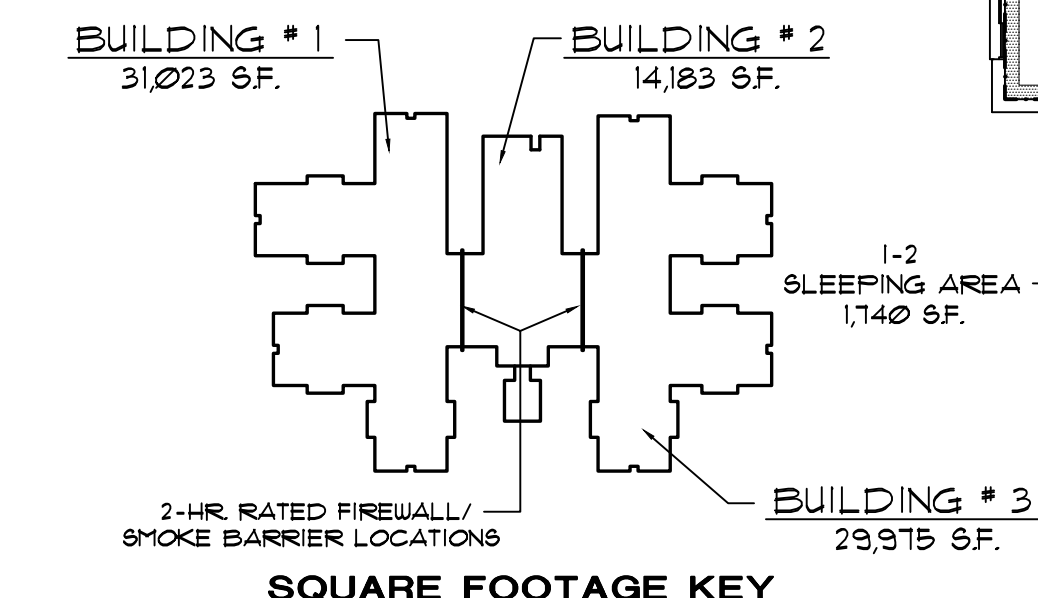
**E. EGRESS CAPACITY:**

- CORRIDORS: 36' WIDE / 0.2' = 480 PEOPLE
- EXITS PROVIDED: 13
- EXIT WIDTHS: 42' / 0.2' = 210 PEOPLE
- EXIT CAPACITY: 210 X 13 = 2,730 PEOPLE

**F. RESIDENTIAL STORAGE:**

RESID. STOR. # 41	500 S.F.
RESID. STOR. # 41A	213 S.F.
713 S.F. / 138	= 5.2 S.F. PER PERSON

TOTAL OCCUPANCY LOAD: 193 PEOPLE



**LIBERTY COMMONS**  
**BRIAR CHAPEL**  
 Chatham County, North Carolina

**David R. Polston - Architect**  
 3806 Park Ave. Suite C, Wilmington, NC 28403  
 Architecture Planning Design

138 BED FACILITY

LS  
 2