



COR3 Design, LLC

Commercial, Office, Retail, Restaurant, Real Estate Development

125 Rhett Street
Suite 101
Greenville, SC 29601

Phone: 864.451.5288

Fax: 864.990.3085

www.cor3design.com

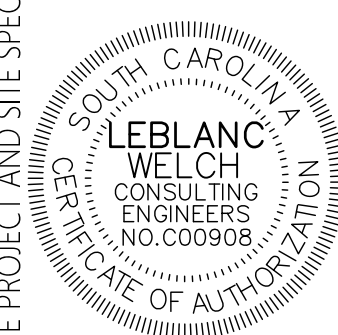
Consultants:

STRUCTURAL
Taylor and Viola Structural Engineers
PO Box 2616
Fibery, NC 28603
828.328.6331

PLUMBING
LWI Consulting Engineers
870 Cleveland St, STE 1D
Greenville, SC 29601
864.271.6535

MECHANICAL
LWI Consulting Engineers
870 Cleveland St, STE 1D
Greenville, SC 29601
864.271.6535

ELECTRICAL
Matrix Engineering, INC
912 S Pine Street
Spartanburg, SC 29302
864.583.6274



Project Title:

**HOME 2 SUITES
GREENWOOD SC**
475 HOSPITALITY BLVD,
GREENWOOD, SC 29649

Client Logo:



Seals:

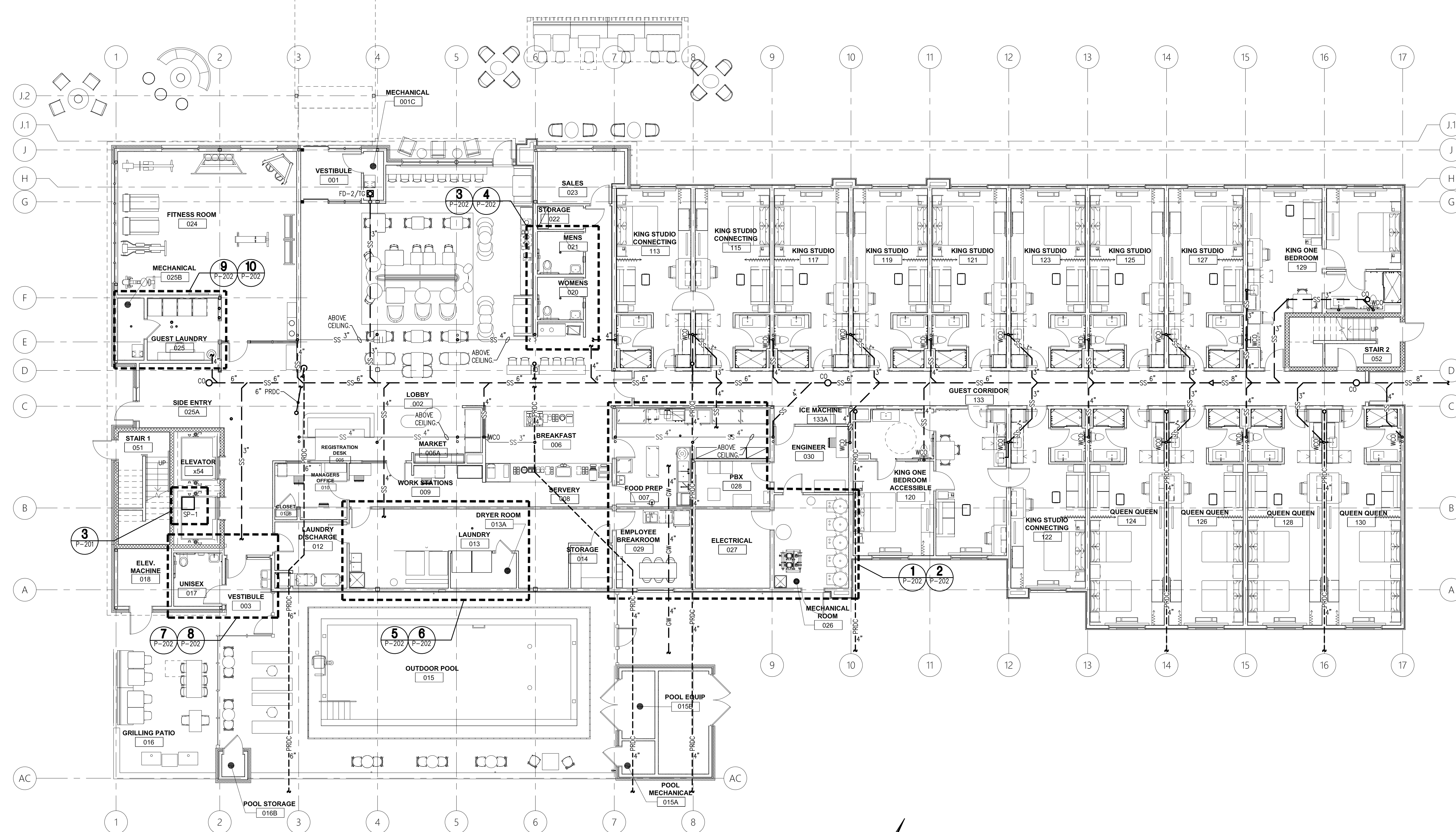
Revisions:
04.22.2024 50% DD Set
08.26.2024 99% Review Set

Project Number:
23112
Phase:
CD
Date:
04.22.2024
Drawn By:
NSC
Checked By:
LWI

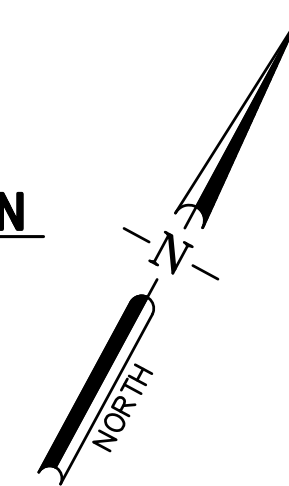
Sheet Number:

P-101

Sheet Title:
**FIRST FLOOR PLUMBING
WASTE PLAN**



**FIRST FLOOR
PLUMBING WASTE PLAN**
1
P-101 SCALE: 1/8"=1'-0"



PLUMBING LEGEND	
— CW —	COLD WATER
— CW —	COLD WATER BURIED
— HW —	140°F HOT WATER
— THW —	125°F TEMPERED HOT WATER
— HWR —	HOT WATER RETURN
— THWR —	TEMPERED HOT WATER RETURN
— SS —	SANITARY SEWER
— GW —	SANITARY SEWER BURIED OR BELOW FLOOR
— GI —	GREASE INTERCEPTOR WASTE
— NS —	NATURAL GAS
— PRDC —	PRIMARY ROOF DRAIN CONDUCTOR
— C —	CONDENSATE DRAINAGE
— PD —	PUMPED DRAIN

THIS DRAWING IS THE PROPERTY OF COR3 DESIGN, LLC AND IS COPY RIGHT PROTECTED. IT IS NOT TO BE REPRODUCED OR COPIED IN WHOLE OR IN PART. IT IS ONLY TO BE USED FOR THE PROJECT AND SITE SPECIFICALLY IDENTIFIED HEREIN AND IS NOT TO BE USED FOR ANY OTHER PROJECT. IT IS TO BE RETURNED UPON REQUEST.



COR3 Design, LLC

Commercial Office, Retail, Restaurant, Real Estate Development

125 Rhett Street
Suite 101
Greenville, SC 29601

Phone: 864.451.5288

Fax: 864.990.3085

www.cor3design.com

Consultants:

STRUCTURAL
Taylor and Viola Structural Engineers
PO Box 2616
Hickory, NC 28603
828.328.6331

PLUMBING
LWI Consulting Engineers
870 Cleveland St, STE 1D
Greenville, SC 29601
864.271.6535

MECHANICAL
LWI Consulting Engineers
870 Cleveland St, STE 1D
Greenville, SC 29601
864.271.6535

ELECTRICAL
Matrix Engineering, INC
912 S Pine Street
Spartanburg, SC 29302
864.583.6274



Project Title:
**HOME 2 SUITES
GREENWOOD SC**
475 HOSPITALITY BLVD,
GREENWOOD, SC 29649

Client Logo:

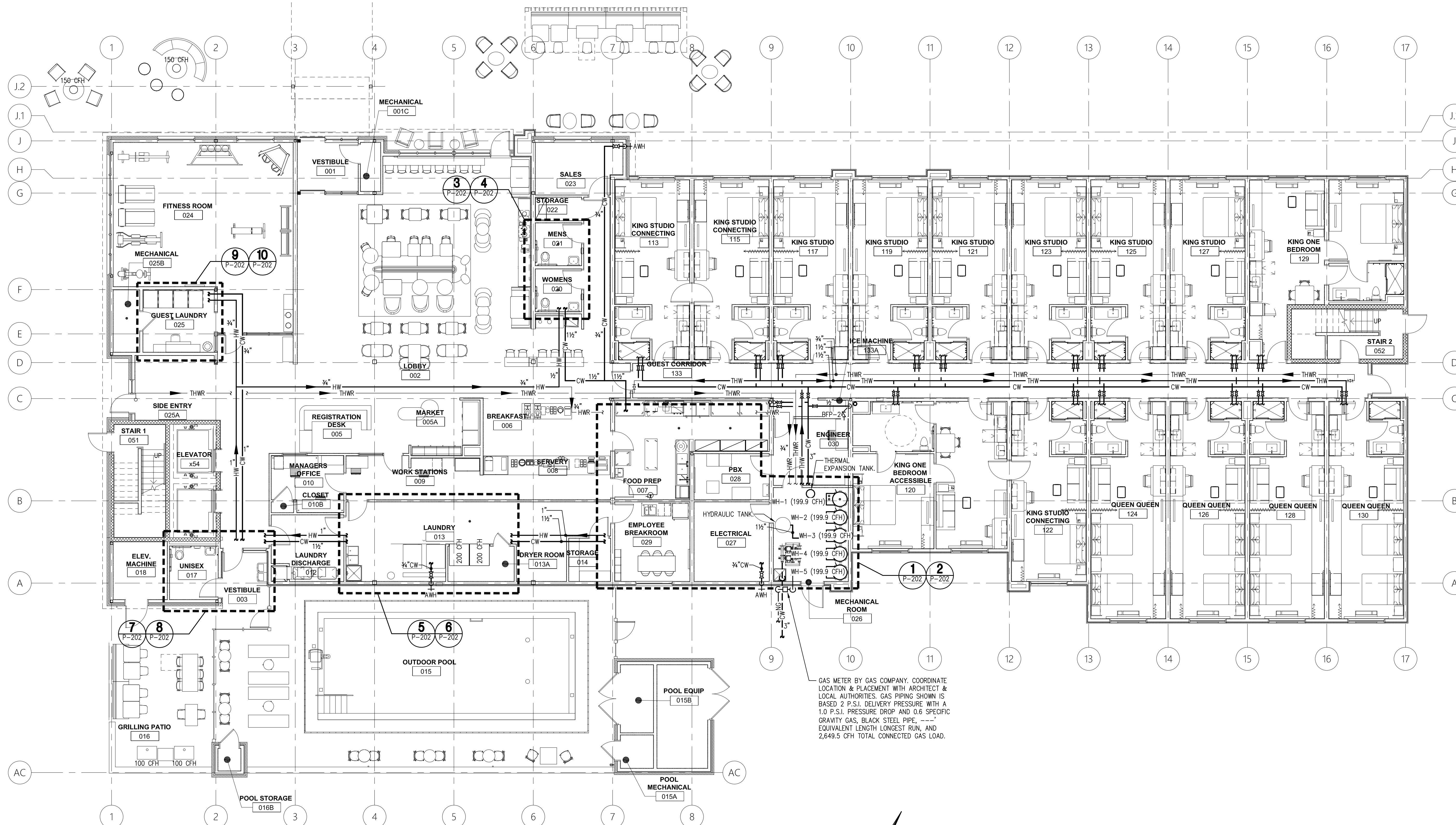


Seals:

Revisions:
04.22.2024 50% DD Set
08.26.2024 99% Review Set

Project Number:
23112
Phase:
CD
Date:
04.22.2024
Drawn By:
NSC
Checked By:
LWI

Sheet Number:
P-102
Sheet Title:
FIRST FLOOR PLUMBING
SUPPLY PLAN



**FIRST FLOOR
1 PLUMBING SUPPLY PLAN**
P-102 SCALE: 1/8"=1'-0"

PLUMBING LEGEND	
— CW —	COLD WATER
— CW —	COLD WATER BURIED
— HW —	140°F HOT WATER
— THW —	125°F TEMPERED HOT WATER
— HWR —	HOT WATER RETURN
— THWR —	TEMPERED HOT WATER RETURN
— SS —	SANITARY SEWER
— GW —	SANITARY SEWER BURIED OR BELOW FLOOR
— NG —	GREASE INTERCEPTOR WASTE
— NG —	SANITARY SEWER VENT
— PD —	NATURAL GAS
— C —	PRIMARY ROOF DRAIN CONDUCTOR
— C —	CONDENSATE DRAINAGE
— PD —	PUMPED DRAIN

THIS DRAWING IS THE PROPERTY OF COR3 DESIGN, LLC AND IS COPY RIGHT PROTECTED. IT IS NOT TO BE REPRODUCED OR COPIED IN WHOLE OR IN PART. IT IS ONLY TO BE USED FOR THE PROJECT AND SITE SPECIFICALLY IDENTIFIED HEREIN AND IS NOT TO BE USED FOR ANY OTHER PROJECT. IT IS TO BE RETURNED UPON REQUEST.



COR3 Design, LLC

Commercial, Office, Retail, Restaurant, Real Estate Development

125 Rhett Street
Suite 101
Greenville, SC 29601

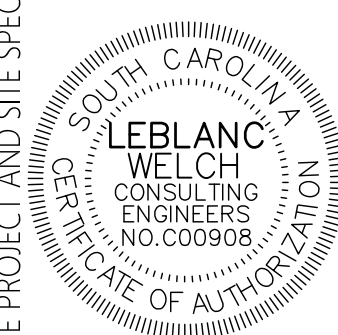
Phone: 864.451.5288
Fax: 864.990.3085
www.cor3design.com

Consultants:
STRUCTURAL
Taylor and Viola Structural Engineers
PO Box 2616
Fletcher, NC 28603
828.328.6331

PLUMBING
LWI Consulting Engineers
870 Cleveland St, STE 1D
Greenville, SC 29601
864.271.6535

MECHANICAL
LWI Consulting Engineers
870 Cleveland St, STE 1D
Greenville, SC 29601
864.271.6535

ELECTRICAL
Matrix Engineering, INC
912 S Pine Street
Spartanburg, SC 29302
864.583.6274



Project Title:
**HOME 2 SUITES
GREENWOOD SC**
475 HOSPITALITY BLVD,
GREENWOOD, SC 29649

Client Logo:



Seals:

Revisions:
04.22.2024 50% DD Set
08.26.2024 99% Review Set

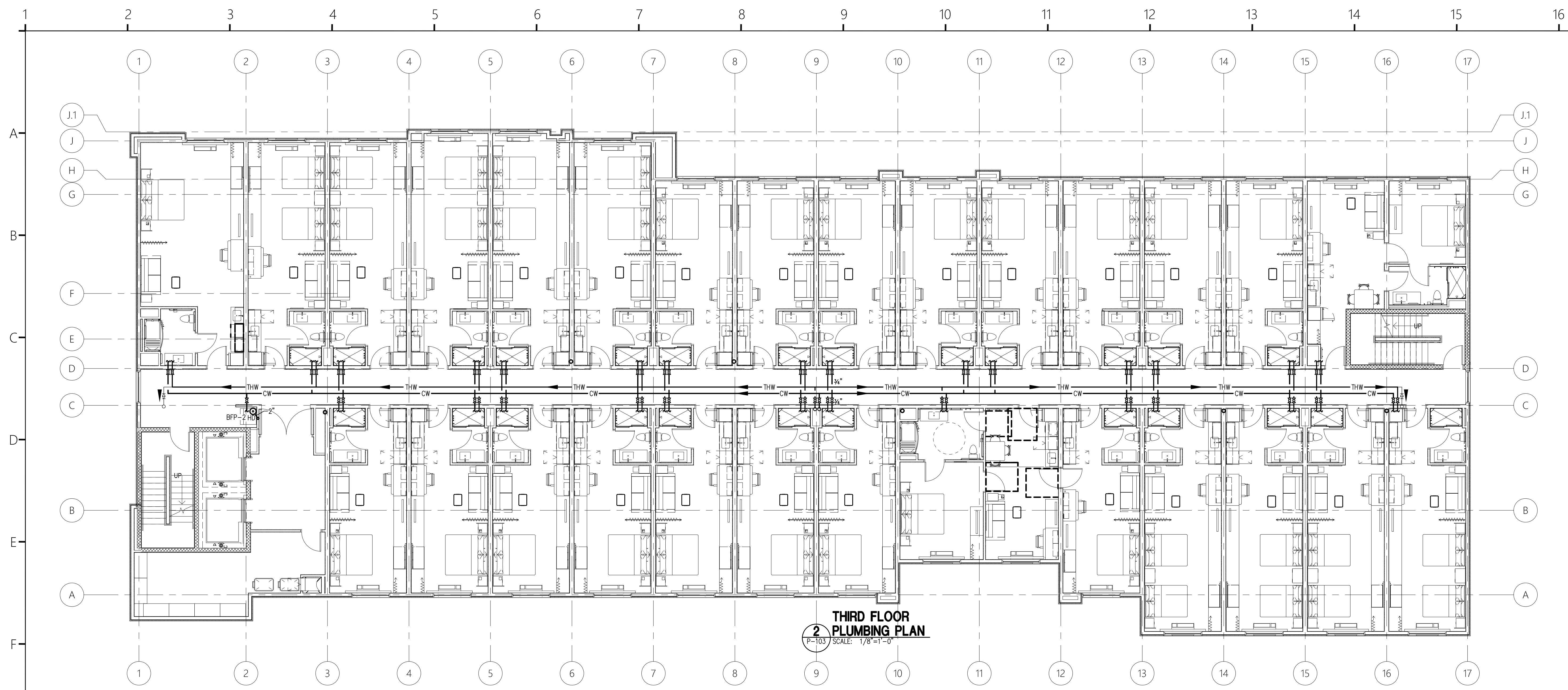
Project Number:
23112
Phase:
CD
Date:
04.22.2024
Drawn By:
NSC
Checked By:
LWI

Sheet Number:

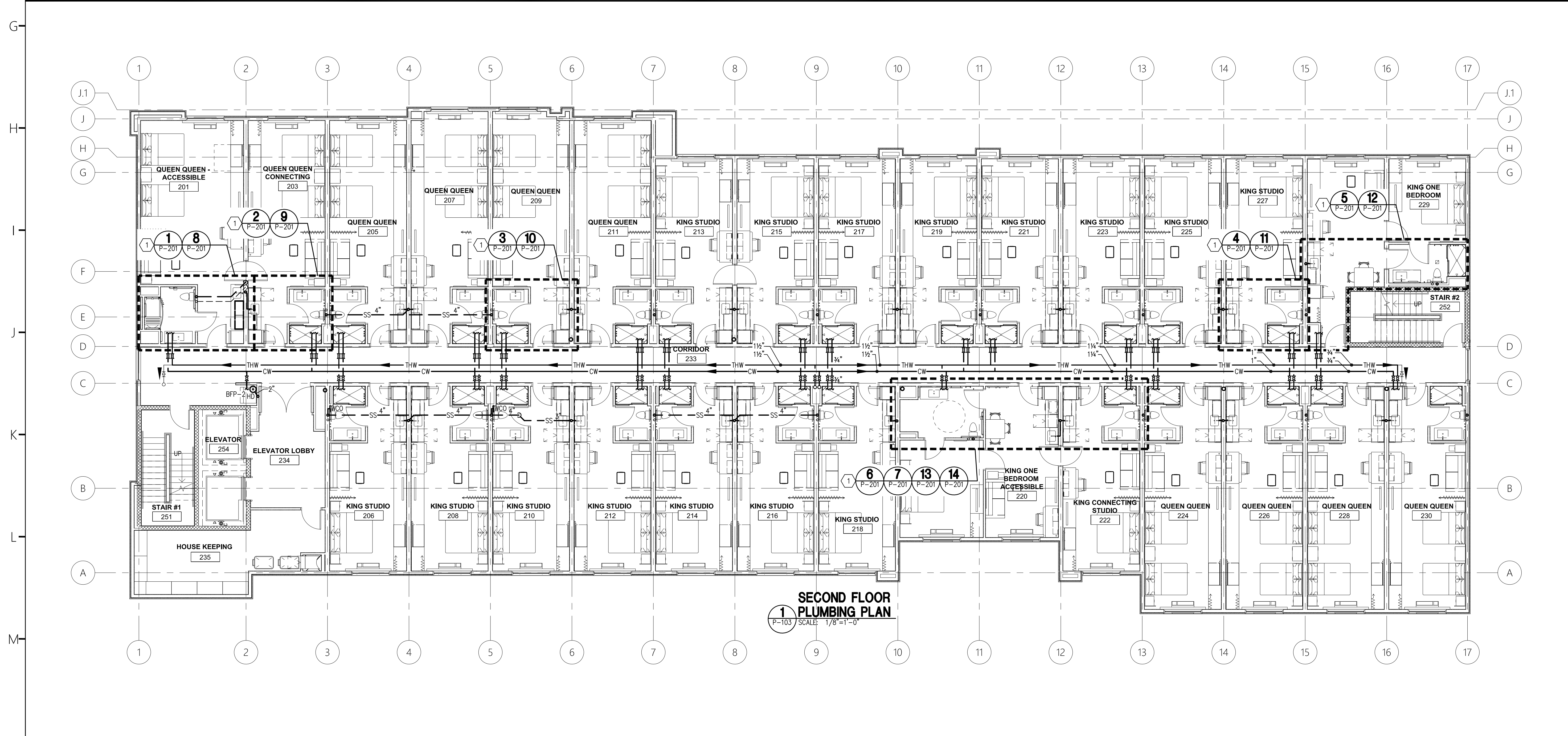
P-103

Sheet Title:
**SECOND & THIRD FLOOR
PLUMBING PLANS**

THIS DRAWING IS THE PROPERTY OF COR3 DESIGN, LLC AND IS COPY RIGHT PROTECTED. IT IS NOT TO BE REPRODUCED OR COPIED IN WHOLE OR IN PART. IT IS ONLY TO BE USED FOR THE PROJECT AND SITE SPECIFICALLY IDENTIFIED HEREIN AND IS NOT TO BE USED FOR ANY OTHER PROJECT. IT IS TO BE RETURNED UPON REQUEST.



**THIRD FLOOR
PLUMBING PLAN**
P-103 SCALE: 1/8"=1'-0"

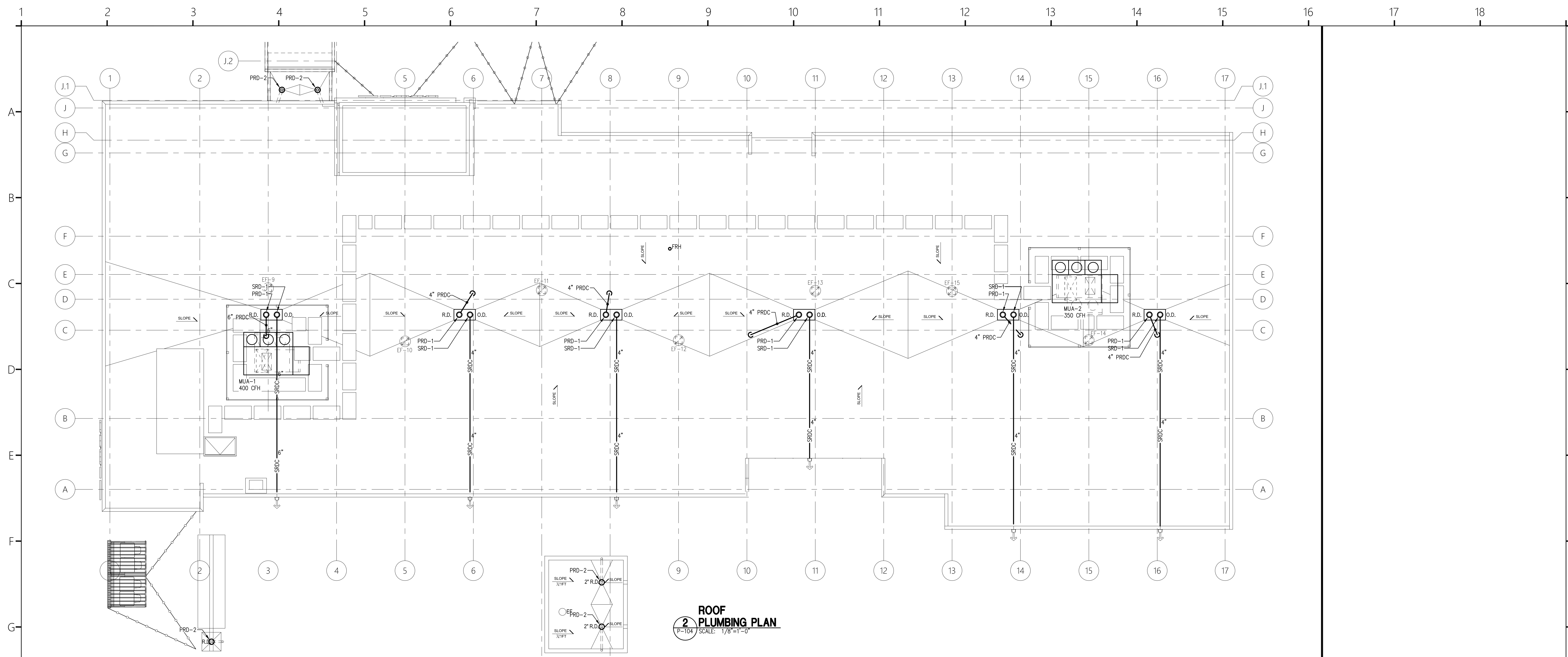


**SECOND FLOOR
PLUMBING PLAN**
P-103 SCALE: 1/8"=1'-0"

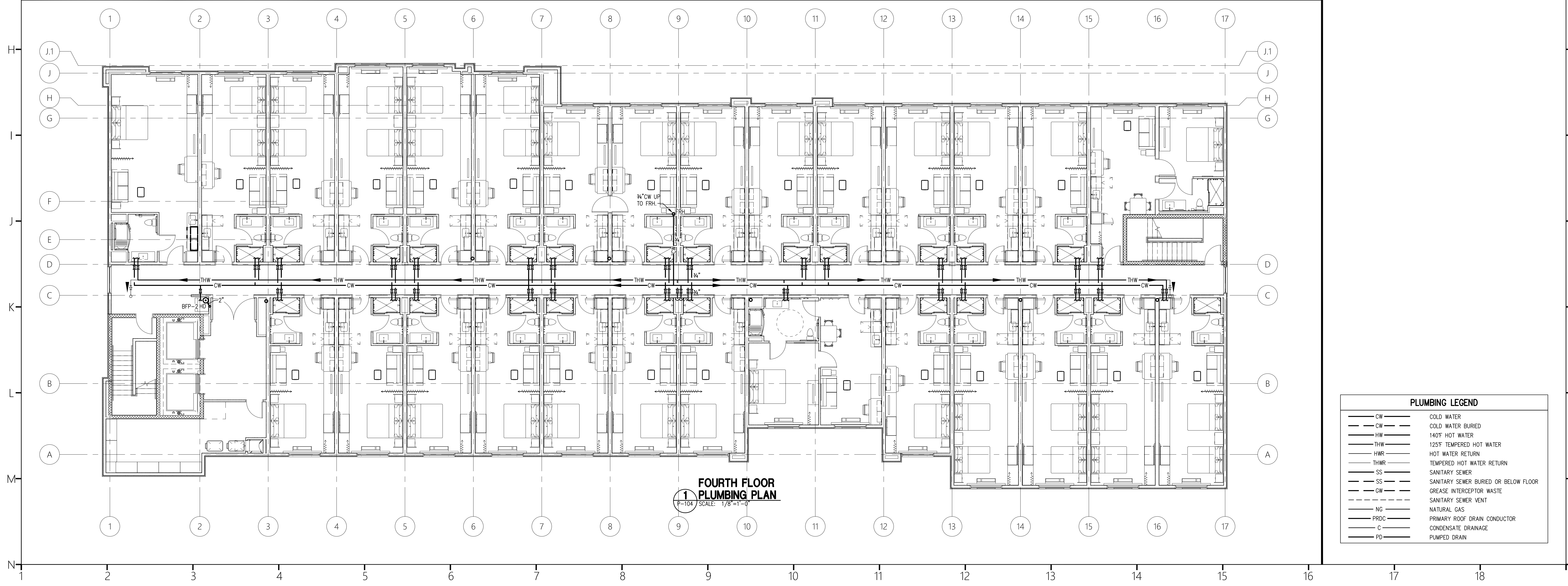
KEY NOTES:

- 1. TYPICAL FOR ALL SIMILAR FIXTURE LAYOUTS FOR ALL FLOORS.

PLUMBING LEGEND	
— CW —	COLD WATER
— CW —	COLD WATER BURIED
— HW —	140°F HOT WATER
— THW —	125°F TEMPERED HOT WATER
— HWR —	HOT WATER RETURN
— THWR —	TEMPERED HOT WATER RETURN
— SS —	SANITARY SEWER
— SS —	SANITARY SEWER BURIED OR BELOW FLOOR
— GW —	GREASE INTERCEPTOR WASTE
— SV —	SANITARY SEWER VENT
— NG —	NATURAL GAS
— PRDC —	PRIMARY ROOF DRAIN CONDUCTOR
— C —	CONDENSATE DRAINAGE
— PD —	PUMPED DRAIN



2 ROOF PLUMBING PLAN
 P-104 SCALE: 1/8"=1'-0"



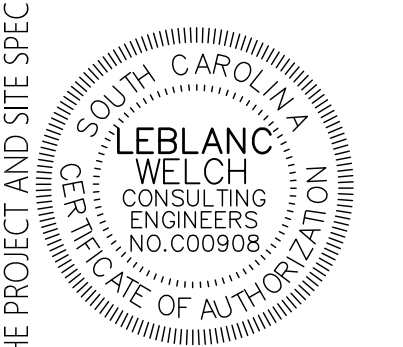
1 FOURTH FLOOR PLUMBING PLAN
 P-104 SCALE: 1/8"=1'-0"

PLUMBING LEGEND	
— CW —	COLD WATER
— CW —	COLD WATER BURIED
— HW —	140°F HOT WATER
— THW —	125°F TEMPERED HOT WATER
— HWR —	HOT WATER RETURN
— THWR —	TEMPERED HOT WATER RETURN
— SS —	SANITARY SEWER
— SS —	SANITARY SEWER BURIED OR BELOW FLOOR
— GW —	GREASE INTERCEPTOR WASTE
— SV —	SANITARY SEWER VENT
— NG —	NATURAL GAS
— PRDC —	PRIMARY ROOF DRAIN CONDUCTOR
— C —	CONDENSATE DRAINAGE
— PD —	PUMPED DRAIN



COR3 Design, LLC
 Commercial, Office, Retail, Restaurant, Real Estate Development
 125 Rhett Street
 Suite 101
 Greenville, SC 29601
 Phone: 864.451.5288
 Fax: 864.990.3085
 www.cor3design.com

- Consultants:
- STRUCTURAL**
 Taylor and Viola Structural Engineers
 PID Box 2616
 Hickory, NC 28603
 828.328.6331
 - PLUMBING**
 LWI Consulting Engineers
 870 Cleveland St, STE 1D
 Greenville, SC 29601
 864.271.6535
 - MECHANICAL**
 LWI Consulting Engineers
 870 Cleveland St, STE 1D
 Greenville, SC 29601
 864.271.6535
 - ELECTRICAL**
 Matrix Engineering, INC
 912 S Pine Street
 Spartanburg, SC 29302
 864.583.6274



Project Title:
HOME 2 SUITES GREENWOOD SC
 475 HOSPITALITY BLVD,
 GREENWOOD, SC 29649



Client Logo:
 Revisions:
 04.22.2024 50% DD Set
 08.26.2024 99% Review Set

Project Number:
 23112
 Phase:
 CD
 Date:
 04.22.2024
 Drawn By:
 NSC
 Checked By:
 LWI
 Sheet Number:
P-104
 Sheet Title:
FOURTH FLOOR & ROOF PLUMBING PLANS

1
A
B
C
D
E
F
G
H
I
J
K
L
M
N

A
B
C
D
E
F
G
H
I
J
K
L
M
N

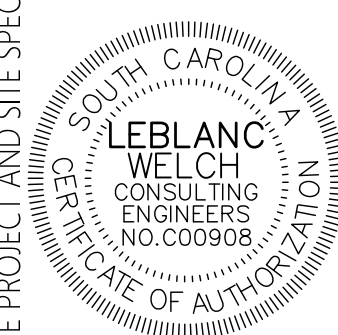
THIS DRAWING IS THE PROPERTY OF COR3 DESIGN, LLC AND IS COPY RIGHT PROTECTED. IT IS NOT TO BE REPRODUCED OR COPIED IN WHOLE OR IN PART. IT IS TO BE RETURNED UPON REQUEST.



COR3 Design, LLC
Commercial, Office, Retail, Restaurant, Real Estate Development

125 Rhett Street
Suite 101
Greenville, SC 29601
Phone: 864.451.5288
Fax: 864.990.3085
www.cor3design.com

Consultants:
STRUCTURAL
Taylor and Viola Structural Engineers
PO Box 2616
Hickory, NC 28603
828.328.6331
PLUMBING
LWI Consulting Engineers
870 Cleveland St, STE 1D
Greenville, SC 29601
864.271.6535
MECHANICAL
LWI Consulting Engineers
870 Cleveland St, STE 1D
Greenville, SC 29601
864.271.6535
ELECTRICAL
Matrix Engineering, INC
912 S Pine Street
Spartanburg, SC 29302
864.583.6274



Project Title:
**HOME 2 SUITES
GREENWOOD SC**
475 HOSPITALITY BLVD,
GREENWOOD, SC 29649

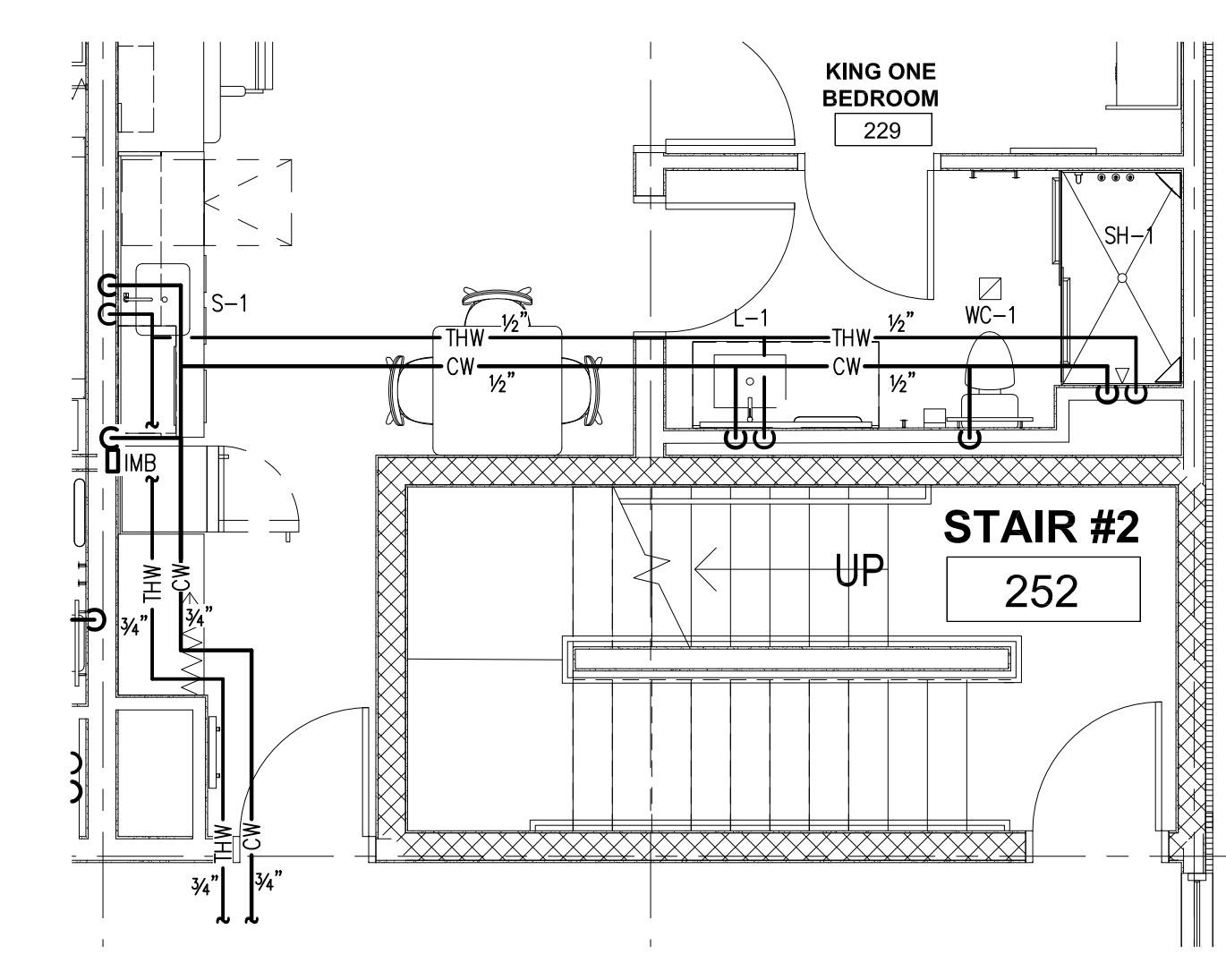


Revisions:
04.22.2024 50% DD Set
08.26.2024 99% Review Set

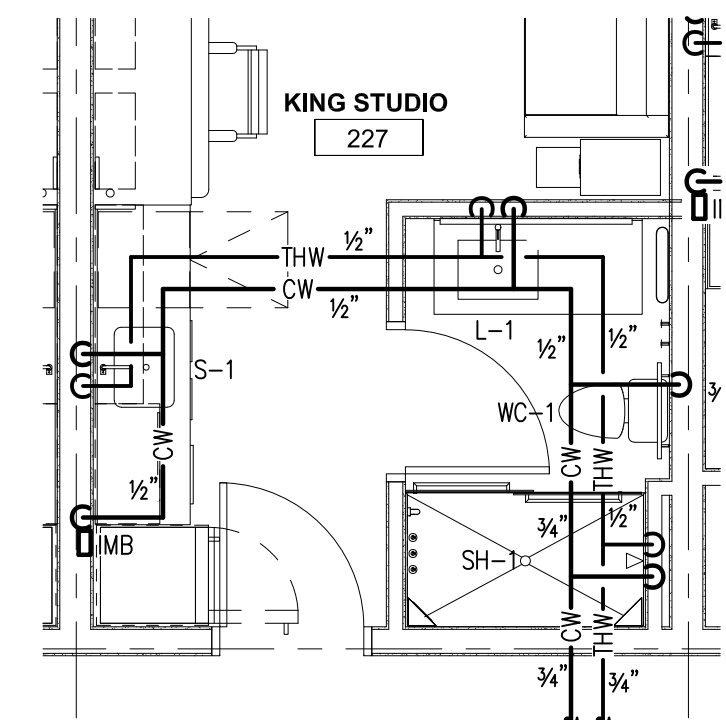
Project Number:
23112
Phase:
CD
Date:
04.22.2024
Drawn By:
NSC
Checked By:
LWI

Sheet Number:
P-201
Sheet Title:
**PLUMBING GUEST ROOM
PLANS**

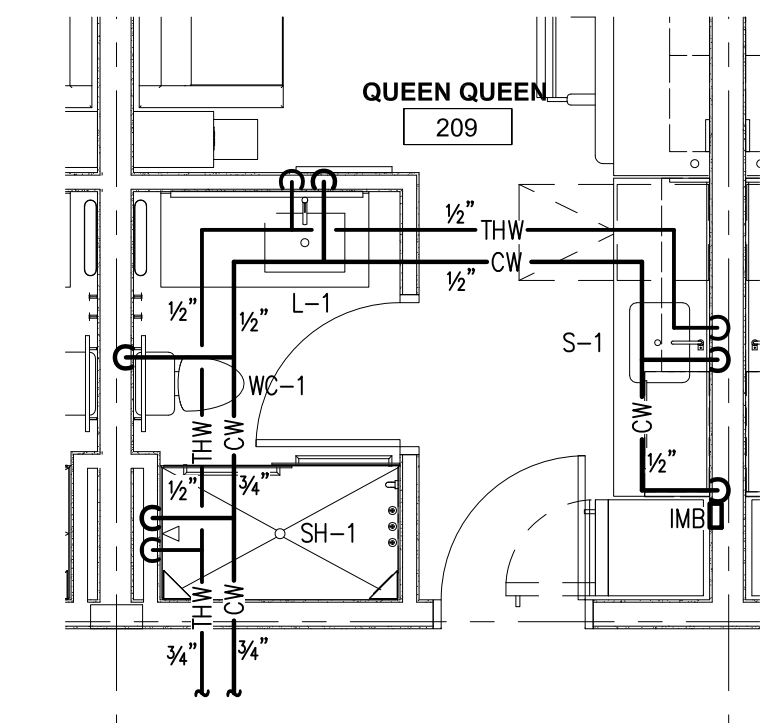
THIS DRAWING IS THE PROPERTY OF COR3 DESIGN, LLC AND IS COPY RIGHT PROTECTED. IT IS NOT TO BE REPRODUCED OR COPIED IN WHOLE OR IN PART. IT IS ONLY TO BE USED FOR THE PROJECT AND SITE SPECIFICALLY IDENTIFIED HEREIN AND IS NOT TO BE USED FOR ANY OTHER PROJECT. IT IS TO BE RETURNED UPON REQUEST.



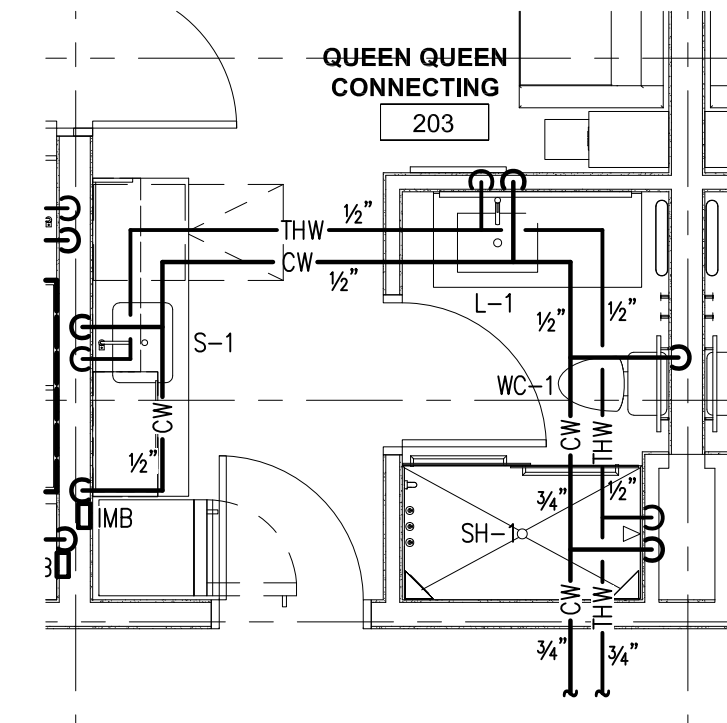
**5 KING 1 BR
PLUMBING SUPPLY PLAN**
P-201 SCALE: 1/4"=1'-0"



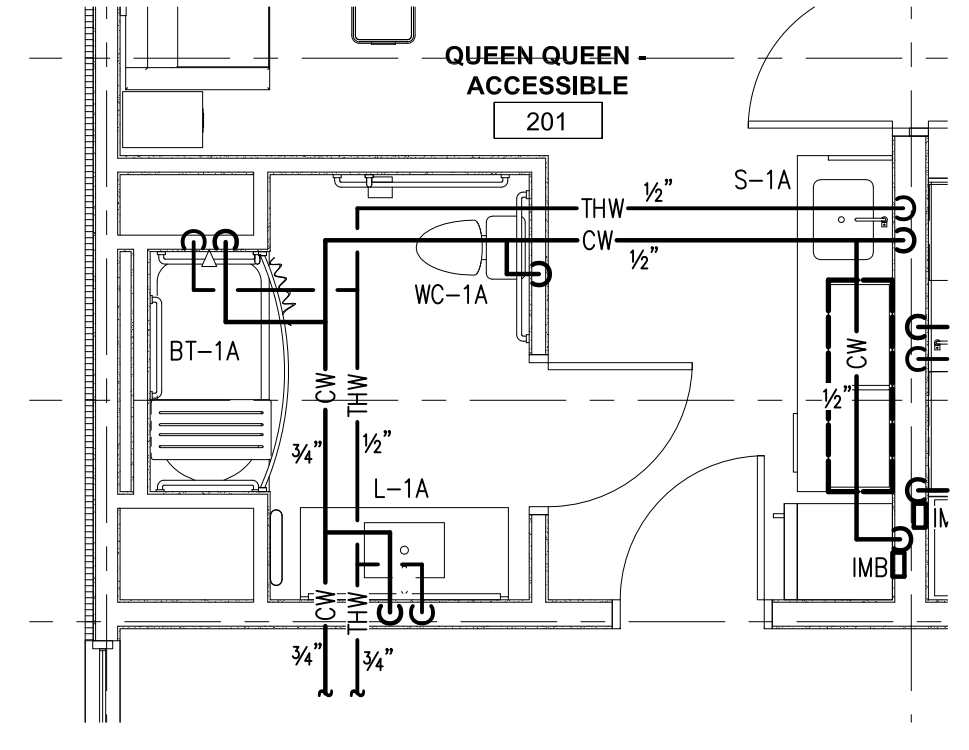
**4 KING STUDIO
PLUMBING SUPPLY PLAN**
P-201 SCALE: 1/4"=1'-0"



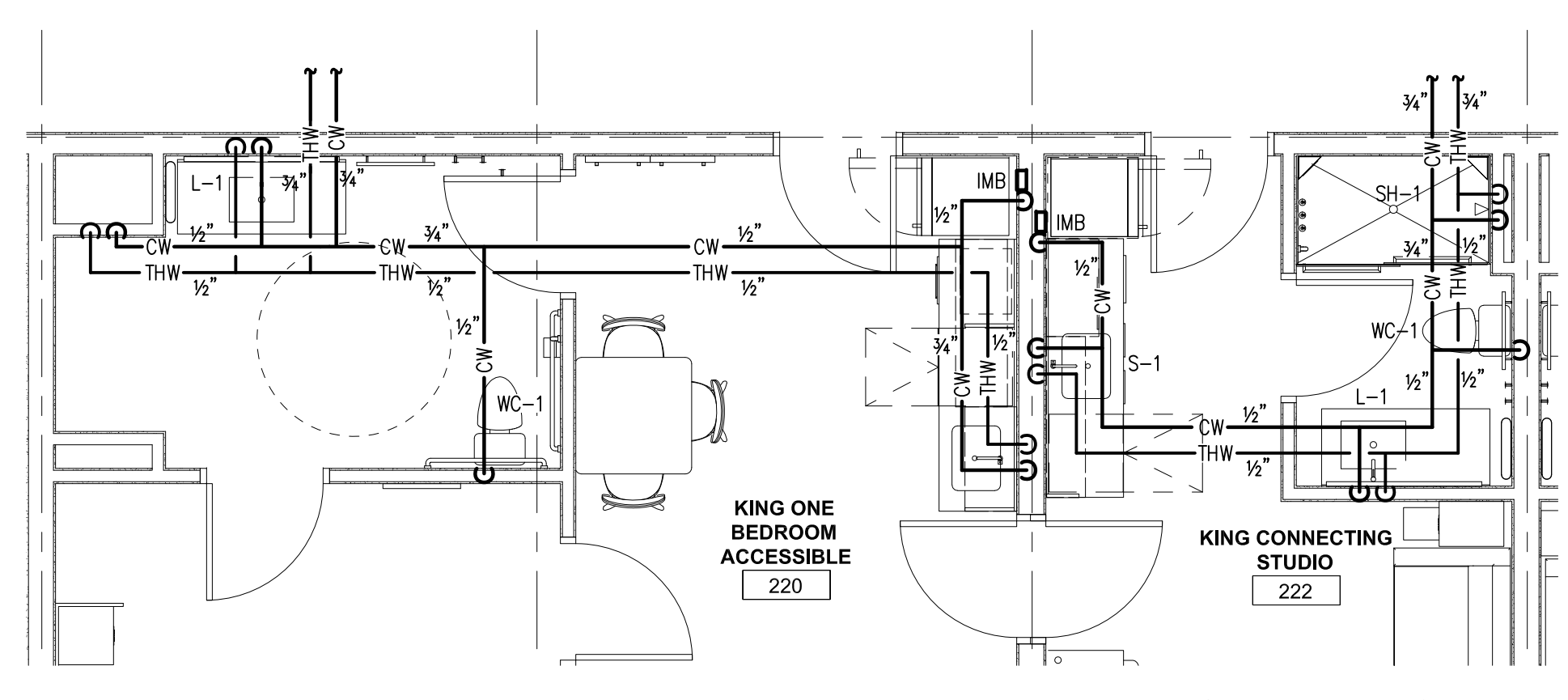
**3 Q Q
PLUMBING SUPPLY PLAN**
P-201 SCALE: 1/4"=1'-0"



**2 Q Q CONNECTING
PLUMBING SUPPLY PLAN**
P-201 SCALE: 1/4"=1'-0"

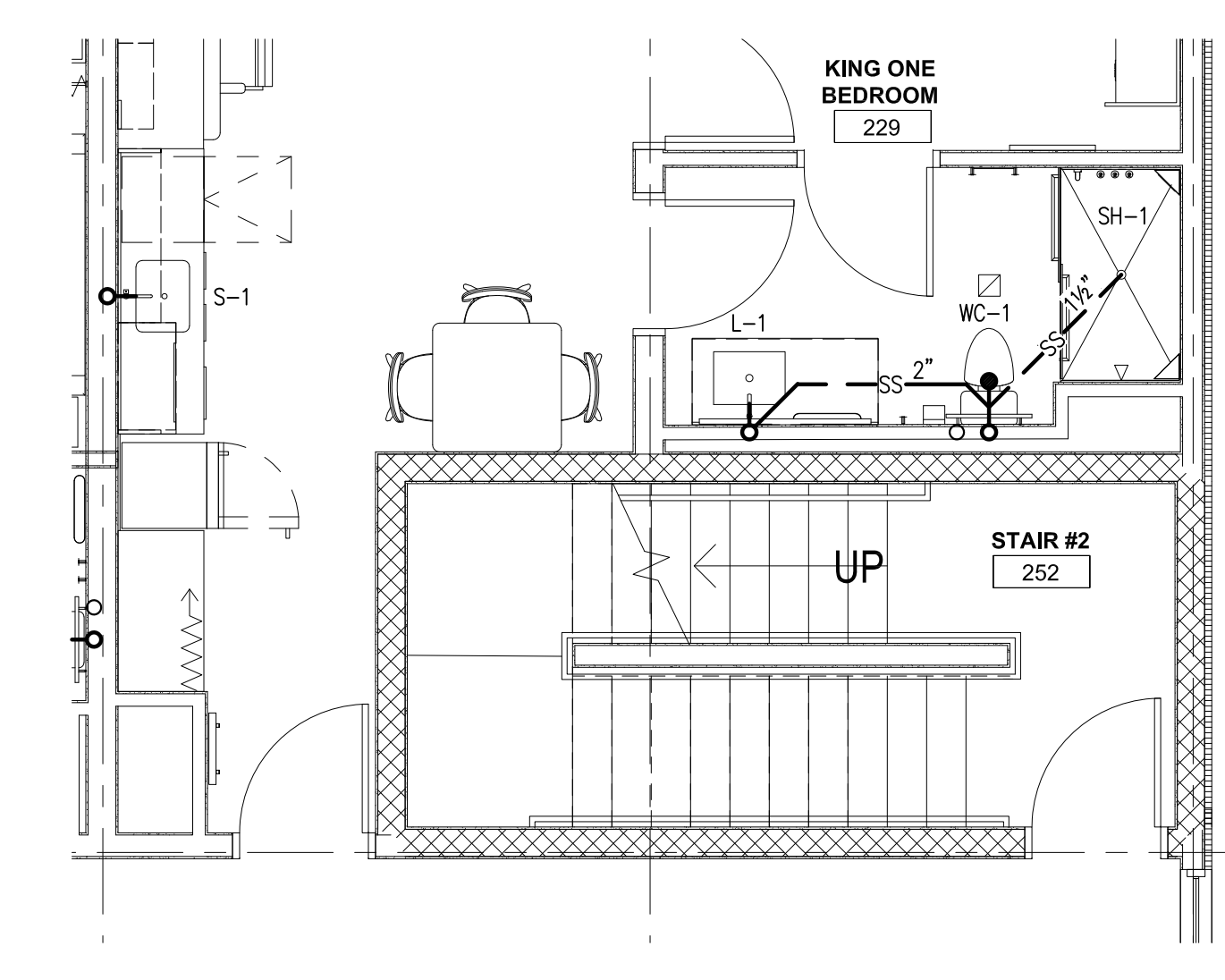


**1 Q Q ACCESSIBLE
PLUMBING SUPPLY PLAN**
P-201 SCALE: 1/4"=1'-0"

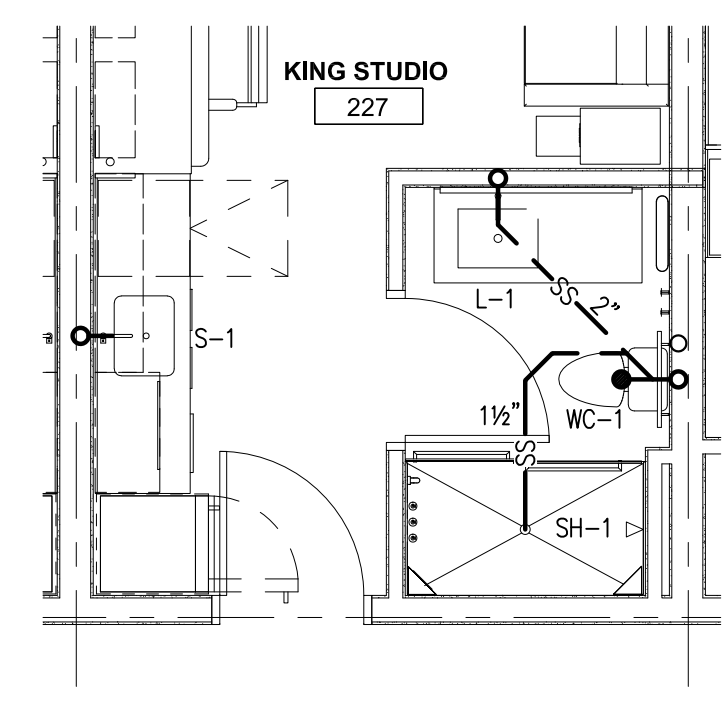


**7 KING 1 BR
PLUMBING SUPPLY PLAN**
P-201 SCALE: 1/4"=1'-0"

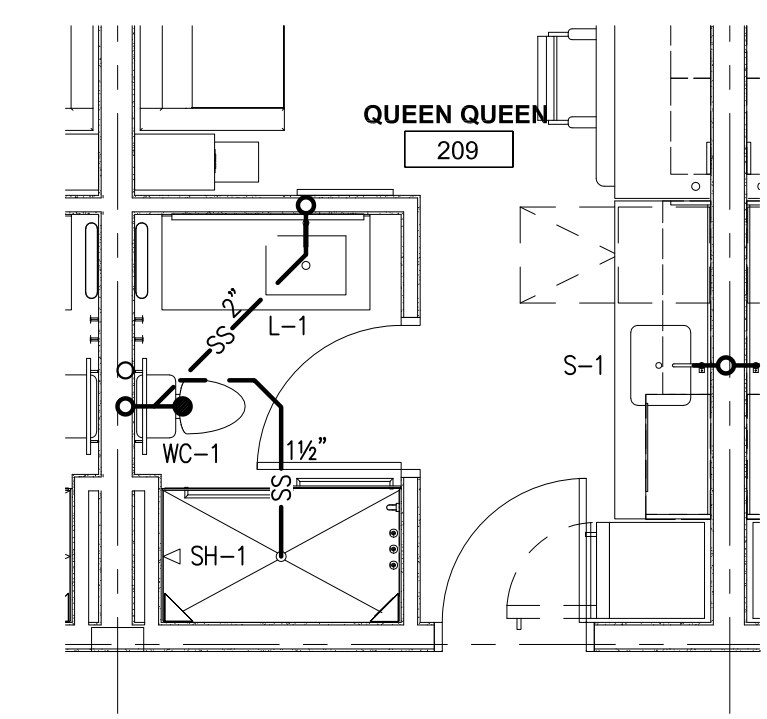
**6 KING CONNECTING STUDIO
PLUMBING SUPPLY PLAN**
P-201 SCALE: 1/4"=1'-0"



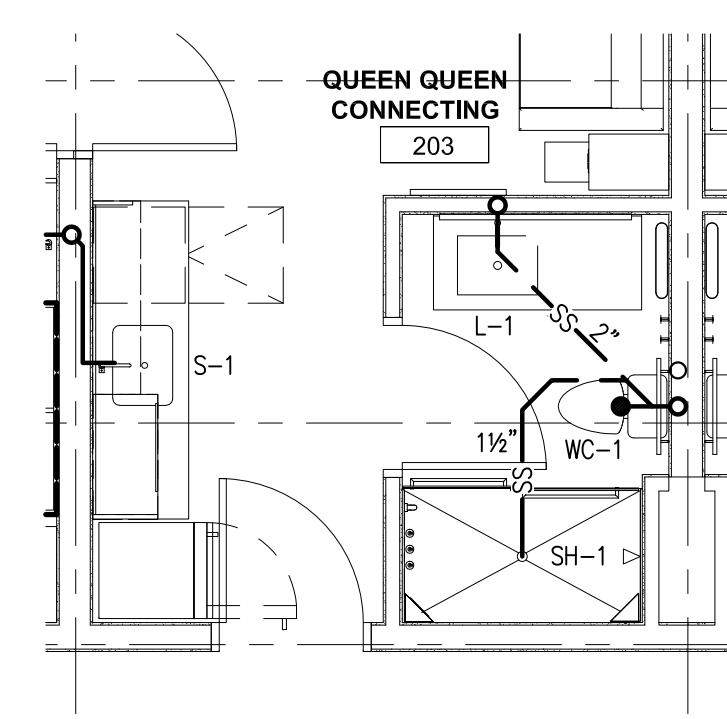
**12 KING 1 BR
PLUMBING WASTE PLAN**
P-201 SCALE: 1/4"=1'-0"



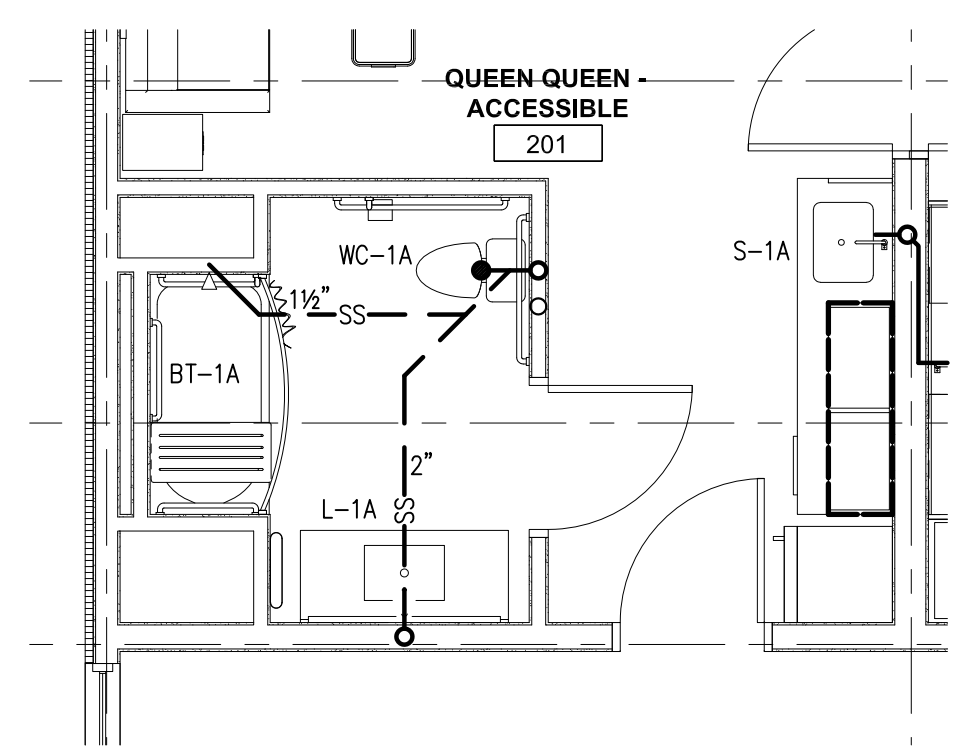
**11 KING STUDIO
PLUMBING WASTE PLAN**
P-201 SCALE: 1/4"=1'-0"



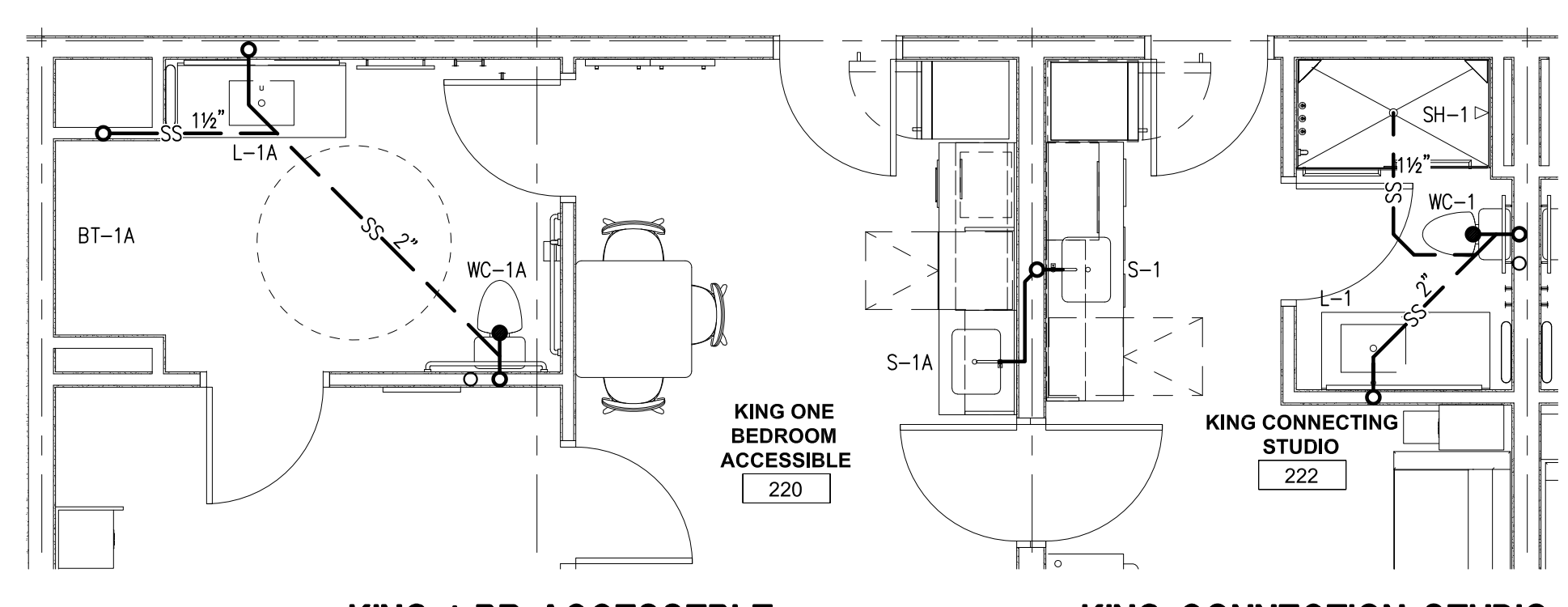
**10 Q Q
PLUMBING WASTE PLAN**
P-201 SCALE: 1/4"=1'-0"



**9 Q Q CONNECTING
PLUMBING WASTE PLAN**
P-201 SCALE: 1/4"=1'-0"



**8 Q Q ACCESSIBLE
PLUMBING WASTE PLAN**
P-201 SCALE: 1/4"=1'-0"



**14 KING 1 BR ACESSEBLE
PLUMBING WASTE PLAN**
P-201 SCALE: 1/4"=1'-0"

**13 KING CONNECTION STUDIO
PLUMBING WASTE PLAN**
P-201 SCALE: 1/4"=1'-0"

PLUMBING LEGEND	
— CW —	COLD WATER
— CW —	COLD WATER BURIED
— HW —	140°F HOT WATER
— THW —	125°F TEMPERED HOT WATER
— HWR —	HOT WATER RETURN
— THWR —	TEMPERED HOT WATER RETURN
— SS —	SANITARY SEWER
— SS —	SANITARY SEWER BURIED OR BELOW FLOOR
— GW —	GREASE INTERCEPTOR WASTE
— NG —	NATURAL GAS
— PRDC —	PRIMARY ROOF DRAIN CONDUCTOR
— C —	CONDENSATE DRAINAGE
— PD —	PUMPED DRAIN



COR3 Design, LLC

Commercial, Office, Retail, Restaurant, Real Estate Development

125 Rhett Street
Suite 101
Greenville, SC 29601

Phone: 864.451.5288

Fax: 864.990.3085

www.cor3design.com

Consultants:

STRUCTURAL

Taylor and Viola Structural Engineers

PO Box 2616

Hickory, NC 28603

828.328.6331

PLUMBING

LWI Consulting Engineers

870 Cleveland St, STE 1D

Greenville, SC 29601

864.271.6535

MECHANICAL

LWI Consulting Engineers

870 Cleveland St, STE 1D

Greenville, SC 29601

864.271.6535

ELECTRICAL

Matrix Engineering, INC

912 S Pine Street

Spartanburg, SC 29302

864.583.6274



Project Title:

HOME 2 SUITES

GREENWOOD SC

475 HOSPITALITY BLVD,

GREENWOOD, SC 29649

Client Logo:



Seals:

Revisions:

04.22.2024 50% DD Set

08.26.2024 99% Review Set

Project Number:

23112

Phase:

CD

Date:

04.22.2024

Drawn By:

NSC

Checked By:

LWI

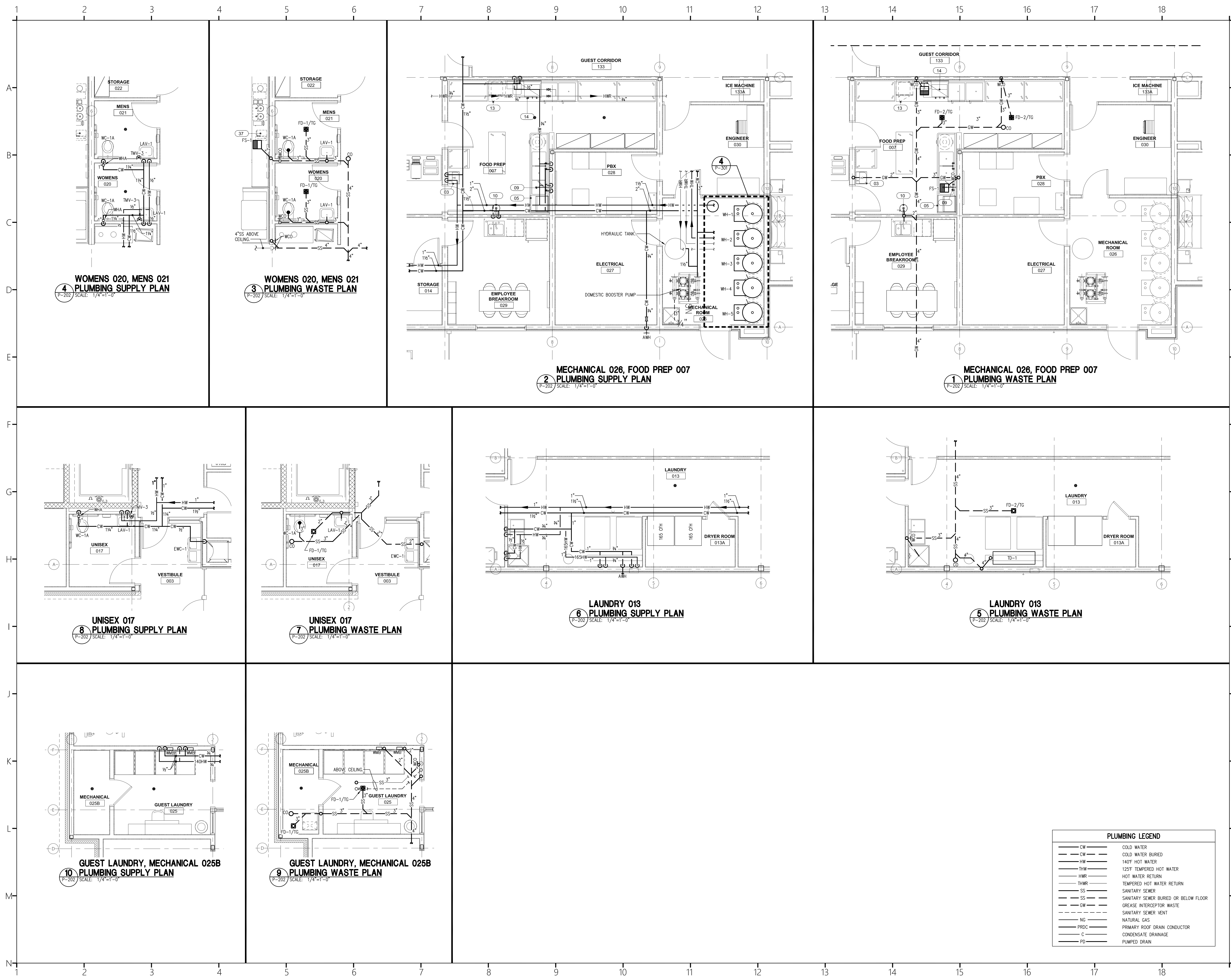
Sheet Number:

P-202

Sheet Title:

FIRST FLOOR ENLARGED

PLUMBING PLANS



4 WOMENS 020, MENS 021 PLUMBING SUPPLY PLAN
P-202 SCALE: 1/4"=1'-0"

3 WOMENS 020, MENS 021 PLUMBING WASTE PLAN
P-202 SCALE: 1/4"=1'-0"

2 MECHANICAL 026, FOOD PREP 007 PLUMBING SUPPLY PLAN
P-202 SCALE: 1/4"=1'-0"

1 MECHANICAL 026, FOOD PREP 007 PLUMBING WASTE PLAN
P-202 SCALE: 1/4"=1'-0"

8 UNISEX 017 PLUMBING SUPPLY PLAN
P-202 SCALE: 1/4"=1'-0"

7 UNISEX 017 PLUMBING WASTE PLAN
P-202 SCALE: 1/4"=1'-0"

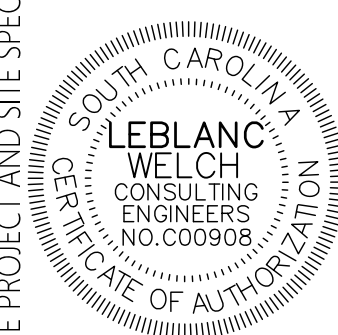
6 LAUNDRY 013 PLUMBING SUPPLY PLAN
P-202 SCALE: 1/4"=1'-0"

5 LAUNDRY 013 PLUMBING WASTE PLAN
P-202 SCALE: 1/4"=1'-0"

10 GUEST LAUNDRY, MECHANICAL 025B PLUMBING SUPPLY PLAN
P-202 SCALE: 1/4"=1'-0"

9 GUEST LAUNDRY, MECHANICAL 025B PLUMBING WASTE PLAN
P-202 SCALE: 1/4"=1'-0"

PLUMBING LEGEND	
— CW —	COLD WATER
— CW —	COLD WATER BURIED
— HW —	140°F HOT WATER
— THW —	125°F TEMPERED HOT WATER
— HWR —	HOT WATER RETURN
— THWR —	TEMPERED HOT WATER RETURN
— SS —	SANITARY SEWER
— SS —	SANITARY SEWER BURIED OR BELOW FLOOR
— GW —	GREASE INTERCEPTOR WASTE
— SS —	SANITARY SEWER VENT
— NG —	NATURAL GAS
— PRDC —	PRIMARY ROOF DRAIN CONDUCTOR
— C —	CONDENSATE DRAINAGE
— PD —	PUMPED DRAIN

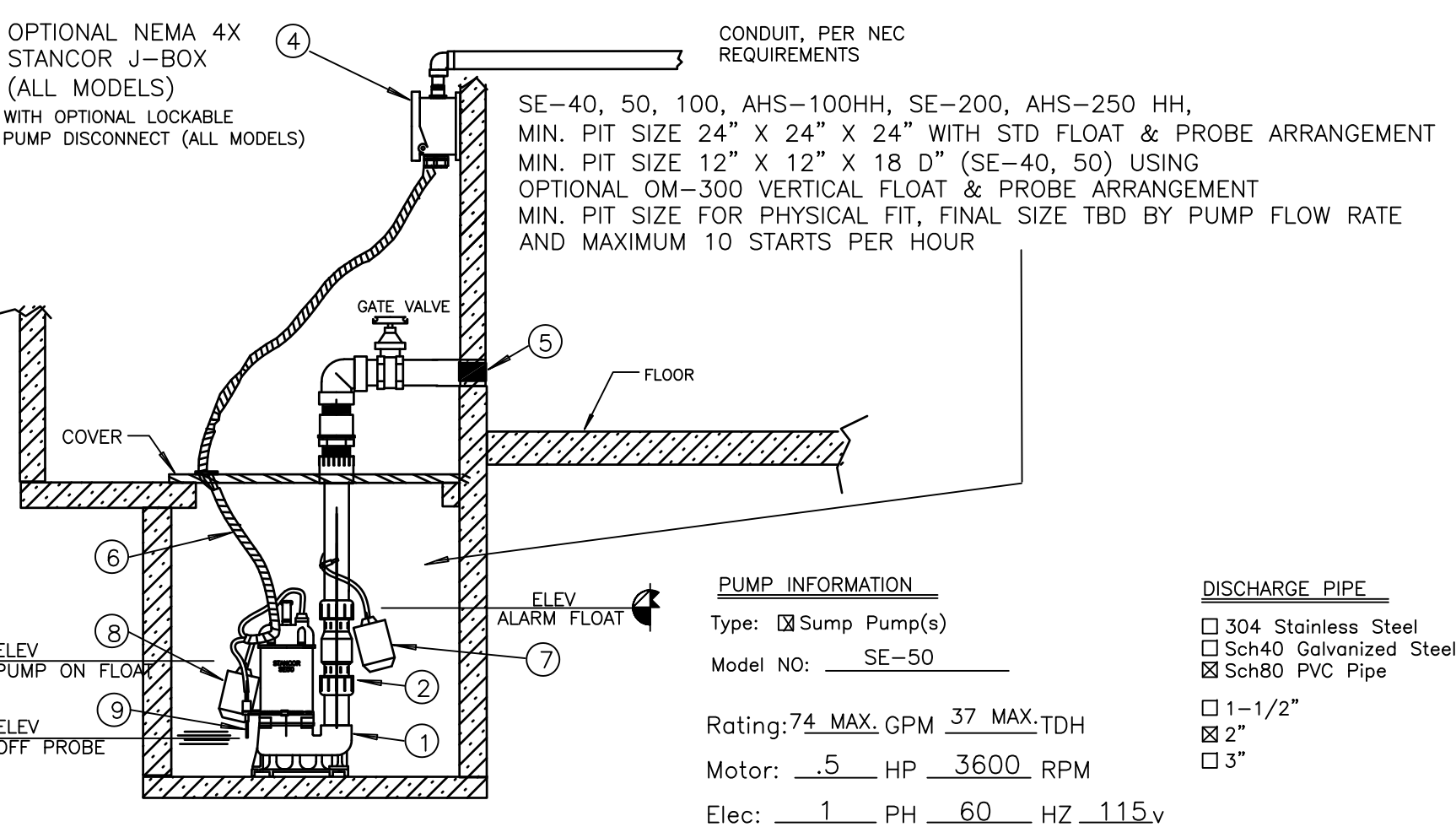
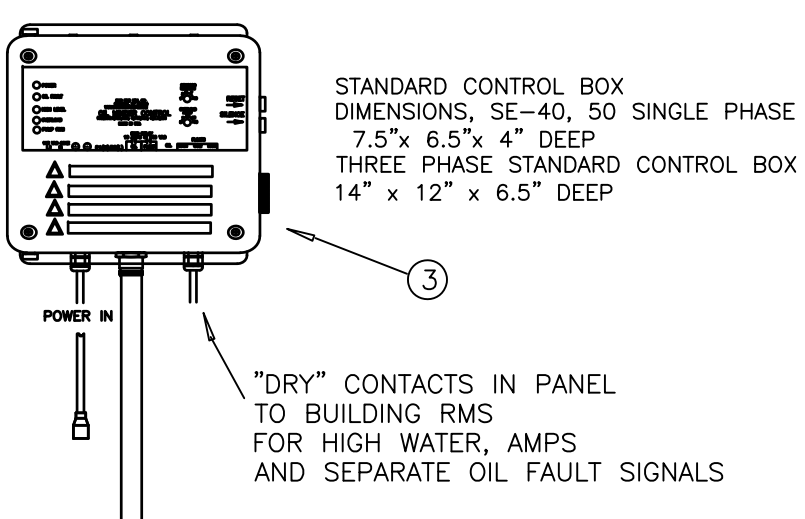


SP-1	STANCOR	SE-50 0/M ELV	ELEVATOR PIT SUMP PUMP: HEAVY DUTY SUBMERSIBLE EFFLUENT PUMP, 0.5 HP, 115V/1PH, 50 GPM @ 20' TDH. SOLID STATE OIL MINDER CONTROL SYSTEM IN GASKETED NEMA 4X ENCLOSURE. 16' DIRECT WIRE CABLES FOR FLOATS, OIL MINDER PROBE AND POWER.
------	---------	---------------	---

1. STANCOR MODEL SE-50 0/M ELV SUBMERSIBLE EFFLUENT PUMP 0.5 HP, 115 VOLT, 3600 RPM, 2" DISCHARGE CONNECTION (SHOWN AS EXAMPLE)
2. CHECK VALVE (2")
3. STANCOR OIL-MINDER 115V, 18 CONTROL SYSTEM WITH BUILT-IN AUDIBLE AND VISUAL ALARM WHEN PUMP DOES NOT RUN DUE TO OIL IN PIT OR HIGH LIQUID OR HIGH AMPERAGE CONDITION. PROVIDE SILENCING BUTTON FOR AUDIBLE ALARM BUILT INTO PANEL. PANEL SHALL HAVE TWO CONTACTS FOR A REMOTE ALARM LOCATION (ONE EACH FOR OIL AND HIGH WATER OR AMPERAGE ALERT).
4. JUNCTION BOX AVAILABLE AS A FACTORY OPTION WITH OR WITHOUT A LOCKABLE PUMP DISCONNECT SWITCH
5. ALL BURIED PUMP PRESSURE DISCHARGE PIPING SHALL BE PROTECTED WITH TAPECOAT CT CORROSION PROTECTION TAPE
6. PUMP CABLE, PROBE CABLE, HIGH LIQUID ALARM CABLE, AND PUMP "ON" FLOAT CABLE (16 FT. LENGTHS STANDARD)
7. HIGH LIQUID ALARM FLOAT WITH CLAMP DEVICE TO MOUNT TO PUMP DISCHARGE PIPING
8. PUMP ON FLOAT
9. OIL SENSING PROBE

ITEMS 1, 3, 6, 7, 8 AND 9 PROVIDED BY STANCOR AS A STANDARD PACKAGE

STANCOR "JR" AND DIRECT WIRE ELEVATOR OIL-MINDER SYSTEMS



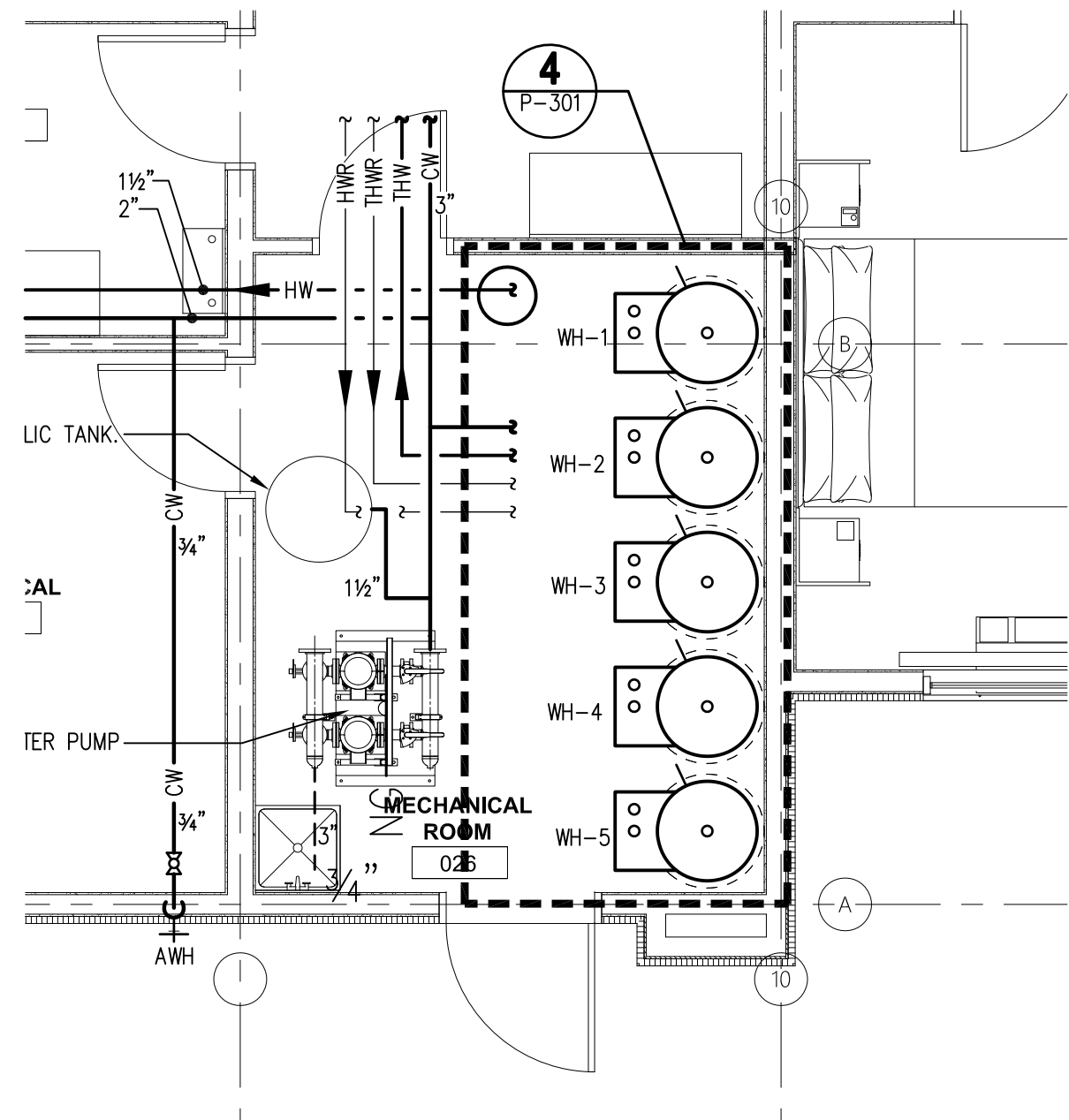
SP-1 ELEVATOR SUMP PUMP
SCALE: NONE

PUMP INFORMATION

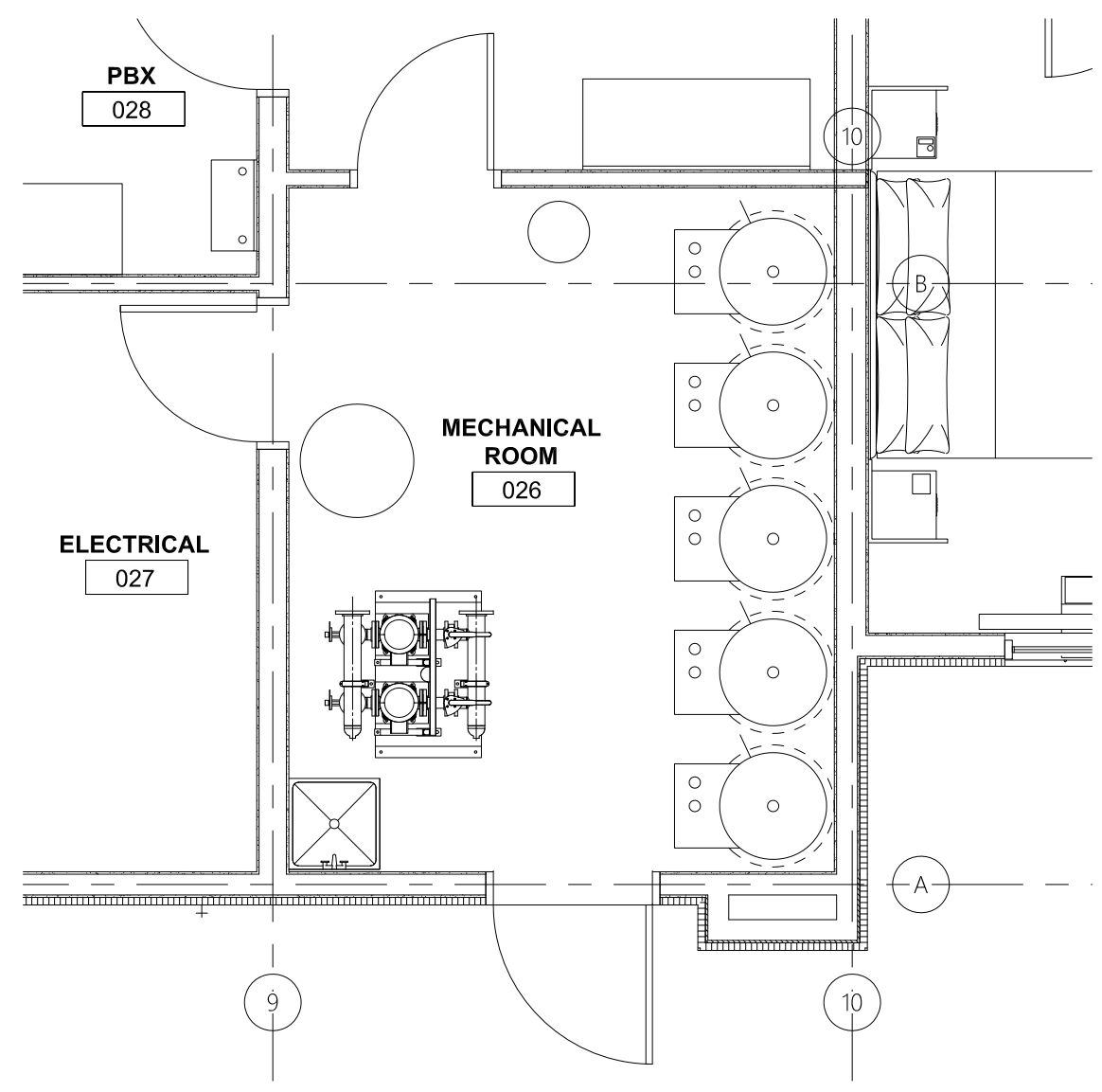
Type:	3 Sump Pump(s)
Model NO:	SE-50
Rating:	74 MAX. GPM 37 MAX. TDH
Motor:	5 HP 3600 RPM
Elec:	1 PH 60 HZ 115v
Elec:	8 FL AMPS

DISCHARGE PIPE

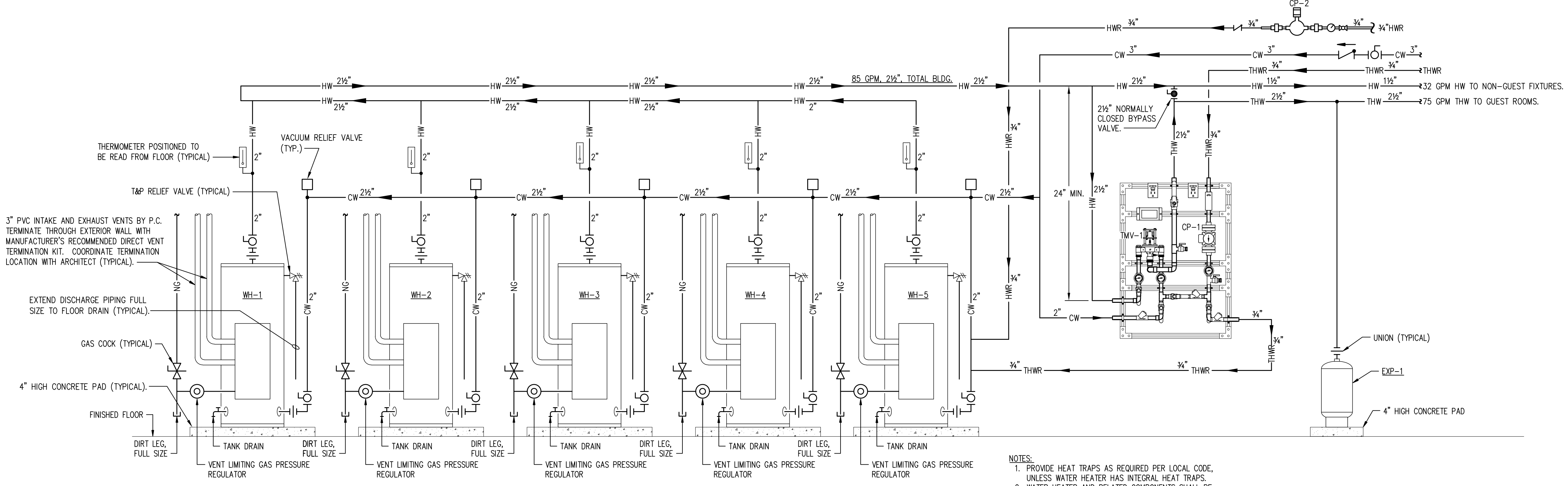
<input type="checkbox"/>	304 Stainless Steel
<input type="checkbox"/>	Sch40 Galvanized Steel
<input type="checkbox"/>	Sch80 PVC Pipe
<input type="checkbox"/>	1-1/2"
<input type="checkbox"/>	2"
<input type="checkbox"/>	3"



MECHANICAL ROOM 026 PLUMBING SUPPLY PLAN
SCALE: 1/8"=1'-0"



MECHANICAL ROOM 026 PLUMBING WASTE PLAN
SCALE: 1/8"=1'-0"



WH-1, WH-2, WH-3, WH-4, WH-5 GAS WATER HEATER SCHEMATIC
SCALE: NONE

NOTE:
PIPE WATER HEATERS IN PARALLEL AS SHOWN USING A REVERSE RETURN (1ST IN LAST OUT) CONFIGURATION.

- NOTES:**
1. PROVIDE HEAT TRAPS AS REQUIRED PER LOCAL CODE, UNLESS WATER HEATER HAS INTEGRAL HEAT TRAPS.
 2. WATER HEATER AND RELATED COMPONENTS SHALL BE INSTALLED PER CODE AND MANUFACTURER'S INSTRUCTIONS.
 3. PROVIDE NEUTRALIZATION KIT FOR CONDENSATE

PLUMBING LEGEND

— CW —	COLD WATER
— CD —	COLD WATER BURIED
— HW —	140°F HOT WATER
— THW —	125°F TEMPERED HOT WATER
— HWR —	HOT WATER RETURN
— THWR —	TEMPERED HOT WATER RETURN
— SS —	SANITARY SEWER
— SS —	SANITARY SEWER BURIED OR BELOW FLOOR
— GW —	GREASE INTERCEPTOR WASTE
— NS —	NATURAL GAS
— PRDC —	PRIMARY ROOF DRAIN CONDUCTOR
— C —	CONDENSATE DRAINAGE
— PD —	PUMPED DRAIN

THIS DRAWING IS THE PROPERTY OF COR3 DESIGN, LLC AND IS COPY RIGHT PROTECTED. IT IS NOT TO BE REPRODUCED OR COPIED IN WHOLE OR IN PART. IT IS ONLY TO BE USED FOR THE PROJECT AND SITE SPECIFICALLY IDENTIFIED HEREIN AND IS NOT TO BE USED FOR ANY OTHER PROJECT. IT IS TO BE RETURNED UPON REQUEST.

