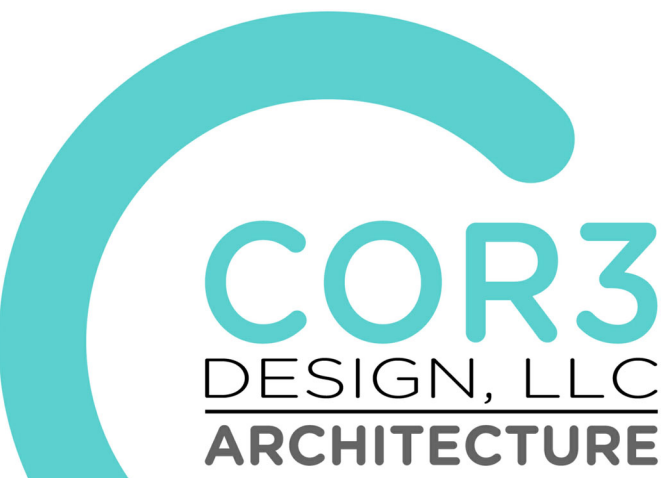


EQUIPMENT SCHEDULE - DRY STORAGE				
ITEM	QTY	DESCRIPTION	MANUFACTURER	MODEL
01	1	MOBILE REACH-IN FREEZER	TRUE	T-49F-HC
02	2	MOBILE REACH-IN REFRIGERATOR	TRUE	TS-49-HC
03	1	HAND SINK W/ SOAP AND TOWEL DISPENSER	ADVANCE TABCO	7-PS-87
04	1	MOBILE WORK TABLE	CUSTOM FABRICATED	
05	1	UNDERCOUNTER DISH MACHINE (HIGH TEMP)	CHAMPION	UH-100B
06	1	DISH TABLE RACK SHELF	ADVANCE TABCO	DT-48R-11
07	3	WALL SHELF (HIGH MOUNT)	METRO	1WD24K3/2WD24K3/2436NK3
08	1	DISH / POT WASHING SINKS	CUSTOM FABRICATED	
09	1	PRE-RINSE W/FAUCET	T&S BRASS	B-2278-A12-E1
10	1	EYE WASH STATION	HAWS	7360B1-7460BT
11	1	SPARE NUMBER		
12	1	UTENSIL RACK W/ SHELF	ADVANCE TABCO	PS-12-60
13	1	WORKTABLE WITH SINK	CUSTOM FABRICATED	
14	1	COFFEE MAKER (OPERATOR FURNISHED)	FETCO	CBS-2152XTS
15	1	WALL SHELF (HIGH MOUNT)	METRO	1WD24K3/2436NK3
16	1	CONVECTION OVEN (VENTLESS)	MOFFAT (TURBOFAN)	E33D5H2
17	2	WALL SHELF	CUSTOM FABRICATED	
18	1	MOBILE REACH-IN FREEZER	TRUE	T-23F-HC
19	3	STORAGE SHELVING	METRO	METROMAX Q
20	1	CONVECTION OVEN (VENTLESS) (OPTIONAL)	MOFFAT (TURBOFAN)	E33D5H2
21	1	SPARE NUMBER		
22	1	MICROWAVE OVEN WITH SHELF	AMANA	HDC12A2/BMS2024
23	1	BATTER MIX STARTER KIT (OPERATOR FURNISHED)		
24	1	WAFFLE MAKER (BY VENDOR)		
25	1	WAFFLE MAKER (FUTURE) (BY VENDOR)		
26	1	CONVEYOR TOASTER	APIW WYOTT	ECO 4000-350L-HILTON
27	1	DISPLAY SHOWCASE	EQUIPEX	WD780B-2/1
28	1	JUICE DISPENSER (BY VENDOR)	NESTLE VITALITY	EXPRESS
29	1	WARMING KETTLE (OPTIONAL)	VOLLRATH	72017
30	1	CEREAL DISPENSER	ROSETTO	EZP2135
31		NOT USED		
32	1	SPARE NUMBER		
33	1	SPARE NUMBER		
34	1	YOGURT DISPENSER (BY VENDOR)	PERFECT PARFAIT	PPHQ1BK
35	1	REACH-IN DISPLAY FREEZER	TRUE	GDM-23F-HC-TSL01
36	1	REACH-IN DISPLAY REFRIGERATOR	TRUE	GDM-49-HC-TSL01
37	1	WATER DISPENSER	MARCO	FR11A HCS
38	2	COFFEE DISPENSER (OPERATOR FURNISHED)	FETCO	D449
39	1	WARMING KETTLE (DROP-IN)	VOLLRATH	74701D



COR3 Design, LLC

Commercial, Office, Retail, Restaurant, Real Estate Development

125 Rhett Street
Suite 101
Greenville, SC 29601

Phone: 864.451.5288

Fax: 864.990.3085

www.cor3design.com

Consultants:

STRUCTURAL

Taylor and Viola Structural Engineers
PO Box 2616
Hickory, NC 28603
828.328.6331

PLUMBING

LWI Consulting Engineers
870 Cleveland St, STE 1D
Greenville, SC 29601
864.271.6535

MECHANICAL

LWI Consulting Engineers
870 Cleveland St, STE 1D
Greenville, SC 29601
864.271.6535

ELECTRICAL

Matrix Engineering, INC
912 S Pine Street
Spartanburg, SC 29302
864.583.6274

Project Title :

HOME 2 SUITES
GREENWOOD SC
475 HOSPITALITY BLVD,
GREENWOOD, SC 29649

Client Logo:



Seals :



Revisions :

A 10.16.2024 Issue For Permit
03.20.2025 100% Issue For Hilton

Project Number :

23112

Phase :

CD

Date :

04.22.2024

Drawn By :

-

Checked By :

-

Sheet Number:

FS-101

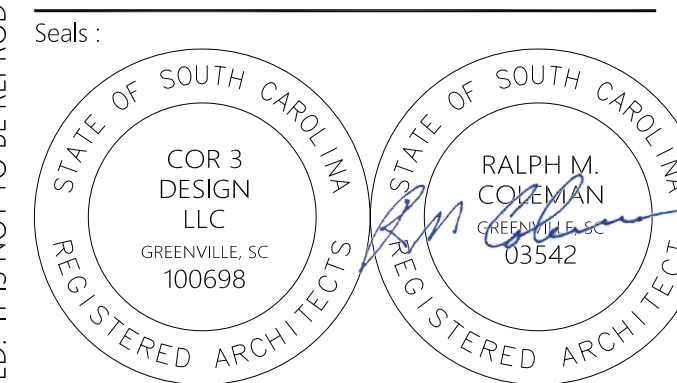
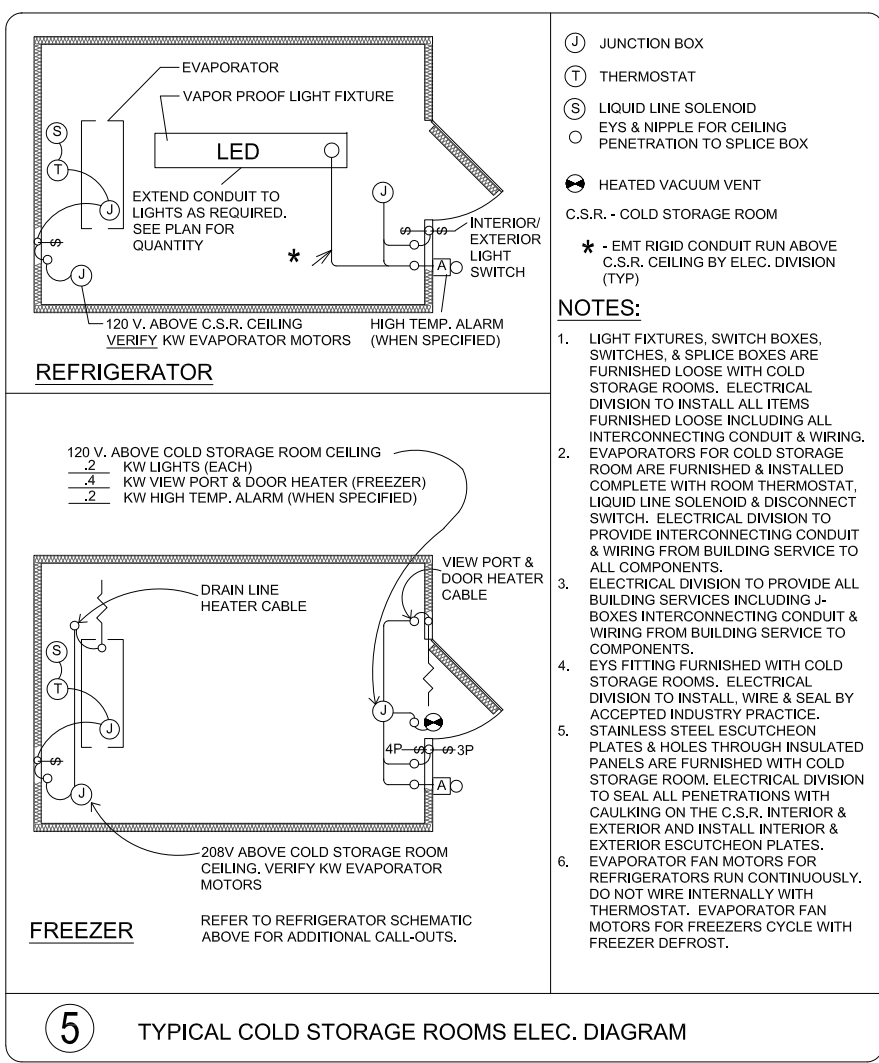
Sheet Title :

EQUIPMENT PLAN STANDARD

This architectural floor plan illustrates a restaurant layout with various furniture and fixtures identified by numbered callouts (01-39). The plan is divided into several functional areas:

- Top Section (Bar/Service Area):** Features a long bar with stools (01, 02, 14, 16, 20, 22, 901) and a service counter (37, 901). There are also two restrooms (01, 02) and a storage area (36, 35).
- Left Section (Kitchen/Prep Area):** Includes a kitchen area with a sink (28, 34), stove (39), and various storage units (24, 25, 26, 27, 29).
- Right Section (Dining Area):** Contains a large dining area with tables and chairs (01, 02, 14, 16, 20, 22, 901). There is also a staircase (05) and a storage area (36, 35).
- Bottom Section (Entrance/Waiting Area):** Features a large open space with a long table and chairs (01, 02, 14, 16, 20, 22, 901) and a storage area (36, 35).

The plan uses dashed lines to indicate the placement of furniture and fixtures, and solid lines to show the structural layout of the building.

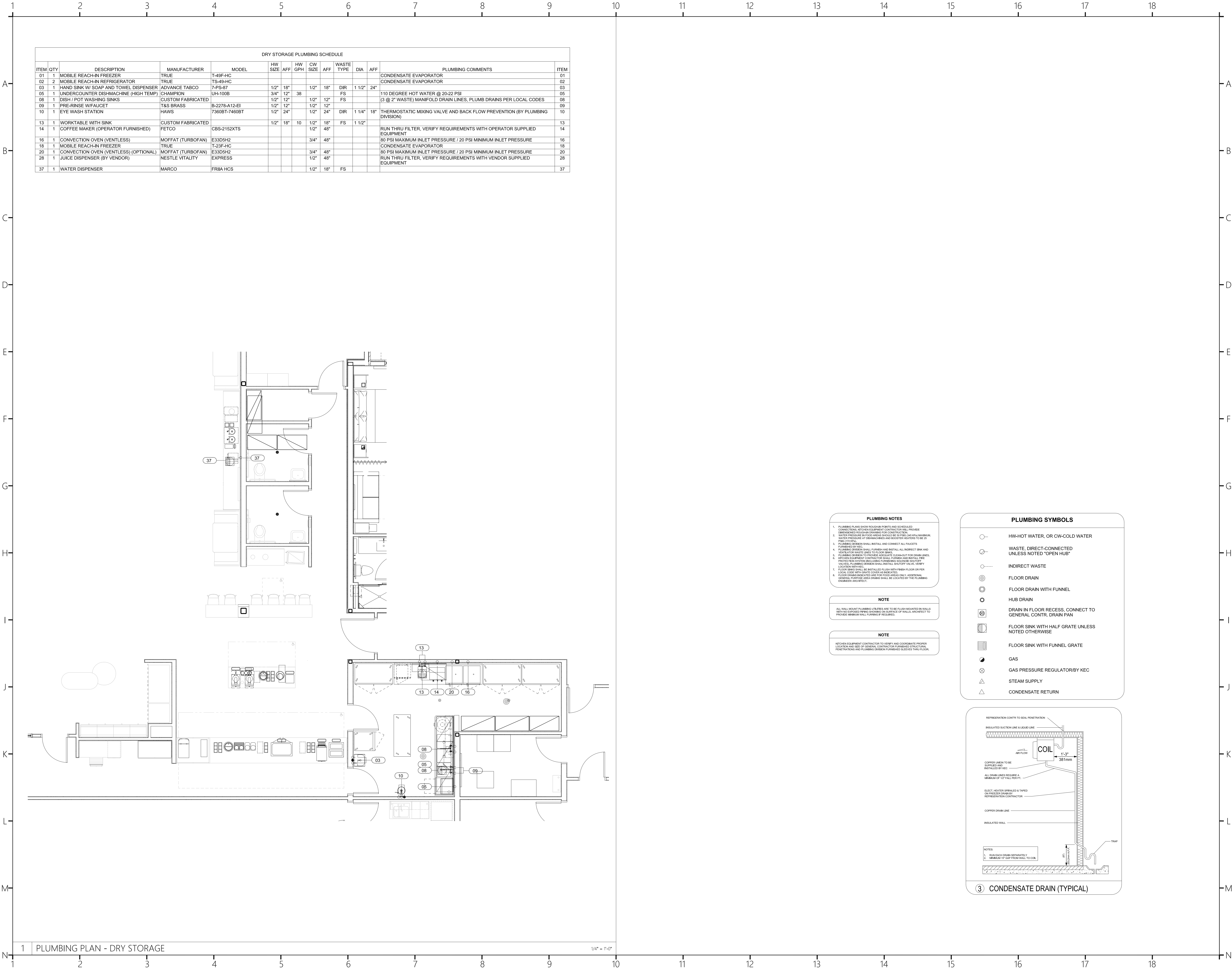
[illegible]

Revisions :	
	10.16.2024 Issue For Permit
A	03.20.2025 100% Issue For Hilti

Project Number :
23112
Phase :
CD
Date :
04.22.2024
Drawn By :
-
Checked By :
-
Sheet Number:

FS-102

Sheet Title :
ELECTRICAL PLAN - STANDARD



- PLUMBING NOTES**
- PLUMBING PLANS SHOW HOUGHAN POINTS AND SCHEDULED CONNECTIONS. OTHER EQUIPMENT CONTRACTOR WILL PROVIDE DIMENSIONS FOR DRAIN DRAINS FOR CONSTRUCTION.
 - WATER PRESSURE IN THIS AREA SHALL BE 80 PSI MAXIMUM. WATER PRESSURE AT THE MAINS AND BOOSTER STATIONS TO BE 25 PSI (17.2 PSI).
 - PLUMBING DIVISION SHALL INSTALL AND CONNECT ALL FAUCETS.
 - PLUMBING DIVISION SHALL PLUMB AND INSTALL ALL INDIRECT DRINK AND WASTE AND WASTE LINES TO CLOCK SINKS.
 - PLUMBING DIVISION TO PROVIDE ACCURATE CLEANOUT FOR DRAIN LINES. OTHER EQUIPMENT CONTRACTOR SHALL FURNISH AND INSTALL BEE PIPES FOR THE FOLLOWING: FURNISHING SOLID LINE SHUTOFF VALVES. PLUMBING DIVISION SHALL INSTALL SHUTOFF VALVE, VERIFY LOCAL CODE WITH GRATE COVER IS INDICATED.
 - FLOOR DRAIN SHALL BE INSTALLED FLUSH WITH FRESH FLOOR OR PER LOCAL CODE WITH GRATE COVER IS INDICATED.
 - LOCAL DRAIN RESULTS ARE FOR FLOOR AREA ONLY. ADDITIONAL GENERAL PURPOSE AREA DRAINS SHALL BE LOCATED BY THE PLUMBING DIVISION ARCHITECT.

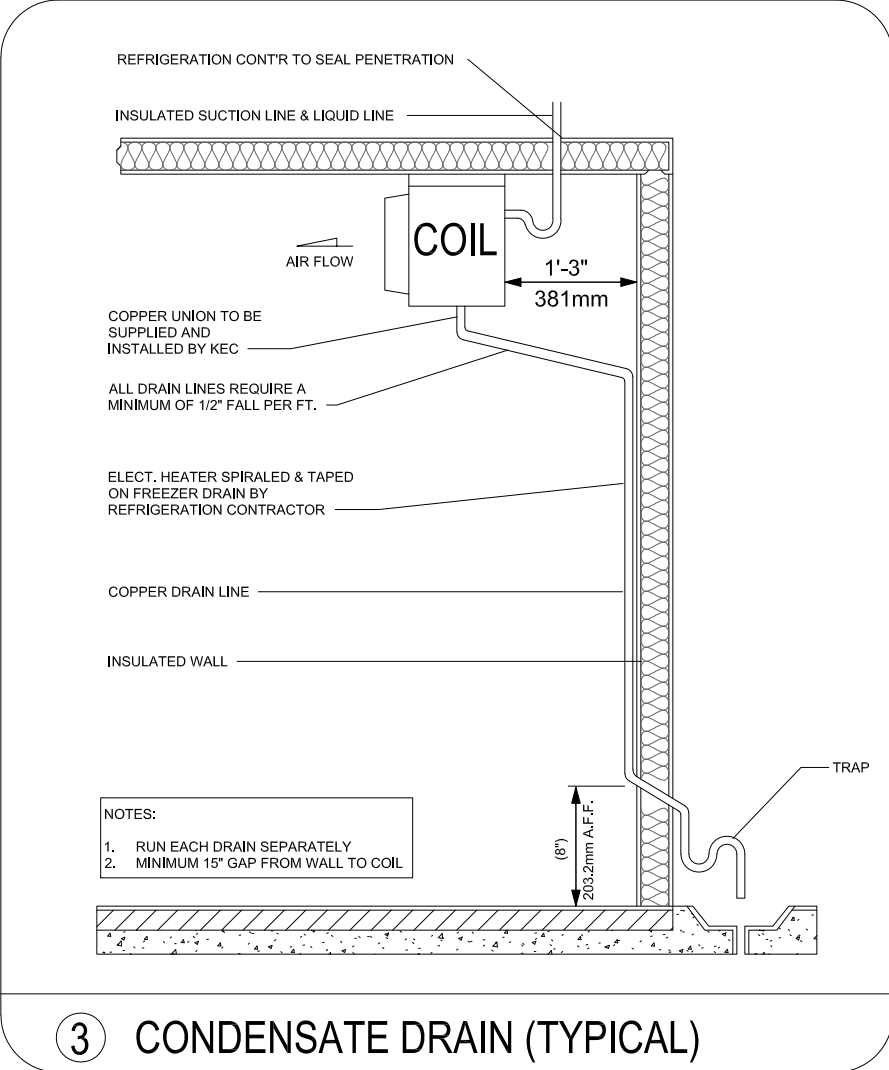
NOTE

ALL WALL MOUNT PLUMBING UTILITIES ARE TO BE FLUSH MOUNTED BY WALLS WITH NO EXPOSED DRIPS SHOWING ON SURFACE OR WALLS. ARCHITECT TO PROVIDE MINIMUM WALL FINISHES IF REQUIRED.

NOTE

KITCHEN EQUIPMENT CONTRACTOR TO VERIFY AND COORDINATE PREPARE LOCATION AND SIZE OF GENERAL CONTRACTOR FURNISHED STRUCTURAL PENETRATIONS AND PLUMBING DIVISION FURNISHED ELEVATED THRU FLOOR.

- PLUMBING SYMBOLS**
- HW-HOT WATER, OR CW-COLD WATER
 - WASTE, DIRECT-CONNECTED UNLESS NOTED "OPEN HUB"
 - INDIRECT WASTE
 - FLOOR DRAIN
 - FLOOR DRAIN WITH FUNNEL
 - HUB DRAIN
 - DRAIN IN FLOOR RECESS, CONNECT TO GENERAL CONTR. DRAIN PAN
 - FLOOR SINK WITH HALF GRATE UNLESS NOTED OTHERWISE
 - FLOOR SINK WITH FUNNEL GRATE
 - GAS
 - GAS PRESSURE REGULATOR/BY KEC
 - STEAM SUPPLY
 - CONDENSATE RETURN



COR3 Design, LLC

Commercial, Office, Retail, Restaurant, Real Estate Development

125 Rhett Street
Suite 101
Greenville, SC 29601

Phone: 864.451.5288
Fax: 864.990.3085
www.cor3design.com

Consultants:

STRUCTURAL

Taylor and Viola Structural Engineers
PO Box 2616
Hickory, NC 28603
828.328.6331

PLUMBING

LWI Consulting Engineers
870 Cleveland St, STE 1D
Greenville, SC 29601
864.271.6535

MECHANICAL

LWI Consulting Engineers
870 Cleveland St, STE 1D
Greenville, SC 29601
864.271.6535

ELECTRICAL

Matrix Engineering, INC
912 S Pine Street
Spartanburg, SC 29302
864.583.6274

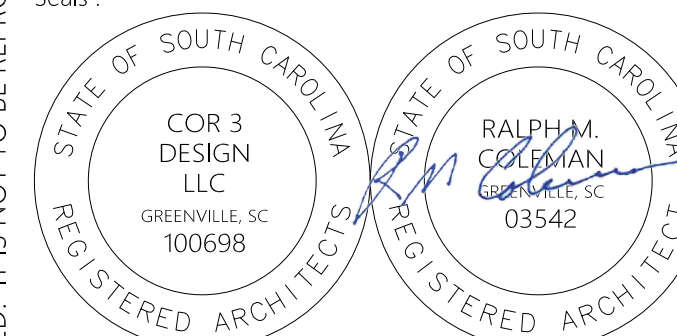
Project Title:

**HOME 2 SUITES
GREENWOOD SC**
475 HOSPITALITY BLVD,
GREENWOOD, SC 29649

Client Logo:



Seals:



Revisions:

10.16.2024 Issue For Permit
03.20.2025 100% Issue For Hilton

Project Number:

23112

Phase:

CD

Date:

04.22.2024

Drawn By:

-

Checked By:

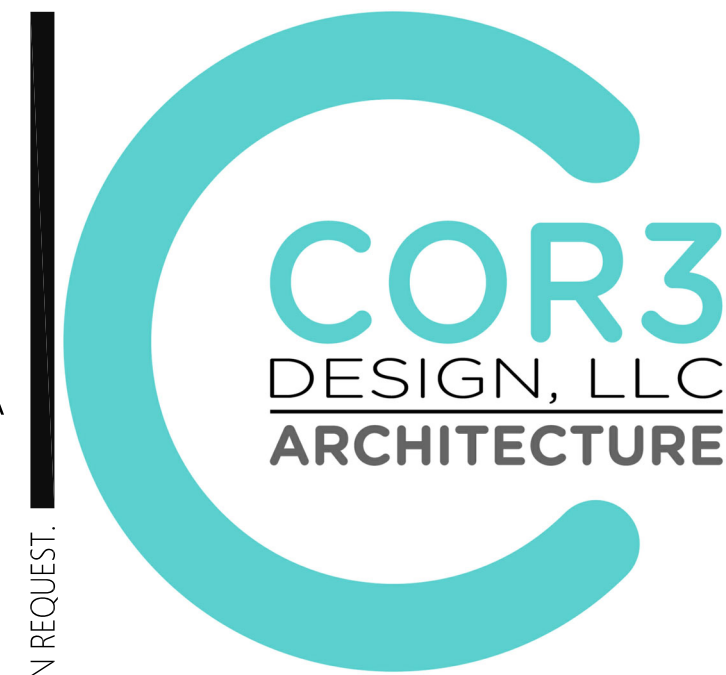
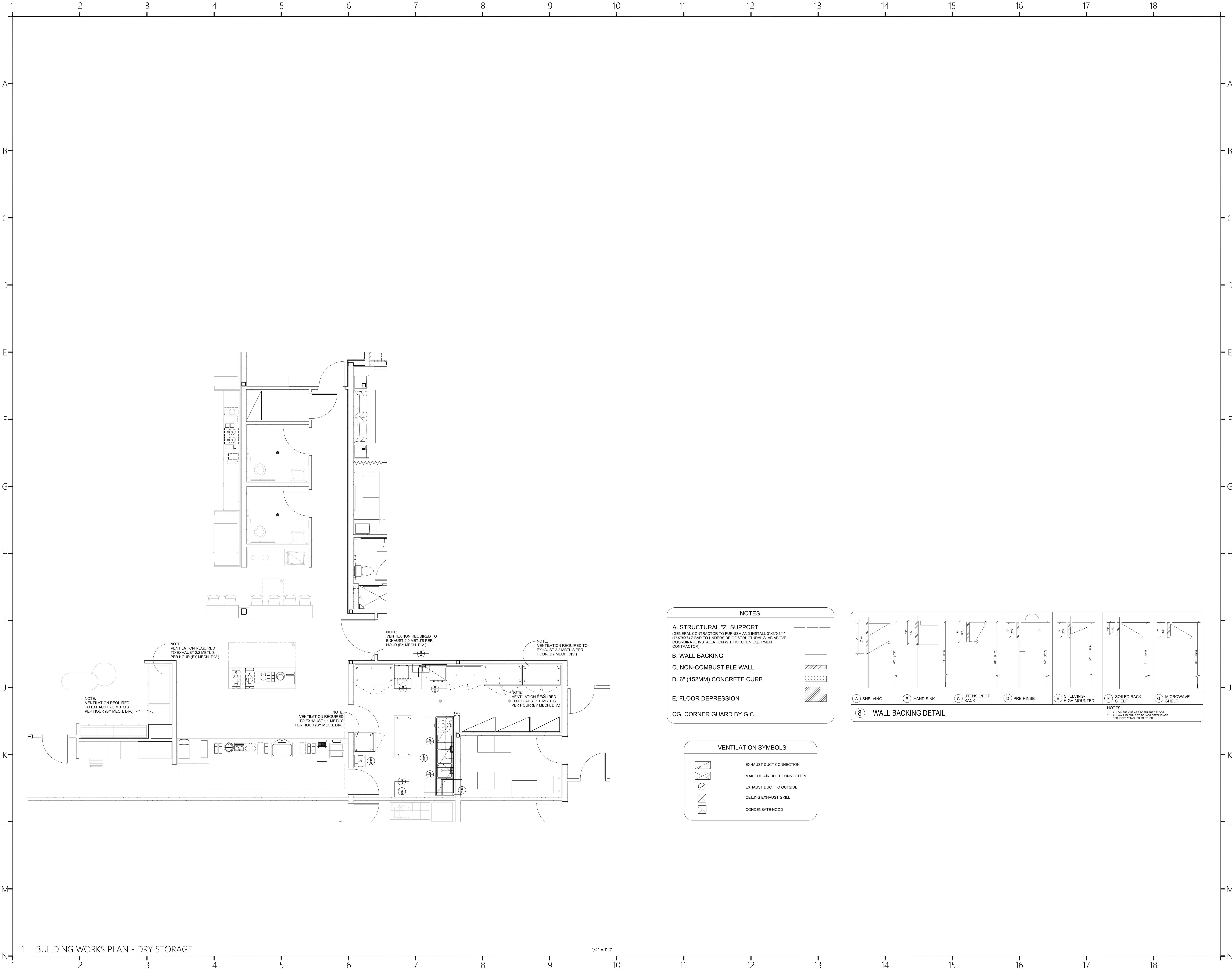
-

Sheet Number:

FS-103

Sheet Title:

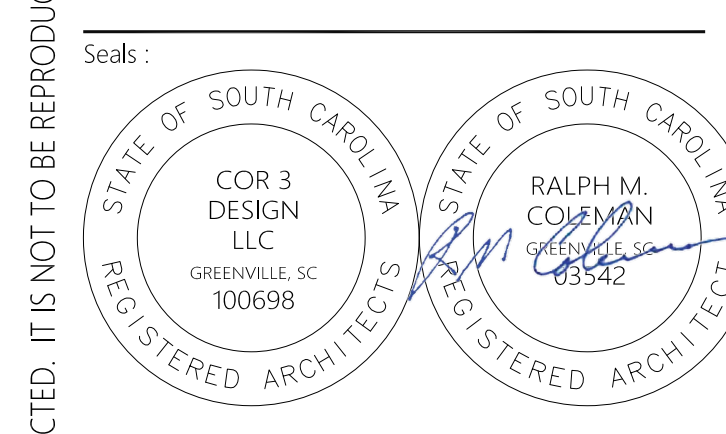
PLUMBING PLAN - STANDARD



COR3 Design, LLC
Commercial, Office, Retail, Restaurant, Real Estate Development
125 Rhett Street
Suite 101
Greenville, SC 29601
Phone: 864.451.5288
Fax: 864.990.3085
www.cor3design.com

Consultants:
STRUCTURAL
Taylor and Viola Structural Engineers
PO Box 2616
Hickory, NC 28603
828.328.6331
PLUMBING
LWI Consulting Engineers
870 Cleveland St, STE 1D
Greenville, SC 29601
864.271.6535
MECHANICAL
LWI Consulting Engineers
870 Cleveland St, STE 1D
Greenville, SC 29601
864.271.6535
ELECTRICAL
Matrix Engineering, INC
912 S Pine Street
Spartanburg, SC 29302
864.583.6274

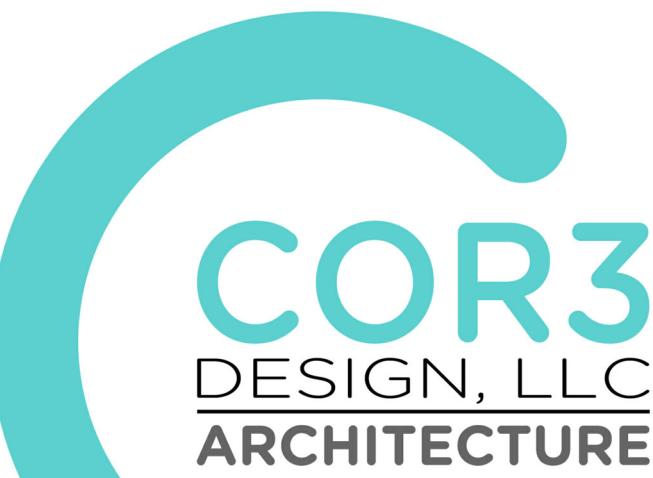
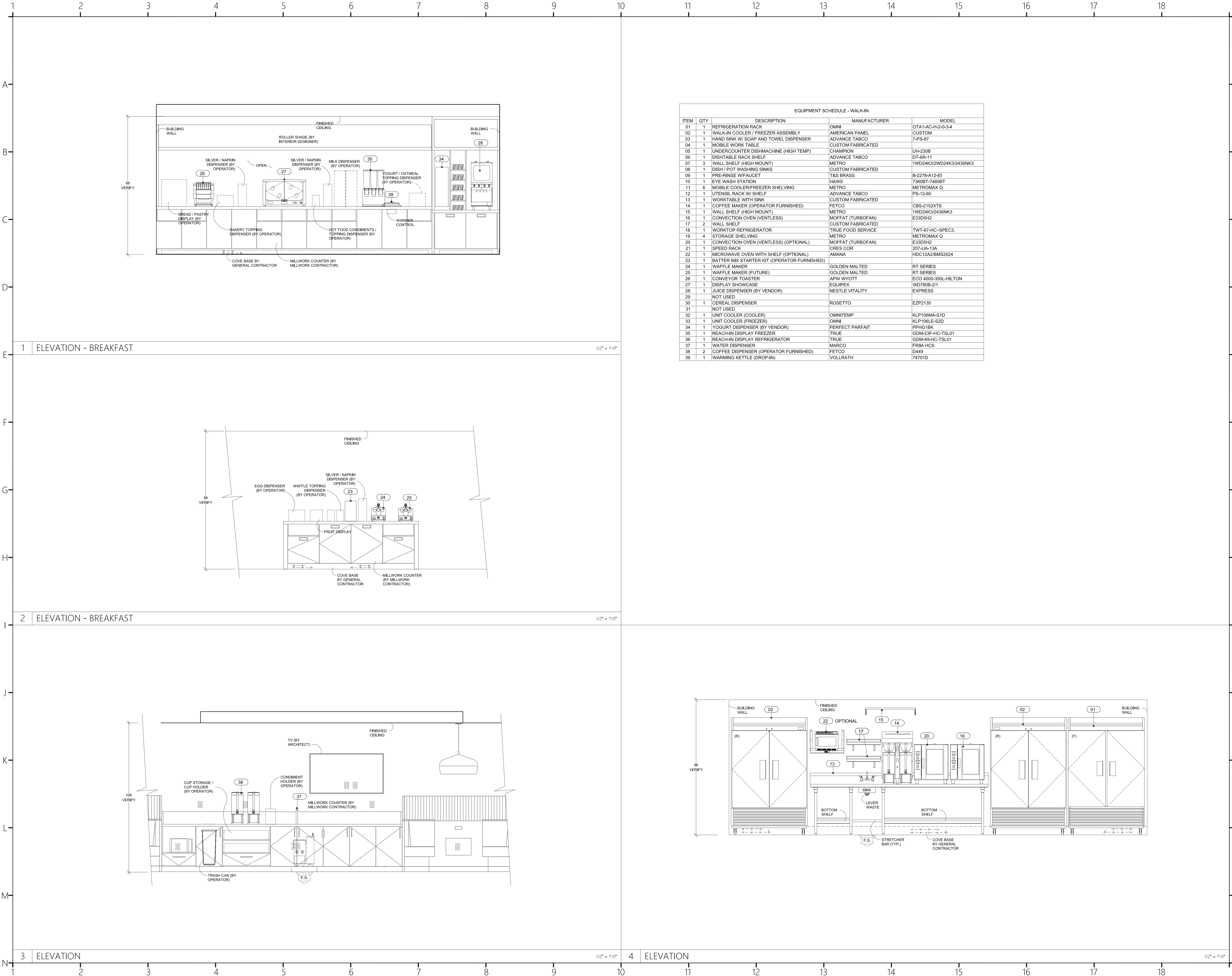
Project Title :
**HOME 2 SUITES
GREENWOOD SC**
475 HOSPITALITY BLVD,
GREENWOOD, SC 29649



Revisions:
A 10.16.2024 Issue For Permit
03.20.2025 100% Issue For Hilton

Project Number :
23112
Phase :
CD
Date :
04.22.2024
Drawn By :
-
Checked By :
-

Sheet Number:
FS-104
Sheet Title :
BUILDING WORKS PLAN - STANDARD



COR3 Design, LLC

Commercial, Office, Retail, Restaurant, Real Estate Development

125 Rhett Street
Suite 101
Greenville, SC 29601

Phone: 864.451.5288

Fax: 864.990.3085

www.cor3design.com

Consultants:

STRUCTURAL

Taylor and Viola Structural Engineers
PO Box 2616
Hickory, NC 28603
828.328.6331

PLUMBING

LWI Consulting Engineers
870 Cleveland St, STE 1D
Greenville, SC 29601
864.271.6535

MECHANICAL

LWI Consulting Engineers
870 Cleveland St, STE 1D
Greenville, SC 29601
864.271.6535

ELECTRICAL

Matrix Engineering, INC
912 S Pine Street
Spartanburg, SC 29302
864.583.6274

Project Title:

HOME 2 SUITES
GREENWOOD SC
475 HOSPITALITY BLVD,
GREENWOOD, SC 29649

Client Logo:



Seals:



Revisions:

A 10.16.2024 Issue For Permit
03.20.2025 100% Issue For Hilton

Project Number:

23112

Phase:

CD

Date:

04.22.2024

Drawn By:

-

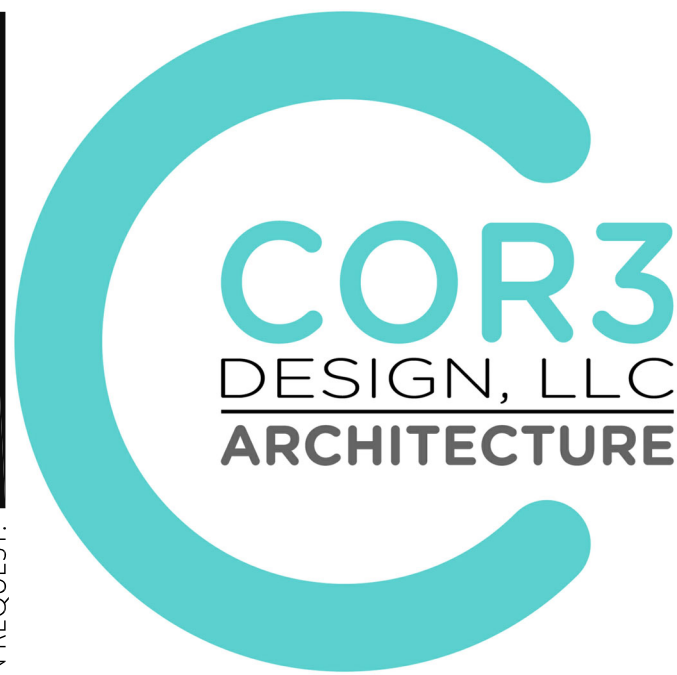
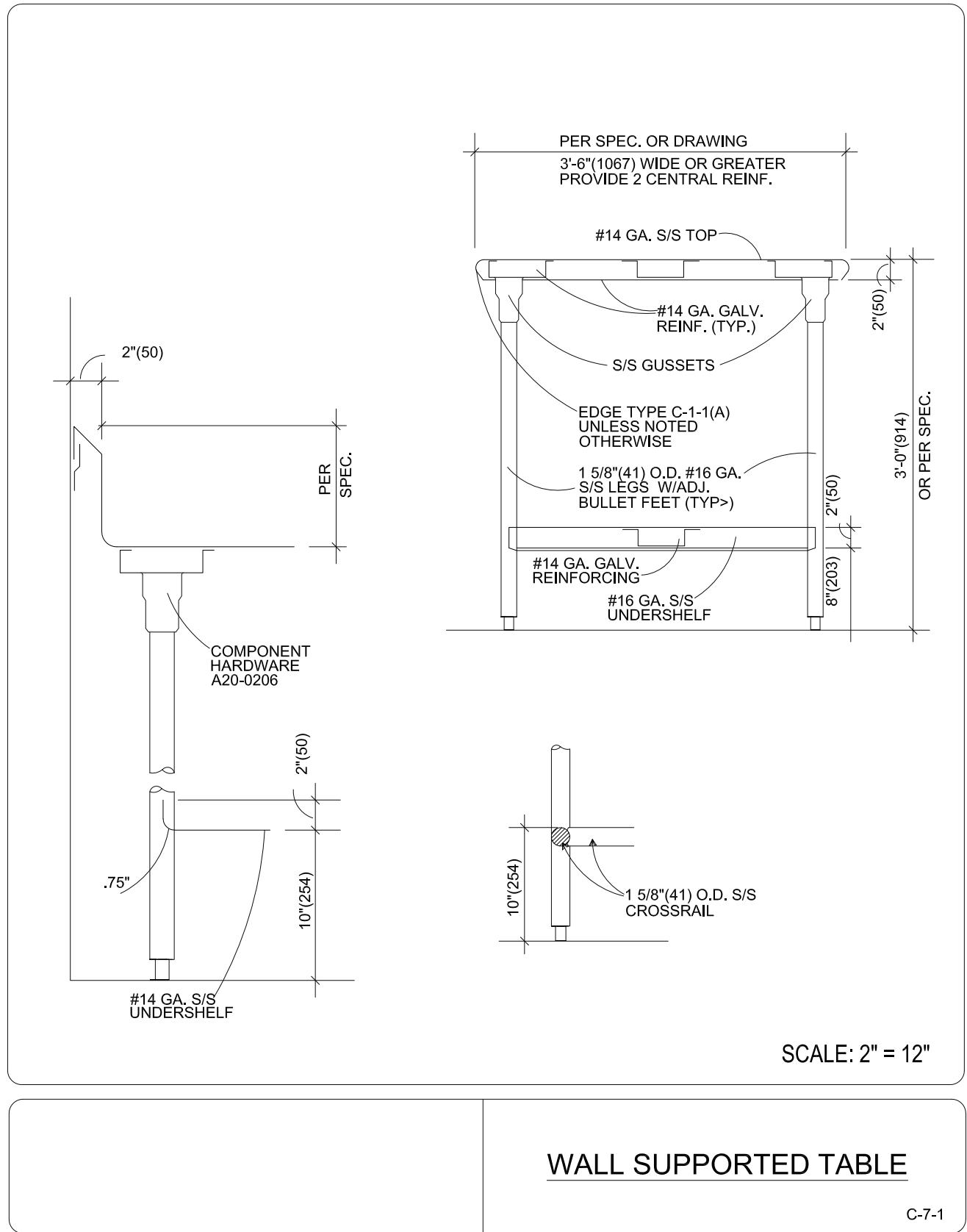
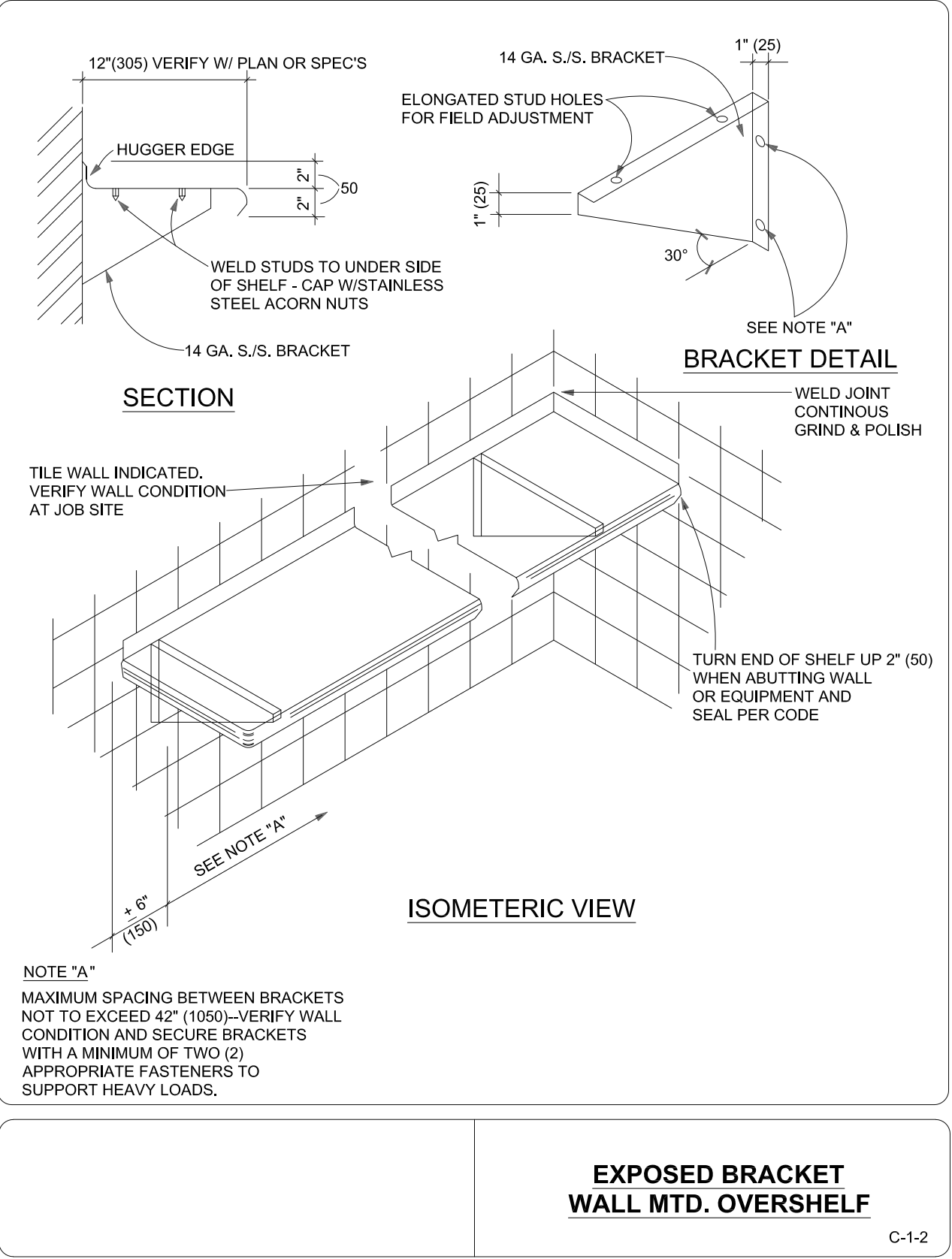
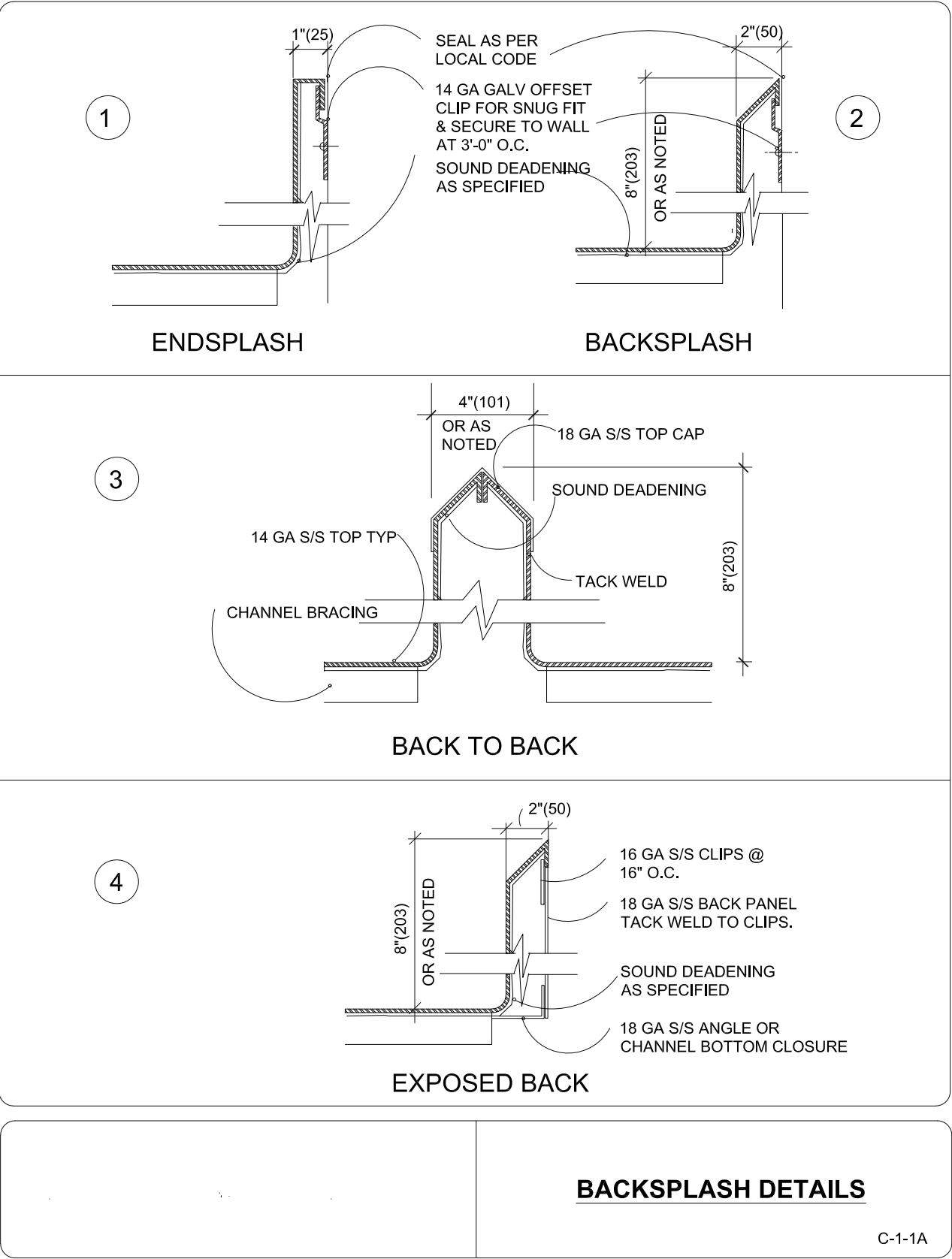
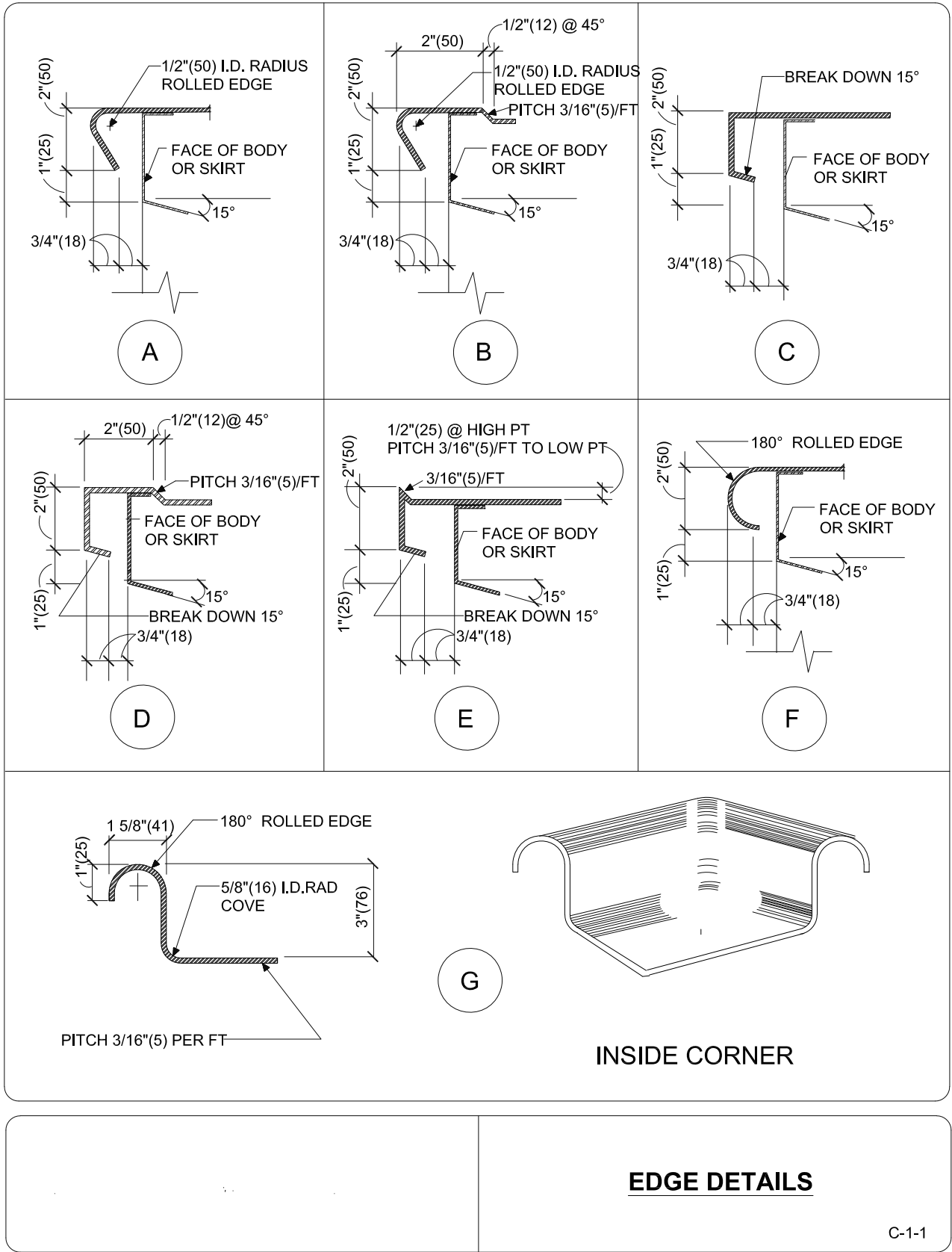
Checked By:

-

Sheet Number:

FS-105
Sheet Title:
ELEVATIONS AND DETAILS -
STANDARD

1
A
B
C
D
E
F
G
H
I
J
K
L
M
N



COR3 Design, LLC
Commercial, Office, Retail, Restaurant, Real Estate Development

125 Rhett Street
Suite 101
Greenville, SC 29601

Phone: 864.451.5288
Fax: 864.990.3085
www.cor3design.com

Consultants:
STRUCTURAL
Taylor and Viola Structural Engineers
PO Box 2616
Hickory, NC 28603
828.328.6331

PLUMBING
LWI Consulting Engineers
870 Cleveland St. STE 1D
Greenville, SC 29601
864.271.6535

MECHANICAL
LWI Consulting Engineers
870 Cleveland St. STE 1D
Greenville, SC 29601
864.271.6535

ELECTRICAL
Matrix Engineering, INC
912 S Pine Street
Spartanburg, SC 29302
864.583.6274

Project Title :
HOME 2 SUITES
GREENWOOD SC
475 HOSPITALITY BLVD,
GREENWOOD, SC 29649

Client Logo:



Revisions :
A 10.16.2024 Issue For Permit
03.20.2025 100% Issue For Hilton

Project Number :
23112
Phase :
CD
Date :
04.22.2024
Drawn By :
-
Checked By :
-

Sheet Number:
FS-106
Sheet Title :
STANDARD DETAILS

THIS DRAWING IS THE PROPERTY OF COR3 DESIGN, LLC. AND IS COPY RIGHT PROTECTED. IT IS NOT TO BE REPRODUCED OR COPIED IN WHOLE OR IN PART. IT IS ONLY TO BE USED FOR THE PROJECT AND SITE SPECIFICALLY IDENTIFIED HEREIN AND IS NOT TO BE USED FOR ANY OTHER PROJECT. IT IS TO BE RETURNED UPON REQUEST.