



COR3 Design, LLC

Commercial, Office, Retail, Restaurant, Real Estate Development

125 Rhett Street
Suite 101
Greenville, SC 29601

Phone: 864.451.5288

Fax: 864.990.3085

www.cor3design.com

Consultants:
STRUCTURAL
Taylor and Viola Structural Engineers
PO Box 2616
Hickory, NC 28603
828.328.6331

PLUMBING
LWI Consulting Engineers
870 Cleveland St, STE 1D
Greenville, SC 29601
864.271.6535

MECHANICAL
LWI Consulting Engineers
870 Cleveland St, STE 1D
Greenville, SC 29601
864.271.6535

ELECTRICAL
Matrix Engineering, INC
912 S Pine Street
Spartanburg, SC 29302
864.583.6274

Project Title:

HOME 2 SUITES
GREENWOOD SC

475 HOSPITALITY BLVD,
GREENWOOD, SC 29649

Client Logo:



Seals:



Revisions:

10.16.2024 Issue For Permit

A 03.20.2025 100% Issue For Hilton

Project Number:

23112

Phase:

CD

Date:

04.22.2024

Drawn By:

NSC

Checked By:

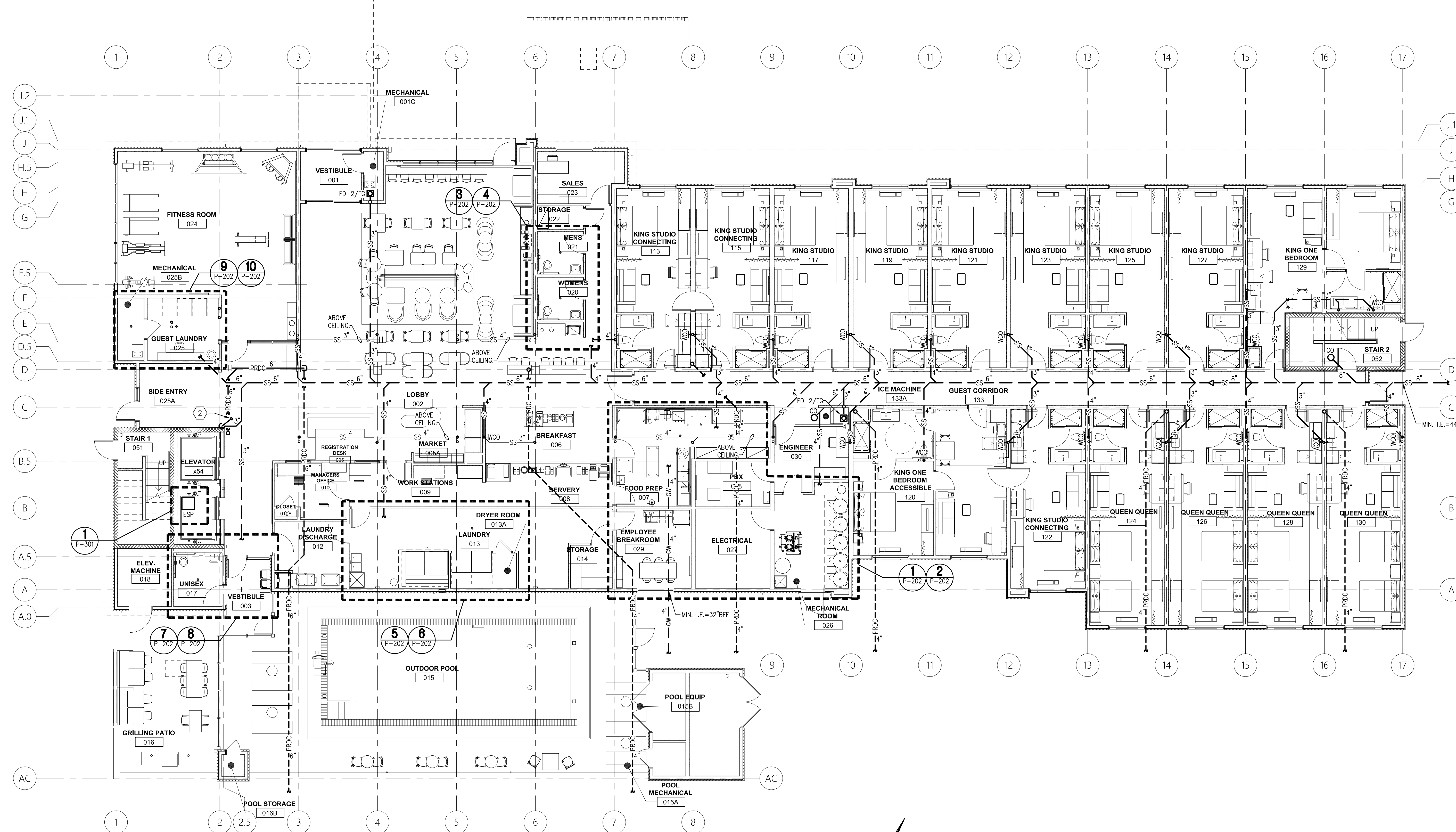
LWI

Sheet Number:

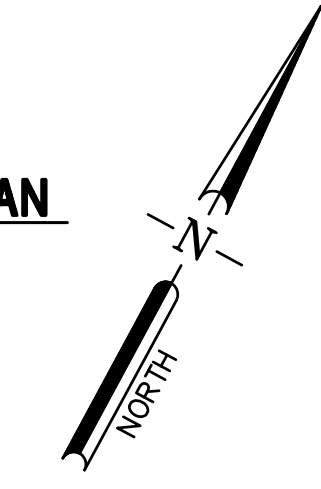
P-101

Sheet Title:

FIRST FLOOR PLUMBING
WASTE PLAN



**FIRST FLOOR
PLUMBING WASTE PLAN**
1 P-101 SCALE: 1/8"=1'-0"



KEY NOTES:

1. TYPICAL FOR ALL SIMILAR FIXTURE LAYOUTS FOR ALL FLOORS.
2. 3"SS FROM ICE MAKER HUB DRAINS ABOVE.

PLUMBING LEGEND	
— CW —	COLD WATER
— CW —	COLD WATER BURIED
— HW —	140°F HOT WATER
— 165HW —	165°F HOT WATER
— THW —	125°F TEMPERED HOT WATER
— HWR —	HOT WATER RETURN
— THWR —	TEMPERED HOT WATER RETURN
— SS —	SANITARY SEWER
— SS —	SANITARY SEWER BURIED OR BELOW FLOOR
— GW —	GREASE INTERCEPTOR WASTE
— —	SANITARY SEWER VENT
— NG —	NATURAL GAS
— PRDC —	PRIMARY ROOF DRAIN CONDUCTOR
— SRDC —	SECONDARY ROOF DRAIN CONDUCTOR
— C —	CONDENSATE DRAINAGE
— PD —	PUMPED DRAIN

THIS DRAWING IS THE PROPERTY OF COR3 DESIGN, LLC AND IS COPY RIGHT PROTECTED. IT IS NOT TO BE REPRODUCED OR COPIED IN WHOLE OR IN PART. IT IS ONLY TO BE USED FOR THE PROJECT AND SITE SPECIFICALLY IDENTIFIED HEREIN AND IS NOT TO BE USED FOR ANY OTHER PROJECT. IT IS TO BE RETURNED UPON REQUEST.



COR3 Design, LLC

Commercial, Office, Retail, Restaurant, Real Estate Development

125 Rhett Street
Suite 101
Greenville, SC 29601

Phone: 864.451.5288
Fax: 864.990.3085

www.cor3design.com

CONSULTANTS:

STRUCTURAL
Taylor and Viola Structural Engineers
PO Box 2616
Hickory, NC 28603
828.328.6331

PLUMBING
LWI Consulting Engineers
870 Cleveland St, STE 1D
Greenville, SC 29601
864.271.6535

MECHANICAL
LWI Consulting Engineers
870 Cleveland St, STE 1D
Greenville, SC 29601
864.271.6535

ELECTRICAL
Matrix Engineering, INC
912 S Pine Street
Spartanburg, SC 29302
864.583.6274

Project Title:
**HOME 2 SUITES
GREENWOOD SC**
475 HOSPITALITY BLVD,
GREENWOOD, SC 29649

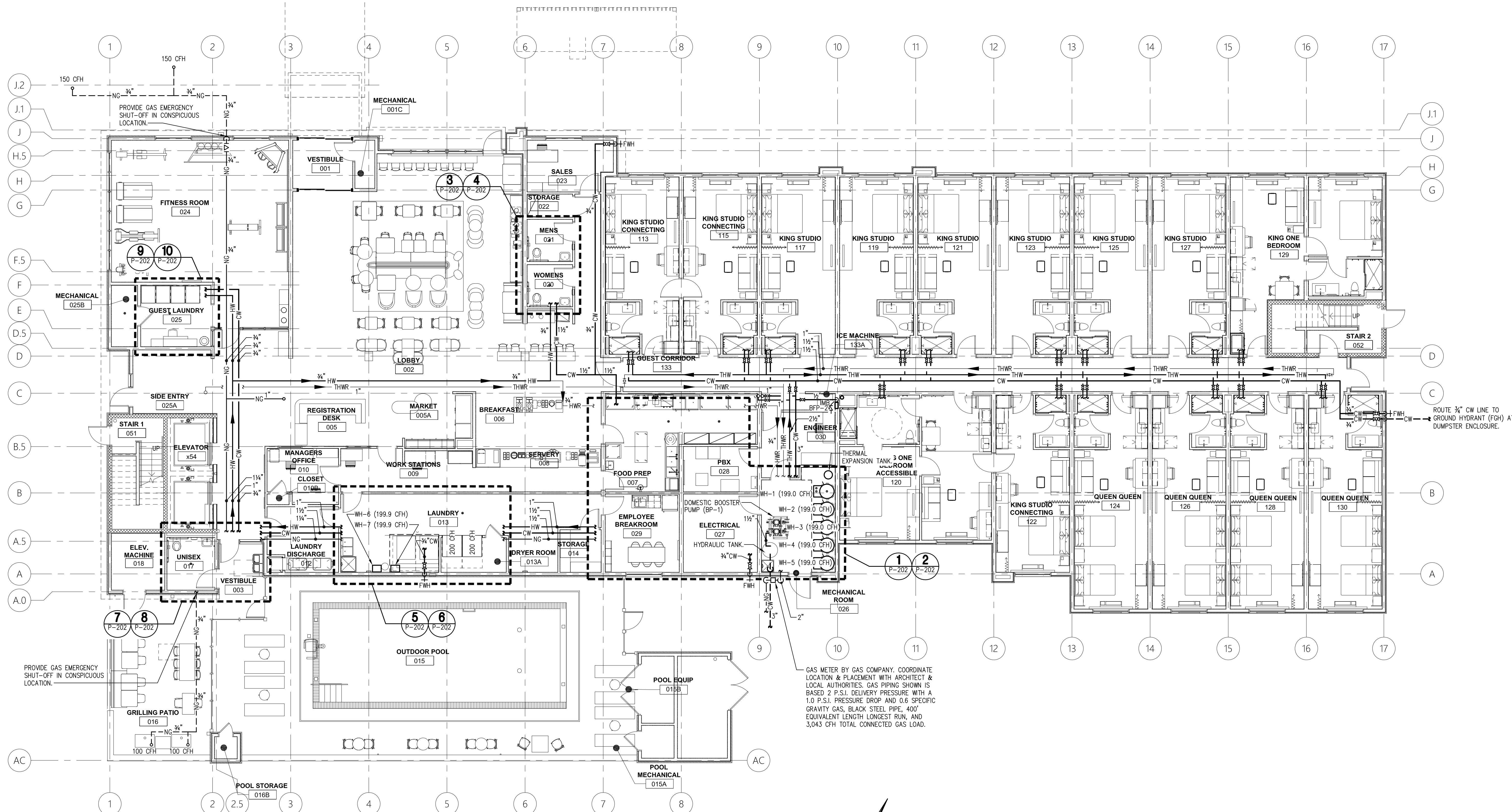
Client Logo:



Revisions:
10.16.2024 Issue For Permit
A 03.20.2025 100% Issue For Hilton

Project Number:
23112
Phase:
CD
Date:
04.22.2024
Drawn By:
NSC
Checked By:
LWI

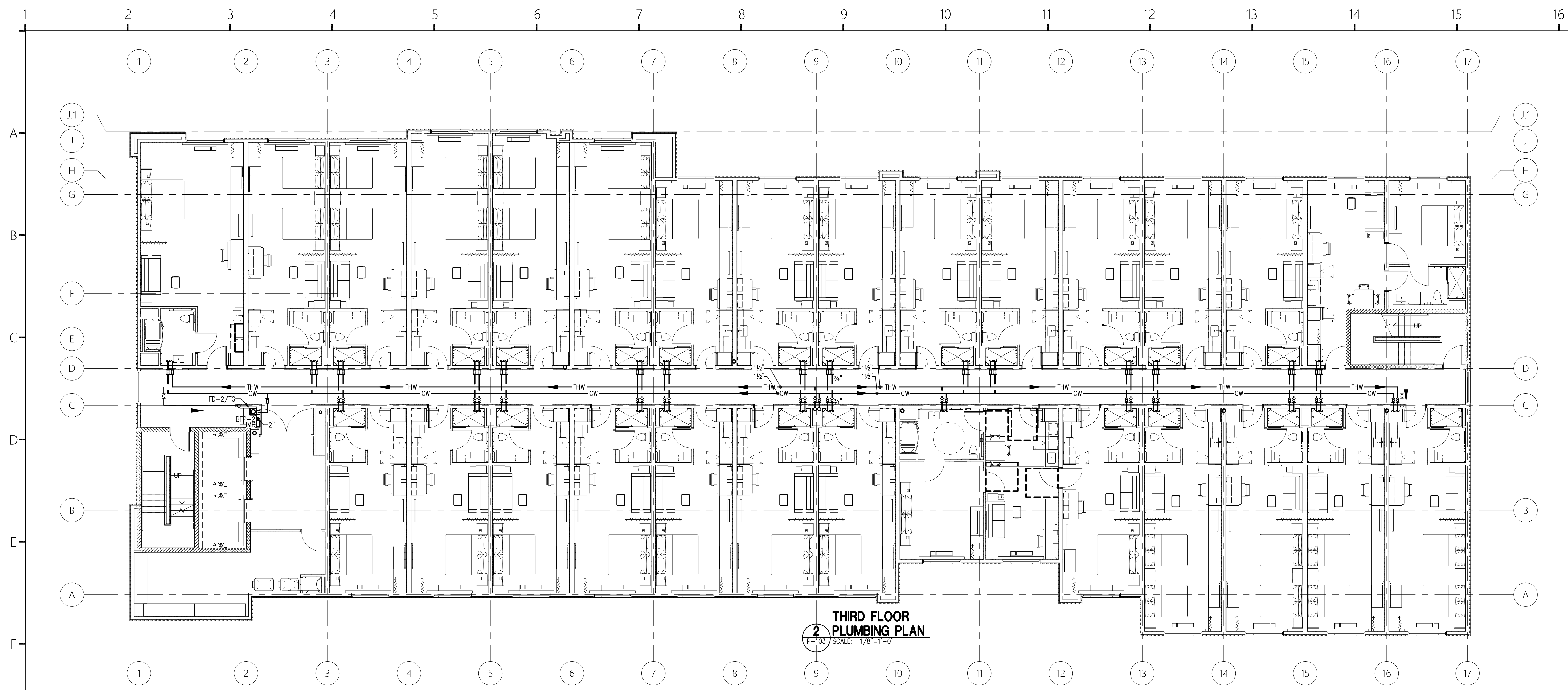
Sheet Number:
P-102
Sheet Title:
FIRST FLOOR PLUMBING
SUPPLY PLAN



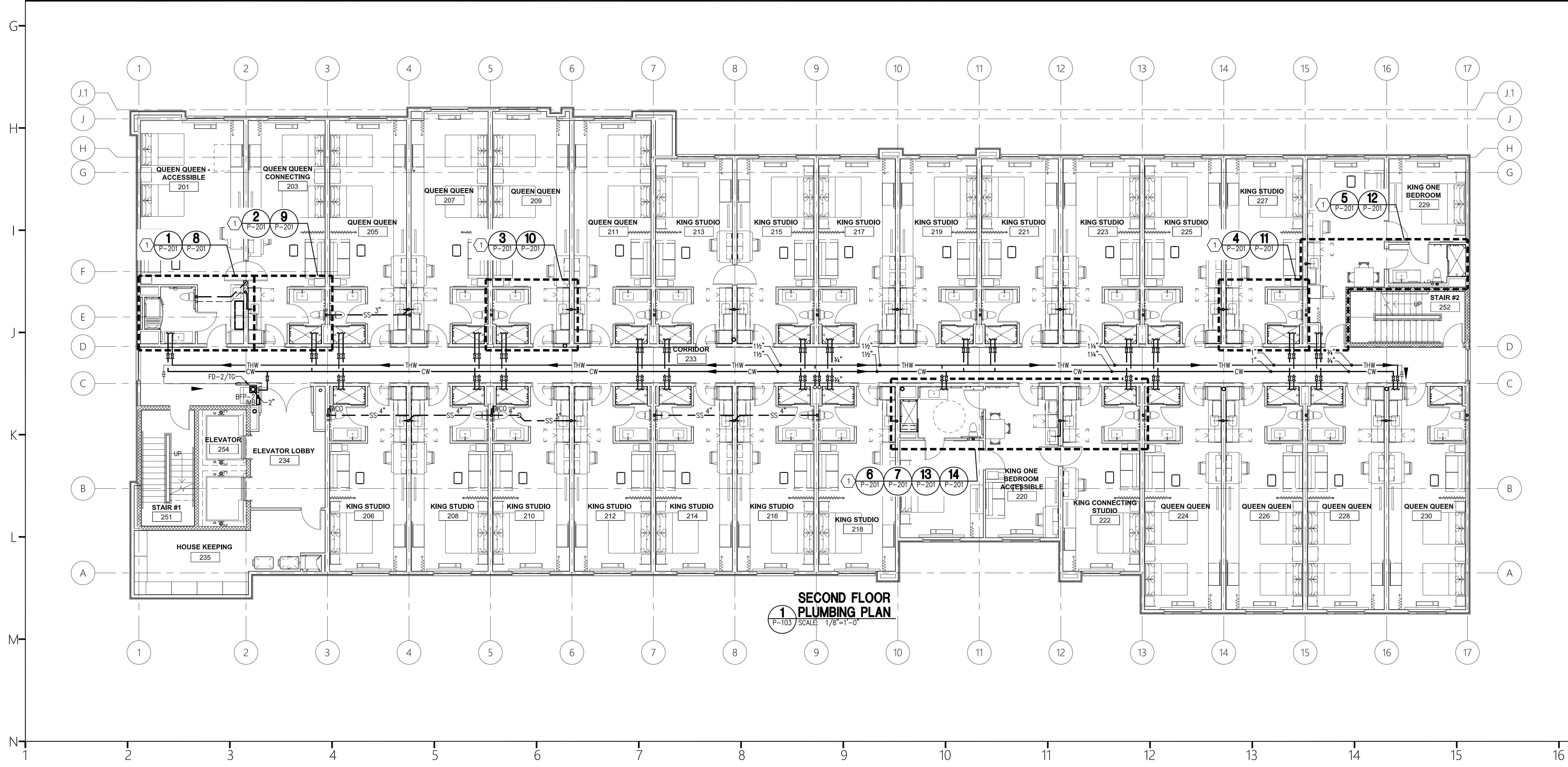
**FIRST FLOOR
PLUMBING SUPPLY PLAN**
1 P-102 SCALE: 1/8"=1'-0"

PLUMBING LEGEND	
— CW —	COLD WATER
— CW —	COLD WATER BURIED
— HW —	140°F HOT WATER
— 165HW —	165°F HOT WATER
— THW —	125°F TEMPERED HOT WATER
— HWR —	HOT WATER RETURN
— THWR —	TEMPERED HOT WATER RETURN
— SS —	SANITARY SEWER
— SS —	SANITARY SEWER BURIED OR BELOW FLOOR
— GW —	GREASE INTERCEPTOR WASTE
— NG —	NATURAL GAS
— PRDC —	PRIMARY ROOF DRAIN CONDUCTOR
— SRDC —	SECONDARY ROOF DRAIN CONDUCTOR
— C —	CONDENSATE DRAINAGE
— PD —	PUMPED DRAIN

THIS DRAWING IS THE PROPERTY OF COR3 DESIGN, LLC AND IS COPY RIGHT PROTECTED. IT IS NOT TO BE REPRODUCED OR COPIED IN WHOLE OR IN PART. IT IS ONLY TO BE USED FOR THE PROJECT AND SITE SPECIFICALLY IDENTIFIED HEREIN AND IS NOT TO BE USED FOR ANY OTHER PROJECT. IT IS TO BE RETURNED UPON REQUEST.



**THIRD FLOOR
PLUMBING PLAN**
P-103 SCALE: 1/8"=1'-0"



**SECOND FLOOR
PLUMBING PLAN**
P-103 SCALE: 1/8"=1'-0"

- KEY NOTES:**
1. TYPICAL FOR ALL SIMILAR FIXTURE LAYOUTS FOR ALL FLOORS.
 2. 3"SS FROM ICE MAKER HUB DRAINS ABOVE.

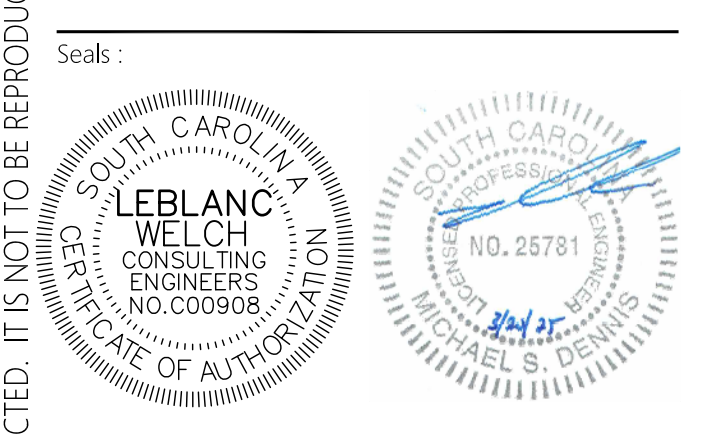
PLUMBING LEGEND	
— CW —	COLD WATER
— CW —	COLD WATER BURIED
— HW —	140°F HOT WATER
— 165HW —	165°F HOT WATER
— THW —	125°F TEMPERED HOT WATER
— HWR —	HOT WATER RETURN
— THWR —	TEMPERED HOT WATER RETURN
— SS —	SANITARY SEWER
— SS —	SANITARY SEWER BURIED OR BELOW FLOOR
— GW —	GREASE INTERCEPTOR WASTE
— SSV —	SANITARY SEWER VENT
— NG —	NATURAL GAS
— PRDC —	PRIMARY ROOF DRAIN CONDUCTOR
— SRDC —	SECONDARY ROOF DRAIN CONDUCTOR
— C —	CONDENSATE DRAINAGE
— PD —	PUMPED DRAIN



COR3 Design, LLC
Commercial, Office, Retail, Restaurant, Real Estate Development
125 Rhett Street
Suite 101
Greenville, SC 29601
Phone: 864.451.5288
Fax: 864.990.3085
www.cor3design.com

Consultants:
STRUCTURAL
Taylor and Viola Structural Engineers
PO Box 2616
Hickory, NC 28603
828.328.6331
PLUMBING
LWI Consulting Engineers
870 Cleveland St, STE 1D
Greenville, SC 29601
864.271.6535
MECHANICAL
LWI Consulting Engineers
870 Cleveland St, STE 1D
Greenville, SC 29601
864.271.6535
ELECTRICAL
Matrix Engineering, INC
912 S Pine Street
Spartanburg, SC 29302
864.583.6274

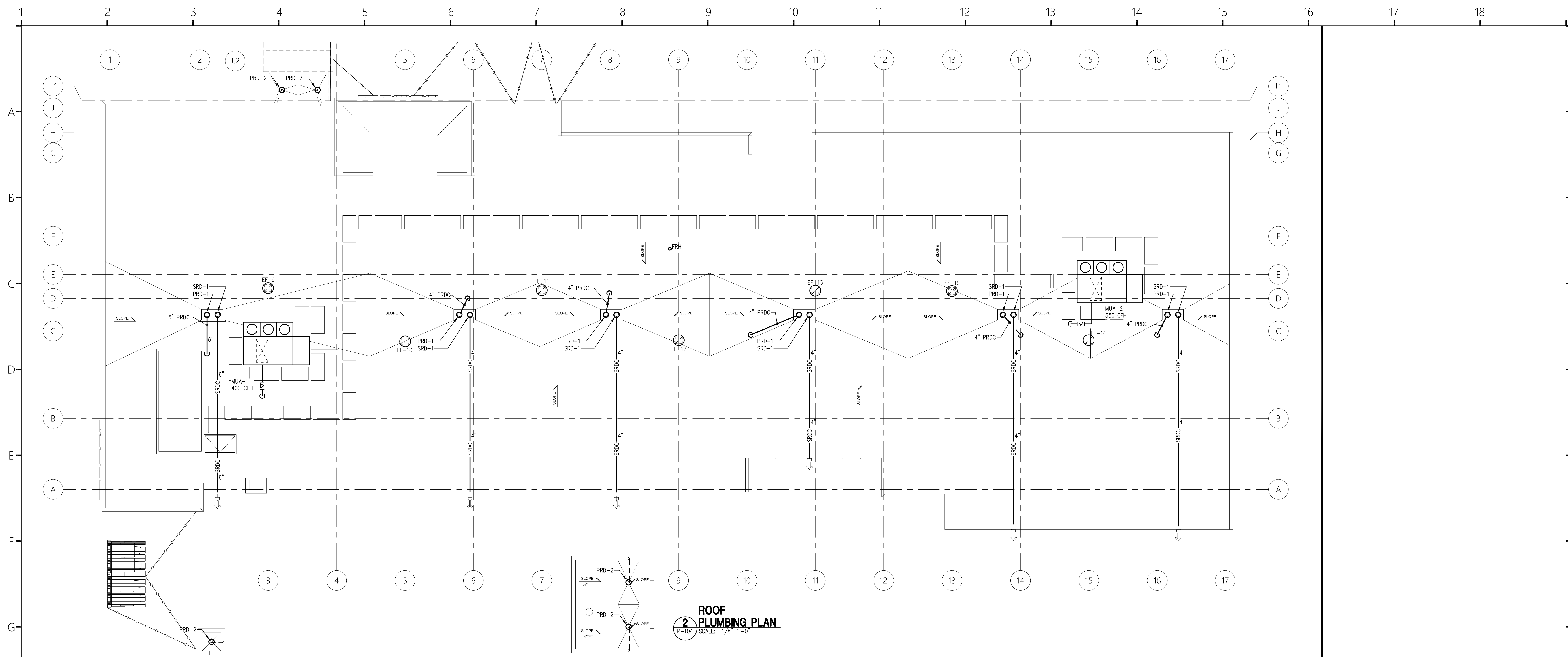
Project Title:
**HOME 2 SUITES
GREENWOOD SC**
475 HOSPITALITY BLVD,
GREENWOOD, SC 29649



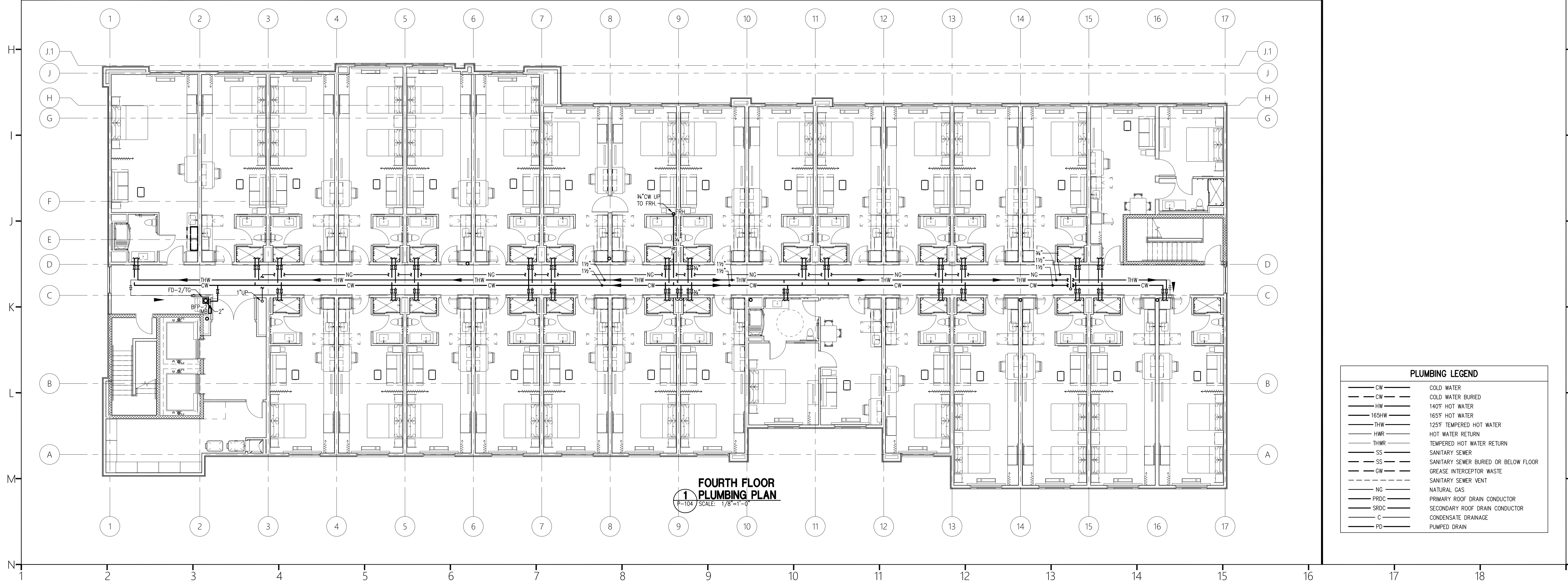
Revisions:
10.16.2024 Issue For Permit
A 03.20.2025 100% Issue For Hilton

Project Number:
23112
Phase:
CD
Date:
04.22.2024
Drawn By:
NSC
Checked By:
LWI
Sheet Number:
P-103
Sheet Title:
SECOND & THIRD FLOOR
PLUMBING PLANS

THIS DRAWING IS THE PROPERTY OF COR3 DESIGN, LLC AND IS COPY RIGHT PROTECTED. IT IS NOT TO BE REPRODUCED OR COPIED IN WHOLE OR IN PART. IT IS ONLY TO BE USED FOR THE PROJECT AND SITE SPECIFICALLY IDENTIFIED HEREIN AND IS NOT TO BE USED FOR ANY OTHER PROJECT. IT IS TO BE RETURNED UPON REQUEST.



2 ROOF PLUMBING PLAN
 P-104 SCALE: 1/8"=1'-0"



1 FOURTH FLOOR PLUMBING PLAN
 P-104 SCALE: 1/8"=1'-0"

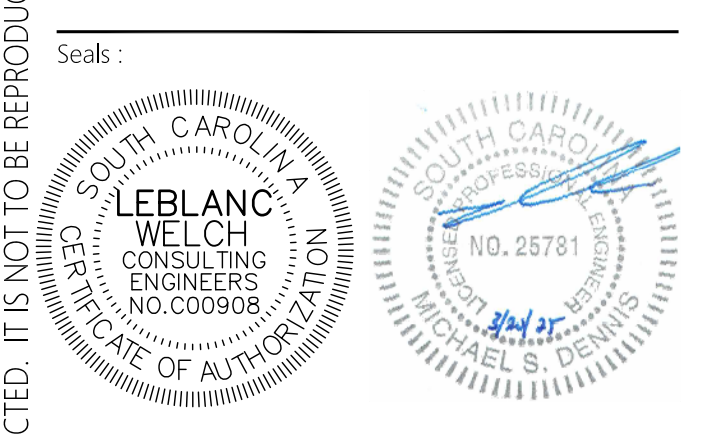
PLUMBING LEGEND	
— CW —	COLD WATER
— CW —	COLD WATER BURIED
— HW —	140°F HOT WATER
— 165HW —	165°F HOT WATER
— THW —	125°F TEMPERED HOT WATER
— HWR —	HOT WATER RETURN
— THWR —	TEMPERED HOT WATER RETURN
— SS —	SANITARY SEWER
— SS —	SANITARY SEWER BURIED OR BELOW FLOOR
— GW —	GREASE INTERCEPTOR WASTE
— PD —	PUMPED DRAIN
— NG —	NATURAL GAS
— PRDC —	PRIMARY ROOF DRAIN CONDUCTOR
— SRDC —	SECONDARY ROOF DRAIN CONDUCTOR
— C —	CONDENSATE DRAINAGE
— PD —	PUMPED DRAIN



COR3 Design, LLC
 Commercial, Office, Retail, Restaurant, Real Estate Development
 125 Rhett Street
 Suite 101
 Greenville, SC 29601
 Phone: 864.451.5288
 Fax: 864.990.3085
 www.cor3design.com

Consultants:
STRUCTURAL
 Taylor and Viola Structural Engineers
 PO Box 2616
 Hickory, NC 28603
 828.328.6331
PLUMBING
 LWI Consulting Engineers
 870 Cleveland St, STE 1D
 Greenville, SC 29601
 864.271.6535
MECHANICAL
 LWI Consulting Engineers
 870 Cleveland St, STE 1D
 Greenville, SC 29601
 864.271.6535
ELECTRICAL
 Matrix Engineering, INC
 912 S Pine Street
 Spartanburg, SC 29302
 864.583.6274

Project Title:
HOME 2 SUITES
 GREENWOOD SC
 475 HOSPITALITY BLVD,
 GREENWOOD, SC 29649



Revisions:
 10.16.2024 Issue For Permit
 A 03.20.2025 100% Issue For Hilton

Project Number:
 23112
 Phase:
 CD
 Date:
 04.22.2024
 Drawn By:
 NSC
 Checked By:
 LWI
 Sheet Number:
P-104
 Sheet Title:
FOURTH FLOOR & ROOF PLUMBING PLANS

THIS DRAWING IS THE PROPERTY OF COR3 DESIGN, LLC AND IS COPY RIGHT PROTECTED. IT IS NOT TO BE REPRODUCED OR COPIED IN WHOLE OR IN PART. IT IS ONLY TO BE USED FOR THE PROJECT AND SITE SPECIFICALLY IDENTIFIED HEREIN AND IS NOT TO BE USED FOR ANY OTHER PROJECT. IT IS TO BE RETURNED UPON REQUEST.



COR3 Design, LLC
Commercial, Office, Retail, Restaurant, Real Estate Development

125 Rhett Street
Suite 101
Greenville, SC 29601
Phone: 864.451.5288
Fax: 864.990.3085
www.cor3design.com

CONSULTANTS:
STRUCTURAL
Taylor and Viola Structural Engineers
PO Box 2616
Hickory, NC 28603
828.328.6331
PLUMBING
LWI Consulting Engineers
870 Cleveland St, STE 1D
Greenville, SC 29601
864.271.6535
MECHANICAL
LWI Consulting Engineers
870 Cleveland St, STE 1D
Greenville, SC 29601
864.271.6535
ELECTRICAL
Matrix Engineering, INC
912 S Pine Street
Spartanburg, SC 29302
864.583.6274

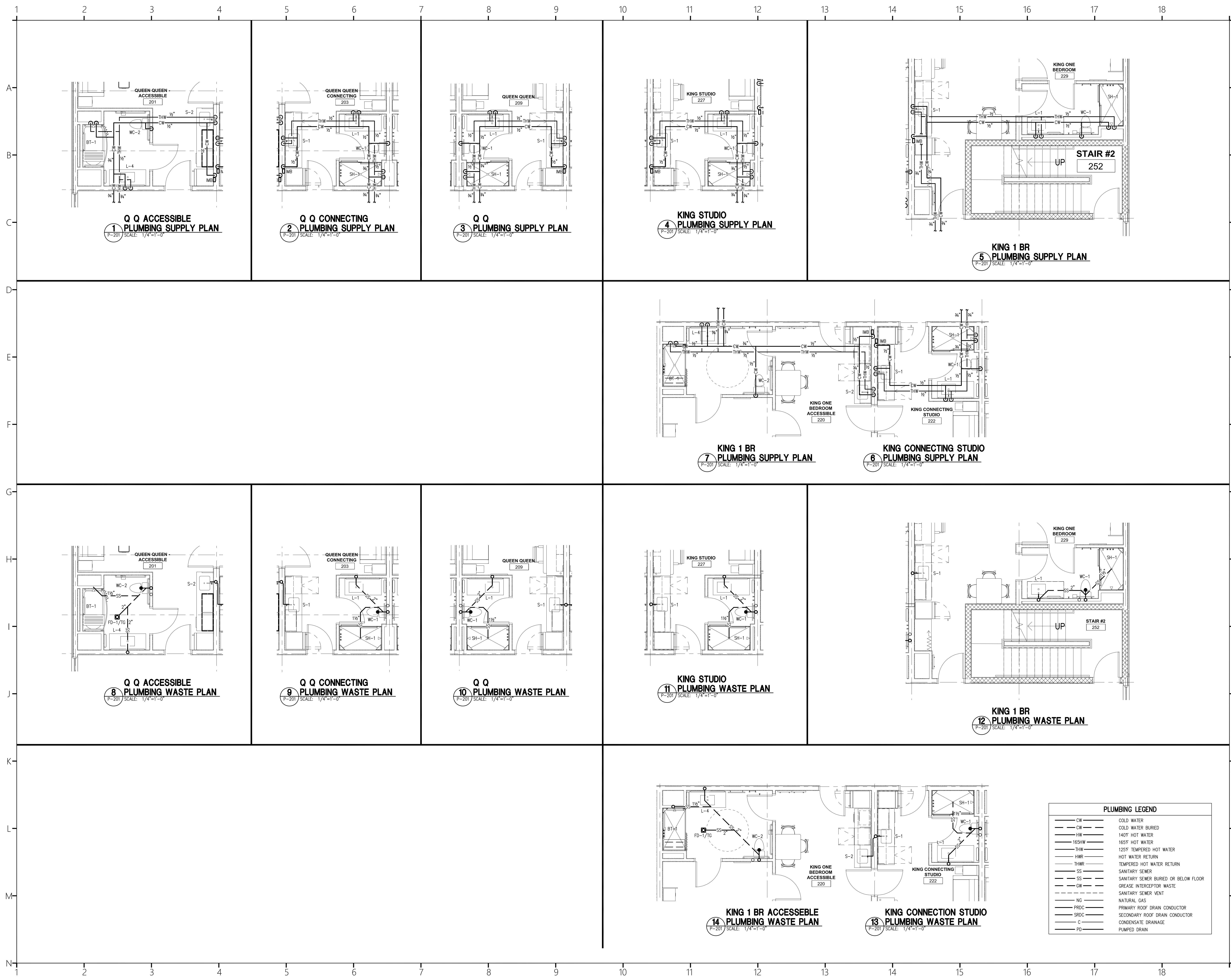
Project Title:
**HOME 2 SUITES
GREENWOOD SC**
475 HOSPITALITY BLVD,
GREENWOOD, SC 29649



Revisions:
10.16.2024 Issue For Permit
A 03.20.2025 100% Issue For Hilton

Project Number:
23112
Phase:
CD
Date:
04.22.2024
Drawn By:
NSC
Checked By:
LWI

Sheet Number:
P-201
Sheet Title:
**PLUMBING GUEST ROOM
PLANS**



PLUMBING LEGEND	
— CW —	COLD WATER
— CW —	COLD WATER BURIED
— HW —	140°F HOT WATER
— 165HW —	165°F HOT WATER
— THW —	125°F TEMPERED HOT WATER
— HWR —	HOT WATER RETURN
— THWR —	TEMPERED HOT WATER RETURN
— SS —	SANITARY SEWER
— SS —	SANITARY SEWER BURIED OR BELOW FLOOR
— GW —	GREASE INTERCEPTOR WASTE
— — —	SANITARY SEWER VENT
— NG —	NATURAL GAS
— PRDC —	PRIMARY ROOF DRAIN CONDUCTOR
— SRDC —	SECONDARY ROOF DRAIN CONDUCTOR
— C —	CONDENSATE DRAINAGE
— PD —	PUMPED DRAIN



COR3 Design, LLC

Commercial, Office, Retail, Restaurant, Real Estate Development

125 Rhett Street
Suite 101
Greenville, SC 29601

Phone: 864.451.5288
Fax: 864.990.3085

www.cor3design.com

Consultants:
STRUCTURAL
Taylor and Viola Structural Engineers
PO Box 2616
Hickory, NC 28603
828.328.6331

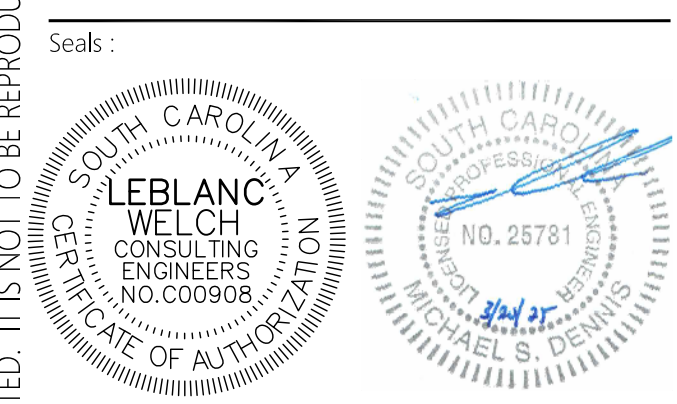
PLUMBING
LWI Consulting Engineers
870 Cleveland St, STE 10
Greenville, SC 29601
864.271.6535

MECHANICAL
LWI Consulting Engineers
870 Cleveland St, STE 10
Greenville, SC 29601
864.271.6535

ELECTRICAL
Matrix Engineering, INC
912 S Pine Street
Spartanburg, SC 29302
864.583.6274

Project Title:
**HOME 2 SUITES
GREENWOOD SC**
475 HOSPITALITY BLVD,
GREENWOOD, SC 29649

Client Logo:

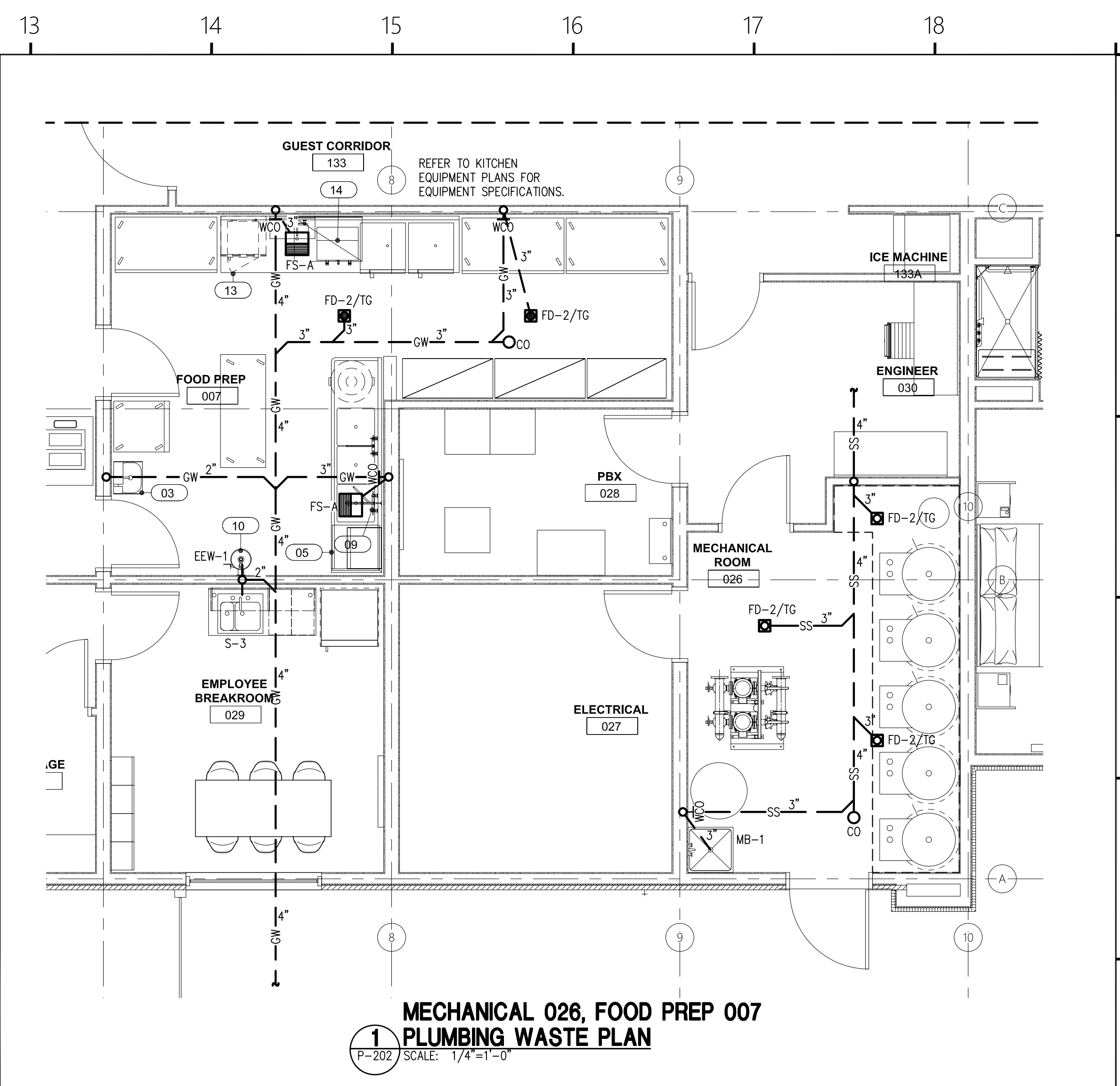


Revisions:
10.16.2024 Issue For Permit
A 03.20.2025 100% Issue For Hilton

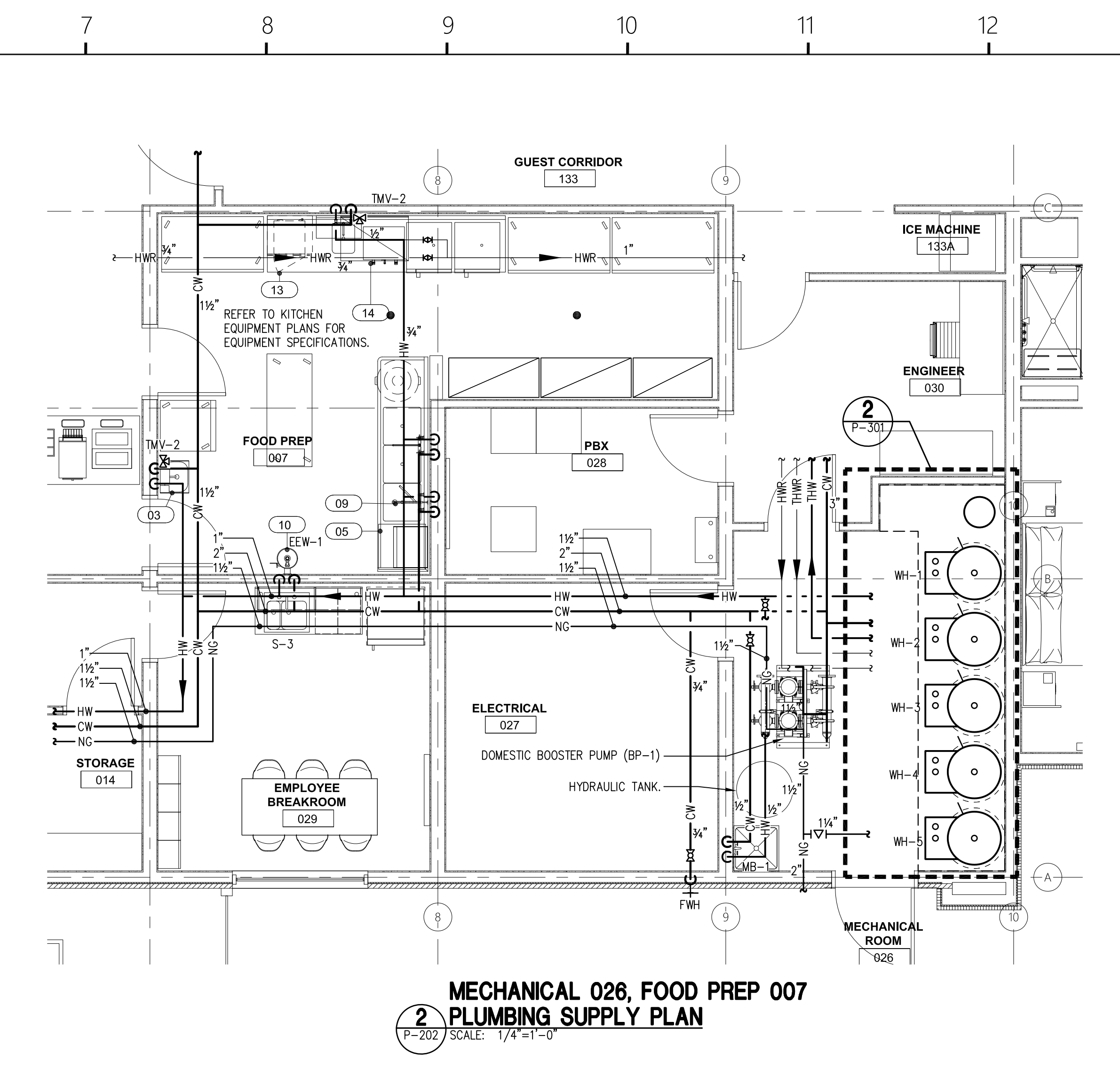
Project Number:
23112
Phase:
CD
Date:
04.22.2024
Drawn By:
NSC
Checked By:
LWI

Sheet Number:
P-202
Sheet Title:
FIRST FLOOR ENLARGED
PLUMBING PLANS

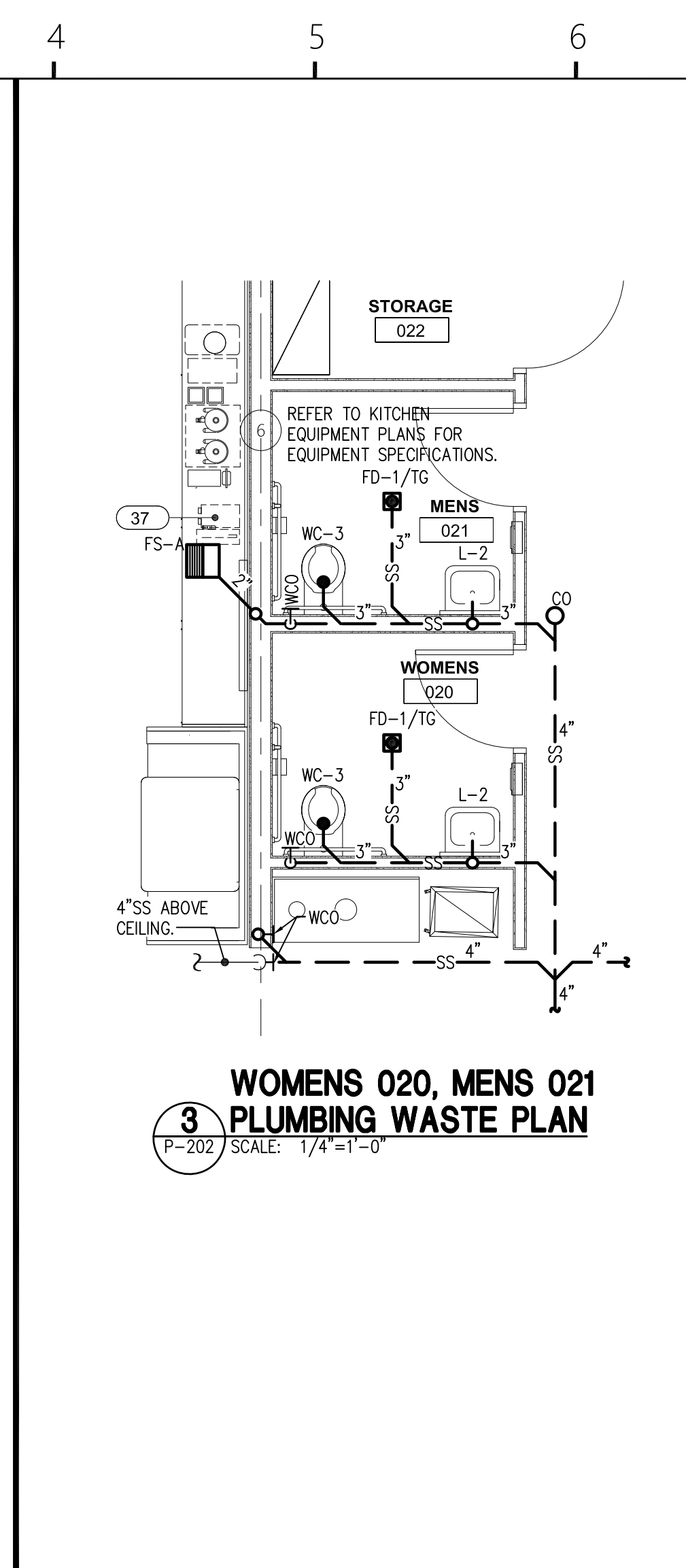
THIS DRAWING IS THE PROPERTY OF COR3 DESIGN, LLC AND IS COPY RIGHT PROTECTED. IT IS NOT TO BE REPRODUCED OR COPIED IN WHOLE OR IN PART. IT IS ONLY TO BE USED FOR THE PROJECT AND SITE SPECIFICALLY IDENTIFIED HEREIN AND IS NOT TO BE USED FOR ANY OTHER PROJECT. IT IS TO BE RETURNED UPON REQUEST.



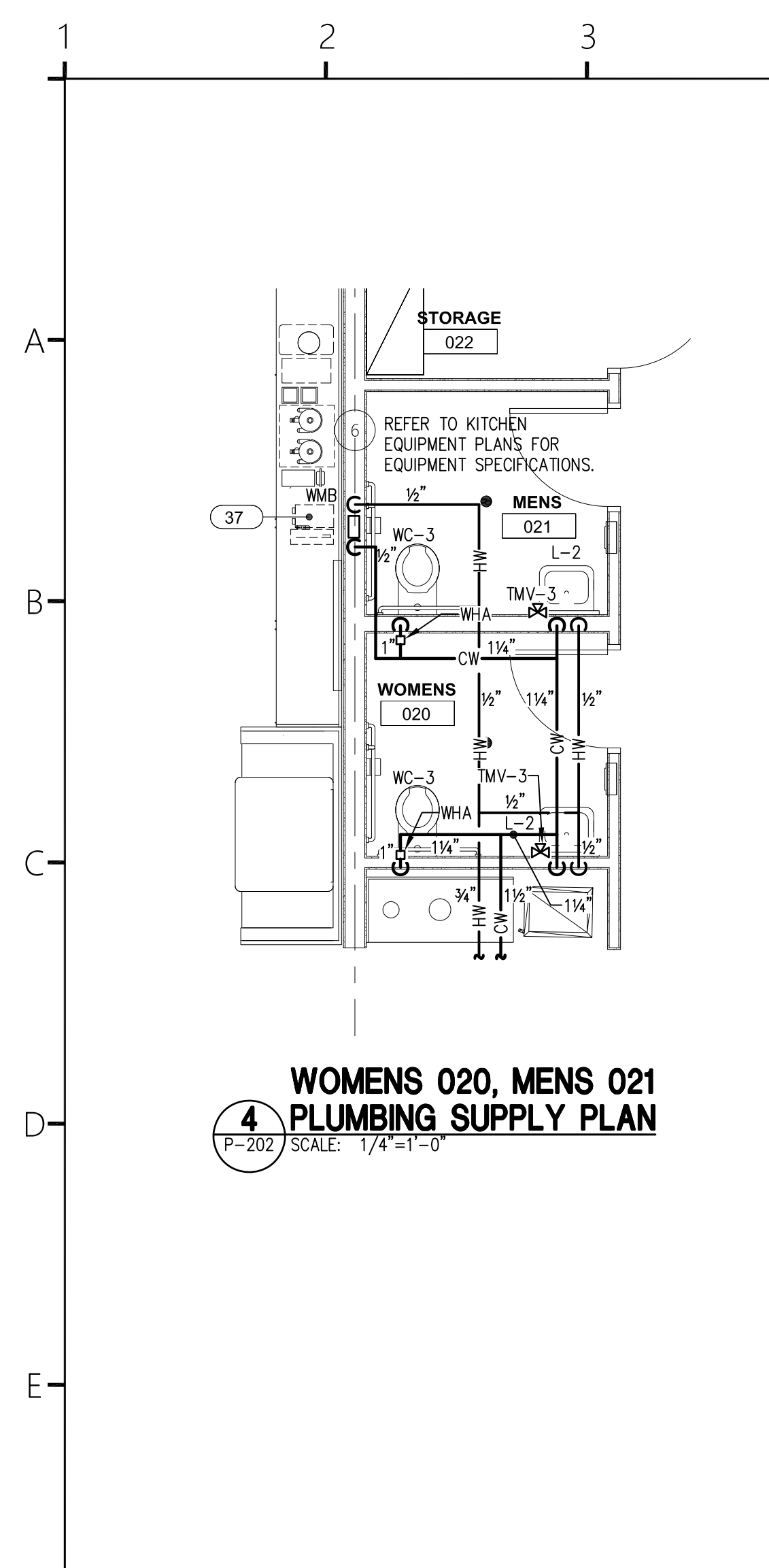
**MECHANICAL 026, FOOD PREP 007
1 PLUMBING WASTE PLAN**
P-202 SCALE: 1/4"=1'-0"



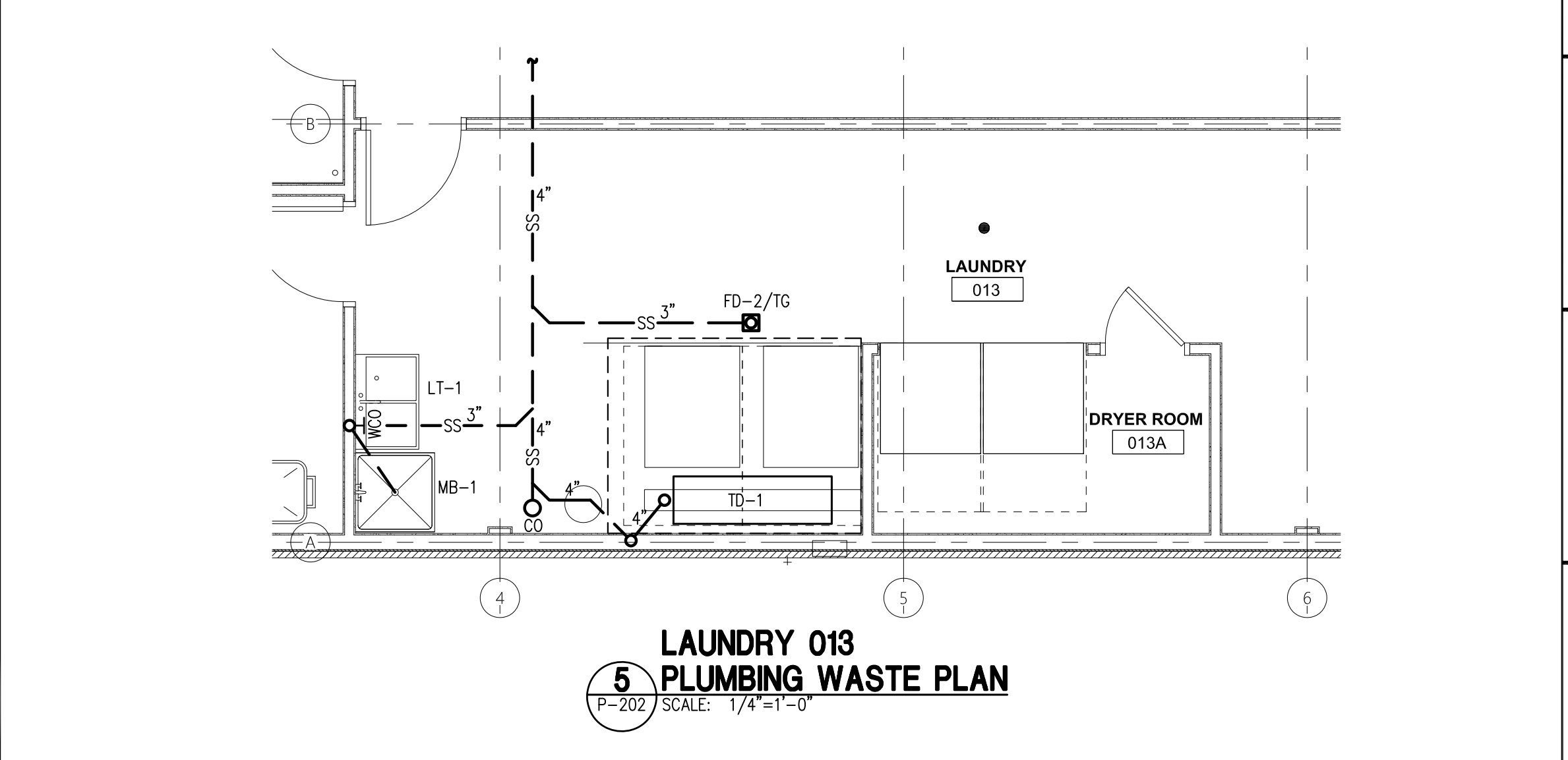
**MECHANICAL 026, FOOD PREP 007
2 PLUMBING SUPPLY PLAN**
P-202 SCALE: 1/4"=1'-0"



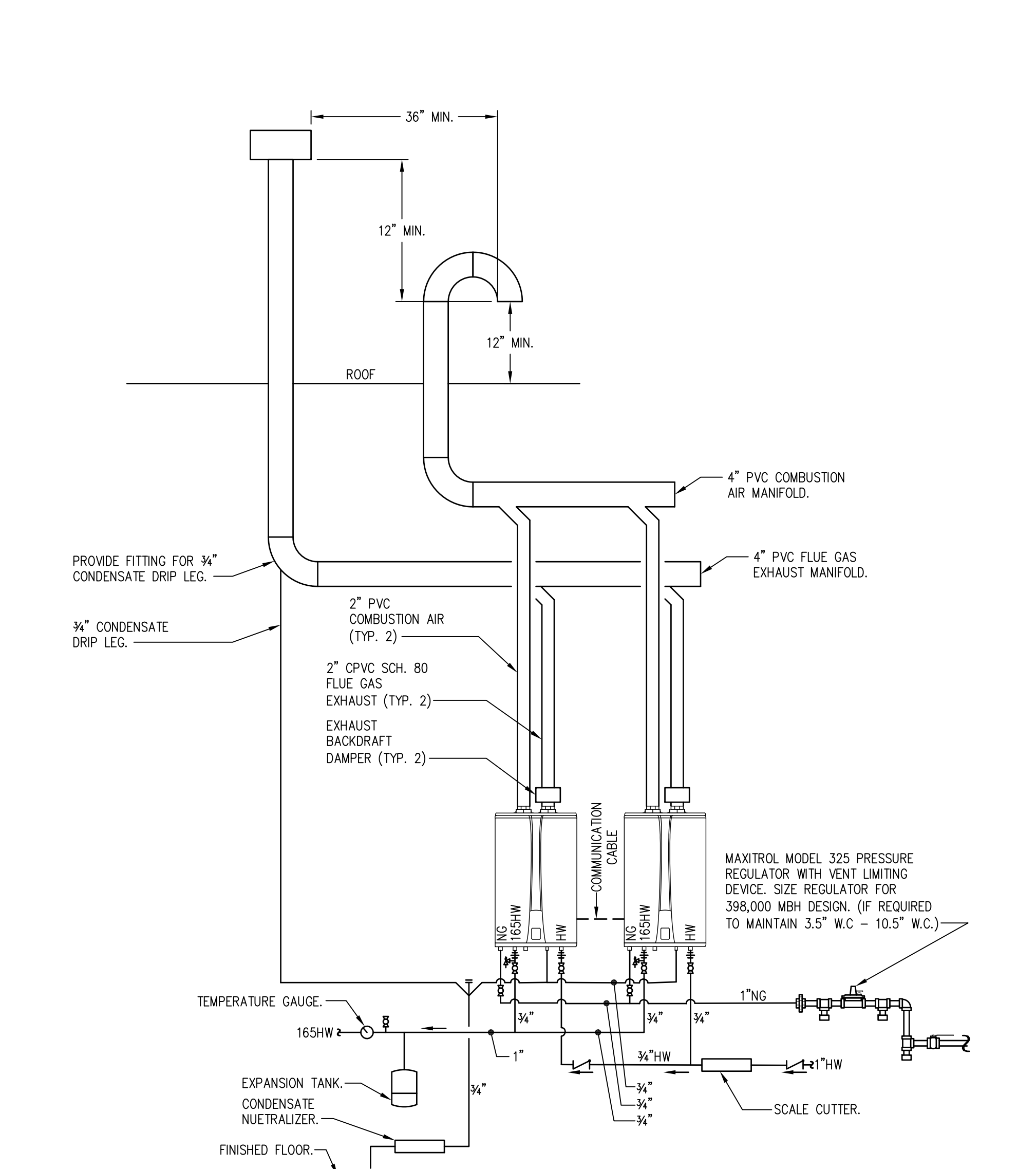
**WOMENS 020, MENS 021
3 PLUMBING WASTE PLAN**
P-202 SCALE: 1/4"=1'-0"



**WOMENS 020, MENS 021
4 PLUMBING SUPPLY PLAN**
P-202 SCALE: 1/4"=1'-0"

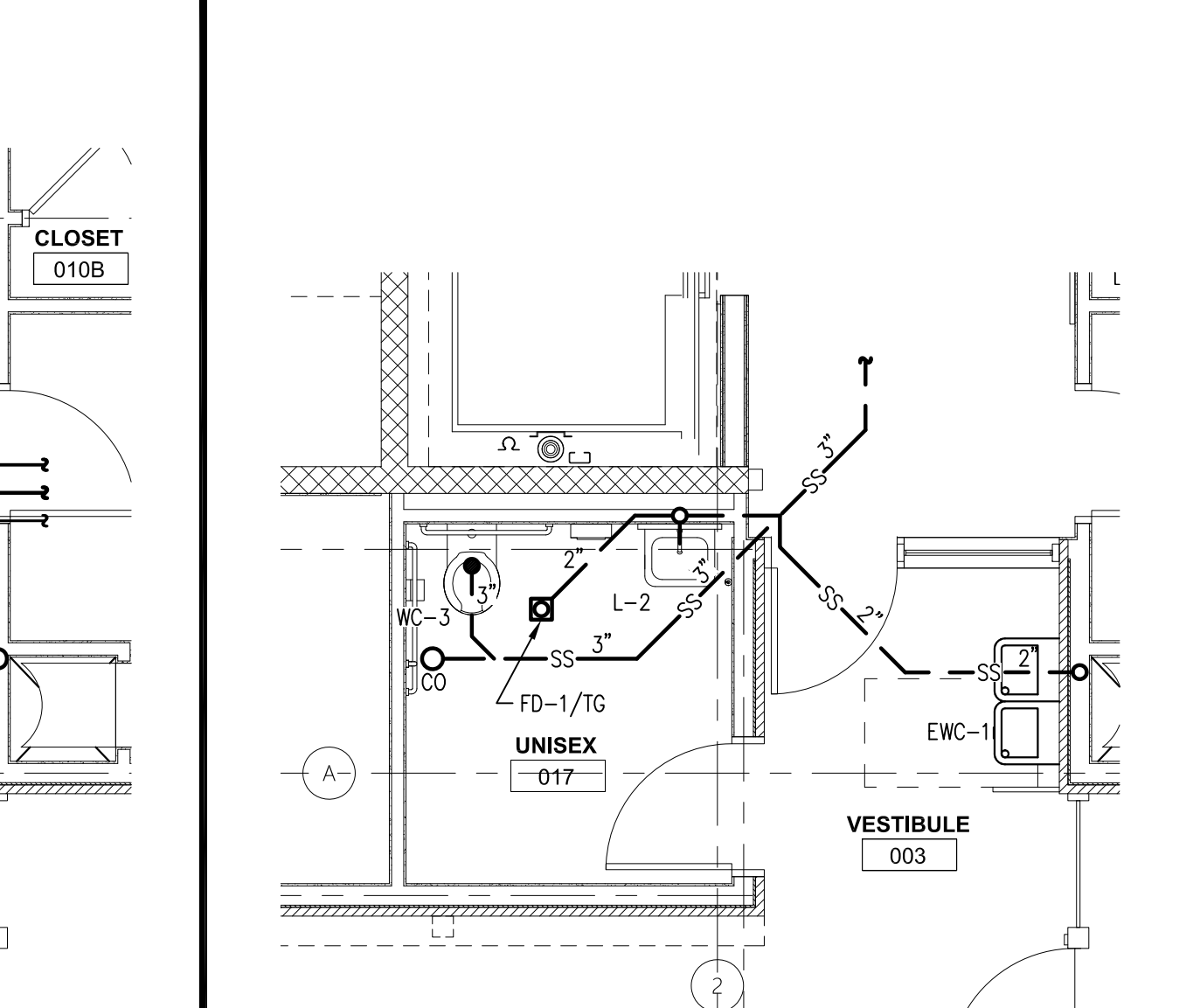


**LAUNDRY 013
5 PLUMBING WASTE PLAN**
P-202 SCALE: 1/4"=1'-0"

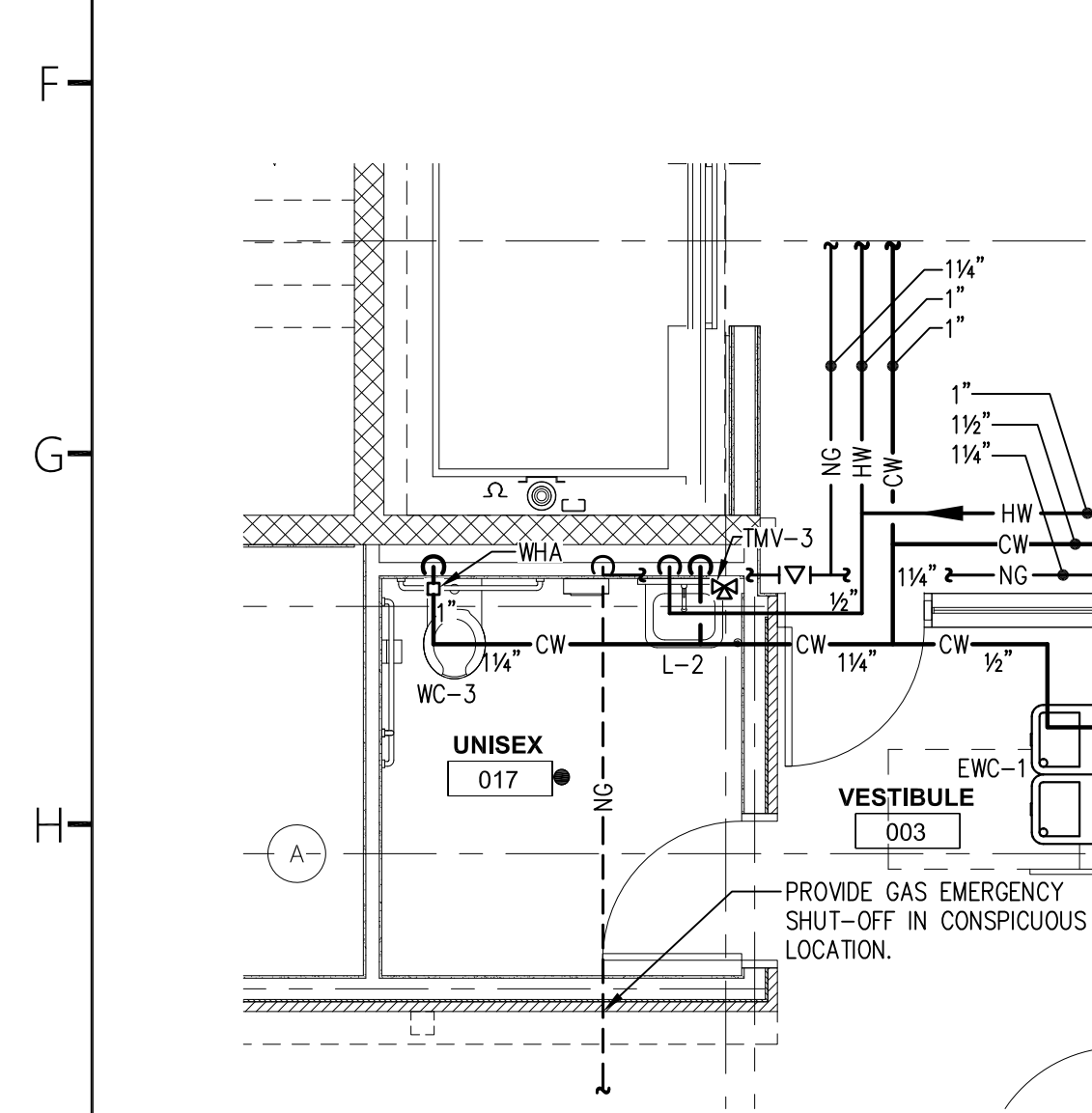


**WH-6, WH-7
11 GAS FIRED TANKLESS WATER HEATER SCHEMATIC**
P-202 SCALE: NONE

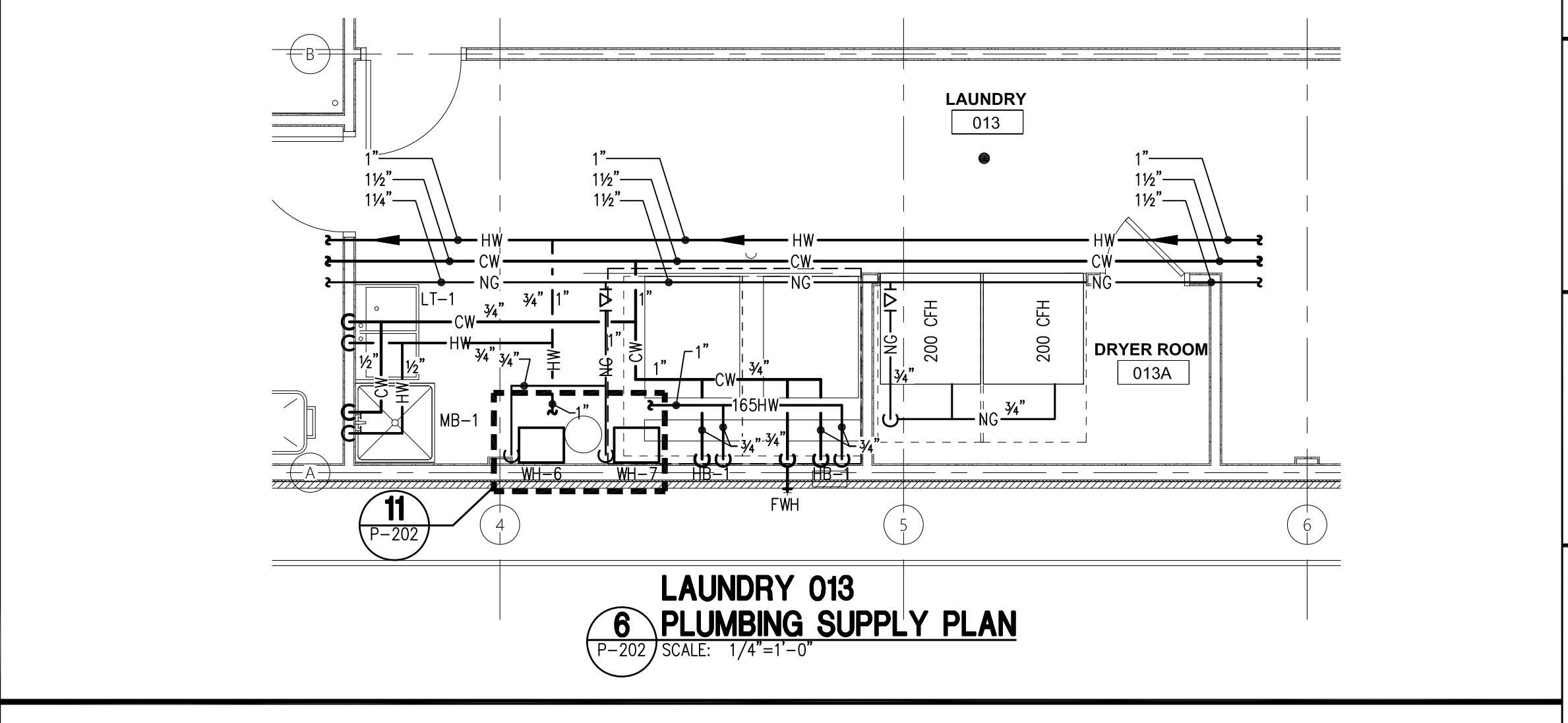
NOTES:
1. PLUMBING CONTRACTOR IS RESPONSIBLE TO REFER TO MANUFACTURER'S INSTALLATION AND START UP INSTRUCTIONS FOR SPECIFIC REQUIREMENTS FOR TANKLESS WATER HEATERS, VENTING, AND CONTROL SET-UP.
2. TWO CONCENTRIC VENT CONFIGURATIONS, OR SIDEWALL TERMINATIONS ARE ACCEPTABLE IN LIEU OF THE INDICATED COMMON VENT CONFIGURATION THROUGH THE ROOF. TERMINATION CLEARANCE REQUIREMENTS MUST BE MAINTAINED PER MANUFACTURER'S INSTALLATION INSTRUCTIONS.



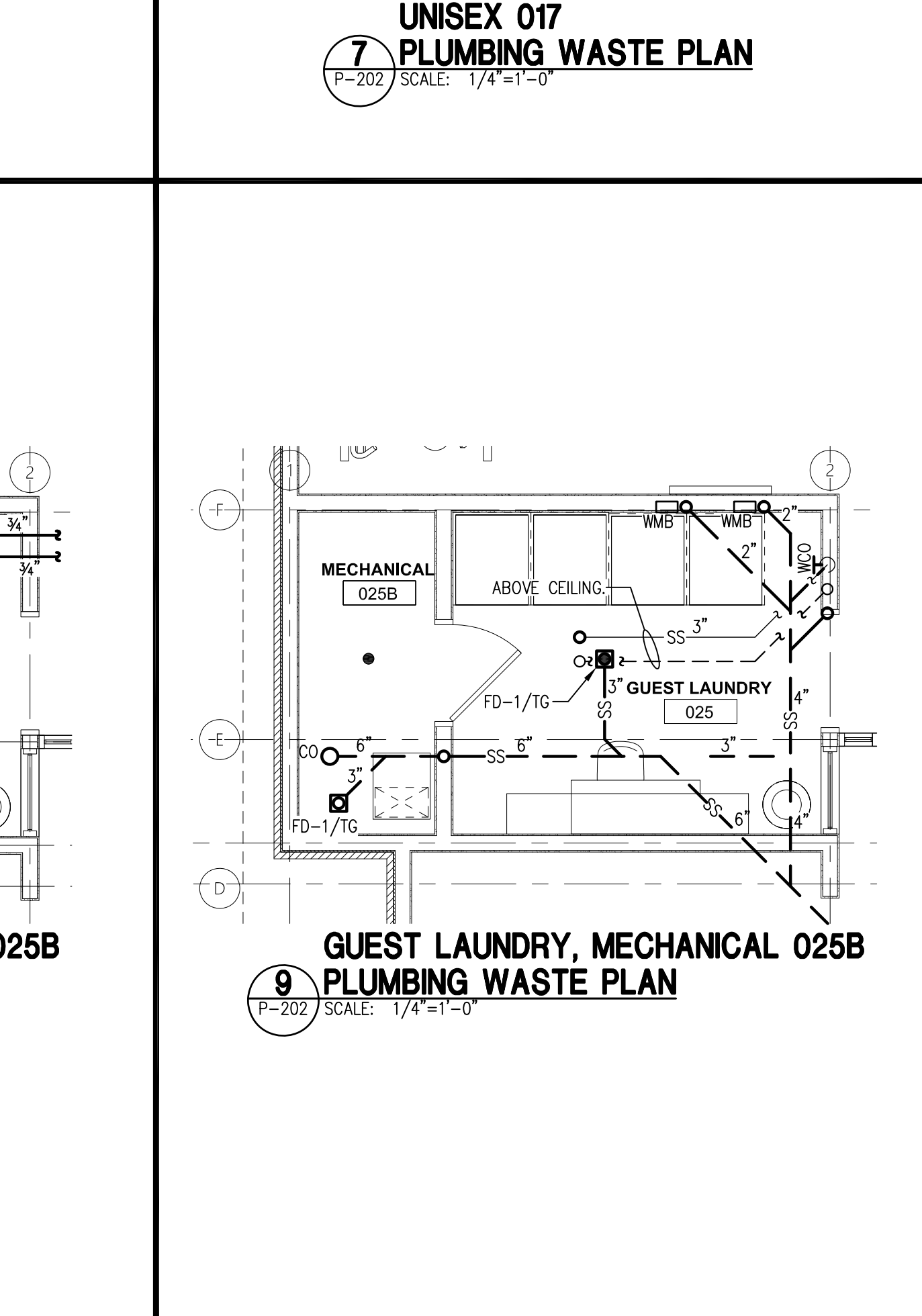
**UNISEX 017
7 PLUMBING WASTE PLAN**
P-202 SCALE: 1/4"=1'-0"



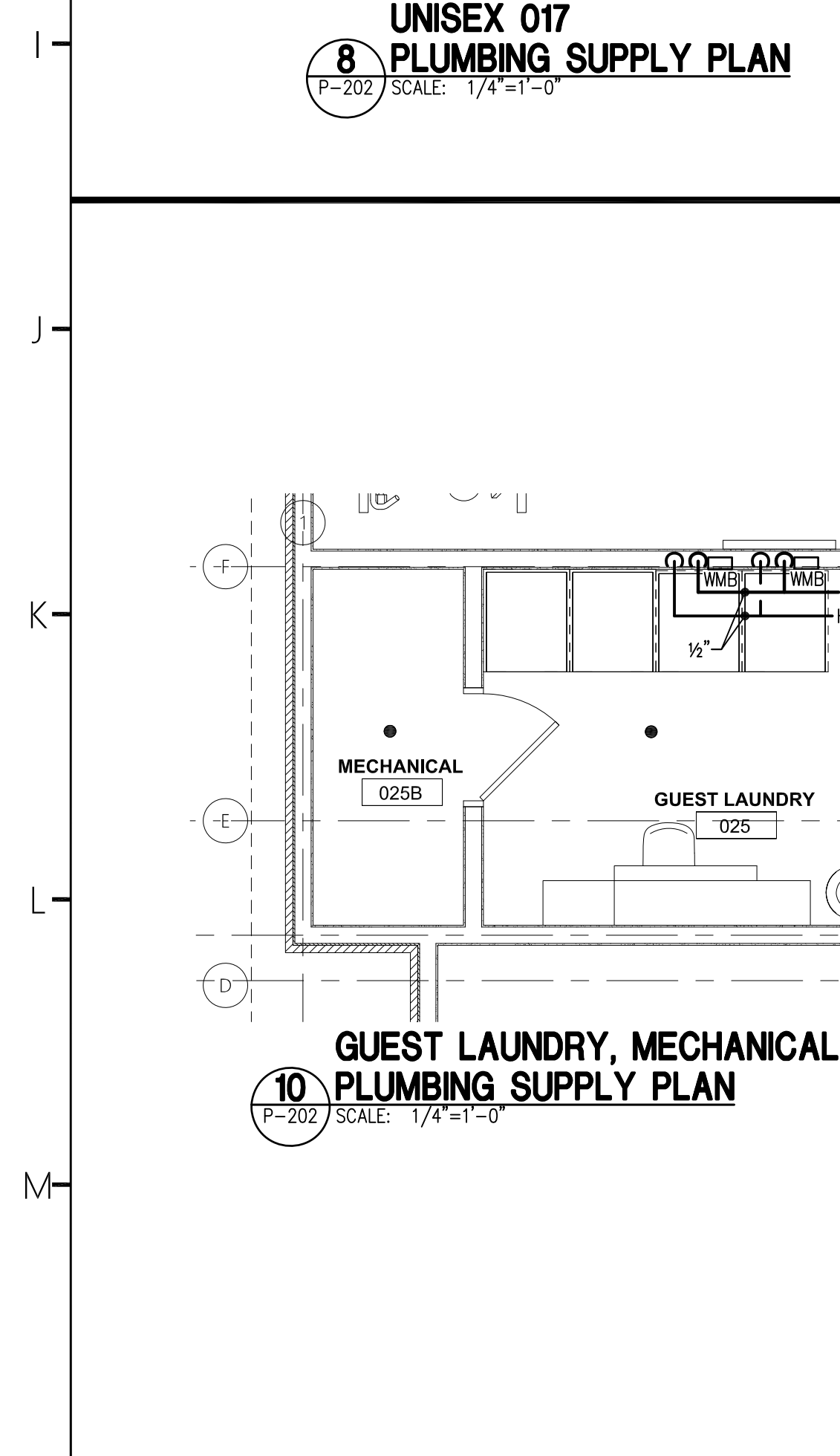
**UNISEX 017
8 PLUMBING SUPPLY PLAN**
P-202 SCALE: 1/4"=1'-0"



**LAUNDRY 013
6 PLUMBING SUPPLY PLAN**
P-202 SCALE: 1/4"=1'-0"



**GUEST LAUNDRY, MECHANICAL 025B
9 PLUMBING WASTE PLAN**
P-202 SCALE: 1/4"=1'-0"



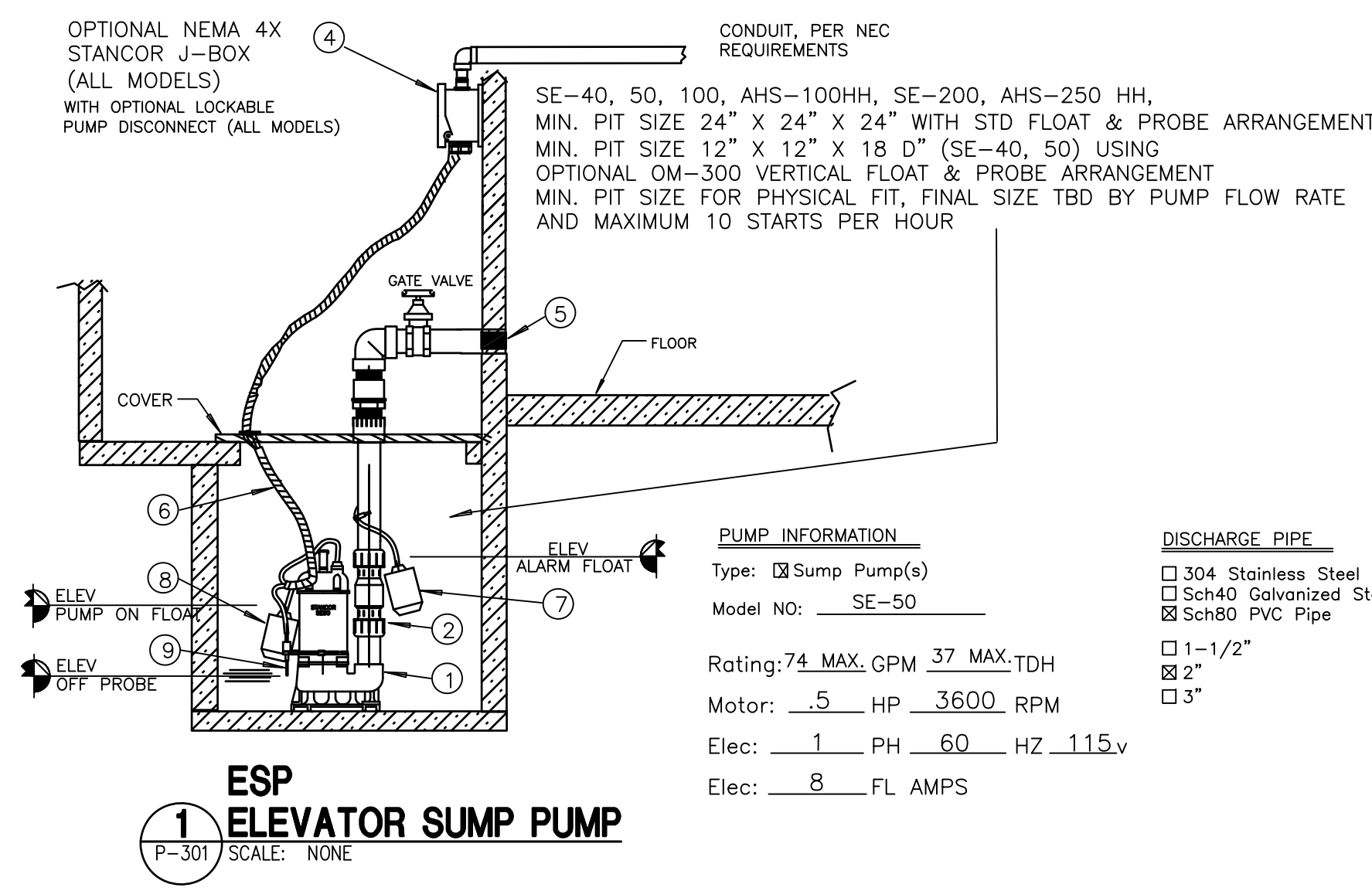
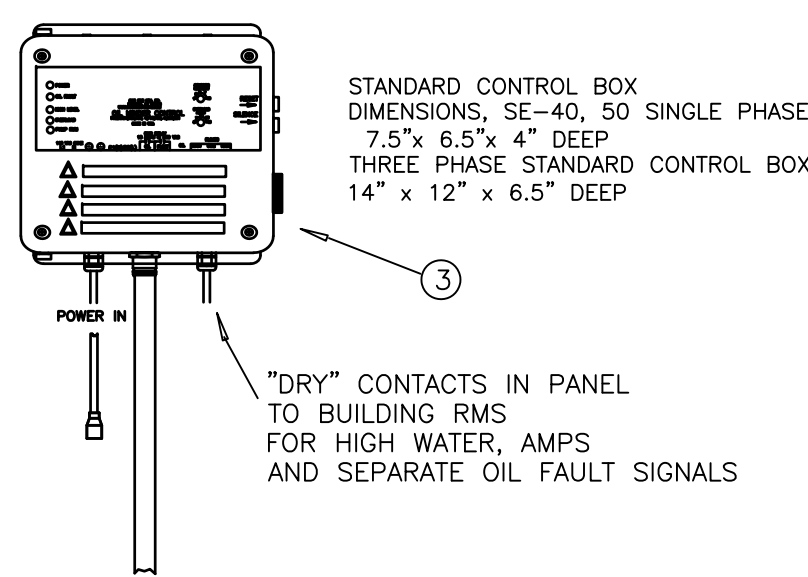
**GUEST LAUNDRY, MECHANICAL 025B
10 PLUMBING SUPPLY PLAN**
P-202 SCALE: 1/4"=1'-0"

PLUMBING LEGEND	
— CW —	COLD WATER
— CW —	COLD WATER BURIED
— HW —	140°F HOT WATER
— 165HW —	165°F HOT WATER
— THW —	125°F TEMPERED HOT WATER
— HWR —	HOT WATER RETURN
— THWR —	TEMPERED HOT WATER RETURN
— SS —	SANITARY SEWER
— SS —	SANITARY SEWER BURIED OR BELOW FLOOR
— GW —	GREASE INTERCEPTOR WASTE
— NG —	NATURAL GAS
— PRDC —	PRIMARY ROOF DRAIN CONDUCTOR
— SRDC —	SECONDARY ROOF DRAIN CONDUCTOR
— C —	CONDENSATE DRAINAGE
— PD —	PUMPED DRAIN

SP-1	STANCOR	SE-50 0/M ELV	ELEVATOR PIT SUMP PUMP: HEAVY DUTY SUBMERSIBLE EFFLUENT PUMP, 0.5 HP, 115V/1PH, 50 GPM @ 20' TDH. SOLID STATE OIL MINDER CONTROL SYSTEM IN GASKETED NEMA 4X ENCLOSURE. 16' DIRECT WIRE CABLES FOR FLOATS, OIL MINDER PROBE AND POWER.
------	---------	---------------	---

- STANCOR MODEL SE-50 0/M ELV SUBMERSIBLE EFFLUENT PUMP 0.5 HP, 115 VOLT, 3600 RPM, 2" DISCHARGE CONNECTION (SHOWN AS EXAMPLE)
 - CHECK VALVE (2")
 - STANCOR OIL-MINDER 115V, 1Ø CONTROL SYSTEM WITH BUILT-IN AUDIBLE AND VISUAL ALARM WHEN PUMP DOES NOT RUN DUE TO OIL IN PIT OR HIGH LIQUID OR HIGH AMPERAGE CONDITION. PROVIDE SILENCING BUTTON FOR AUDIBLE ALARM BUILT INTO PANEL. PANEL SHALL HAVE TWO CONTACTS FOR A REMOTE ALARM LOCATION (ONE EACH FOR OIL AND HIGH WATER OR AMPERAGE ALERT).
 - JUNCTION BOX AVAILABLE AS A FACTORY OPTION WITH OR WITHOUT A LOCKABLE PUMP DISCONNECT SWITCH
 - ALL BURIED PUMP PRESSURE DISCHARGE PIPING SHALL BE PROTECTED WITH TAPECOAT CT CORROSION PROTECTION TAPE
 - PUMP CABLE, PROBE CABLE, HIGH LIQUID ALARM CABLE, AND PUMP "ON" FLOAT CABLE (16 FT. LENGTHS STANDARD)
 - HIGH LIQUID ALARM FLOAT WITH CLAMP DEVICE TO MOUNT TO PUMP DISCHARGE PIPING
 - PUMP ON FLOAT
 - OIL SENSING PROBE
- ITEMS 1, 3, 6, 7, 8 AND 9 PROVIDED BY STANCOR AS A STANDARD PACKAGE

STANCOR "JR" AND DIRECT WIRE ELEVATOR OIL-MINDER SYSTEMS



ESP ELEVATOR SUMP PUMP
P-301 SCALE: NONE

PUMP INFORMATION

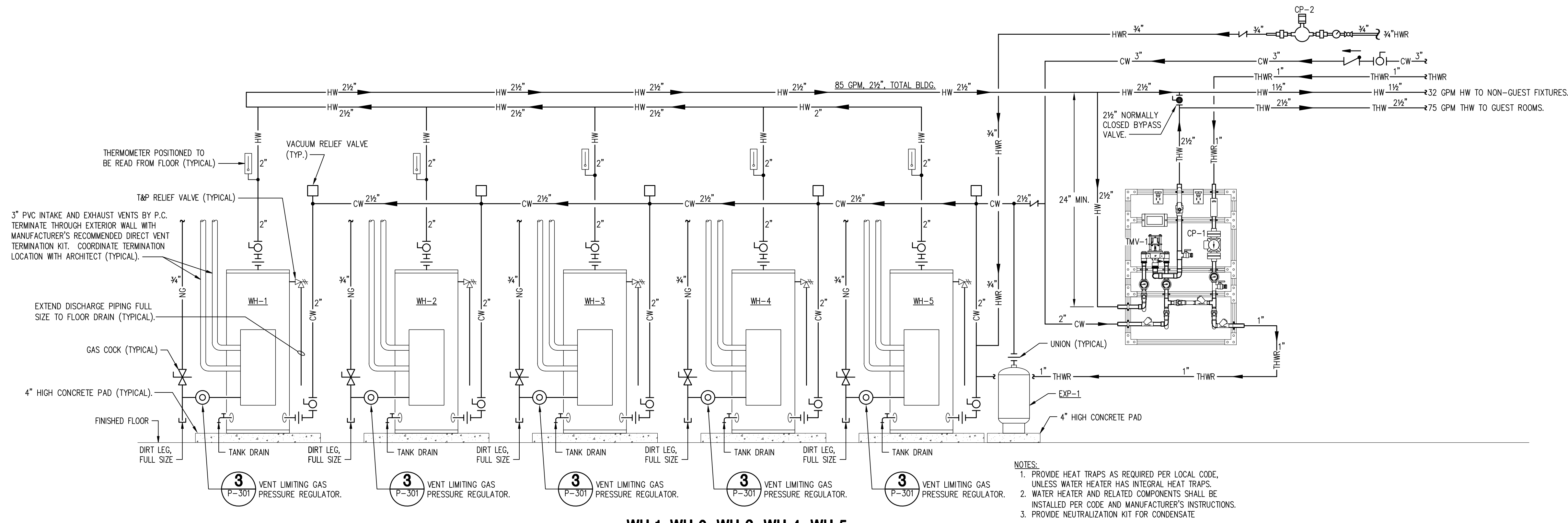
Type: Sump Pump(s)
Model NO.: SE-50

Rating: 74 MAX. GPM 37 MAX. TDH
Motor: .5 HP 3600 RPM
Elec: 1 PH 60 HZ 115v
Elec: 8 FL AMPS

DISCHARGE PIPE

304 Stainless Steel
 Sch40 Galvanized Steel
 Sch80 PVC Pipe

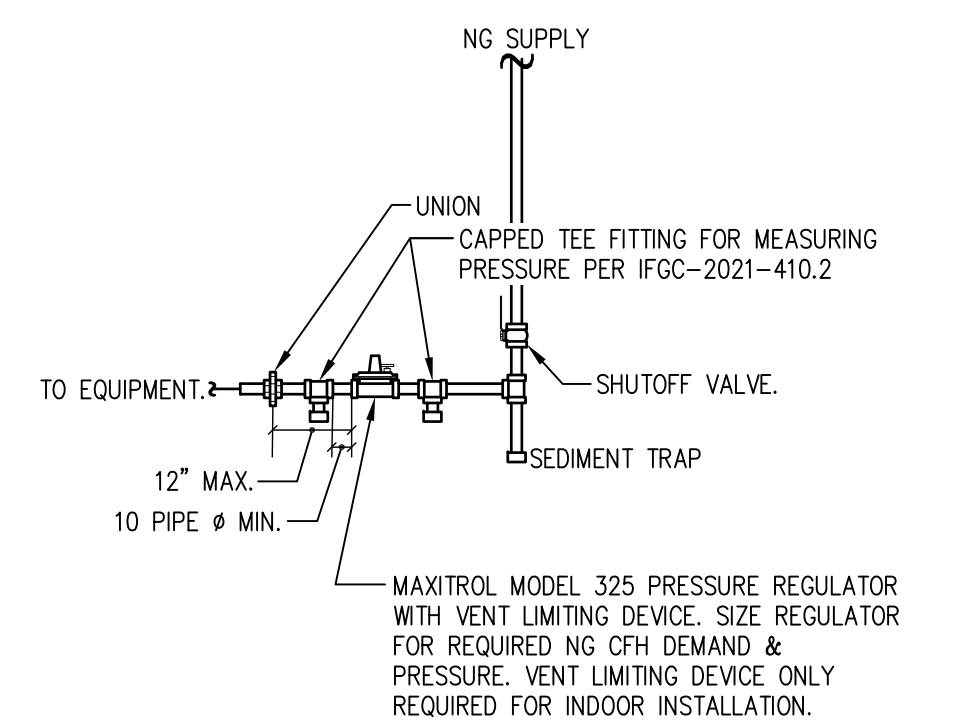
1-1/2"
 2"
 3"



WH-1, WH-2, WH-3, WH-4, WH-5 GAS WATER HEATER SCHEMATIC
P-301 SCALE: NONE

NOTE:
PIPE WATER HEATERS IN PARALLEL AS SHOWN USING A REVERSE RETURN (1ST IN LAST OUT) CONFIGURATION.

- NOTES:**
- PROVIDE HEAT TRAPS AS REQUIRED PER LOCAL CODE, UNLESS WATER HEATER HAS INTEGRAL HEAT TRAPS.
 - WATER HEATER AND RELATED COMPONENTS SHALL BE INSTALLED PER CODE AND MANUFACTURER'S INSTRUCTIONS.
 - PROVIDE NEUTRALIZATION KIT FOR CONDENSATE



3 TYP. GAS PRESSURE REGULATOR DETAIL
P-301 SCALE: NONE

PLUMBING LEGEND

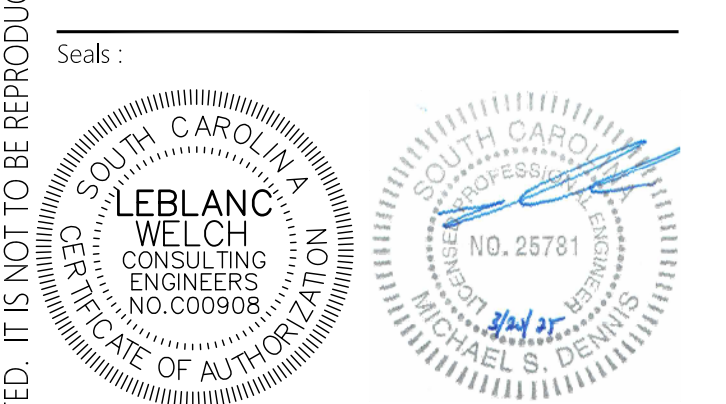
— CW —	COLD WATER
— CW —	COLD WATER BURIED
— HW —	140°F HOT WATER
— 165HW —	165°F HOT WATER
— THWR —	125°F TEMPERED HOT WATER
— HWR —	HOT WATER RETURN
— THWR —	TEMPERED HOT WATER RETURN
— SS —	SANITARY SEWER
— SSB —	SANITARY SEWER BURIED OR BELOW FLOOR
— C —	GREASE INTERCEPTOR WASTE
— SW —	SANITARY SEWER VENT
— NG —	NATURAL GAS
— PRDC —	PRIMARY ROOF DRAIN CONDUCTOR
— SRDC —	SECONDARY ROOF DRAIN CONDUCTOR
— C —	CONDENSATE DRAINAGE
— PD —	PUMPED DRAIN



COR3 Design, LLC
Commercial, Office, Retail, Restaurant, Real Estate Development
125 Rhett Street
Suite 101
Greenville, SC 29601
Phone: 864.451.5288
Fax: 864.990.3085
www.cor3design.com

- Consultants:
- STRUCTURAL**
Taylor and Viola Structural Engineers
PO Box 2616
Raleigh, NC 27603
828.328.6331
- PLUMBING**
LWI Consulting Engineers
870 Cleveland St, STE 1D
Greenville, SC 29601
864.271.6535
- MECHANICAL**
LWI Consulting Engineers
870 Cleveland St, STE 1D
Greenville, SC 29601
864.271.6535
- ELECTRICAL**
Matrix Engineering, INC
912 S Pine Street
Spartanburg, SC 29302
864.583.6274

Project Title:
HOME 2 SUITES GREENWOOD SC
475 HOSPITALITY BLVD,
GREENWOOD, SC 29649



Revisions:
10.16.2024 Issue For Permit
A 03.20.2025 100% Issue For Hilton

Project Number:
23112
Phase:
CD
Date:
04.22.2024
Drawn By:
NSC
Checked By:
LWI
Sheet Number:
P-301
Sheet Title:
ENLARGED PLUMBING PLANS
& DETAILS

PLUMBING FIXTURE SPECIFICATIONS - GUEST ROOMS

Table with columns for fixture ID, manufacturer, and specifications. Includes sections for WC-1 Water Closet, WC-2 Water Closet, L-1 Lavatory, L-4 Lavatory, S-1 Sink, S-2 Sink, S-3 Sink, S-1 Bath Tub ADA, S-1 Shower, and S-2 Shower.

PLUMBING FIXTURE SPECIFICATIONS - NON GUEST ROOMS

Table with columns for fixture ID, manufacturer, and specifications. Includes sections for WC-3 Water Closet, L-2 Lavatory, L-T-1 Laundry Tub, S-3 Sink, S-1 Mop Basin, and S-2 Shower.

PLUMBING EQUIPMENT SCHEDULE

Table listing plumbing equipment items such as Air Admittance Valves, Floor Drains, Sinks, Pumps, and Cleanouts with their respective specifications and manufacturer details.

PLUMBING SPECIFICATIONS:

Detailed plumbing specifications covering piping materials, pipe insulation, sanitary sewer waste and vent, gas piping, roof drain conductors, pipe protection, and disinfection & sterilization procedures.



COR3 Design, LLC
125 Rhett Street
Suite 101
Greenville, SC 29601

Phone: 864.451.5288
Fax: 864.990.3085

www.cor3design.com

Structural
Taylor and Viola Structural Engineers
P.O. Box 2616
Fleming, NC 28603
828.328.6331

Plumbing
LWI Consulting Engineers
970 Cleveland St., STE 110
Greenville, SC 29601
864.271.6535

Mechanical
LWI Consulting Engineers
970 Cleveland St., STE 110
Greenville, SC 29601
864.271.6535

Electrical
Matrix Engineering, INC
912 S. Pine Street
Spartanburg, SC 29302
864.583.6274

HOME 2 SUITES
GREENWOOD SC
475 HOSPITALITY BLVD,
GREENWOOD, SC 29649

Client Logo



Revisions:
10.16.2024 Issue For Permit
A 03.20.2025 100% Issue For Hilton

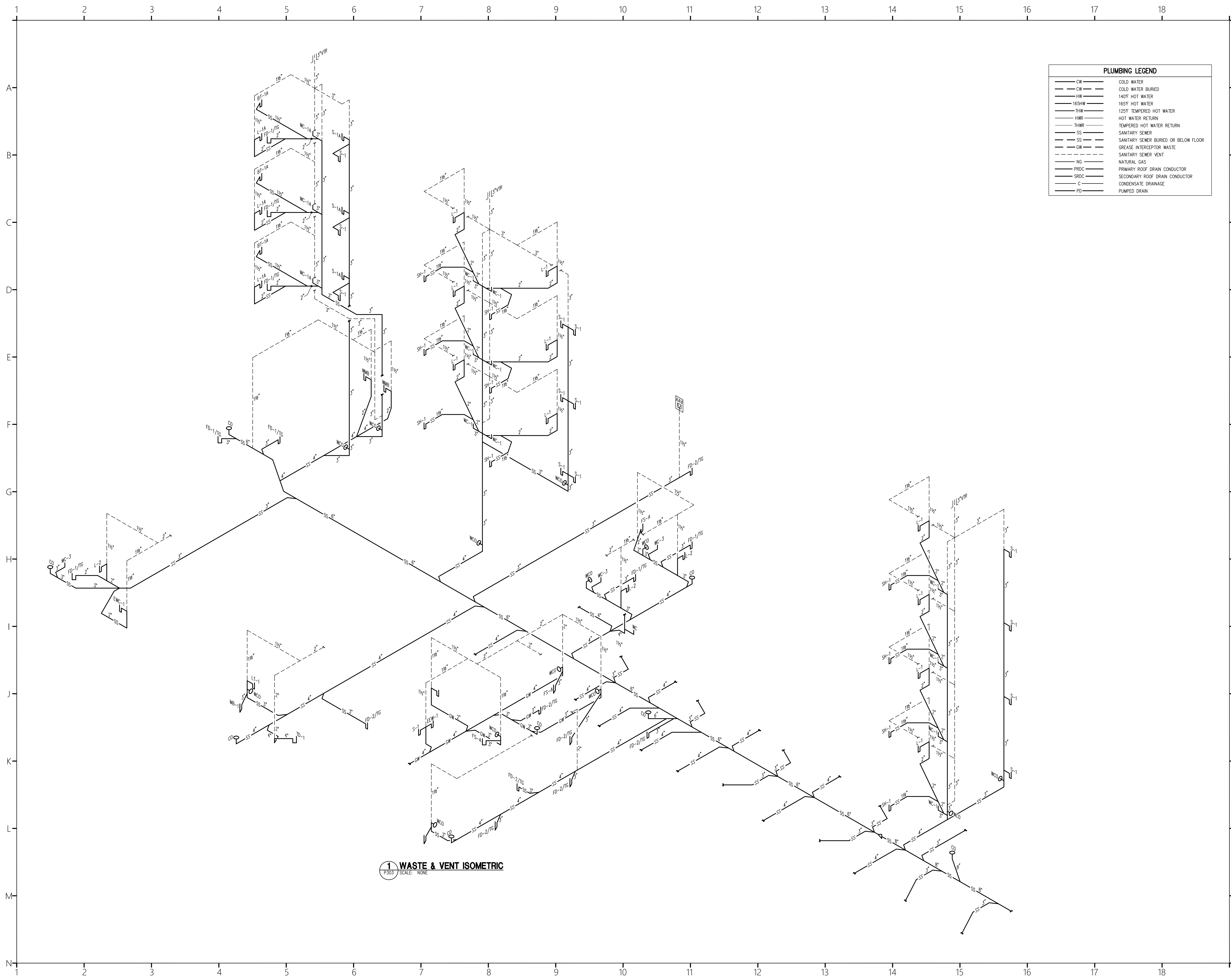
Project Number: 23112
Phase: CD
Date: 04.22.2024

Drawn By: NSC
Checked By: LWI

Sheet Number: P-302

Sheet Title: PLUMBING SPECIFICATIONS

THIS DRAWING IS THE PROPERTY OF COR3 DESIGN, LLC AND IS COPY RIGHT PROTECTED. IT IS TO BE RETURNED UPON REQUEST. IT IS NOT TO BE REPRODUCED OR COPIED IN WHOLE OR IN PART. IT IS ONLY TO BE USED FOR THE PROJECT AND SITE SPECIFICALLY IDENTIFIED HEREIN AND IS NOT TO BE USED FOR ANY OTHER PROJECT.



PLUMBING LEGEND	
— CW —	COLD WATER
— CW —	COLD WATER BURIED
— HW —	140°F HOT WATER
— 165HW —	165°F HOT WATER
— THW —	125°F TEMPERED HOT WATER
— HWR —	HOT WATER RETURN
— THWR —	TEMPERED HOT WATER RETURN
— SS —	SANITARY SEWER
— SS —	SANITARY SEWER BURIED OR BELOW FLOOR
— GW —	GREASE INTERCEPTOR WASTE
— SV —	SANITARY SEWER VENT
— NG —	NATURAL GAS
— PRDC —	PRIMARY ROOF DRAIN CONDUCTOR
— SRDC —	SECONDARY ROOF DRAIN CONDUCTOR
— C —	CONDENSATE DRAINAGE
— PD —	PUMPED DRAIN

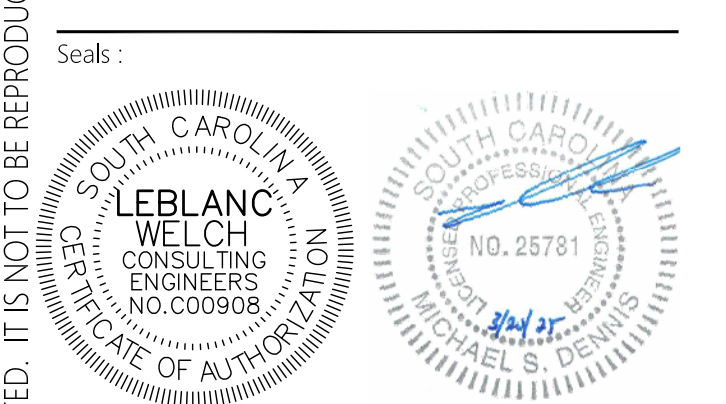
1 WASTE & VENT ISOMETRIC
 P.303 SCALE: NONE



COR3 Design, LLC
 Commercial, Office, Retail, Restaurant, Real Estate Development
 125 Rhett Street
 Suite 101
 Greenville, SC 29601
 Phone: 864.451.5288
 Fax: 864.990.3085
 www.cor3design.com

Consultants:
STRUCTURAL
 Taylor and Viola Structural Engineers
 PO Box 2616
 Hickory, NC 28603
 828.328.6331
PLUMBING
 LWI Consulting Engineers
 870 Cleveland St, STE 10
 Greenville, SC 29601
 864.271.6535
MECHANICAL
 LWI Consulting Engineers
 870 Cleveland St, STE 10
 Greenville, SC 29601
 864.271.6535
ELECTRICAL
 Matrix Engineering, INC
 912 S Pine Street
 Spartanburg, SC 29302
 864.583.6274

Project Title:
HOME 2 SUITES GREENWOOD SC
 475 HOSPITALITY BLVD,
 GREENWOOD, SC 29649



Revisions:
 10.16.2024 Issue For Permit
 A 03.20.2025 100% Issue For Hilton

Project Number:
 23112
 Phase:
 CD
 Date:
 04.22.2024
 Drawn By:
 NSC
 Checked By:
 LWI

Sheet Number:
P-303
 Sheet Title:
 PLUMBING WASTE & VENT ISOMETRIC

THIS DRAWING IS THE PROPERTY OF COR3 DESIGN, LLC AND IS COPY RIGHT PROTECTED. IT IS NOT TO BE REPRODUCED OR COPIED IN WHOLE OR IN PART. IT IS ONLY TO BE USED FOR THE PROJECT AND SITE SPECIFICALLY IDENTIFIED HEREIN AND IS NOT TO BE USED FOR ANY OTHER PROJECT. IT IS TO BE RETURNED UPON REQUEST.