



7/21/23

CROWN ENGINEERING, PLLC
Mint Hill, North Carolina
sandy@crowne-engineering.net
704-237-0771
P-0805

**RESTAURANT
AT CARAMBA !**

650 WEST ROOSEVELT BLVD.
MONROE, NC 28110

EQUIPMENT CONNECTIONS

BAR EQUIPMENT

| UNIT | QUANTITY | DESCRIPTION | LOAD | VOLTS/Ø | DISCONNECTING MEANS | WIRE/CONDUIT | CIRCUIT |
|------|----------|--------------------|-------|---------|---------------------|-----------------------|--------------|
| 5 | 2 | BACK BAR COOLER | 4.5A | 120/1 | 5-20R RECEPTACLE | 2#12, 1#12 GND., ¾"C. | EQ-1; EQ-3 |
| 6 | 1 | BEER BOTTLE COOLER | 7.0A | 120/1 | 5-20R RECEPTACLE | 2#12, 1#12 GND., ¾"C. | EQ-5 |
| 7 | | DELETED | | | | | |
| 9 | 1 | CUSTOM BEER TAP | 25.0A | 208/1 | MOT. RATED TOGGLE | 2#10, 1#10 GND., ¾"C. | EQ-9,11 |
| 11 | 2 | WATER DISPENSER | 3.0A | 120/1 | 5-20R RECEPTACLE | 2#12, 1#12 GND., ¾"C. | EQ-13; EQ-15 |
| 12 | 1 | ORANGE JUICER | 2.7A | 208/1 | MOT. RATED TOGGLE | 2#12, 1#12 GND., ¾"C. | EQ-59,61 |

KITCHEN EQUIPMENT

| | | | | | | | |
|----|---|------------------------------|-------|-------|------------------|-----------------------|-----------------------|
| 14 | 2 | HOOD LIGHTS | 3.0A | 120/1 | INTEGRAL SWITCH | 2#12, 1#12 GND., ¾"C. | EQ-19; EQ-23 |
| 15 | 2 | HOOD EXHAUST FAN | 2 HP | 208/3 | 3P/30A/208V/3R | 3#12, 1#12 GND., ¾"C. | EQ-2,4,6; EQ-36,38,40 |
| 16 | 1 | HOOD MAKEUP AIR FAN | 3 HP | 208/3 | 3P/30A/208V/3R | 2#12, 1#12 GND., 1"C. | EQ-8,10,12 |
| 19 | 1 | DOUBLE STACK CONVECTION OVEN | 9.8A | 120/1 | 5-20R RECEPTACLE | 2#12, 1#12 GND., ¾"C. | EQ-27 |
| 23 | 1 | REFRIGERATED CHEF'S BASE | 6.0A | 120/1 | 5-20R RECEPTACLE | 2#12, 1#12 GND., ¾"C. | EQ-31 |
| 28 | 1 | FREEZER 2-DOOR | 11.0A | 120/1 | 5-20R RECEPTACLE | 2#12, 1#12 GND., ¾"C. | EQ-35 |
| 31 | 1 | PANINI GRILL | 2.3A | 120/1 | 5-50R RECEPTACLE | 2#8, 1#10 GND., 1"C. | EQ-35 |
| 35 | 1 | DISHWASHER | 20.0A | 120/1 | 5-30R RECEPTACLE | 2#10, 1#10 GND., ¾"C. | EQ-39 |

EXTERIOR EQUIPMENT

| | | | | | | | |
|-----|---|-----------------------------|-------|-------|--------------------|-----------------------|----------|
| 44A | 1 | FREEZER CONDENSING UNIT | 10.0A | 208/1 | 2P/30A/208V/3R | 2#12, 1#12 GND., ¾"C. | EQ-16,18 |
| 44B | 1 | BEER COOLER CONDENSING UNIT | 10.0A | 208/1 | 2P/30A/208V/3R | 2#12, 1#12 GND., ¾"C. | EQ-20,22 |
| 44C | 1 | COOLER CONDENSING UNIT | 20.0A | 208/1 | 2P/30A/208V/3R | 2#10, 1#10 GND., ¾"C. | EQ-24,26 |
| 44D | 1 | FREEZER EVAPORATOR UNIT | 9.0A | 120/1 | MOTOR RATED SWITCH | 2#12, 1#12 GND., ¾"C. | EQ-28 |
| 44E | 1 | BEER COOLER EVAPORATOR UNIT | 6.0A | 120/1 | MOTOR RATED SWITCH | 2#12, 1#12 GND., ¾"C. | EQ-30 |
| 44F | 1 | COOLER EVAPORATOR UNIT | 2.3A | 120/1 | MOTOR RATED SWITCH | 2#12, 1#12 GND., ¾"C. | EQ-32 |
| 44G | 1 | COOLER/FREEZER LIGHTING | 7.0A | 120/1 | INTEGRAL SWITCH | 2#12, 1#12 GND., ¾"C. | EQ-34 |

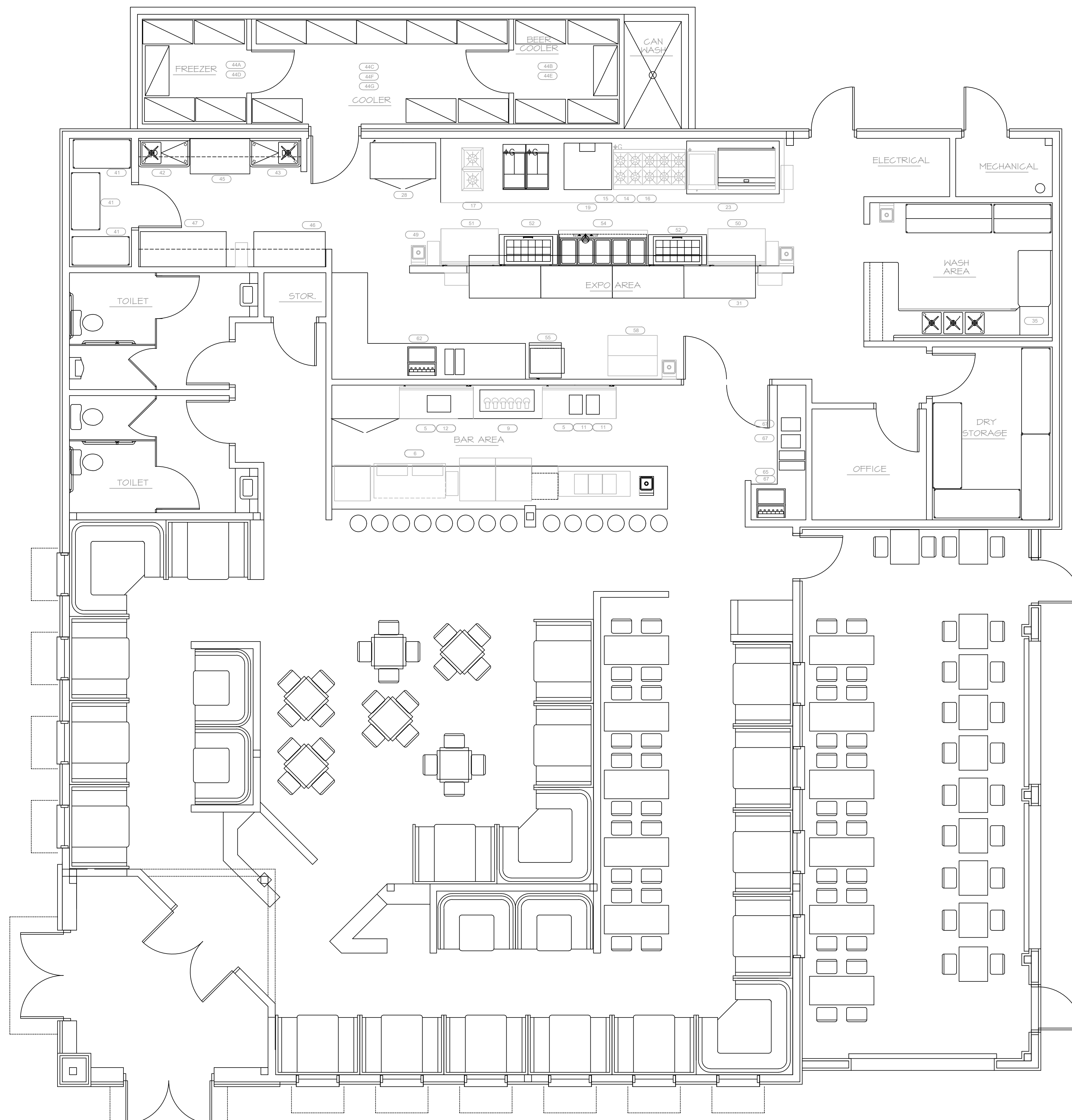
PRODUCTION EQUIPMENT

| | | | | | | | |
|----|---|--------------------------|-------|-------|------------------|-----------------------|--------------|
| 50 | 2 | WORKTOP COOLER | 2.2A | 120/1 | 5-20R RECEPTACLE | 2#12, 1#12 GND., ¾"C. | EQ-43; EQ-71 |
| 51 | 1 | WORKTOP FREEZER | 7.0A | 120/1 | 5-20R RECEPTACLE | 2#12, 1#12 GND., ¾"C. | EQ-45 |
| 52 | 2 | SANDWICH TABLE | 2.2A | 120/1 | 5-20R RECEPTACLE | 2#12, 1#12 GND., ¾"C. | EQ-47; EQ-49 |
| 55 | 1 | CHIP WARMER | 13.6A | 120/1 | 5-20R RECEPTACLE | 2#12, 1#12 GND., ¾"C. | EQ-51 |
| 57 | 1 | WORKTOP COOLER | 2.0A | 120/1 | 5-20R RECEPTACLE | 2#12, 1#12 GND., ¾"C. | EQ-53 |
| 58 | 1 | ICE MACHINE | 14.0A | 208/1 | 6-20R RECEPTACLE | 2#12, 1#12 GND., ¾"C. | EQ-55,57 |
| 59 | | DELETED | | | | | EQ-59,61 |
| 62 | 1 | FOUNTAIN DRINK DISPENSER | 15A | 120/1 | 5-20R RECEPTACLE | 2#12, 1#12 GND., ¾"C. | EQ-63 |

WAIT STATION EQUIPMENT

| | | | | | | | |
|----|---|--------------------------|-------|-------|------------------|-----------------------|--------------|
| 65 | 1 | FOUNTAIN DRINK DISPENSER | 15.0A | 120/1 | 5-20R RECEPTACLE | 2#12, 1#12 GND., ¾"C. | EQ-65 |
| 67 | 2 | FLAVORED WATER DISPENSER | 3.0A | 120/1 | 5-20R RECEPTACLE | 2#12, 1#12 GND., ¾"C. | EQ-67; EQ-69 |

NOTES:
1. UNLESS OTHERWISE NOTED, ALL EXISTING DEVICES, CONDUIT, WIRING, ETC. TO REMAIN. EXISTING PANEL TO REMAIN. SEE PANEL SCHEDULE FOR UPDATES.



1 FLOOR PLAN - MISCELLANEOUS CONNECTIONS
SCALE: 1/4" = 1'-0"

| MARK | DATE | OWNER CHANGES DESCRIPTION |
|------|---------|---------------------------|
| 1 | 7/21/23 | OWNER CHANGES |

ISSUE: 8/25/22

PROJECT NO: -
CAD DWG FILE: -
DRAWN BY: EHB
CHECKED BY: EHB

SHEET TITLE

**FLOOR PLAN
MISC. CONNECTIONS**

E4.0

