

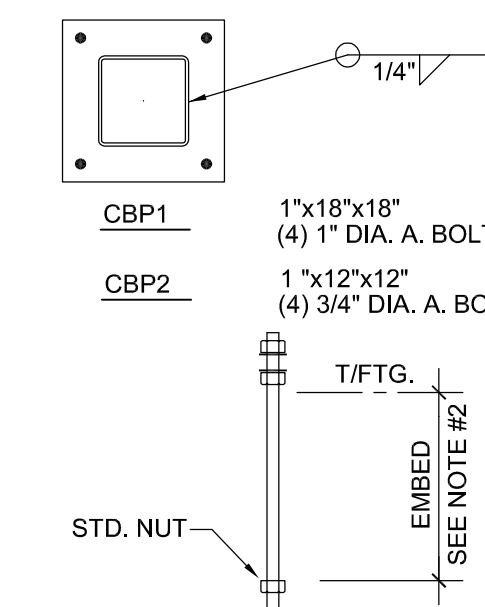


SPREAD FOOTING SCHEDULE			
MARK	PLAN SIZE	THICKNESS	REINFORCEMENT
F4	4'-0" x 4'-0"	1'-3"	8-#5 EW- BOTTOM
F5	5'-0" x 5'-0"	1'-3"	6-#6 EW- BOTTOM
F6	6'-0" x 6'-0"	1'-3"	8-#6 EW- BOTTOM

COLUMN SCHEDULE				
Roof				
	HSS6x6x1/4	HSS6x6x1/4	HSS6x6x3/8	
Fin. Fl.				
BASEPLATE	CBP1	CBP2	CBP1	
COLUMN MARK	C1	C2	C3	

BASE PLATE NOTES:

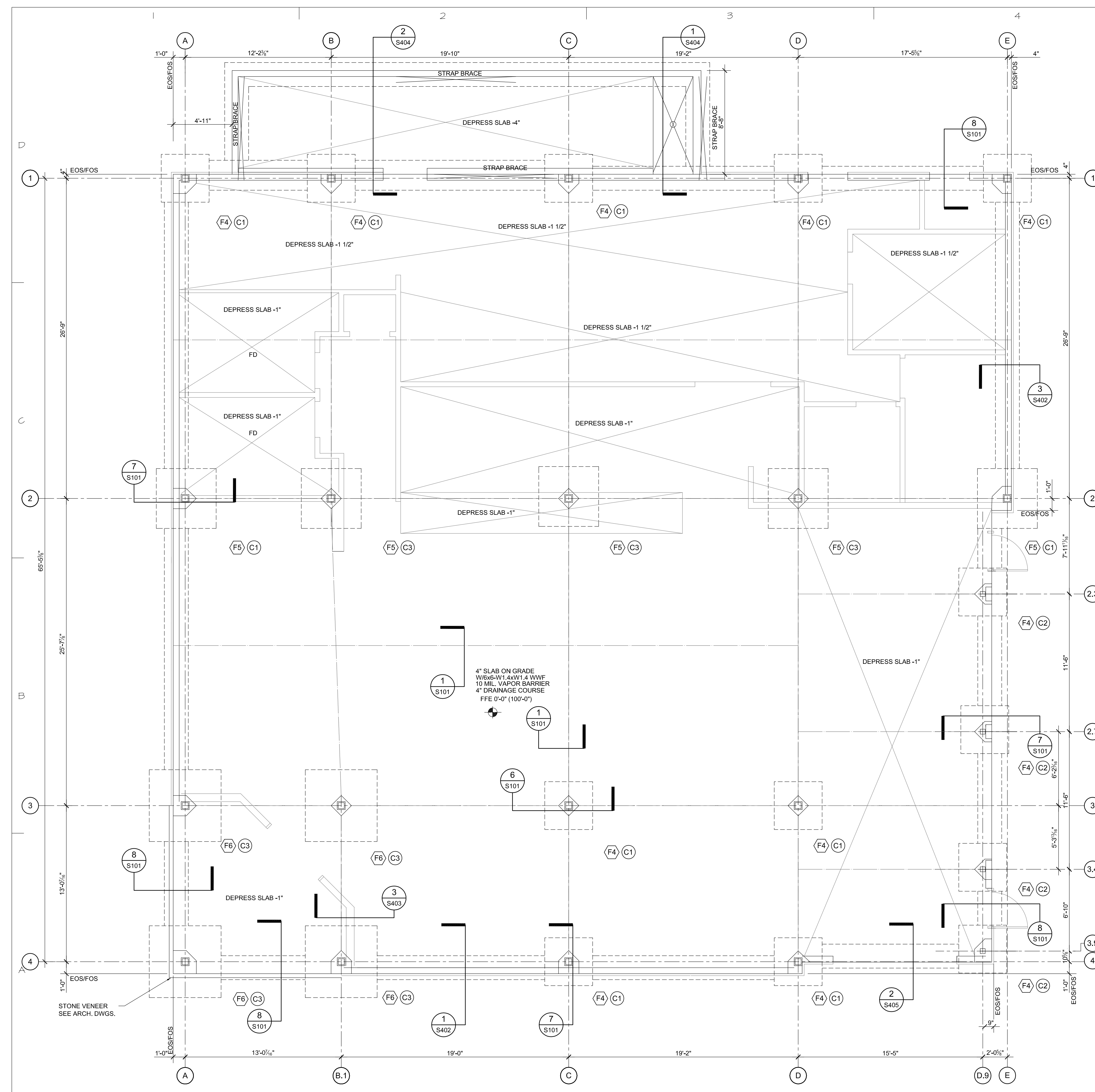
- USE 1 1/2" EDGE DISTANCE FOR 3/4" Ø ANCHOR BOLTS
USE 2" EDGE DISTANCE FOR 1" Ø ANCHOR BOLTS
- EMBED 3/4" ANCHOR BOLTS 9" MIN. INTO FOOTINGS
FOR 1" ANCHOR BOLTS USE 12" INTO FOOTING
- ALL ANCHOR BOLTS SHALL BE ASTM F1554 G36 OR G55
W/ WELDABILITY SUPPLEMENT S1
- PROVIDE A MINIMUM 3" OF CONCRETE COVER BELOW THE
BOTTOM OF THE ANCHOR BOLTS. EXCAVATE IF REQUIRED TO
PROVIDE COVERAGE AT THE A.B. PATTERN.
- PROVIDE 2" OF CONCRETE COVER FOR COLUMN FOOTINGS
THAT HAVE TOP REINFORCEMENT MAT.



REVISED CFM STUDS FROM 8" TO 6"

1 FOUNDATION & SLAB PLAN
1/4" = 1'-0"

- FOUNDATION PLAN NOTES:**
- TOP OF FOOTING, T.O.F. (x-x') IS NOTED ON PLAN REFERENCED FROM FIN. FL. (0'-0').
 - STEP FOOTINGS AS NEEDED AT ALL DOWNSPOUTS AND UTILITIES.
 - TOP OF EXTERIOR FOOTING (-1'-4") TYPICAL UNLESS NOTED OTHERWISE.
 - CONTRACT DRAWINGS SHALL NOT BE USED FOR SHOP DRAWINGS.
 - SEE SHEET S100 FOR GENERAL NOTES.
 - COORD. W/ARCH. & MECH. DWGS FOR ALL FLOOR DRAINS & SLOPES, & SLAB DEPRESSIONS.
 - SEE DETAIL 4/S101 FOR DEPRESSED SLAB DETAIL.
 - EOS ——— INDICATES EDGE OF SLAB.
FOS ——— INDICATES FACE OF METAL STUD.
FD ——— INDICATES FLOOR DRAIN SEE MECHANICAL DRAWINGS.



MARK	DATE	DESCRIPTION
2	3/21/23	AS NOTED
1	12/01/22	OWNER/VE CHANGES

ISSUE: 8/30/2022
PROJECT NO: 22021
CAD DWG FILE:
DRAWN BY:
CHECKED BY: LDA

SHEET TITLE
FOUNDATION & SLAB PLAN

STRUCTURAL
S201